

# Wellsite Services, LLC

John Goldsmith  
(316) 640-0236

427 Roosevelt St.  
Cheney, KS 67025

## Scale 1:240 (5"=100') Imperial Measured Depth Log

Well Name: #1 Scheuerman 17D  
API: 15-171-21248  
Location: 1,904' FSL & 2,162' FEL, Sec 17-16S-31W, W/2 NW SE  
License Number: REI #4767  
Spud Date: 4/24/2019  
Surface Coordinates: LAT: 38.662319251  
LONG: -100.769141012  
Bottom Hole Vertical Hole  
Coordinates: 3/4 Degree Deviation  
Ground Elevation (ft): 2943'  
Logged Interval (ft): 3750' To: RTD  
Formation: Mississippian at RTD  
Type of Drilling Fluid: Chemical

Region: Scott County  
Drilling Completed: 5/5/2019

K.B. Elevation (ft): 2951'  
Total Depth (ft): 4700'

Printed by MUD.LOG from WellSight Systems 1-800-447-1534 www.WellSight.com

### OPERATOR

Company: Ritchie Exploration Inc.  
Address: 8100 E. 22nd St. N. #700  
Wichita, KS 67226  
(316) 691-9500

### GEOLOGIST

Name: John Goldsmith  
Company: Wellsite Services LLC  
Address: 427 Roosevelt St.  
Cheney, KS 67025  
(316) 640-0236

### RIG RECORDS

Contractor: WW Drilling Rig #12  
Pusher: Calvin Phannensteil

Collar Tally: 496'

Pump: Emsco DB 550  
Liner & Stroke: 6 x 15

### BIT RECORDS

Size:	Type:	Footage:	Condition:	Hours:	Serial #:
12 1/4"	STC Tooth	0-252'	RR	2.5	RJ7490
7 7/8"	STC F-27	252'-4700'	New	124.75	RL0802

### COMMENTS

Surface Casing: 6 joints of 8 5/8" set @ 251'  
Production Casing: No production casing was set.  
Mud by: MudCo  
DST's by: Trilobite Testing  
Logs by: ELI Wireline Services (DIL, CN-CD, ML, CS)  
RTD=4700' LTD=4700'

## FORMATION TOPS

FORMATION	SAMPLE TOPS		E-LOG TOPS	
	Depth	Datum	Depth	Datum
Base of Anhydrite	2369'	+582	2365'	+586
Stotler	3555'	-604	3552'	-601
Heebner Shale	3936'	-985	3932'	-981
Toronto	3956'	-1005	3951'	-1000
Lansing	3974'	-1023	3970'	-1019
Muncie Creek Shale	4145'	-1194	4142'	-1191
Stark Shale	4244'	-1293	4241'	-1290
Hushpuckney Shale	4285'	-1334	4281'	-1330
Base of KC	4324'	-1373	4320'	-1369
Marmaton	4361'	-1410	4357'	-1406
Altamont	4376'	-1425	4374'	-1423
Pawnee	4452'	-1501	4449'	-1498
Myrick Station	4488'	-1537	4485'	-1534
Fort Scott	4504'	-1553	4502'	-1551
CherokeeShale	4528'	-1577	4525'	-1574
Johnson Zone	4568'	-1617	4567'	-1616
Morrow	4597'	-1646	4596'	-1645
Mississippian	4624'	-1673	4627'	-1676
RTD	4700'	-1749		
LTD			4700'	-1749

## DST's


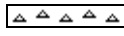

**DST #1 "LKC C" 3997'-4018' 4-29-19 30-30-30-30**  
 1st Blw: 1/4" blw blt to 1/2" (No BB)  
 2nd Blw: No blw, flushed, No blw (No BB)  
 IFP: 13-15# ISIP: 27# FFP: 14-16# FSIP: 35#  
 Hyd: 1965-1916#  
 Rec: 1' Mud w/OS.

**DST #2 "LKC D" 4019'-4040' 4-30-19 30-45-45-60**  
 1st Blw: 1/4" blw blt to 2" (No BB)  
 2nd Blw: Wk surf blw blt to 1/2" (No BB)  
 IFP: 14-20# ISIP: 186# FFP: 23-27# FSIP: 119#  
 Hyd: 1938-1914#  
 Rec: 2'Oil, 5'OCM.




**DST #3 "LKC H&I" 4140'-4208' 5-1-19 30-45-45-60**  
 1st Blw: Blt to BOB in 19min (No BB)  
 2nd Blw: Blt to BOB in 25min (No BB)  
 IFP: 22-137# ISIP: 995# FFP: 140-219# FSIP: 943#  
 Hyd: 2079-1967#  
 Rec: 206'WCM, 248'MCW.

**DST #4 "Johnson" 4543'-4607' 5-3-19 30-30-30-30**  
 1st Blw: 1/4" blw blt to 3/4" (No BB)  
 2nd Blw: No blw, flushed, no blw (No BB)  
 IFP: 17-17# ISIP: 267# FFP: 18-22# FSIP: 288#  
 Hyd: 2260-2200#  
 Rec: 5'Mud.

**ROCK TYPES**

 Anhy  
 Cht  
 Congl



 Dol  
 Lmst  
 Shale

 Sltst  
 Ss  
 Carb sh





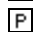

 Sandylms  
 Shaly ls

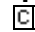
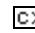
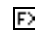
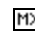
**ACCESSORIES**

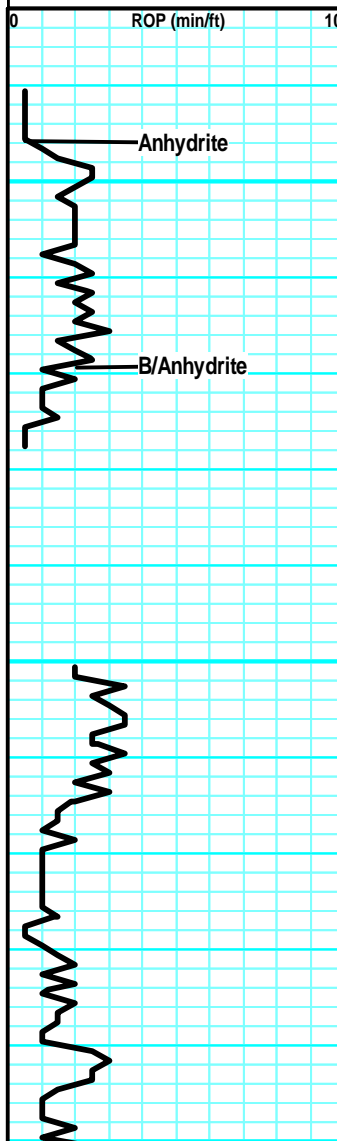

**EVENTS**  
 Circ  
 Conn

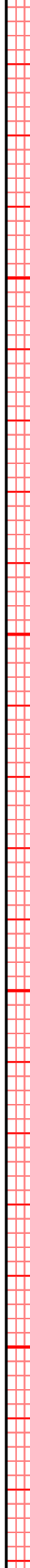
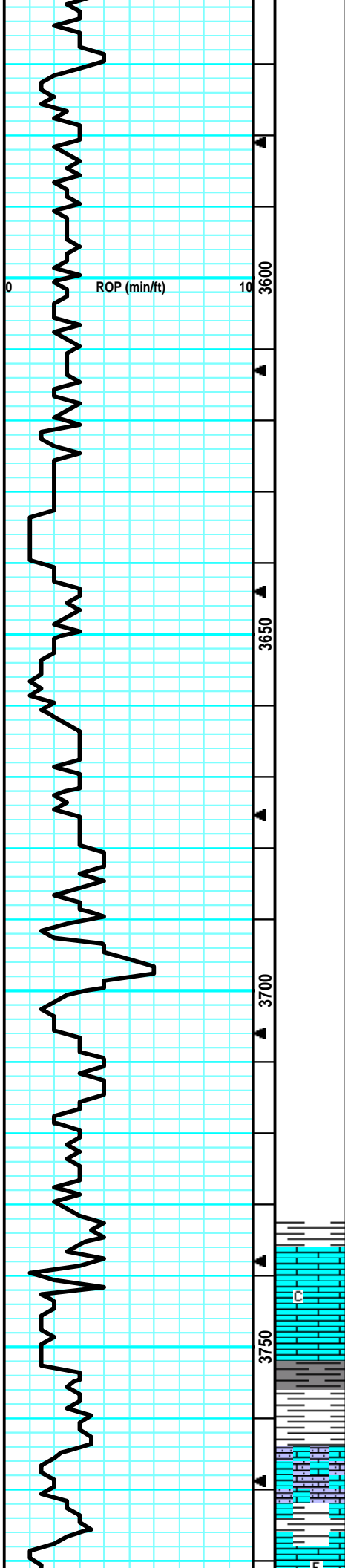
**FOSSIL**  
 Brach  
 Bryozoa  
 Crin

 Foram  
 Fossil  
 Gastro  
 Oolite  
 Ostra  
 Fuss  
 Oolcast

**MINERAL**  
 Calc  
 Chtdk  
 Chtlt  
 Glau  
 Pyr  
 Sil

**TEXTURE**  
 Chalky  
 Crslxn  
 Finexln  
 Microxln

Drilling Time ROP (min/ft)	Depth	Lithology	CFS Point	Oil Shows	Geological Descriptions	Remarks
0	10					
	2350				<p><b>Morning Depth/Activity Report</b></p> <p>April 24, 2019: Move in and Spud at 2:30pm                      4/25/19: Fixing clutch on mud pump @ 446'                      4/26/19: Drlg @ 1,930'                      4/27/19: Drlg @ 2,860'                      4/28/19: Drlg @ 3,394'                      4/29/19: Drlg @ 3,905' (DST #1 LKC "C")                      4/30/19: Drlg @ 4,020' (DST #2 LKC "D")                      5/1/19: Drlg @ 4,177' (DST #3 LKC "H&amp;I")                      5/2/19: Drlg @ 4,271'                      5/3/19: Drlg @ 4,498' (DST #4 Johnson)                      5/4/19: Drlg @ 4,607' (RTD 4700', Ran E-Log)                      5/5/19: Plug and Abandon</p>	<p>Survey @ 252' = 1/2 Degree</p> <p><b>Anhydrite @ 2346' (+605)</b></p>
	3500				<p><b>Drill Time Begins @ 3500' on 4/28/19</b></p>	<p>MudCo Check #2                      2069' on 4/26/19                      Wt Vis pH                      9.1 30 7.0                      Filt Chlr LCM                      n/c 4.2K Tr</p> <p>MudCo Check #3                      2836' on 4/27/19                      Wt Vis pH                      9.1 30 7.0                      Filt Chlr LCM                      n/c 18K 3#</p>
	3550					<p>MudCo Check #4                      3461' on 4/28/19                      Wt Vis pH                      8.8 61 11.5                      Filt Chlr LCM                      7.6 1.0K 3#</p> <p><b>Stotler @ 3555' (-604)</b></p>



**10' Samples Begin @ 3750' on 4/28/19**

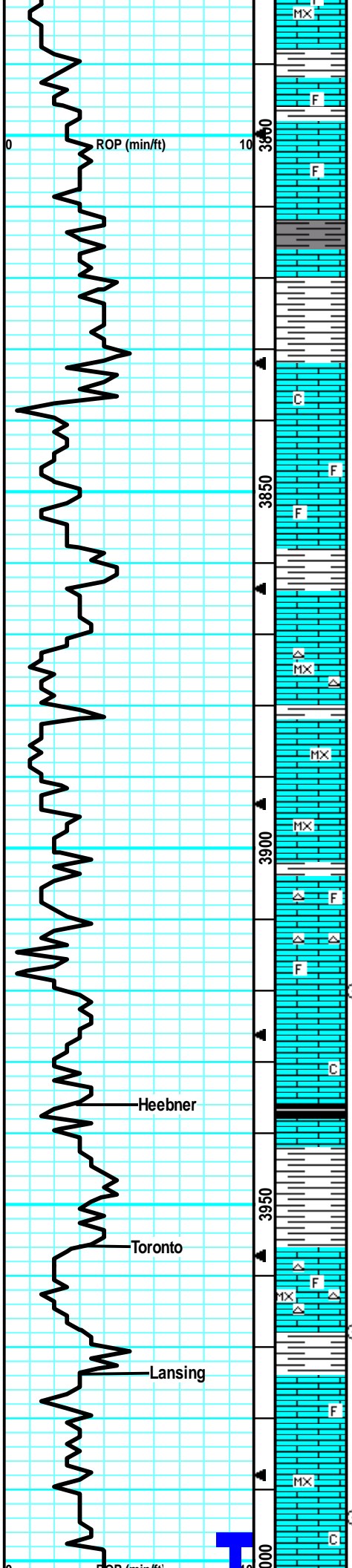
LS: gry/tan, fn xl, brit, tr-nvp, fw pcs drk brn spttd stns, no fluor, no cut, pos drk dead oil, ns, no odr, fw SH: drk gry/gry.

LS: gry/tan, fn xln, sing, dense, brit, tr-nvp, no odr, ns.

SH: blk/drk gry/grn/brn, silty, soft, fw waxy, fw carb, no odr, ns.

LS: gry/tan, fn xln, fw gritty/sandy, brit, tr-nvp, o odr, ns.

LS: tan/lt tan, slght mott, micro-fn xln, fw foss, brit, chlky, tr-nvp, svrl pcs pur chlk, no odr, ns.

Chky, tr-nvp, svrl pcs pur chlk, no odr, ns.

LS: lt gry, slight mott, fn xln, dense, brit, tr-nvp, no odr, ns. Fw red beds from above.

LS: tan/crm, sing, fn xln, fw foss, frags, mostly dense, tr-nvp, no odr, ns.

LS: lt tan/lt gry, fn xln, fw foss frags, brit, sub-chlky, tr-nvp, no odr, ns.

SH: drk gry, silty, no odr, ns.

SH: gry/brn/grn, silty, soft, no odr, ns.

LS: tan/lt gry, fn xln, many foss, sub-chlky in prt, tr-nvp, no odr, ns.

LS: lt tan/lt gry, slight mott, fn xln, foss, sub-chlky, fw pcs w/ drk brn patchy stns, no fluour/cut, nsfo, infix SH; gry/brn, silty, no odr.

SH: gry/brn, silty, fw gritty, no odr, ns.

LS: tan/lt gry, fn xln, fw sandy/gritty, mostly brit, fw sub-chlky, tr-nvp, fw SlStn: gry, v fn grn, arg, brit, friabl, tr-nvp, no odr, ns.

LS: tan/gry/crm, fn micro-fn xln, many dense, tr-nvp, fw pcs w/ patchy brn stns, no fluor/cut, fw Chert: wht, sharp, tr-nvp, no odr, nsfo.

LS: crm/lt tan/lt gry, micro-fn xln, brit, chlky, tr-nvp, svrl pcs pur chlk, no odr, ns.

LS: lt tan/crm, micro-fn xln, v brit, chlky, tr-nvp, svrl pcs pur chlk, no odr, ns.

LS: tan/lt tan, fn xln, fw foss, brit, sub-chlky, tr-nvp, sm Chert: wht/opaq, foss, sharp, no odr, ns.

LS: gry/crm, fn xln, fw foss, tr-pr intxln por in fw, abund pur chlk, tr-nvp, no odr, ns.

LS: gry, fn xln, tr-nvp, slt/peppr like stns, no cut, no sfo, no odr.

SH: blk/drk gry, silty, fissile, fw carb, no odr, ns.

SH: drk gry, silty, fw LS: tan/lt gry, fn xln, dense, sm firm, tr-nvp, no odr, ns.

Svrl SH: gry/blu, silty, soft.

LS: tan/lt tan, micro-fn xln, brit, tr spptd stn, no odr, nsfo, svrl Chert: wht/opaq, foss, sharp.

SH: drk gry/brn, silty, fissile, no odr, ns.

LS: lt tan, sing, fn xln, fw foss frags, scat pr ppt intxln por, sub-chlky, no cup odr, ns.

LS: lt tan, sing, micro-fn xln, dense, sub-chlky, tr-nvp, fw pcs pur chlk, no cup odr, ns.

LS: tan/lt gry, fn xln, dense, firm, sm brit, tr-nvp, no odr, ns.

CFS @ 3920'  
(20"/45")

MudCo Check #5			
3930' on 4/29/19			
Wt	Vis	pH	
9.1	54	11.0	
Filt	Chlr	LCM	
7.4	1.9K	2.5#	

**Heebner @ 3936' (-985)**

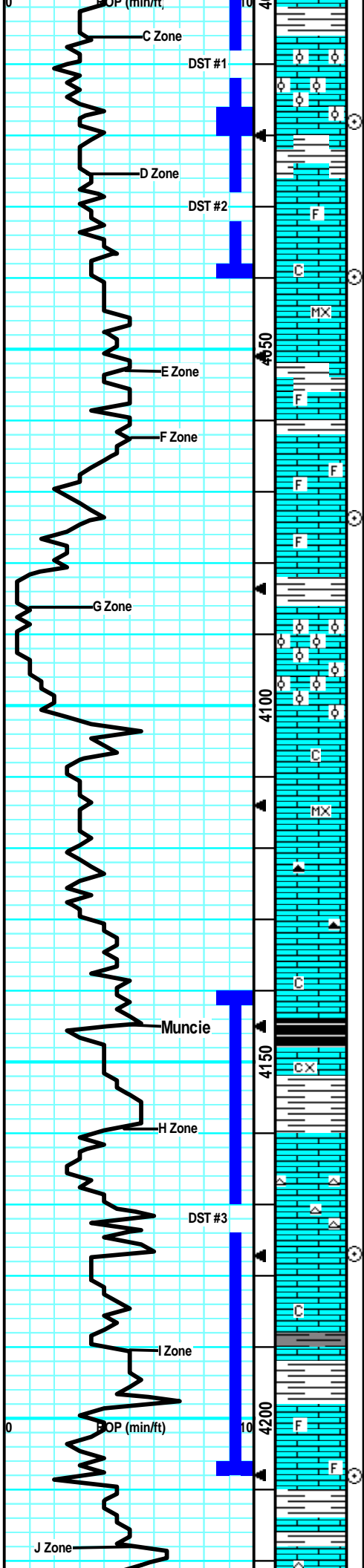
**Toronto @ 3956' (-1005)**

CFS @ 3968'  
(20"/45")

**Lansing @ 3974' (-1023)**

DST #1 "LKC C"  
3997'-4018' 4-29-19  
30-30-30-30  
1st Blw: 1/4" blw blt to 1/2"  
(No BB)  
2nd Blw: No blw, flushed, No  
blw (No BB)  
IFP: 13-15# ISIP: 27# FFP:

CFS @ 3994'  
(20"/45")



SH: drk gry/gry, silty.  
 LS: tan/lt gry, fn xln, sm v ool, fr intool por in fw pcs, slt/pep like stns in por, fr-gd sho med brn oil on brk in 10+ pcs, gd fluo/strm cut, gd cup odr incrs to strg undr lght.

SH: drk gry/drkn brn, silty, sm soft.  
 LS: lt gry/lt tan, fn xln, sm foss. fr intxn/slight scat vuggy intfoss por, fr stn in por, gd sfo on brk w/ gas bubs in 4-5 pcs, gd fluor/strm cut, fr/gd cup odr.

LS: crm/lt tan, sing, micro-fn xln, dense, chlky, tr-nvp, svrl pcs pur chl, fw SH: gry/grn/brn, silty, no odr, ns.

LS: lt gry/lt tan, fn xln, fw foss, sm flakey/mealy, sub-chlky in prt, tr-nvp, no odr, ns.  
 Much of the same as above, fw pur chl, no odr, ns.

LS: tan/lt tan, fn xln, sm v foss in prt, fw sub-chlky, sm britl, tr-nvp, no cup odr, ns.

LS: tan/lt gry, fn xln, fw foss, many firm, sub-chlky in prt, tr-nvp, no odr, ns.

SH: drk gry/grn, silty, soft, fw fissile.  
 LS: tan/lt brn, mott, fn xln, profus ool, sm v gd vuggy intool por, chlky in prt, no cup odr, ns.

Much of the same, more gry in color, lrg inflx pur chl, no odr, ns,  
 LS: lt tan/lt gry, micro-fn xln, dense, brit, sub-chlky, tr-nvp, no cup odr, ns.

Much of the same, inflx Chert: lt tan, sing, sharp, no odr, ns.  
 LS: gry/lt tan, slight mott, fn xln, dense, sm firm, fw lrg calc incls, tr-nvp, no cup odr, ns.

SH: blk, silty, cab, soft-med crush, no odr, ns.  
 LS: gry/lt brn, mott, fn-crs xln, dense, hard, fw SH: gry/brn, silty, no odr, ns.

LS: tan, fn xln, brit, chlky, pr intxn por in sm, 2 pcs w/ v sml spstd oil stns, wk fluor/strm cut, svrl sml sphr oil on brk, wk cup odr.  
 LS: lt tan/lt gry, fn xln, dense, birt, sub-chlky, tr-nvp, inflx Chert: wht/opaq/tan, sharp, no cup odr, ns.

LS: lt gry/lt brn, fn xln, dense, firm, sum hard, sub-chlky, tr-nvp, fw SH: drk gry, silty, no odr, ns.  
 SH: gry/grn/drkn gry, silty, soft, fw waxy, no odr, ns.

LS: tan/gry, fn xln, fw foss frags, sm firm, tr-pr intxn por in v fw pcs, 2 pcs w/ pos patchy stns, no fluor/cut, nsfo, no cup odr.  
 LS: tan/gry, slight mtt, fn xln, sm foss, mostly dense, sub-chlky, tr-nvp, fw SH: gry/grn, silty, soft, o odr, ns.

14-16# FSIP: 35#  
 Hyd: 1965-1916#  
 Rec: 1' Mud w/OS.

CFS @ 4018' (30"/60") Survey @ 4018' = 1/4 Degree

MudCo Check #6  
 4040' on 4/30/19  
 Wt Vis pH  
 9.2 51 11.0  
 Filt Chlr LCM  
 6.4 2.8K 2#

CFS @ 4040' (30"/60")

DST #2 "LKC D"  
 4019'-4040' 4-30-19  
 30-45-45-60  
 1st Blw: 1/4" blw blt to 2" (No BB)  
 2nd Blw: Wk surf blw blt to 1/2" (No BB)  
 IFP: 14-20# ISIP: 186#  
 FFP: 23-27# FSIP: 119#  
 Hyd: 1938-1914#  
 Rec: 2'Oil, 5'OCM.

CFS @ 4074' (30"/60")

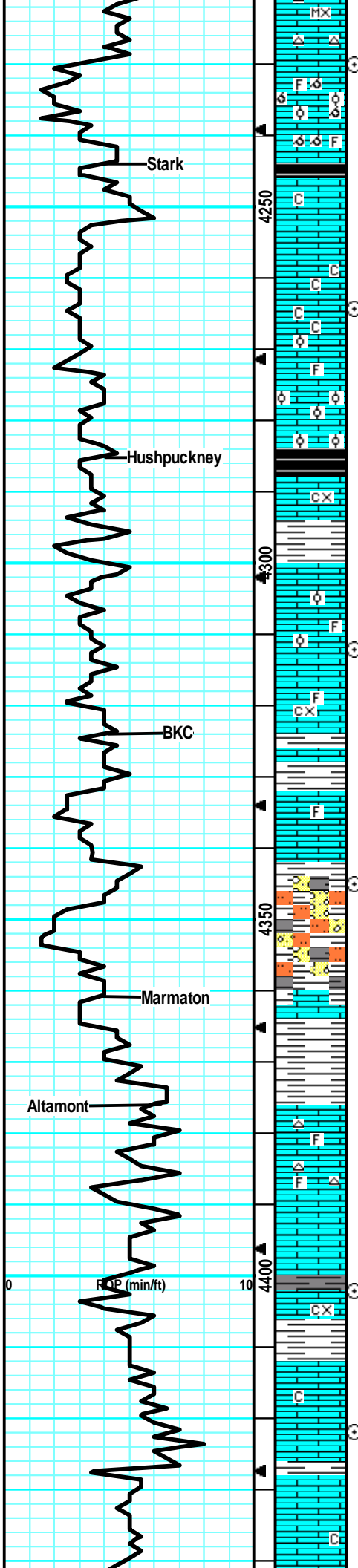
**Muncie @ 4145' (-1194)**

DST #3 "LKC H&I"  
 4140'-4208' 5-1-19  
 30-45-45-60  
 1st Blw: Blt to BOB in 19min (No BB)  
 2nd Blw: Blt to BOB in 25min (No BB)  
 IFP: 22-137# ISIP: 995# FFP: 140-219# FSIP: 943#  
 Hyd: 2079-1967#  
 Rec: 206'WCM, 248'MCW.

CFS @ 4176' (30"/60")

MudCo Check #7  
 4198' on 5/1/19  
 Wt Vis pH  
 9.2 48 11.0  
 Filt Chlr LCM  
 7.4 2.5K 2#

CFS @ 4208' (30"/60")



LS: crm/lt tan, sing, micro-fn xln, dense, sub-chlky, tr-nvp, fw Chert: lt gry/wht, foss, sharp, no odr, ns.

CFS @ 4230'  
(30"/60")

LS: gry/tan, mott, fn xln, fw foss, mostly v ool, sm brit, chalky, sm gd vuggy oolcast por, svrl pcs pur chlk, no cup odr, ns.

**Stark @ 4244' (-1293)**

SH: blk, carb, silty, soft, friable.  
LS: tan/lt gry, mott in prt, fn xln, sm foss, mostly dense, fw flaky/mealy, tr-nvp, strng cup odr, could not find sfo in 3 trys, ? fluor, no stns.

CFS @ 4264'  
(30"/60")

LS: tan/lt tan, slight mott, fn xln, mostly britl, v chlky, tr-pr intxln por, abund pur chlk, no cup odr, ns.

Much of the same, 60% chlk, no odr, ns.

LS: gry/tan, mott, fn xln, sm foss, many profus ool, firm, tr-pt intool por in v fw pcs, no cup odr, ns.

**Hushpuckney @ 4285' (-1334)**

SH: blk, silty, carb, no cup odr, ns.

LS: tan/gry, slight mott, fn-crs xln, fw flaky/mealy, sm firm, tr-nvp, 2-3 pcs w/ pos lght brn stns, no fluor/cut, nsfo, no cup odr, SH: gry.

MudCo Check #8  
4312' on 5/2/19  
Wt Vis pH  
9.3 52 11.5  
Filt Chr LCM  
7.0 2.3K 3#

CFS @ 4312'  
(30"/60")

LS: tan/gry, fn xln, fw foss/ool, sub-chlky, sm firm, tr-nvp, no cup odr, ns.

LS: gry/tan, fn xln, foss in prt, sub-chlky, sm firm, tr-nvp, no odr, ns.

**BKC @ 4324' (-1373)**

LS: gry/lt brn, mott, fn-crs xln, dense, hard, fw foss frags, tr-nvp, svrl SH: gry/drk gry, soft, no odr, ns.

LS: tan/lt gry, fn xln, fw foss, sub-chlky, fw flaky/mealy, tr-nvp, no cup odr, ns.

CFS @ 4345'  
(30"/60")

LS: tan/lt tan, fn xln, fw foss frags, mostly firm, tr-nvp, fw SH: drk gry/brn, no cup odr, ns.

SH: drk gry/drk brn/grn, silty, soft, fw waxy, fw SltStn: gry/grn, gritty, med crush, no odr, ns.

**Marmaton @ 4361' (-1410)**

LS: tan/lt gry, slight mott, fn-crx xln, dense, firm, flakey/mealy, tr-nvp, no odr, ns.

SH: gry/drk gry/brn, soft, gritty, no odr, ns.

**Altamont @ 4376' (-1425)**

LS: gry/tan, fn xln, fw foss, sub-chlky, flakey/mealy, tr-nvp, fw Chert: wht/org, ool/foss, sharp, no odr, ns.

LS: gry/tan, slight mott, fn xln, sm flaky/mealy, tr-nvp, abund SH: gry/grn/brn, soft, svrl pcs chlky, no odr, ns.

CFS @ 4402'  
(30"/60")

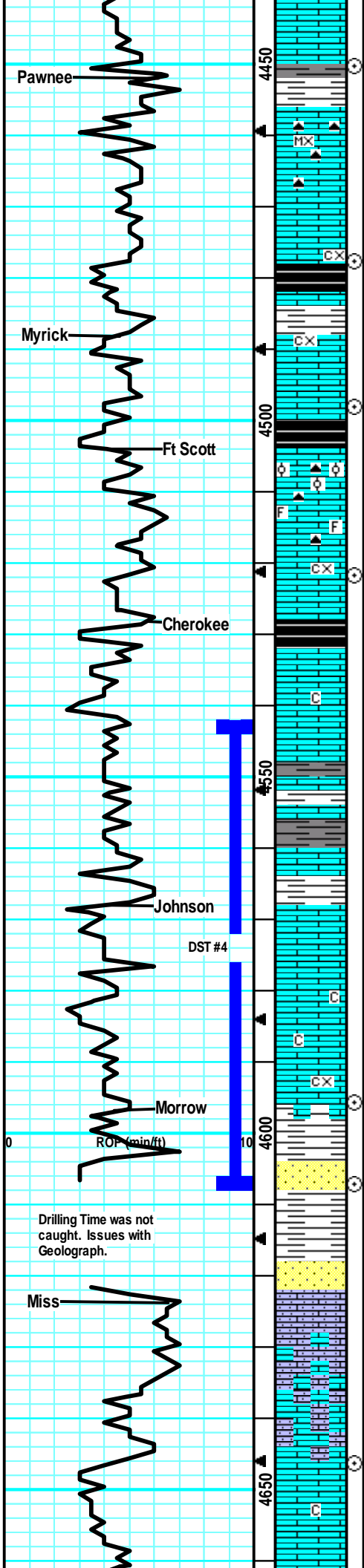
LS: tan/lt gry, slight mott, fn-crs xln, firm, flaky/mealy, tr-nvp, fw SH: drk gry/gry, no odr, ns.

LS: tan/lt tan, fn xln, mostly dense, sub-chlky in prt, firm, tr-nvp, no odr, ns.

CFS @ 4422'  
(30"/60")

SH: gry/blu/brn, fissile, sm waxy, fw LS: tan/lt tan, fn xln, sub-chlky, tr-nvp, no odr, ns.

LS: tan/lt gry, fn xln, flakey/mealy, sub-chlky, fw brit, tr-nvp, no cup odr, ns.



LS: lt tan/lt gry, fn xln, mostly dense, sub-chlky, tr-nvp, no cup odr, ns.

SH: drk gry/gry, silty, soft, no cup odr, ns.  
 LS: lt tan, sing, micro-fn xln, dense, brit. Tr-pr intxpor in fw, 8-9 pcs w/ patchy drk brn tarry like stns, wk fluor/slw cut resid, on 2-3 v sml sphr of oil on brk ? cup odr, svrl pcs Chert, gry, sharp.

LS: 2-3 pcs w/ sho rx, most tan, fn-crs xln, dense, firm, tr-nvp, fw Chert: gry/tan, sharp, no odr.

LS: tan/lt brn, fn-crs xln, dense, hard, fw flakey, tr-nvp, no cup odr, ns.

SH: blk/drk gry, silty, soft, friabl, mostly carb, no cup odr, ns.  
 LS: lt brn/gry, mott, fn-crs xln, dense, hard, flakey, tr-nvp, 2-3 pcs w/ pos drk brn stns, no fluor/cut, nsfo, no cup odr.

LS: lt gry/lt tan, fn xln, dense, sm brit, sub-chlky, in prt, tr-nvp, no odr, ns.

LS: gry/lt brn, mott, fn xln, sm v ool, brity, tr-nvp in ool mtrx, sm flakey/mealy, sub-chlky in prt, abund SH: blk, carb, friabl, fw Chert: gry, foss, sharp, no odr, ns.

LS: gry/lt brn, mott, fn-crs xln, fw foss, hard, sm flakey/mealy, tr-nvp, fw Chert: gry, foss, sharp, no odr, ns.

60" Smpl: mostly the same LS: gry, fn-crs xln, flakey, firm, tr-nvp, no odr, ns.

LS: lt brn/gry, fn xln, dense, hard, fw flakey, tr-nvp, no odr, ns.

SH: blk, carb, soft, friable, no odr, ns.  
 LS: gry/lt tan, fn xln, sub-chlky, fw flakey, tr-nvp, no cup odr, ns.

SH: blk, drk gry, sm fissile, sm LS: gry/lt brn, fn xln, dense, firm, fw sandy/gritty, tr-nvp, no odr, ns.

SH: drk gry/brn/grn, soft, fw waxy, intrbd LS: tan/gry, fn xln, dense, sub-chlky, fw flakey, tr-nvp, no cup odr, ns.

Much of the Same, abund of SH: drk gry/brn.

LS: lt gry/tan, fn xln, tr-pr ppt intxln por in fw, sub-chlky, 4 pcs w/ spstd brn stns, dul yel fluor/strm cut. ssfo on brk, pos fnt cup odr.

LS: mostly drk tan/gry, fn xln, dense, firm, tr-nvp, 2 pcs like desc abv, no cup odr, vssfo.

LS: tan/lt gry, fn xln, fw foss, sm sub-chlky, flakey/mealy & brit, othrs dense, hard, no cup odr, ns.

LS: tan/lt brn, fn-crs xln, dense, hard, tr-nvp, fw SS: crm/wht, fn grn, sub-rnd, arg, friable yet firm, tr-pr ppt intgr por, fw pcs w/ drk min spts, no fluor/cut, nsfo, no cup odr.

SH: drk gry/brn/gry, silty, sm fissile, soft, no cup odr, ns.  
 SS: gry, fn grn, arg, drity, sub-ang, tr-pr intgr por, pos drk min stns, no fluor/cut, nsfo, no odr.

SS/LS: crm/lt gry, fn grn, arg, limey, chlky, friable, brit, tr-pr intgrn por in v fw, abund of SH: drk gry/brn, silty, no odr, ns.

LS: lt gry/lt tan, fn xn, dense, sm firm, flakey/mealy, tr-nvp, fw LS: crm/lt tan, sandy/gritty, chlky, tr-nvp, no cup odr, ns.

60" Smpl: LS much of the same, dense, firm, tr-nvp, no odr, ns.

LS: lt gry/lt tan, fn xln, fw foss frags, sub-chlky in prt, sm firm, tr-nvp, no odr, ns.

CFS @ 4450' (30"/60")

**Pawnee @ 4452' (-1501)**

CFS @ 4478' (30"/60")

**Myrick @ 4488' (-1537)**

CFS @ 4498' (30"/60")

**Ft Scott @ 4504' (-1553)**

MudCo Check #9		
4508' on 5/3/19		
Wt	Vis	pH
9.3	45	11.0
Filt	Chlr	LCM
7.2	2.9K	3#

CFS @ 4522' (30"/60")

**Cherokee @ 4528' (-1577)**

**Johnson @ 4568' (-1617)**

DST #4 "Johnson"  
 4543'-4607' 5-3-19  
 30-30-30-30  
 1st Blw: 1/4" blw bit to 3/4" (No BB)  
 2nd Blw: No blw, flushed, no blw (No BB)  
 IFP: 17-17# ISIP: 267# FFP: 18-22# FSIP: 288#  
 Hyd: 2260-2200#  
 Rec: 5'Mud.

CFS @ 4596' (30"/60")

**Morrow @ 4597' (-1646)**

CFS @ 4607' (30"/60")

MudCo Check #10		
4607' on 5/4/19		
Wt	Vis	pH
9.3	59	11.0
Filt	Chlr	LCM
8.0	2.5K	2#

**Miss @ 4624' (-1673)**

CFS @ 4646' (30"/60")



