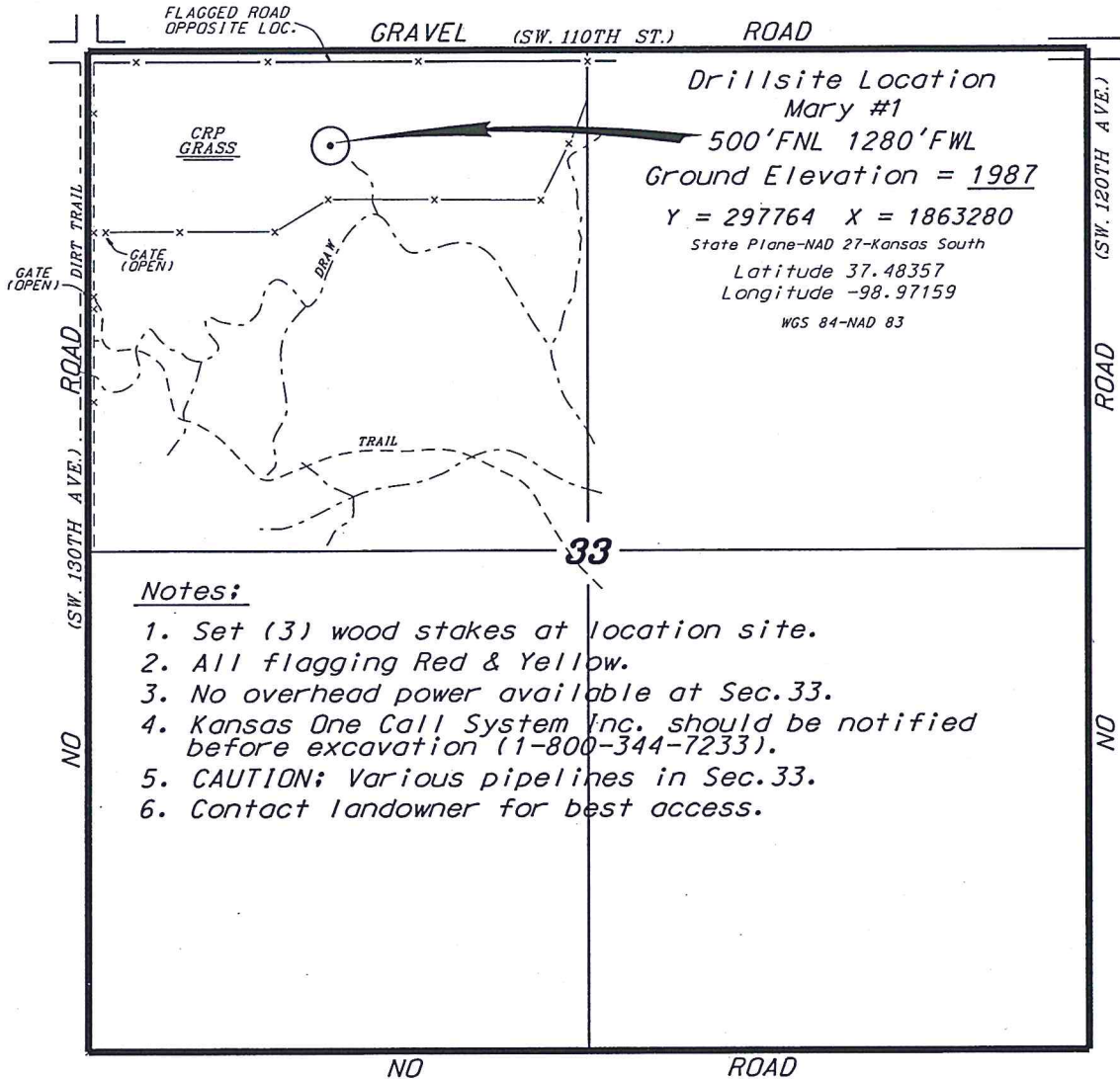
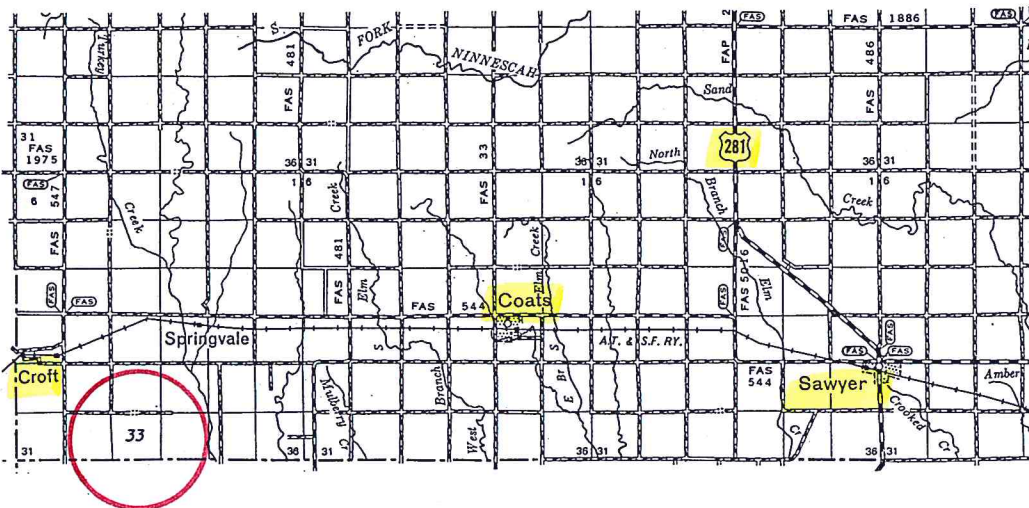


**GRIFFIN MANAGEMENT, LLC
MARY LEASE
NW. 1/4, SECTION 33, T29S, R15W
PRATT COUNTY, KANSAS**

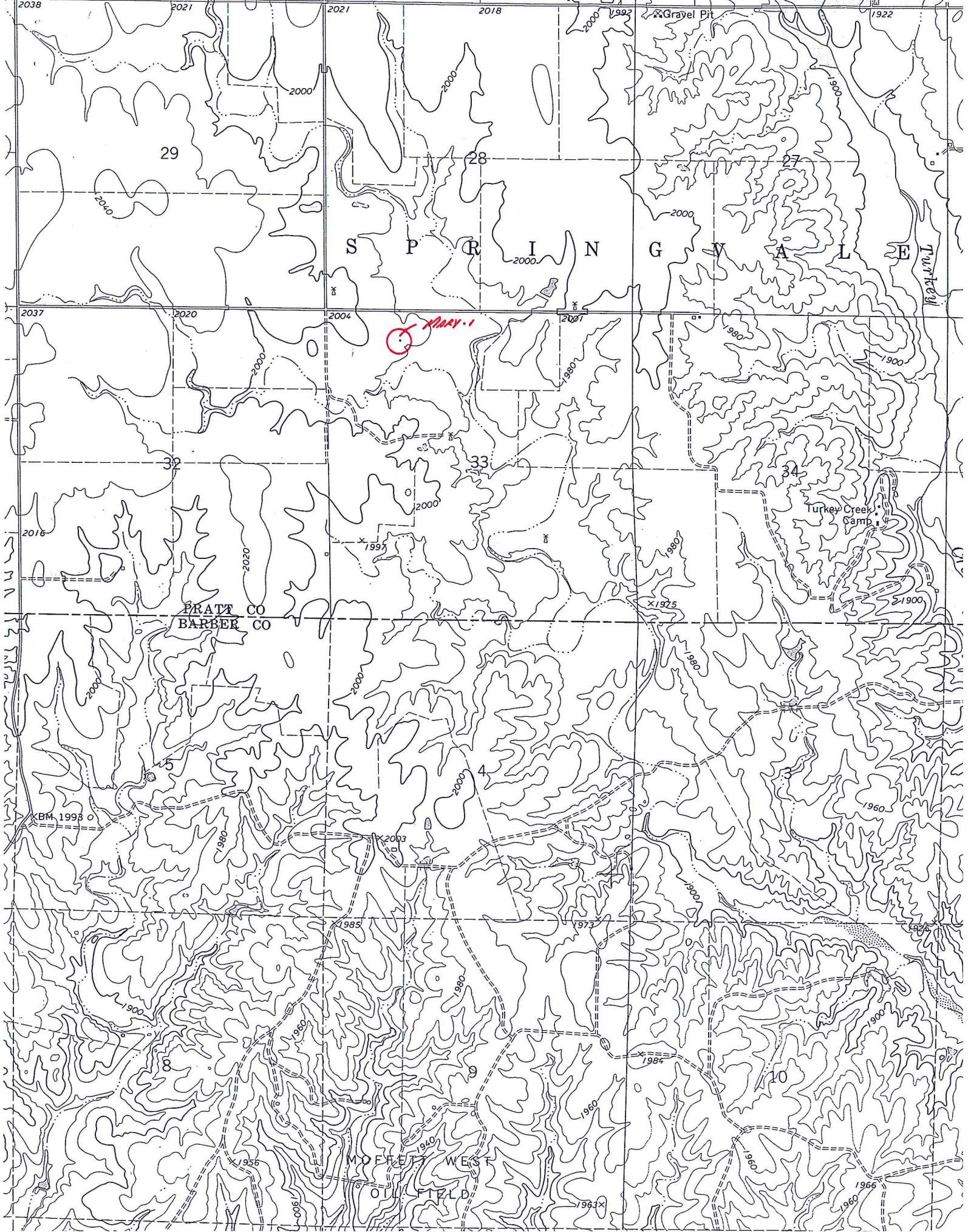


*Ingress and egress to location as shown on this plot is per usage only and may not be legally opened for public use. Contact landowner, tenant and county road department for access.



* Controlling data is based upon the best maps and photographs available to us and upon a regular section of land containing 640 acres.
* Approximate section lines were determined using the normal standard of care of oilfield surveyors practicing in the state of Kansas. The section corners, which establish the precise section lines, were not necessarily located, and the exact location of the drillsite location in the section is not guaranteed. Therefore, the operator securing this service and accepting this plot and all other parties relying thereon agree to hold Central Kansas Oilfield Services, Inc., its officers and employees harmless from all losses, costs and expenses and said entities released from any liability from incidental or consequential damages.
* Elevations derived from National Geodetic Vertical Datum.

Date July 2, 2019



29

28

27

S P R I N G W A T E R

Turkey

MAY 1

33

34

Turkey Creek Camp

PRATT CO
BARBER CO

5

4

8

10

MOFFET WEST

OTTUMFIELD

B.M. 1993

Gravel Pit

1975

1960

1900

1966

1963

1955

1985

1973

1984

2000

2000

2000

980

1940

2020

2000

2000

2000

1992

1922

1900

1900

1980

1980

1900

1984

1960

2038

2021

2021

2018

1992

1922

2037

2020

2004

2007

1980

1900

2016

2020

1993

1980

1975

1980

1900

1984

1960

B.M. 1993

1980

2003

2000

1980

1900

1984

1960

1900

1960

1985

980

1973

1984

1960

1955

1955

1985

980

1973

1963

1966

1960

1900

1960

1900

1900

625'

(C)