

KANSAS CORPORATION COMMISSION
OIL & GAS CONSERVATION DIVISION

TEMPORARY ABANDONMENT WELL APPLICATION

OPERATOR: License#
Name:
Address 1:
Address 2:
City: State: Zip:
Contact Person:
Phone:
Contact Person Email:
Field Contact Person:
Field Contact Person Phone:

API No. 15-
Spot Description:
Sec. Twp. S. R.
GPS Location: Lat, Long
Datum: NAD27, NAD83, WGS84
County: Elevation:
Lease Name: Well #:
Well Type: Oil, Gas, OG, WSW, Other
SWD Permit #: ENHR Permit #:
Gas Storage Permit #:
Spud Date: Date Shut-In:

Table with 7 columns: Conductor, Surface, Production, Intermediate, Liner, Tubing. Rows include Size, Setting Depth, Amount of Cement, Top of Cement, Bottom of Cement.

Casing Fluid Level from Surface: How Determined? Date:
Casing Squeeze(s): to w / sacks of cement, to w / sacks of cement. Date:
Do you have a valid Oil & Gas Lease? Yes No
Depth and Type: Junk in Hole at Tools in Hole at Casing Leaks: Yes No Depth of casing leak(s):
Type Completion: ALT. I ALT. II Depth of: DV Tool: w / sacks of cement Port Collar: w / sack of cement
Packer Type: Size: Inch Set at: Feet
Total Depth: Plug Back Depth: Plug Back Method:

Geological Data:

Table with 4 columns: Formation Name, Formation Top, Formation Base, Completion Information. Rows 1 and 2.

UNDER PENALTY OF PERJURY I HEREBY ATTEST THAT THE INFORMATION CONTAINED HEREIN IS TRUE AND CORRECT TO THE BEST OF MY KNOWLEDGE

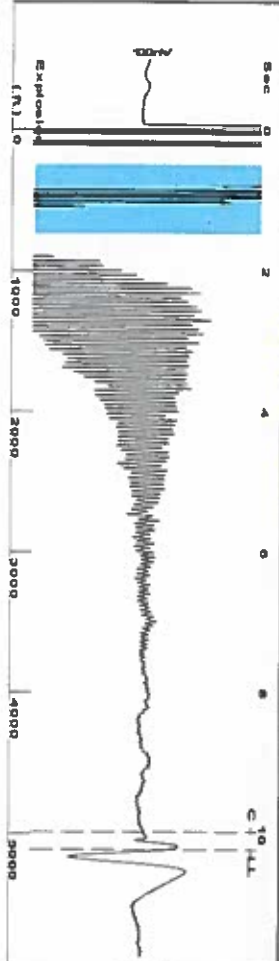
Submitted Electronically

Do NOT Write in This Space - KCC USE ONLY
Date Tested: Results: Date Plugged: Date Repaired: Date Put Back in Service:
Review Completed by: Comments:
TA Approved: Yes Denied Date:

Mail to the Appropriate KCC Conservation Office:

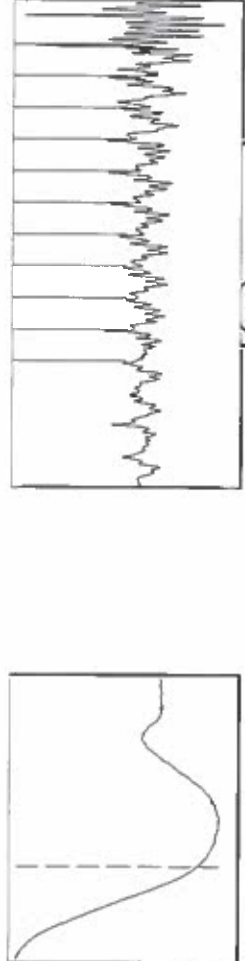
Table with 3 columns: District Office #, Address, Phone. Rows 1-4.

Group: LMLU Well: LMLU 601 (acquired on: 07/29/19 15:58:26)



Filter Type High Pass
Manual Acoustic Velocity 843 N/s
Automatic Collar Count 154083 Yes
Manual JTS/Sec 154083
Time 10.231 sec
Joints 157886 Jts
Depth 5112.34 ft

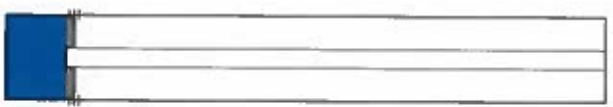
0.5 to 1.5 (Sec)



Analysis Method: Automatic

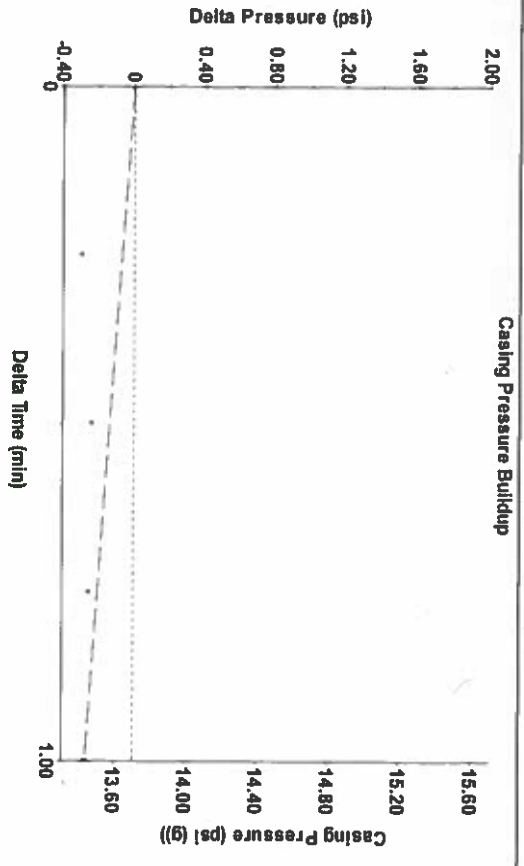
Group: LMLU Well: LMLU 601 (acquired on: 07/29/19 15:58:26)

Production	Potential	Casing Pressure	Producing
Oil - - -	BBL/D	13.7 psi (g)	Annular
Water - - -	BBL/D	Casing Pressure Buildup	Gas Flow
Gas - - -	Mscf/D	-0.270 psi	0 Mscf/D
IPR Method	Vogel	Gas/Liquid Interface Pressure	% Liquid
PBHP/SBHP	- - -	18.9 psi (g)	100 %
Production Efficiency	0.0	Liquid Level Depth	
Oil 40 deg API		5112.34 ft	
Water 1.05 Sp.Gr H2O		Pump Intake Depth	
Gas 0.99 Sp.Gr AIR		5212.00 ft	
Acoustic Velocity	999.383 N/s	Formation Depth	
		5136.00 ft	



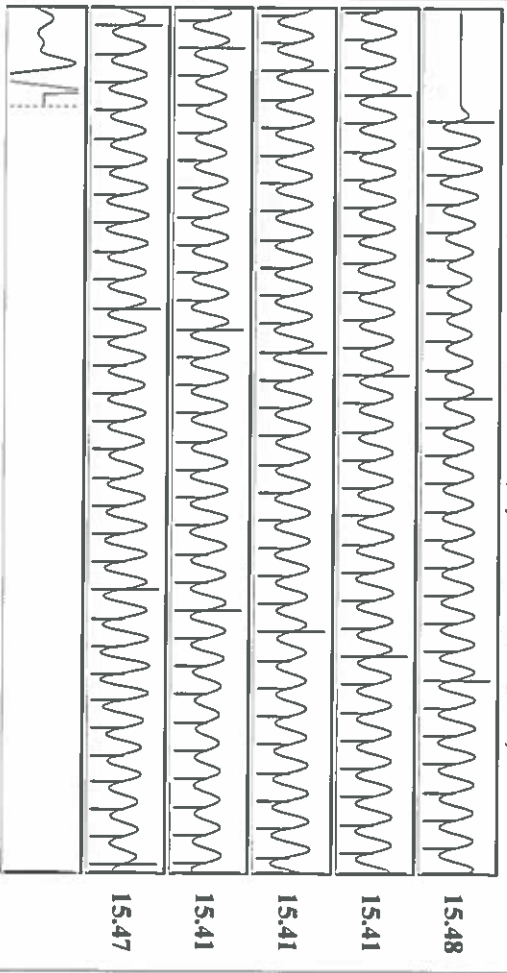
Pump Intake 53.0 psi (g)
Producing BHP 27.0 psi (g)
Static BHP - - - psi (g)

Group: LMLU Well: LMLU 601 (acquired on: 07/29/19 15:58:26)



Change in Pressure -0.27 psi
Change in Time 1.00 min
PT8197 Range
0 - ? psi

Group: LMLU Well: LMLU 601 (acquired on: 07/29/19 15:58:26)



Acoustic Velocity	999.383 N/s	Joints counted	150
Joints Per Second	15.4321 Jts/sec	Joints to Liquid level	157886
Depth to Liquid level	5112.34 ft	Filler Width	13.4083
Automatic Collar Count	Yes	Time to 1st Collar	0.26

August 05, 2019

Katherine McClurkan
Merit Energy Company, LLC
13727 Noel Road, Suite 1200
Dallas, TX 75240

Re: Temporary Abandonment
API 15-067-21509-00-00
Ladner Morrow Lime Unit 601
NE/4 Sec.24-27S-35W
Grant County, Kansas

Dear Katherine McClurkan:

"Your temporary abandonment (TA) application for the well listed above has been approved. In accordance with K.A.R. 82-3-111 the TA status of this well will expire 08/05/2020.

- * If you return this well to service or plug it, please notify the District Office.
- * If you sell this well you are required to file a Transfer of Operator form, T-1.
- * If the well will remain temporarily abandoned, you must submit a new TA application, CP-111, before 08/05/2020.

You may contact me at the number above if you have questions.

Very truly yours,

Michael Maier"