

KANSAS CORPORATION COMMISSION
OIL & GAS CONSERVATION DIVISION

TEMPORARY ABANDONMENT WELL APPLICATION

OPERATOR: License#
Name:
Address 1:
Address 2:
City: State: Zip:
Contact Person:
Phone:
Contact Person Email:
Field Contact Person:
Field Contact Person Phone:

API No. 15-
Spot Description:
Sec. Twp. S. R.
feet from N / S Line of Section
feet from E / W Line of Section
GPS Location: Lat: , Long:
Datum: NAD27 NAD83 WGS84
County: Elevation: GL KB
Lease Name: Well #:
Well Type: Oil Gas OG WSW Other:
SWD Permit #: ENHR Permit #:
Gas Storage Permit #:
Spud Date: Date Shut-In:

Table with 7 columns: Conductor, Surface, Production, Intermediate, Liner, Tubing. Rows include Size, Setting Depth, Amount of Cement, Top of Cement, Bottom of Cement.

Casing Fluid Level from Surface: How Determined? Date:
Casing Squeeze(s): to w / sacks of cement, to w / sacks of cement. Date:
Do you have a valid Oil & Gas Lease? Yes No
Depth and Type: Junk in Hole at Tools in Hole at Casing Leaks: Yes No Depth of casing leak(s):
Type Completion: ALT. I ALT. II Depth of: DV Tool: w / sacks of cement Port Collar: w / sack of cement
Packer Type: Size: Inch Set at: Feet
Total Depth: Plug Back Depth: Plug Back Method:

Geological Date:

Table with 4 columns: Formation Name, Formation Top, Formation Base, Completion Information. Rows 1 and 2.

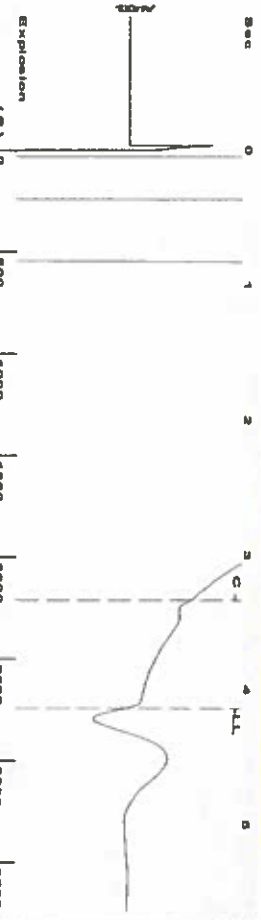
UNDER PENALTY OF PERJURY I HEREBY ATTEST THAT THE INFORMATION CONTAINED HEREIN IS TRUE AND CORRECT TO THE BEST OF MY KNOWLEDGE

Submitted Electronically

Do NOT Write in This Space - KCC USE ONLY
Date Tested: Results: Date Plugged: Date Repaired: Date Put Back in Service:
Review Completed by: Comments:
TA Approved: Yes Denied Date:

Mail to the Appropriate KCC Conservation Office:

Table with 3 columns: District Office #, Address, Phone. Rows 1-4.



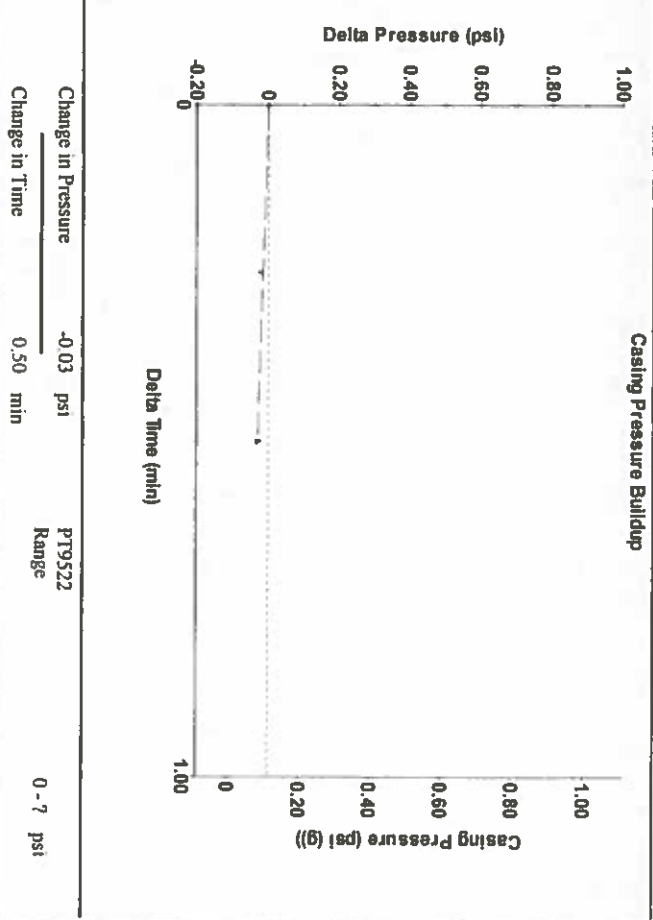
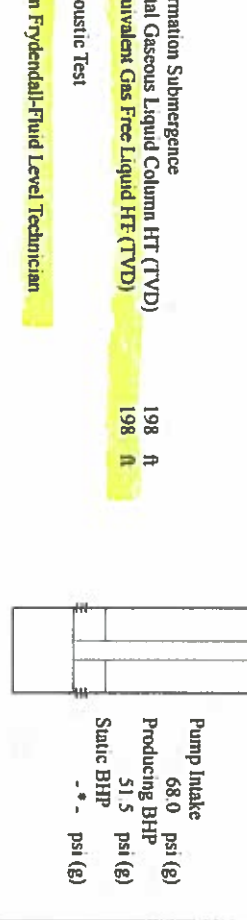
Filter Type High Pass Automatic Collar Count Yes  
 Manual Acoustic Vel 275.65 N/s Manual JTS/Sec 20.1207  
 Time 4.14 sec  
 Joints 86.4903 J/s  
 Depth 2741.74 ft



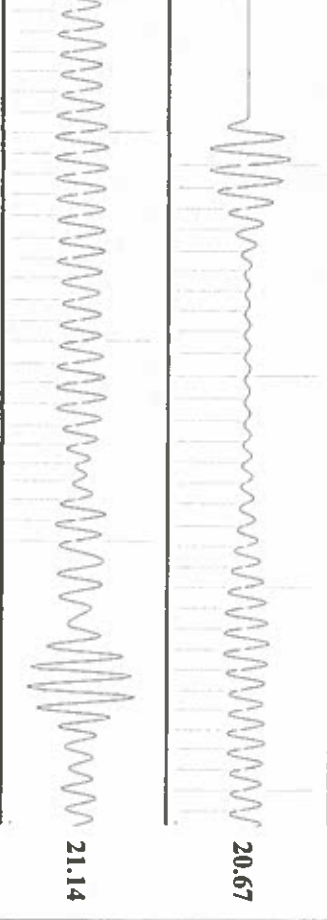
**Analysis Method: Automatic**

Group: Merrit Energy Company-Ulysses Well: Fry Brothers A-2 (acquired on: 07/25/19 14:36:08)

Production	Potential	Casing Pressure:	Producing
Oil -*-	BBL/D	0.1 psi (g)	Annular
Water -*-	BBL/D	Casing Pressure Buildup	Gas Flow
Gas -*-	Mscf/D	-0.030 psi	% Liquid
IPR Method	Vogel	0.50 min	% Mscf/D
PBHP/SBHP		Gas/Liquid Interface Pressure	
Production Efficiency	0.0	1.1 psi (g)	
Oil 40 deg API		Liquid Level Depth	
Water 1.05 Sp Gr H2O		2741.74 ft	
Gas 0.69 Sp Gr AIR		Pump Intake Depth	
Acoustic Velocity	1324.51 ft/s	2940.00 ft	
		Formation Depth	
		2891.00 ft	



Group: Merrit Energy Company-Ulysses Well: Fry Brothers A-2 (acquired on: 07/25/19 14:36:08)



Change in Pressure	-0.03 psi	PT9522	0 - 7 psi
Change in Time	0.50 min	Range	
Acoustic Velocity	1324.51 ft/s	Joints counted	60
Joints Per Second	20.8914 JTS/Sec	Joints to liquid level	86.4903
Depth to liquid level	2741.74 ft	Filter Width	18.1207
Automatic Collar Count	Yes	Time to 1st Collar	0.464
			3.336

August 05, 2019

Katherine McClurkan  
Merit Energy Company, LLC  
13727 Noel Road, Suite 1200  
Dallas, TX 75240

Re: Temporary Abandonment  
API 15-067-20499-00-00  
Fry Brothers A 2  
NE/4 Sec.34-28S-35W  
Grant County, Kansas

Dear Katherine McClurkan:

"Your temporary abandonment (TA) application for the well listed above has been approved. In accordance with K.A.R. 82-3-111 the TA status of this well will expire 08/05/2020.

- \* If you return this well to service or plug it, please notify the District Office.
- \* If you sell this well you are required to file a Transfer of Operator form, T-1.
- \* If the well will remain temporarily abandoned, you must submit a new TA application, CP-111, before 08/05/2020.

You may contact me at the number above if you have questions.

Very truly yours,

Michael Maier"