

KANSAS CORPORATION COMMISSION
OIL & GAS CONSERVATION DIVISION

TEMPORARY ABANDONMENT WELL APPLICATION

OPERATOR: License#
Name:
Address 1:
Address 2:
City: State: Zip:
Contact Person:
Phone:
Contact Person Email:
Field Contact Person:
Field Contact Person Phone:

API No. 15-
Spot Description:
Sec. Twp. S. R.
GPS Location: Lat: Long:
Datum: NAD27 NAD83 WGS84
County: Elevation:
Lease Name: Well #:
Well Type: Oil Gas OG WSW Other:
SWD Permit #: ENHR Permit #:
Gas Storage Permit #:
Spud Date: Date Shut-In:

Table with 7 columns: Conductor, Surface, Production, Intermediate, Liner, Tubing. Rows include Size, Setting Depth, Amount of Cement, Top of Cement, Bottom of Cement.

Casing Fluid Level from Surface: How Determined? Date:
Casing Squeeze(s): to w / sacks of cement, to w / sacks of cement. Date:
Do you have a valid Oil & Gas Lease? Yes No
Depth and Type: Junk in Hole at Tools in Hole at Casing Leaks: Yes No Depth of casing leak(s):
Type Completion: ALT. I ALT. II Depth of: DV Tool: w / sacks of cement Port Collar: w / sack of cement
Packer Type: Size: Inch Set at: Feet
Total Depth: Plug Back Depth: Plug Back Method:

Geological Data:

Table with 4 columns: Formation Name, Formation Top, Formation Base, Completion Information. Rows 1 and 2.

UNDER PENALTY OF PERJURY I HEREBY ATTEST THAT THE INFORMATION CONTAINED HEREIN IS TRUE AND CORRECT TO THE BEST OF MY KNOWLEDGE

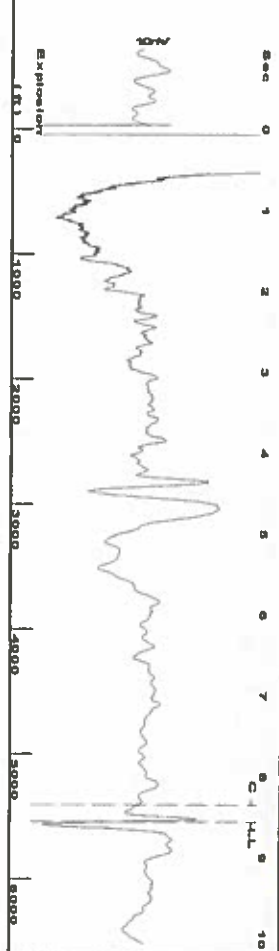
Submitted Electronically

Do NOT Write in This Space - KCC USE ONLY
Date Tested: Results: Date Plugged: Date Repaired: Date Put Back in Service:
Review Completed by: Comments:
TA Approved: Yes Denied Date:

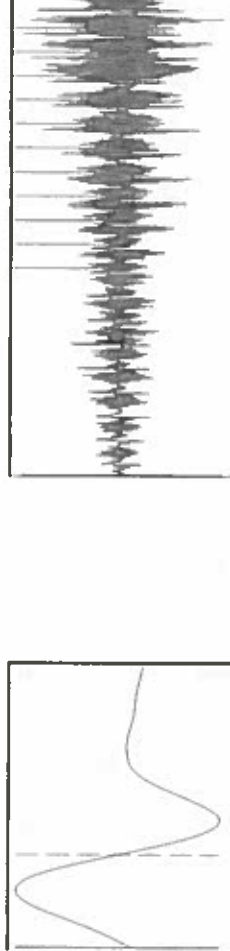
Mail to the Appropriate KCC Conservation Office:

Table with 3 columns: District Office #, Address, Phone. Rows 1-4.

Group: Oxy USA Ulysses Well: McPherson College 4-E21 (acquired on: 07/15/19 14:04:07)



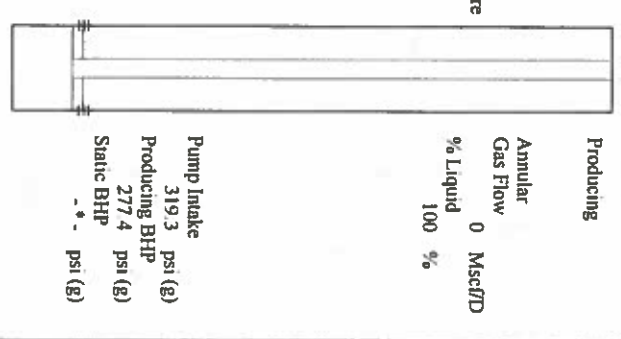
Filter Type High Pass Automatic Collar Count Yes
 Manual Acoustic Veloc 1283.4 R/s Manual JTS/sec 20.2429
 Time 8.56 sec
 Joints 174.783 J/s
 Depth 5540.62 ft



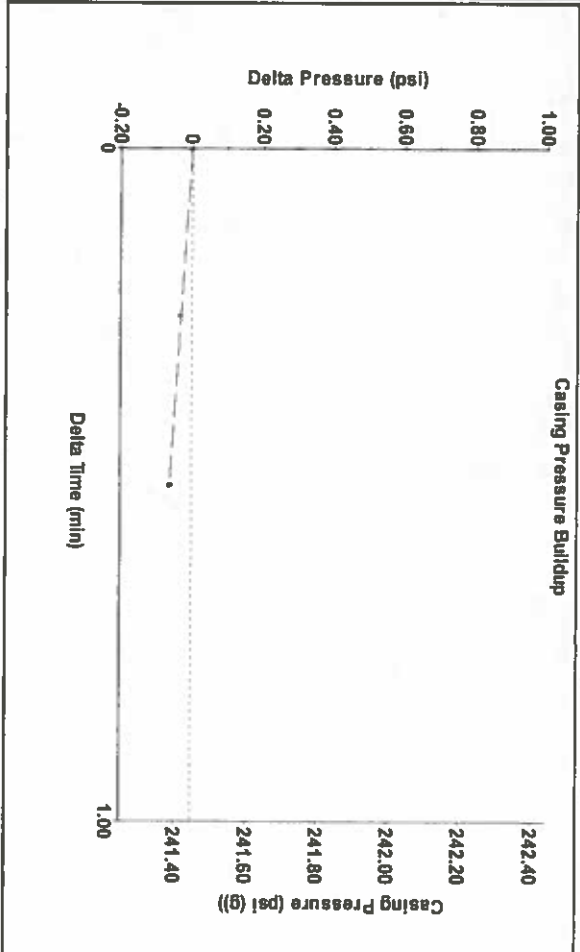
Analysis Method: Automatic

Group: Oxy USA Ulysses Well: McPherson College 4-E21 (acquired on: 07/15/19 14:04:07)

Production	Current	Potential	Casing Pressure	Producing
Oil	0.0	0.0	241.4 psi (g)	Annular
Water	0.0	0.0	0.060 psi	Gas Flow
Gas	0.0	0.0	0.50 min	% Liquid
IPR Method	PBHP/SBHP	Vogel	Gas/Liquid Interface Pressure	0 Mscf/D
Production Efficiency	0.0	0.0	277.4 psi (g)	100 %
Oil	40 deg API	Liquid Level Depth	Pump Intake Depth	
Water	1.05 Sp.Gr.H2O	5540.62 ft	5667.00 ft	
Gas	0.69 Sp.Gr.AIR		Formation Depth	
Acoustic Velocity	1294.54 ft/s		5530.00 ft	
Formation Submergence				
Total Gaseous Liquid Column HT (TVVD)				
Equivalent Gas Free Liquid HT (TVVD)				
Acoustic Test				
Trim Fydedall-Fluid Level Technician				

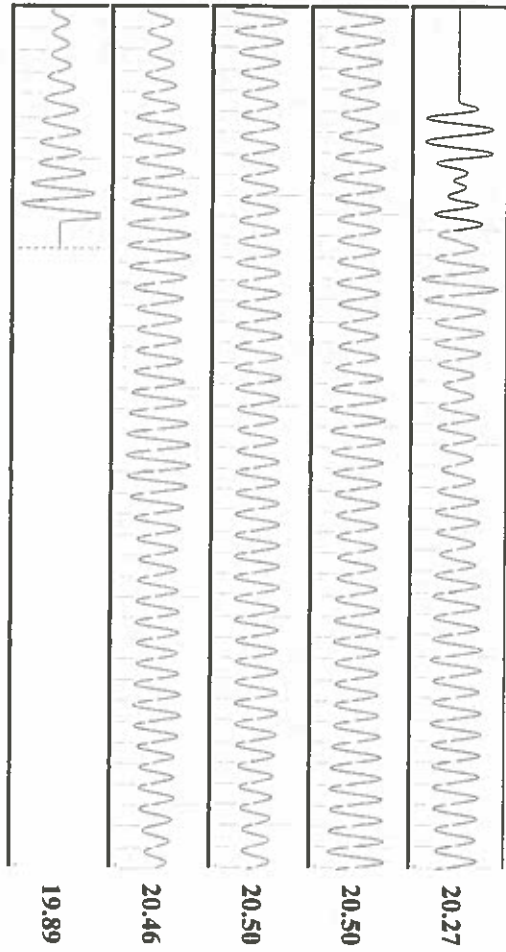


Group: Oxy USA Ulysses Well: McPherson College 4-E21 (acquired on: 07/15/19 14:04:07)



Change in Pressure -0.06 psi
 Change in Time 0.50 min
 FT9522 Range 0 - 7 psi

Group: Oxy USA Ulysses Well: McPherson College 4-E21 (acquired on: 07/15/19 14:04:07)



Acoustic Velocity 1294.54 ft/s
 Joints Per Second 20.4186 J/s/sec
 Depth to liquid level 5540.62 ft
 Automatic Collar Count Yes

Joints counted 160
 Joints to liquid level 174.783
 Filter Width 18.2429
 Time to 1st Collar 0.516

August 05, 2019

Katherine McClurkan
Merit Energy Company, LLC
13727 Noel Road, Suite 1200
Dallas, TX 75240

Re: Temporary Abandonment
API 15-187-21095-00-00
McPherson College 4-E21-29-39
NW/4 Sec.21-29S-39W
Stanton County, Kansas

Dear Katherine McClurkan:

Your application for Temporary Abandonment (TA) for the above-listed well is denied for the following reasons(s):

Shut-in Over 10 years

Pursuant to K.A.R. 82-3-111, the well must be plugged or returned to service by September 02, 2019.

If you wish to instead file an application for an exception to the 10-year limitation of K.A.R. 82-3-111, demonstrating why it is necessary to TA the well for more than 10 years, then you must file the application for an exception by September 02, 2019.

This deadline does NOT override any compliance deadline given to you in any Commission Order.

You may contact me if you have any questions.

Sincerely,
Michael Maier
KCC DISTRICT 1