

KANSAS CORPORATION COMMISSION
OIL & GAS CONSERVATION DIVISION

TEMPORARY ABANDONMENT WELL APPLICATION

OPERATOR: License#
Name:
Address 1:
Address 2:
City: State: Zip:
Contact Person:
Phone:
Contact Person Email:
Field Contact Person:
Field Contact Person Phone:

API No. 15-
Spot Description:
Sec. Twp. S. R.
GPS Location: Lat: Long:
Datum: NAD27 NAD83 WGS84
County: Elevation:
Lease Name: Well #:
Well Type: Oil Gas OG WSW Other:
SWD Permit #: ENHR Permit #:
Gas Storage Permit #:
Spud Date: Date Shut-In:

Table with 7 columns: Conductor, Surface, Production, Intermediate, Liner, Tubing. Rows include Size, Setting Depth, Amount of Cement, Top of Cement, Bottom of Cement.

Casing Fluid Level from Surface: How Determined? Date:
Casing Squeeze(s): to w / sacks of cement, to w / sacks of cement. Date:
Do you have a valid Oil & Gas Lease? Yes No
Depth and Type: Junk in Hole at Tools in Hole at Casing Leaks: Yes No Depth of casing leak(s):
Type Completion: ALT. I ALT. II Depth of: DV Tool: w / sacks of cement Port Collar: w / sack of cement
Packer Type: Size: Inch Set at: Feet
Total Depth: Plug Back Depth: Plug Back Method:

Geological Data:

Table with 4 columns: Formation Name, Formation Top, Formation Base, Completion Information. Rows 1 and 2.

UNDER PENALTY OF PERJURY I HEREBY ATTEST THAT THE INFORMATION CONTAINED HEREIN IS TRUE AND CORRECT TO THE BEST OF MY KNOWLEDGE

Submitted Electronically

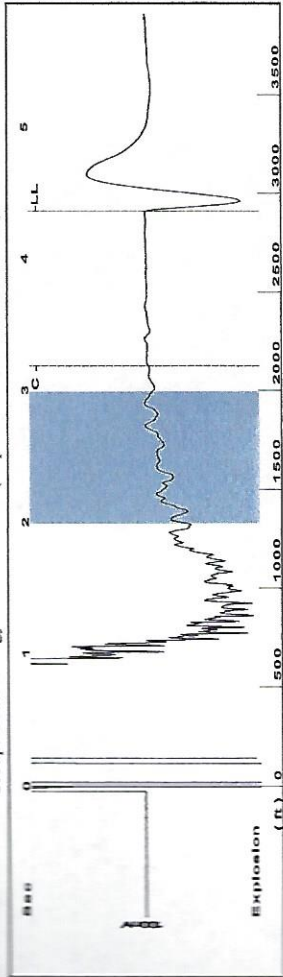
Do NOT Write in This Space - KCC USE ONLY
Date Tested: Results: Date Plugged: Date Repaired: Date Put Back in Service:
Review Completed by: Comments:
TA Approved: Yes Denied Date:

Mail to the Appropriate KCC Conservation Office:

Table with 2 columns: Office Address, Phone. Rows for District Office #1, #2, #3, #4.

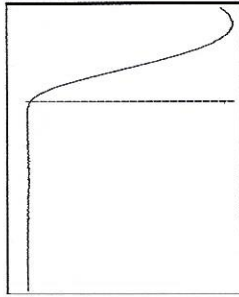
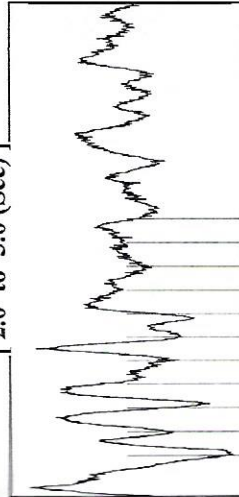


Group: Coats Energy Well: Clarke (acquired on: 08/05/19 17:22:57)



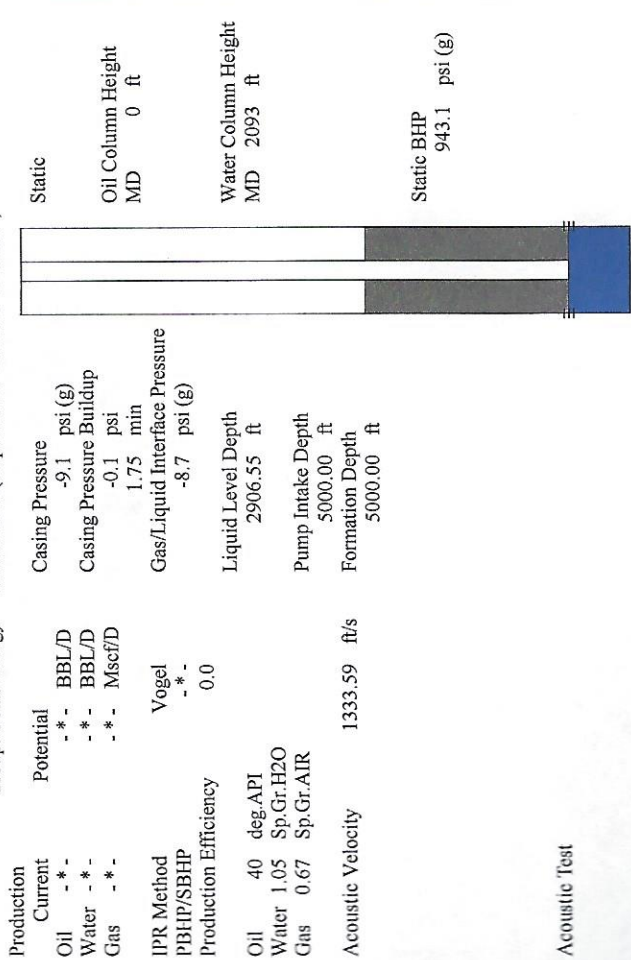
Filter Type High Pass
 Manual Acoustic Velo 1320.83 ft/s
 Automatic Collar Count Yes
 Manual JTS/sec 20.8333
 Time 4.359 sec
 Joints 91.6893 Jts
 Depth 2906.55 ft

[2.0 to 3.0 (Sec)]

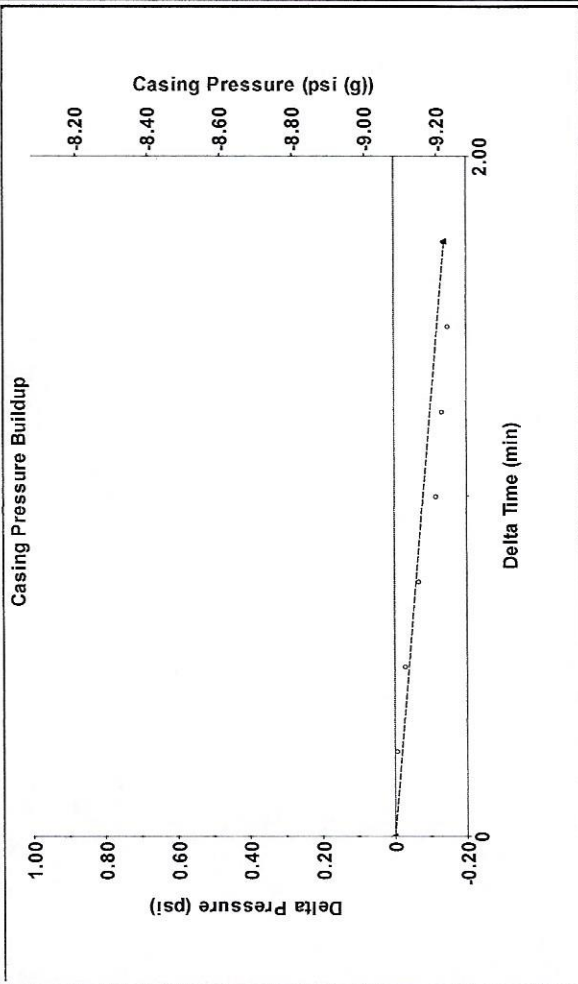


Analysis Method: Automatic

Group: Coats Energy Well: Clarke (acquired on: 08/05/19 17:22:57)

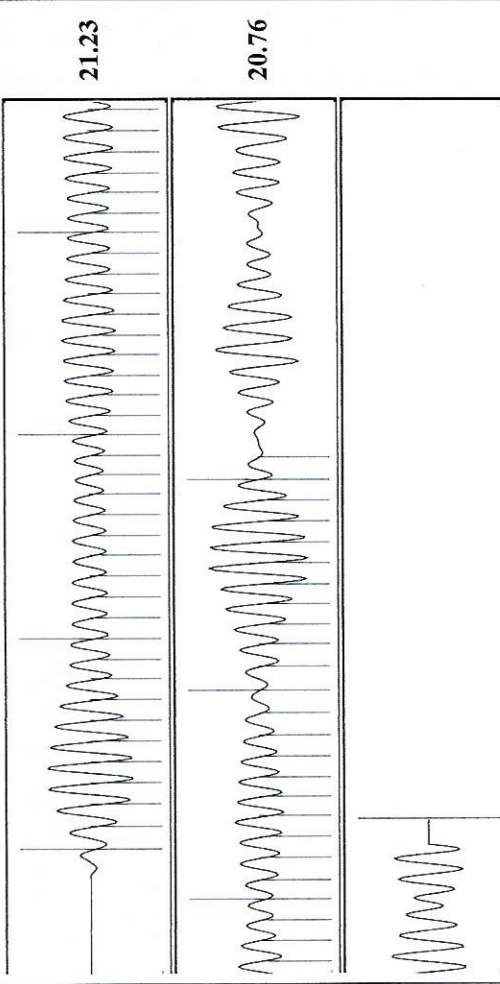


Group: Coats Energy Well: Clarke (acquired on: 08/05/19 17:22:57)



Change in Pressure -0.14 psi
 Change in Time 1.75 min
 PT8496 Range

Group: Coats Energy Well: Clarke (acquired on: 08/05/19 17:22:57)



Acoustic Velocity 1333.59 ft/s
 Joints Per Second 21.0345 jts/sec
 Depth to liquid level 2906.55 ft
 Automatic Collar Count Yes
 Joints counted 61
 Joints to liquid level 91.6893
 Filter Width 18.8333
 Time to 1st Collar 0.288
 22.8333
 3.188

August 13, 2019

Casey Coats
Coats Energy, Inc.
PO BOX 744
WICHITA, KS 67201-0744

Re: Temporary Abandonment
API 15-007-22539-00-00
CLARKE 1
NW/4 Sec.07-31S-12W
Barber County, Kansas

Dear Casey Coats:

"Your temporary abandonment (TA) application for the well listed above has been approved. In accordance with K.A.R. 82-3-111 the TA status of this well will expire 08/13/2020.

- * If you return this well to service or plug it, please notify the District Office.
- * If you sell this well you are required to file a Transfer of Operator form, T-1.
- * If the well will remain temporarily abandoned, you must submit a new TA application, CP-111, before 08/13/2020.

You may contact me at the number above if you have questions.

Very truly yours,

Michael Maier"