

KANSAS CORPORATION COMMISSION
OIL & GAS CONSERVATION DIVISION

TEMPORARY ABANDONMENT WELL APPLICATION

OPERATOR: License#
Name:
Address 1:
Address 2:
City: State: Zip:
Contact Person:
Phone:
Contact Person Email:
Field Contact Person:
Field Contact Person Phone:

API No. 15-
Spot Description:
Sec. Twp. S. R.
GPS Location: Lat: Long:
Datum: NAD27 NAD83 WGS84
County: Elevation:
Lease Name: Well #:
Well Type: Oil Gas OG WSW Other:
SWD Permit #: ENHR Permit #:
Gas Storage Permit #:
Spud Date: Date Shut-In:

Table with 7 columns: Conductor, Surface, Production, Intermediate, Liner, Tubing. Rows include Size, Setting Depth, Amount of Cement, Top of Cement, Bottom of Cement.

Casing Fluid Level from Surface: How Determined? Date:
Casing Squeeze(s): to w / sacks of cement, to w / sacks of cement. Date:
Do you have a valid Oil & Gas Lease? Yes No
Depth and Type: Junk in Hole at Tools in Hole at Casing Leaks: Yes No Depth of casing leak(s):
Type Completion: ALT. I ALT. II Depth of: DV Tool: w / sacks of cement Port Collar: w / sack of cement
Packer Type: Size: Inch Set at: Feet
Total Depth: Plug Back Depth: Plug Back Method:

Geological Date:

Table with 4 columns: Formation Name, Formation Top, Formation Base, Completion Information. Rows 1 and 2.

UNDER PENALTY OF PERJURY I HEREBY ATTEST THAT THE INFORMATION CONTAINED HEREIN IS TRUE AND CORRECT TO THE BEST OF MY KNOWLEDGE

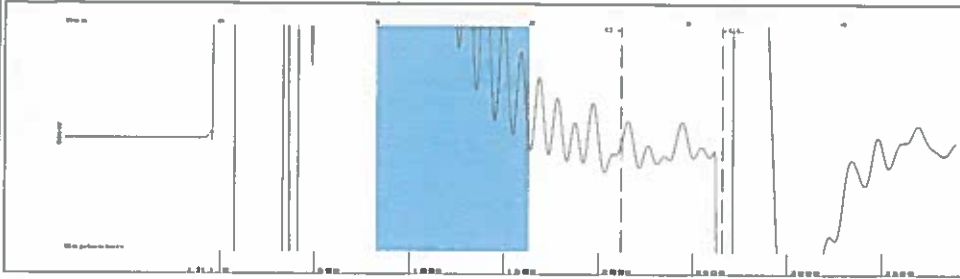
Submitted Electronically

Do NOT Write in This Space - KCC USE ONLY
Date Tested: Results: Date Plugged: Date Repaired: Date Put Back in Service:
Review Completed by: Comments:
TA Approved: Yes Denied Date:

Mail to the Appropriate KCC Conservation Office:

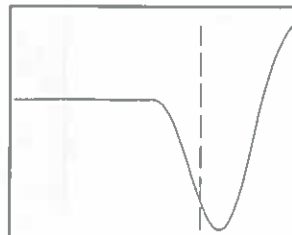
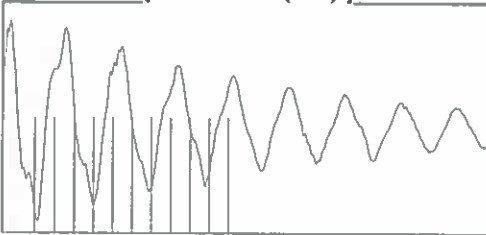
Table with 3 columns: District Office #, Address, Phone. Rows 1-4.

Group: SUBLETTE Well: GREEN H-1 (acquired on: 08/07/19 11:36:19)



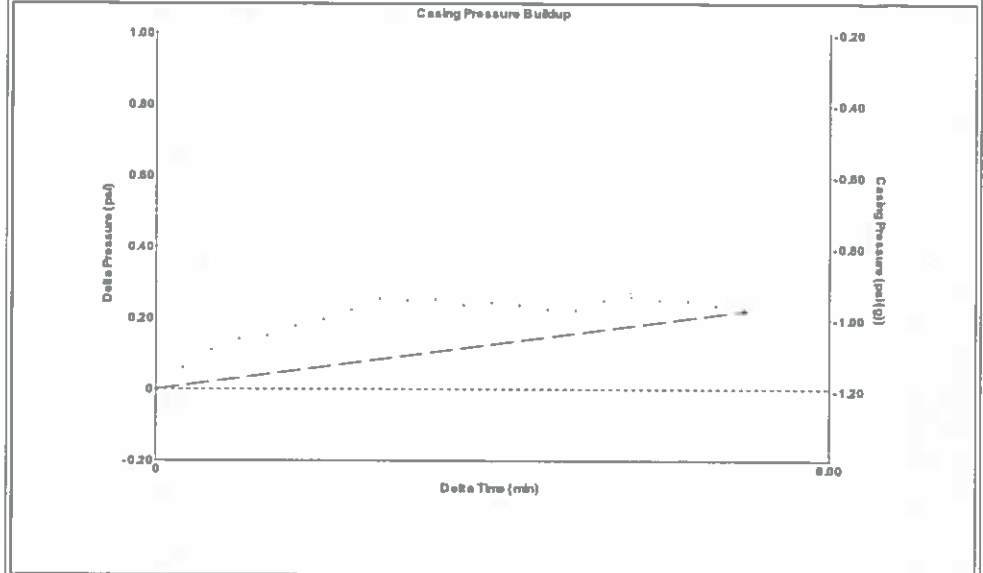
Filter Type High Pass Automatic Collar Count Yes Time 3.231 sec  
 Manual Acoustic Velo 1601.01 ft/s Manual JTS/sec 25.2525 Joints 83.8495 Jts  
 Depth 2658.03 ft

[ 1.0 to 2.0 (Sec) ]



Analysis Method: Automatic

Group: SUBLETTE Well: GREEN H-1 (acquired on: 08/07/19 11:36:19)



Change in Pressure 0.22 psi PT14679  
 Change in Time 5.25 min Range 0 - ? psi

Group: SUBLETTE Well: GREEN H-1 (acquired on: 08/07/19 11:36:19)

Production Current Potential  
 Oil -\*- -\*- BBL/D  
 Water -\*- -\*- BBL/D  
 Gas -\*- -\*- Mscf/D  
 IPR Method Vogel  
 PBIHP/SBIHP -\*-  
 Production Efficiency 0.0  
 Oil 40 deg-API  
 Water 1.05 Sp.Gr.H2O  
 Gas 0.55 Sp.Gr.AIR  
 Acoustic Velocity 1645.33 ft/s

Casing Pressure -1.2 psi (g)  
 Casing Pressure Buildup 0.2 psi  
 5.25 min  
 Gas/Liquid Interface Pressure -0.5 psi (g)  
 Liquid Level Depth 2658.03 ft  
 Pump Intake Depth -\*- ft  
 Formation Depth 5520.00 ft



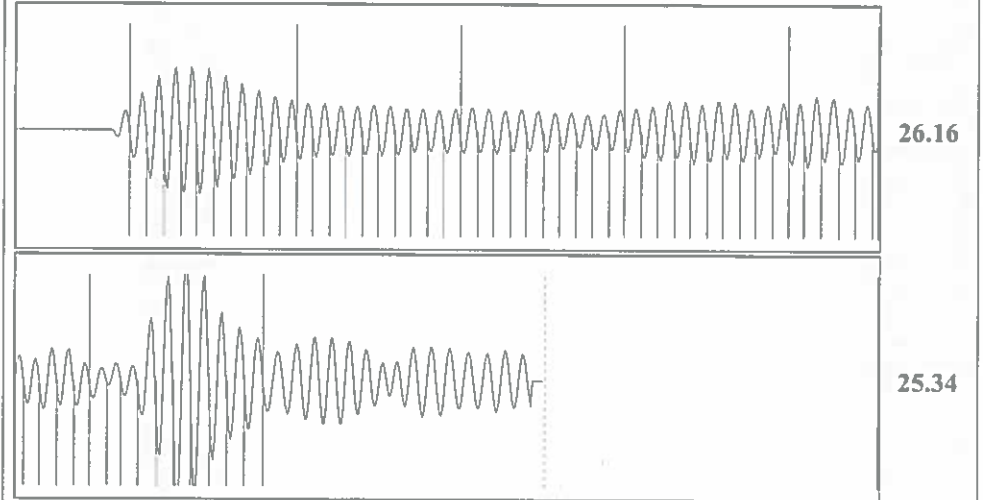
Producing  
 Annular Gas Flow -\*- Mscf/D  
 % Liquid 96 %

Formation Submergence  
 Total Gaseous Liquid Column HT (TVD) 2862 ft  
 Equivalent Gas Free Liquid HT (TVD) 2748 ft

Acoustic Test

Pump Intake -\*- psi (g)  
 Producing BHP 1250.4 psi (g)  
 Static BHP -\*- psi (g)

Group: SUBLETTE Well: GREEN H-1 (acquired on: 08/07/19 11:36:19)



Acoustic Velocity 1645.33 ft/s Joints counted 60  
 Joints Per Second 25.9516 jts/sec Joints to liquid level 83.8495  
 Depth to liquid level 2658.03 ft Filter Width 23.2525 27.2525  
 Automatic Collar Count Yes Time to 1st Collar 0.264 2.576

August 13, 2019

Katherine McClurkan  
Merit Energy Company, LLC  
13727 Noel Road, Suite 1200  
Dallas, TX 75240

Re: Temporary Abandonment  
API 15-081-22023-00-01  
Green H 1  
SW/4 Sec.10-28S-34W  
Haskell County, Kansas

Dear Katherine McClurkan:

"Your temporary abandonment (TA) application for the well listed above has been approved. In accordance with K.A.R. 82-3-111 the TA status of this well will expire 08/13/2020.

- \* If you return this well to service or plug it, please notify the District Office.
- \* If you sell this well you are required to file a Transfer of Operator form, T-1.
- \* If the well will remain temporarily abandoned, you must submit a new TA application, CP-111, before 08/13/2020.

You may contact me at the number above if you have questions.

Very truly yours,

Michael Maier"