

KANSAS CORPORATION COMMISSION
OIL & GAS CONSERVATION DIVISION

TEMPORARY ABANDONMENT WELL APPLICATION

OPERATOR: License#
Name:
Address 1:
Address 2:
City: State: Zip:
Contact Person:
Phone:
Contact Person Email:
Field Contact Person:
Field Contact Person Phone:

API No. 15-
Spot Description:
Sec. Twp. S. R.
GPS Location: Lat: Long:
Datum: NAD27 NAD83 WGS84
County: Elevation:
Lease Name: Well #:
Well Type: Oil Gas OG WSW Other:
SWD Permit #: ENHR Permit #:
Gas Storage Permit #:
Spud Date: Date Shut-In:

Table with 7 columns: Conductor, Surface, Production, Intermediate, Liner, Tubing. Rows include Size, Setting Depth, Amount of Cement, Top of Cement, Bottom of Cement.

Casing Fluid Level from Surface: How Determined? Date:
Casing Squeeze(s): to w / sacks of cement, to w / sacks of cement. Date:
Do you have a valid Oil & Gas Lease? Yes No
Depth and Type: Junk in Hole at Tools in Hole at Casing Leaks: Yes No Depth of casing leak(s):
Type Completion: ALT. I ALT. II Depth of: DV Tool: w / sacks of cement Port Collar: w / sack of cement
Packer Type: Size: Inch Set at: Feet
Total Depth: Plug Back Depth: Plug Back Method:

Geological Data:

Table with 4 columns: Formation Name, Formation Top, Formation Base, Completion Information. Rows 1 and 2.

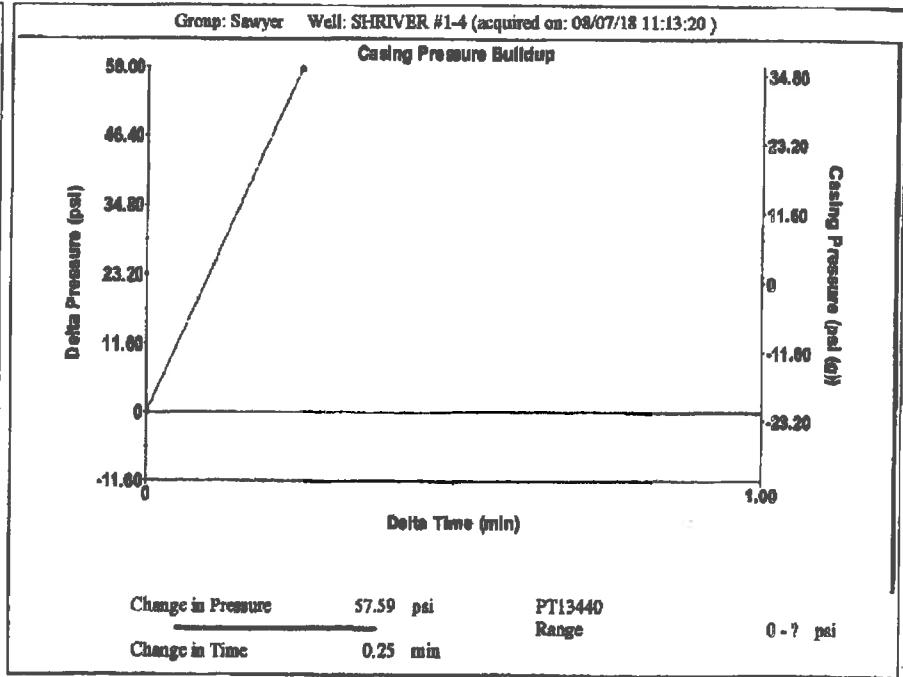
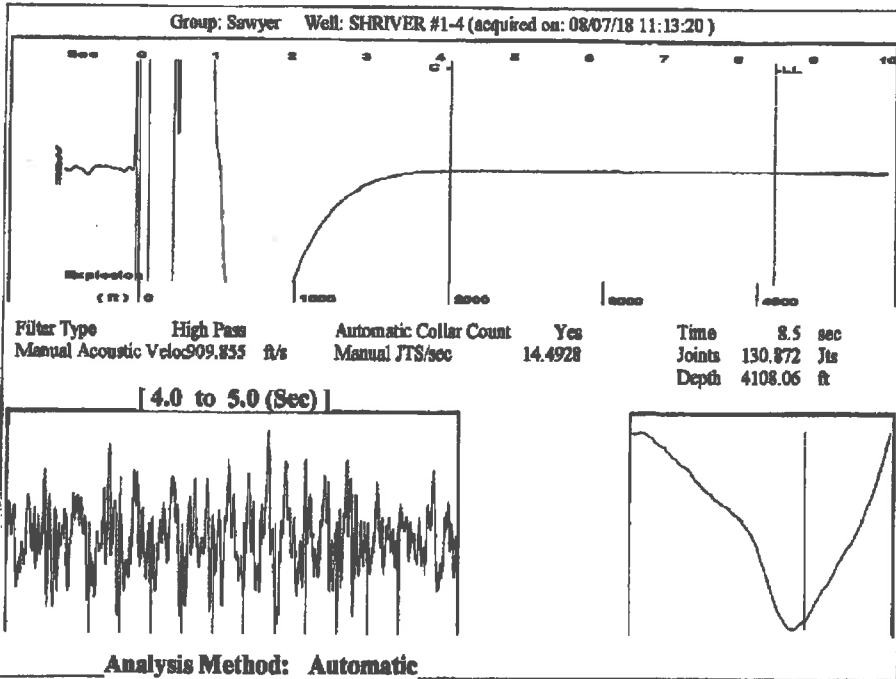
UNDER PENALTY OF PERJURY I HEREBY ATTEST THAT THE INFORMATION CONTAINED HEREIN IS TRUE AND CORRECT TO THE BEST OF MY KNOWLEDGE

Submitted Electronically

Do NOT Write in This Space - KCC USE ONLY
Date Tested: Results: Date Plugged: Date Repaired: Date Put Back in Service:
Review Completed by: Comments:
TA Approved: Yes Denied Date:

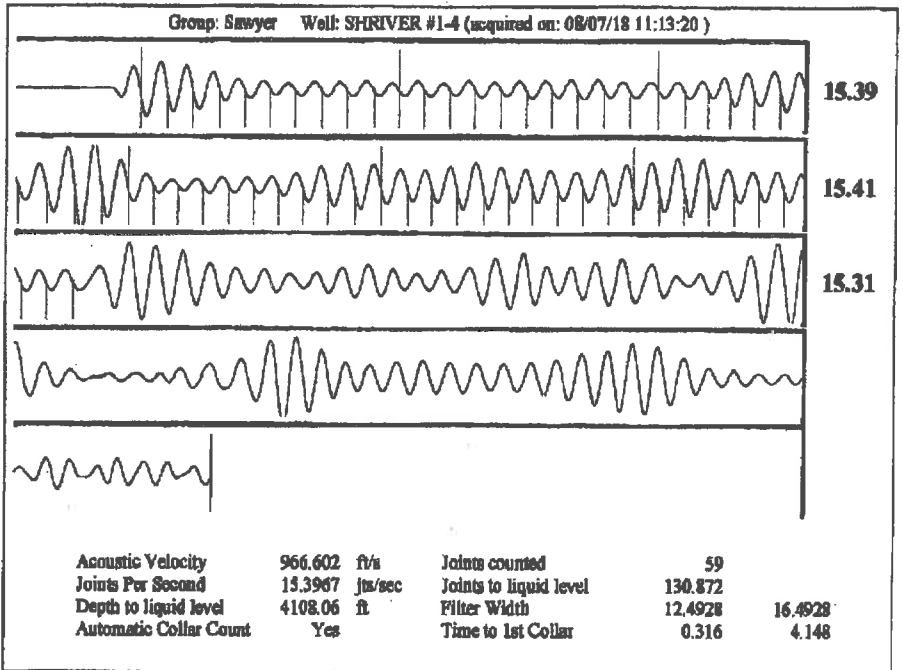
Mail to the Appropriate KCC Conservation Office:

Table with 2 columns: Office Address, Phone. Rows for District Office #1, #2, #3, #4.



Group: Sawyer Well: SHRIVER #1-4 (acquired on: 08/07/18 11:13:20)

Production Current	Potential	Casing Pressure	Producing
Oil -.-	-.- BBL/D	-14.7 psi (g)	
Water -.-	-.- BBL/D	Casing Pressure Buildup	Annular Gas Flow
Gas -.-	-.- Macf/D	57.6 psi	0 Macf/D
		0.25 min	% Liquid
IPR Method	Vogel	Gas/Liquid Interface Pressure	100 %
PBHP/SBHP	-.-	2.5 psi (g)	
Production Efficiency	0.0		
Oil 40 deg.API		Liquid Level Depth	
Water 1.05 Sp.Gr.H2O		4108.06 ft	
Gas 1.02 Sp.Gr.AIR		Pump Intake Depth	
		4615.00 ft	
Acoustic Velocity	966.602 ft/s	Formation Depth	
		4552.00 ft	
Formation Submergence		Pump Intake	
Total Gaseous Liquid Column HT (TVD)	507 ft	175.7 psi (g)	
Equivalent Gas Free Liquid HT (TVD)	507 ft	Producing BHP	
		154.4 psi (g)	
Acoustic Test		Static BHP	
		-.- psi (g)	



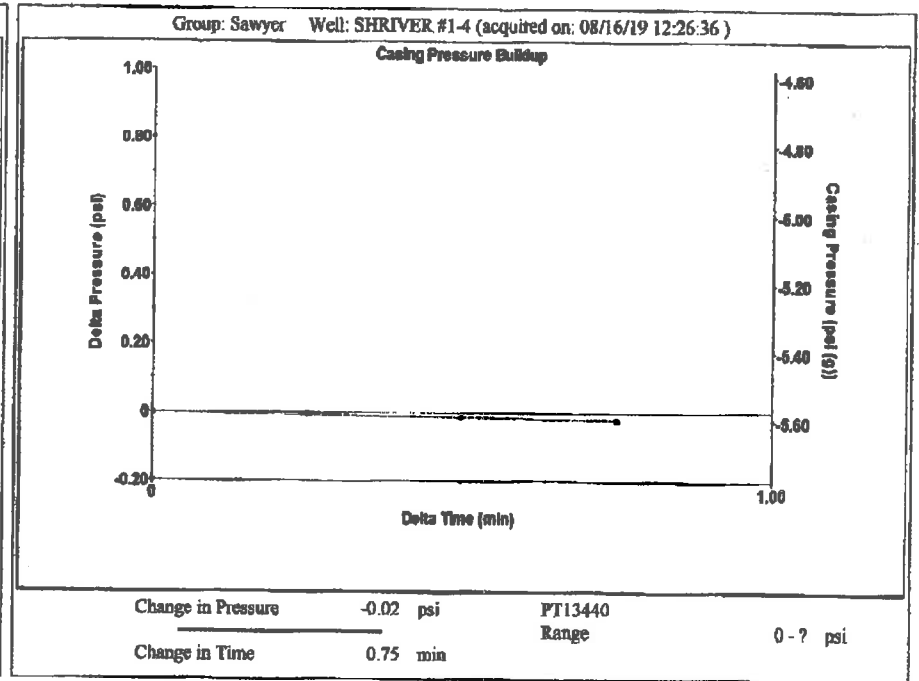
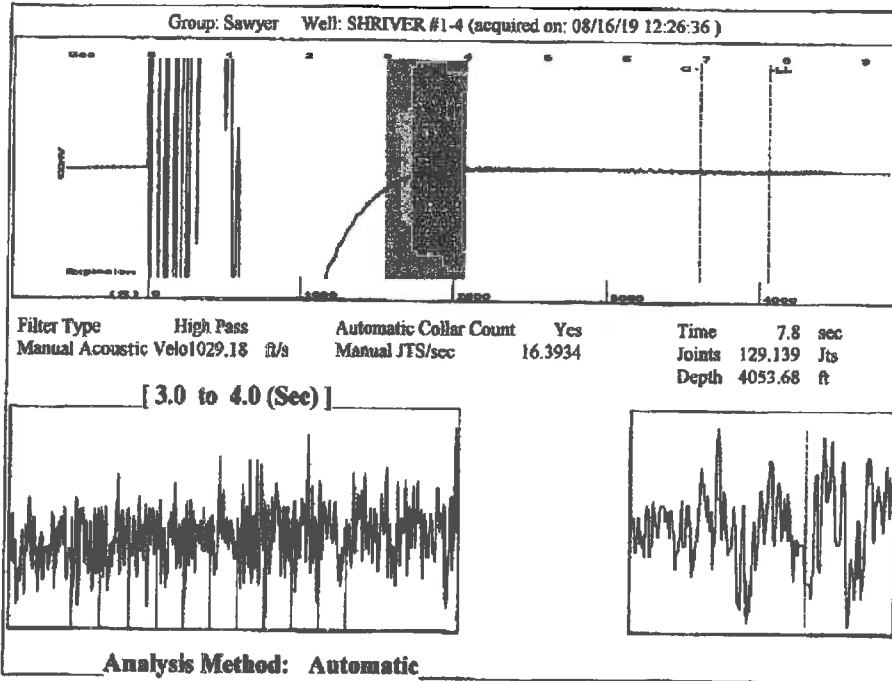
Attention Loueness

4 pages including cover

TA Renewal, not witnessed by state

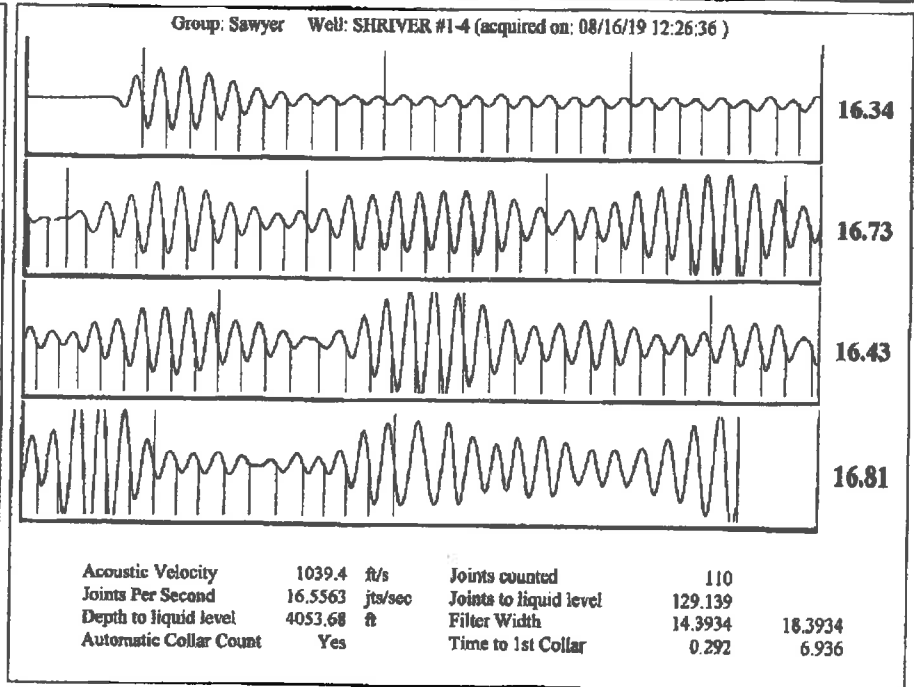
I cant access shriver J owmo 1-4
Due to wet field + no lease road

J. Shanks
Jf



Group: Sawyer Well: SHRIVER #1-4 (acquired on: 08/16/19 12:26:36)

Production	Potential	Casing Pressure	Producing
Current			
Oil - * -	- * - BBL/D	-5.6 psi (g)	
Water - * -	- * - BBL/D	Casing Pressure Buildup	Annular
Gas - * -	- * - Mscf/D	-0.0 psi	Gas Flow
		0.75 min	0 Mscf/D
IPR Method	Vogel	Gas/Liquid Interface Pressure	% Liquid
PRHP/SBHP	- * -	-4.3 psi (g)	100 %
Production Efficiency	0.0		
Oil 40 deg.API		Liquid Level Depth	
Water 1.05 Sp.Gr.H2O		4053.68 ft	
Gas 0.95 Sp.Gr.AIR		Pump Intake Depth	
		4615.00 ft	
Acoustic Velocity 1039.4 ft/s		Formation Depth	
		4552.00 ft	
Formation Submergence			Pump Intake
Total Gaseous Liquid Column HT (TVD)	561 ft		187.1 psi (g)
Equivalent Gas Free Liquid HT (TVD)	561 ft		Producing BHP
			165.8 psi (g)
Acoustic Test			Static BHP
			- * - psi (g)



August 20, 2019

Loveness Mpanje
F. G. Holl Company L.L.C.
9431 E CENTRAL STE 100
WICHITA, KS 67206-2563

Re: Temporary Abandonment
API 15-007-22728-00-02
SHRIVER J M OWWO 1-4
SE/4 Sec.04-30S-14W
Barber County, Kansas

Dear Loveness Mpanje:

"Your temporary abandonment (TA) application for the well listed above has been approved. In accordance with K.A.R. 82-3-111 the TA status of this well will expire 08/20/2020.

- * If you return this well to service or plug it, please notify the District Office.
- * If you sell this well you are required to file a Transfer of Operator form, T-1.
- * If the well will remain temporarily abandoned, you must submit a new TA application, CP-111, before 08/20/2020.

You may contact me at the number above if you have questions.

Very truly yours,

Michael Maier"