

KANSAS CORPORATION COMMISSION
OIL & GAS CONSERVATION DIVISION

TEMPORARY ABANDONMENT WELL APPLICATION

OPERATOR: License#
Name:
Address 1:
Address 2:
City: State: Zip:
Contact Person:
Phone:
Contact Person Email:
Field Contact Person:
Field Contact Person Phone:

API No. 15-
Spot Description:
Sec. Twp. S. R.
feet from N / S Line of Section
feet from E / W Line of Section
GPS Location: Lat: , Long:
Datum: NAD27 NAD83 WGS84
County: Elevation: GL KB
Lease Name: Well #:
Well Type: Oil Gas OG WSW Other:
SWD Permit #: ENHR Permit #:
Gas Storage Permit #:
Spud Date: Date Shut-In:

Table with 7 columns: Conductor, Surface, Production, Intermediate, Liner, Tubing. Rows include Size, Setting Depth, Amount of Cement, Top of Cement, Bottom of Cement.

Casing Fluid Level from Surface: How Determined? Date:
Casing Squeeze(s): to w / sacks of cement, to w / sacks of cement. Date:
Do you have a valid Oil & Gas Lease? Yes No
Depth and Type: Junk in Hole at Tools in Hole at Casing Leaks: Yes No Depth of casing leak(s):
Type Completion: ALT. I ALT. II Depth of: DV Tool: w / sacks of cement Port Collar: w / sack of cement
Packer Type: Size: Inch Set at: Feet
Total Depth: Plug Back Depth: Plug Back Method:

Geological Data:

Table with 4 columns: Formation Name, Formation Top, Formation Base, Completion Information. Rows 1 and 2.

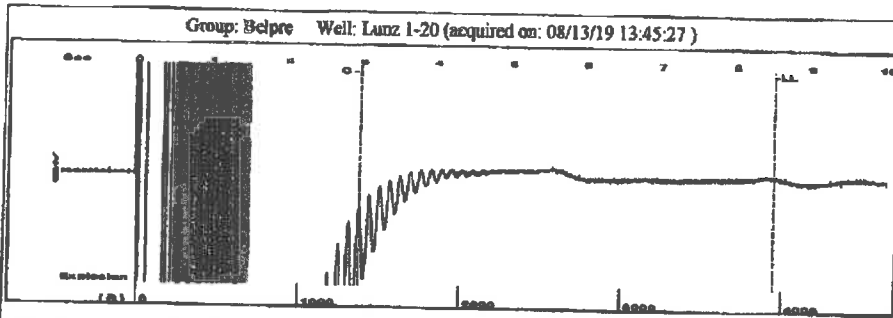
UNDER PENALTY OF PERJURY I HEREBY ATTEST THAT THE INFORMATION CONTAINED HEREIN IS TRUE AND CORRECT TO THE BEST OF MY KNOWLEDGE

Submitted Electronically

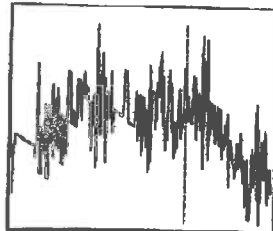
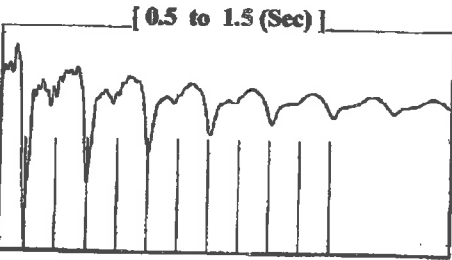
Do NOT Write in This Space - KCC USE ONLY
Date Tested: Results: Date Plugged: Date Repaired: Date Put Back in Service:
Review Completed by: Comments:
TA Approved: Yes Denied Date:

Mail to the Appropriate KCC Conservation Office:

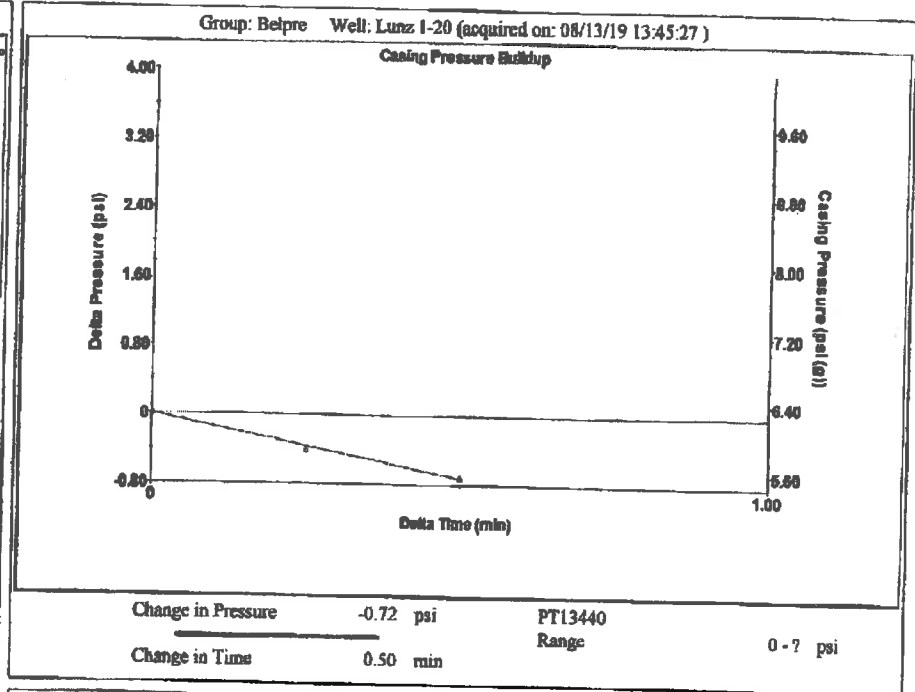
Table with 3 columns: District Office #, Address, Phone. Rows 1-4.



Filter Type High Pass Automatic Collar Count Yes Time 8.5 sec
 Manual Acoustic Velo 928.889 ft/s Manual JTS/sec 14.8148 Joints 125.95 Jts
 Depth 3948.53 ft



Analysis Method: Automatic



Group: Belpre Well: Lunz 1-20 (acquired on: 08/13/19 13:45:27)

Production Current	Potential	Casing Pressure	Producing
Oil -*- BBL/D	-*- BBL/D	6.3 psi (g)	Annular Gas Flow
Water -*- BBL/D	-*- BBL/D	Casing Pressure Buildup -0.723 psi	0 Msc/D
Gas -*- Msc/D	-*- Msc/D	0.50 min	% Liquid 100 %
IPR Method Vogel		Gas/Liquid Interface Pressure 9.4 psi (g)	
PBHP/SBHP -*-		Liquid Level Depth 3948.53 ft	
Production Efficiency 0.0		Pump Intake Depth 4327.00 ft	
Oil 40 deg.API		Formation Depth 4342.00 ft	
Water 1.05 Sp.Gr.H2O			
Gas 1.05 Sp.Gr.AIR			
Acoustic Velocity 929.065 ft/s			
Formation Submergence		Pump Intake 139.0 psi (g)	
Total Gaseous Liquid Column HT (TVD) 378 ft		Producing BHP 145.9 psi (g)	
Equivalent Gas Free Liquid HT (TVD) 378 ft		Static BHP -*- psi (g)	
Acoustic Test			

Group: Belpre Well: Lunz 1-20 (acquired on: 08/13/19 13:45:27)

Acoustic Velocity	929.065 ft/s	Joints counted	39
Joints Per Second	14.8176 jts/sec	Joints to liquid level	125.95
Depth to liquid level	3948.53 ft	Filter Width	12.8148
Automatic Collar Count	Yea	Time to 1st Collar	0.332
			2.964

August 20, 2019

Loveness Mpanje
F. G. Holl Company L.L.C.
9431 E CENTRAL STE 100
WICHITA, KS 67206-2563

Re: Temporary Abandonment
API 15-047-20533-00-00
LUNZ 1-20
SE/4 Sec.20-24S-16W
Edwards County, Kansas

Dear Loveness Mpanje:

"Your temporary abandonment (TA) application for the well listed above has been approved. In accordance with K.A.R. 82-3-111 the TA status of this well will expire 08/20/2020.

- * If you return this well to service or plug it, please notify the District Office.
- * If you sell this well you are required to file a Transfer of Operator form, T-1.
- * If the well will remain temporarily abandoned, you must submit a new TA application, CP-111, before 08/20/2020.

You may contact me at the number above if you have questions.

Very truly yours,

Michael Maier"