

KANSAS CORPORATION COMMISSION  
OIL & GAS CONSERVATION DIVISION

Form must be Typed

Form must be signed

All blanks must be complete

## TEMPORARY ABANDONMENT WELL APPLICATION

OPERATOR: License# \_\_\_\_\_

Name: \_\_\_\_\_

Address 1: \_\_\_\_\_

Address 2: \_\_\_\_\_

City: \_\_\_\_\_ State: \_\_\_\_\_ Zip: \_\_\_\_\_ + \_\_\_\_\_

Contact Person: \_\_\_\_\_

Phone: ( \_\_\_\_\_ ) \_\_\_\_\_

Contact Person Email: \_\_\_\_\_

Field Contact Person: \_\_\_\_\_

Field Contact Person Phone: ( \_\_\_\_\_ ) \_\_\_\_\_

API No. 15- \_\_\_\_\_

Spot Description: \_\_\_\_\_

\_\_\_\_ - \_\_\_\_ - \_\_\_\_ - \_\_\_\_ Sec. \_\_\_\_\_ Twp. \_\_\_\_\_ S. R. \_\_\_\_\_ ☐ E ☐ W\_\_\_\_\_ feet from ☐ N / ☐ S Line of Section\_\_\_\_\_ feet from ☐ E / ☐ W Line of Section

GPS Location: Lat: \_\_\_\_\_, Long: \_\_\_\_\_

Datum: ☐ NAD27 ☐ NAD83 ☐ WGS84County: \_\_\_\_\_ Elevation: \_\_\_\_\_ ☐ GL ☐ KB

Lease Name: \_\_\_\_\_ Well #: \_\_\_\_\_

Well Type: (check one) ☐ Oil ☐ Gas ☐ OG ☐ WSW ☐ Other: \_\_\_\_\_☐ SWD Permit #: \_\_\_\_\_ ☐ ENHR Permit #: \_\_\_\_\_☐ Gas Storage Permit #: \_\_\_\_\_

Spud Date: \_\_\_\_\_ Date Shut-In: \_\_\_\_\_

	Conductor	Surface	Production	Intermediate	Liner	Tubing
Size						
Setting Depth						
Amount of Cement						
Top of Cement						
Bottom of Cement						

Casing Fluid Level from Surface: \_\_\_\_\_ How Determined? \_\_\_\_\_ Date: \_\_\_\_\_

Casing Squeeze(s): \_\_\_\_\_ to \_\_\_\_\_ w / \_\_\_\_\_ sacks of cement, \_\_\_\_\_ to \_\_\_\_\_ w / \_\_\_\_\_ sacks of cement. Date: \_\_\_\_\_

Do you have a valid Oil & Gas Lease? ☐ Yes ☐ NoDepth and Type: ☐ Junk in Hole at \_\_\_\_\_ ☐ Tools in Hole at \_\_\_\_\_ Casing Leaks: ☐ Yes ☐ No Depth of casing leak(s): \_\_\_\_\_Type Completion: ☐ ALT. I ☐ ALT. II Depth of: ☐ DV Tool: \_\_\_\_\_ w / \_\_\_\_\_ sacks of cement ☐ Port Collar: \_\_\_\_\_ w / \_\_\_\_\_ sack of cement

Packer Type: \_\_\_\_\_ Size: \_\_\_\_\_ Inch Set at: \_\_\_\_\_ Feet

Total Depth: \_\_\_\_\_ Plug Back Depth: \_\_\_\_\_ Plug Back Method: \_\_\_\_\_

**Geological Data:**

Formation Name	Formation Top	Formation Base	Completion Information
1. _____	At: _____ to _____ Feet	Perforation Interval _____ to _____ Feet or Open Hole Interval _____ to _____ Feet	
2. _____	At: _____ to _____ Feet	Perforation Interval _____ to _____ Feet or Open Hole Interval _____ to _____ Feet	

UNDER PENALTY OF PERJURY I HEREBY ATTEST THAT THE INFORMATION CONTAINED HEREIN IS TRUE AND CORRECT TO THE BEST OF MY KNOWLEDGE

Submitted Electronically

**Do NOT Write in This  
Space - KCC USE ONLY**

Date Tested: \_\_\_\_\_ Results: \_\_\_\_\_ Date Plugged: \_\_\_\_\_ Date Repaired: \_\_\_\_\_ Date Put Back in Service: \_\_\_\_\_

Review Completed by: \_\_\_\_\_ Comments: \_\_\_\_\_

TA Approved: ☐ Yes ☐ Denied Date: \_\_\_\_\_

## Mail to the Appropriate KCC Conservation Office:

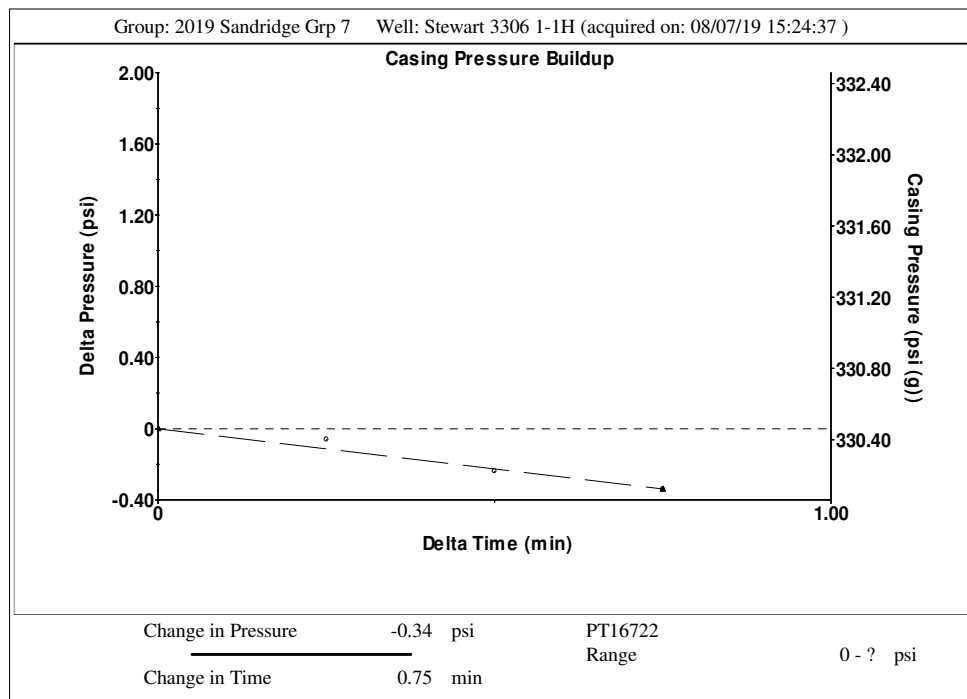
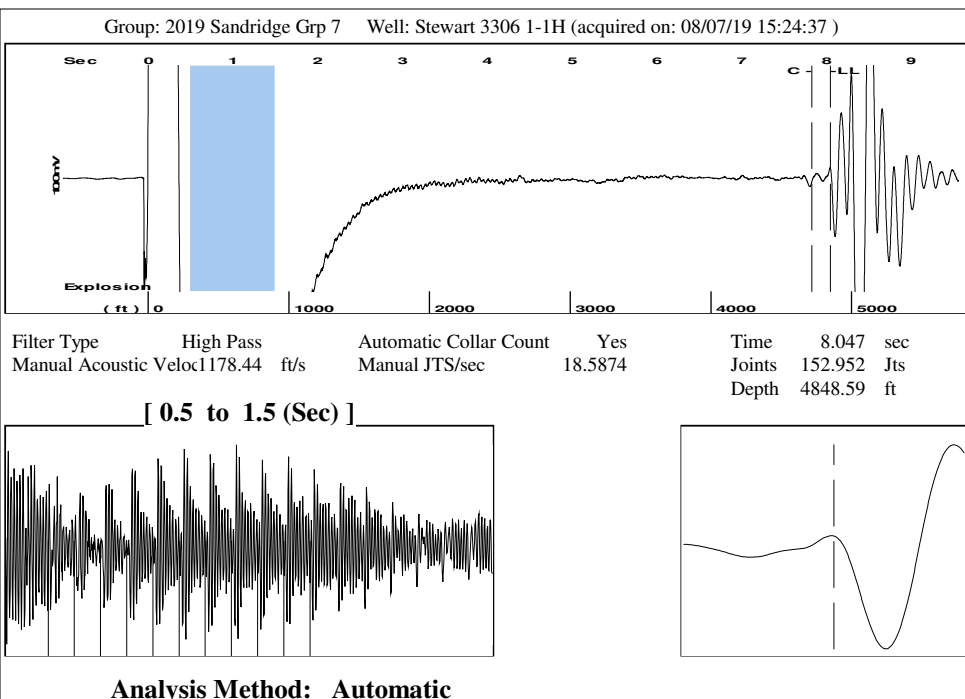
	KCC District Office #1 - 210 E. Frontview, Suite A, Dodge City, KS 67801	Phone 620.682.7933
	KCC District Office #2 - 3450 N. Rock Road, Building 600, Suite 601, Wichita, KS 67226	Phone 316.337.7400
	KCC District Office #3 - 137 E. 21st St., Chanute, KS 66720	Phone 620.902.6450
	KCC District Office #4 - 2301 E. 13th Street, Hays, KS 67601-2651	Phone 785.261.6250

General		
Well ID	126915	
Well	Stewart 3306 1-1H	
Company	Sandridge	
Operator	- * -	
Lease Name	Stewart 3306 1-1H	
Elevation	1328.00	ft
Production Method	Other	
Dataset Description		
Comment		

Surface Unit		
Manufacturer	- * -	
Unit Class	Conventional	
Unit API Number	- * -	
Measured Stroke Length	- * -	in
Rotation	CW	
Counter Balance Effect (Weights Level)	- * -	Klb
Weight Of Counter Weights	2000	lb
Prime Mover		
Motor Type	Electric	
Rated HP	- * -	HP
Run Time	24	hr/day
MFG/Comment	- * -	
Electric Motor Parameters		
Rated Full Load AMPS	- * -	
Rated Full Load RPM	- * -	
Synchronous RPM	1200	
Voltage	- * -	
Hertz	60	
Phase	3	
Power Consumption	5	
Power Demand	8	\$/KW

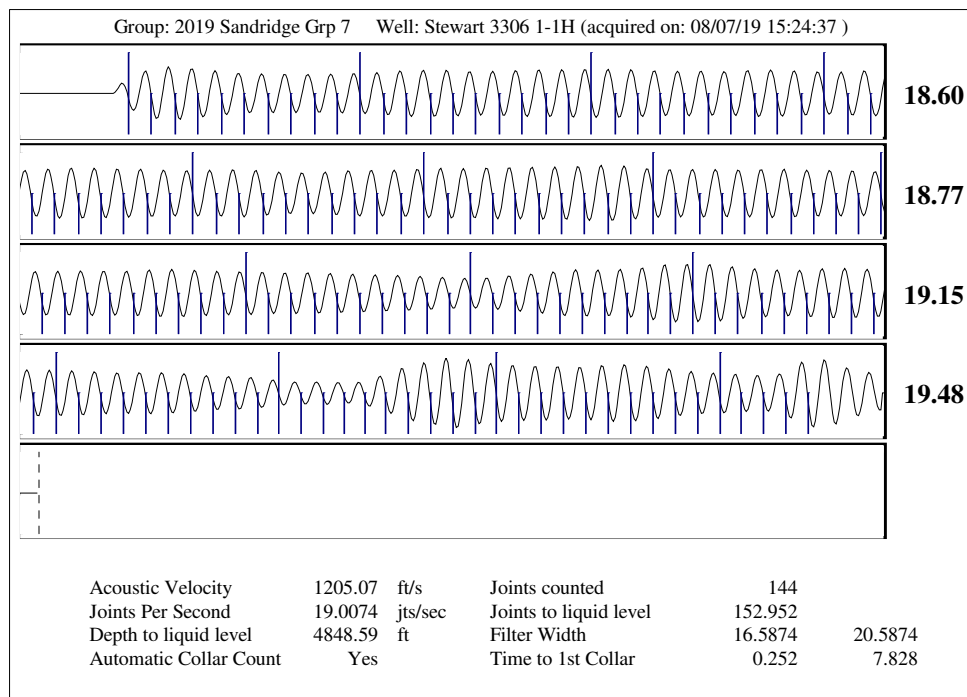
Tubulars			Pump			
Tubing OD	2.875	in	Plunger Diameter	- * -	in	
Casing OD	7.000	in	Pump Intake Depth	- * -	ft	
Average Joint Length	31.700	ft	**Total Rod Length > Pump Depth			
Anchor Depth	- * -	ft				
Kelly Bushing	21.00	ft				
Rod String			Polished Rod			
			Polished Rod Diameter	- * -	in	
	Top Taper	Taper 2	Taper 3	Taper 4	Taper 5	Taper 6
Rod Type	- * -	- * -	- * -	- * -	- * -	- * -
Rod Length	- * -	- * -	- * -	- * -	- * -	- * - ft
Rod Diameter	- * -	- * -	- * -	- * -	- * -	- * - in
Rod Weight	0.0	0.0	0.0	0.0	0.0	0.0 lb
Total Rod Length	0					
Total Rod Weight	0.00					
Damp Up	0.05					
Damp Down	0.05					

Conditions			
Pressure		Production	
Static BHP	551.9 psi (g)	Oil Production	0 BBL/D
Static BHP Method	Acoustic	Water Production	1 BBL/D
Static BHP Date	08/07/2019	Gas Production	- * - Mscf/D
		Production Date	07/23/2018
Producing BHP	- * - psi (g)	Temperatures	
Producing BHP Method	- * -	Surface Temperature	70 deg F
Producing BHP Date	- * -	Bottomhole Temperature	150 deg F
Formation Depth	5251.00 ft		
Surface Producing Pressures		Fluid Properties	
Tubing Pressure	2.6 psi (g)	Oil API	40 deg.API
Casing Pressure	330.5 psi (g)	Water Specific Gravity	1.05 Sp.Gr.H2O
Casing Pressure Buildup			
Change in Pressure	-0.340 psi		
Over Change in Time	0.75 min		



Group: 2019 Sandridge Grp 7 Well: Stewart 3306 1-1H (acquired on: 08/07/19 15:24:37 )

Production	Potential	Casing Pressure	Static
Current		330.5 psi (g)	
Oil 0	- * - BBL/D	Casing Pressure Buildup	Oil Column Height
Water 1	- * - BBL/D	-0.340 psi	MD 0 ft
Gas - * -	- * - Mscf/D	0.75 min	
IPR Method	Vogel	Gas/Liquid Interface Pressure	Water Column Height
PBHP/SBHP	- * -	378.5 psi (g)	MD 381 ft
Production Efficiency	0.0	Liquid Level Depth	
		4848.59 ft	
Oil 40 deg.API		Tubing Intake Depth	
Water 1.05 Sp.Gr.H2O		- * - ft	
Gas 0.75 Sp.Gr.AIR		Formation Depth	
Acoustic Velocity	1205.07 ft/s	5251.00 ft	
Stewart 3306 1-1H			



August 21, 2019

Laci Bevans  
SandRidge Exploration and Production LLC  
123 ROBERT S. KERR AVE  
OKLAHOMA CITY, OK 73102-6406

Re: Temporary Abandonment  
API 15-077-22038-01-00  
STEWART 3306 1-1H  
SE/4 Sec.01-33S-06W  
Harper County, Kansas

Dear Laci Bevans:

"Your temporary abandonment (TA) application for the well listed above has been approved. In accordance with K.A.R. 82-3-111 the TA status of this well will expire 08/21/2020.

- \* If you return this well to service or plug it, please notify the District Office.
- \* If you sell this well you are required to file a Transfer of Operator form, T-1.
- \* If the well will remain temporarily abandoned, you must submit a new TA application, CP-111, before 08/21/2020.

You may contact me at the number above if you have questions.

Very truly yours,

Steve VanGieson"