

KANSAS CORPORATION COMMISSION
OIL & GAS CONSERVATION DIVISION

TEMPORARY ABANDONMENT WELL APPLICATION

OPERATOR: License#
Name:
Address 1:
Address 2:
City: State: Zip:
Contact Person:
Phone:
Contact Person Email:
Field Contact Person:
Field Contact Person Phone:

API No. 15-
Spot Description:
Sec. Twp. S. R.
GPS Location: Lat: Long:
Datum: NAD27 NAD83 WGS84
County: Elevation:
Lease Name: Well #:
Well Type: Oil Gas OG WSW Other:
SWD Permit #: ENHR Permit #:
Gas Storage Permit #:
Spud Date: Date Shut-In:

Table with 7 columns: Conductor, Surface, Production, Intermediate, Liner, Tubing. Rows include Size, Setting Depth, Amount of Cement, Top of Cement, Bottom of Cement.

Casing Fluid Level from Surface: How Determined? Date:
Casing Squeeze(s): to w / sacks of cement, to w / sacks of cement. Date:
Do you have a valid Oil & Gas Lease? Yes No
Depth and Type: Junk in Hole at Tools in Hole at Casing Leaks: Yes No Depth of casing leak(s):
Type Completion: ALT. I ALT. II Depth of: DV Tool: w / sacks of cement Port Collar: w / sack of cement
Packer Type: Size: Inch Set at: Feet
Total Depth: Plug Back Depth: Plug Back Method:

Geological Data:

Table with 4 columns: Formation Name, Formation Top, Formation Base, Completion Information. Rows 1 and 2.

UNDER PENALTY OF PERJURY I HEREBY ATTEST THAT THE INFORMATION CONTAINED HEREIN IS TRUE AND CORRECT TO THE BEST OF MY KNOWLEDGE

Submitted Electronically

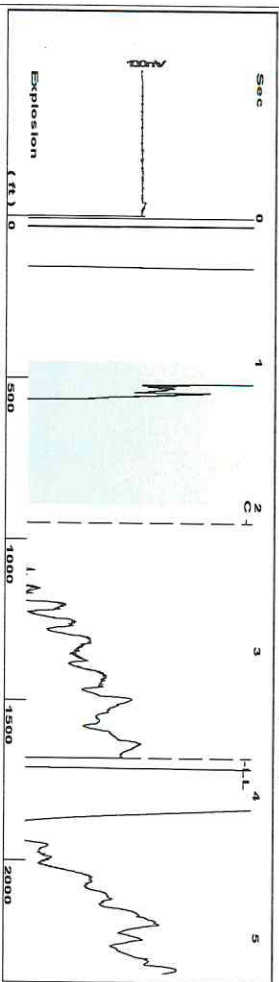
Do NOT Write in This Space - KCC USE ONLY
Date Tested: Results: Date Plugged: Date Repaired: Date Put Back in Service:
Review Completed by: Comments:
TA Approved: Yes Denied Date:

Mail to the Appropriate KCC Conservation Office:

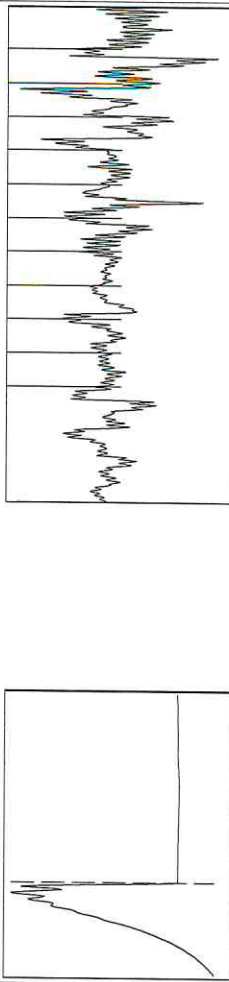
Table with 3 columns: District Office #, Address, Phone. Rows 1-4.



Group: MyWells Well: Blackwell 5 (acquired on: 05/14/19 16:17:43)



Filter Type: High Pass
 Manual Acoustic Velocity: 258 ft/s
 Automatic Collar Count: Yes
 Manual JTS/sec: 14.6413
 Time: 3.756 sec
 Joints: 53.0081 Jts
 Depth: 1680.36 ft

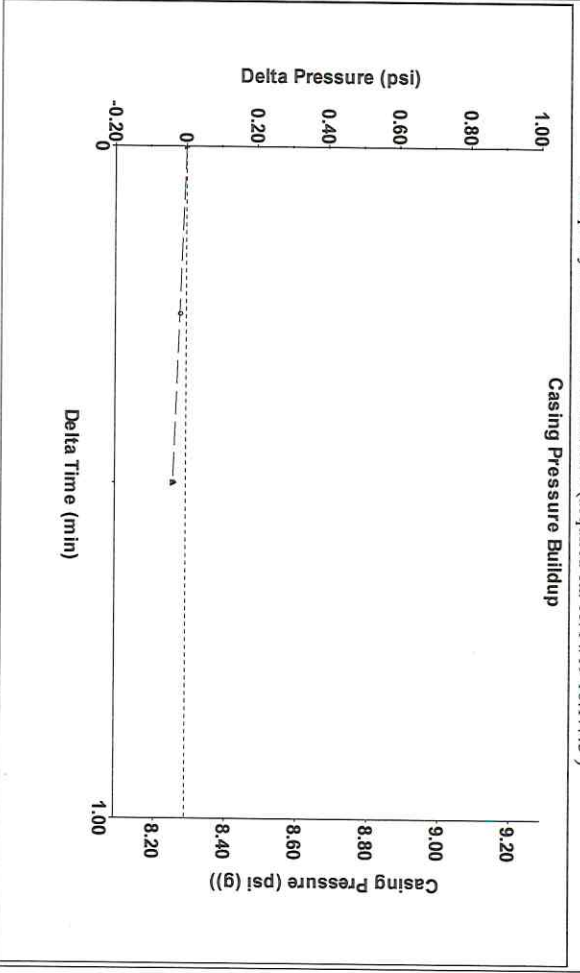


Group: MyWells Well: Blackwell 5 (acquired on: 05/14/19 16:17:43)

Production Current	Potential	Casing Pressure	Static
Oil - *-	- *- BBL/D	8.3 psi (g)	Oil Column Height MD 0 ft
Water - *-	- *- BBL/D	-0.036 psi	Water Column Height MD - *- ft
Gas - *-	- *- Mscf/D	0.50 min	
IPR Method PBHP/SBHP	Vogel - *-	Gas/Liquid Interface Pressure 9.8 psi (g)	
Production Efficiency	0.0		
Oil 40 deg API		Liquid Level Depth 1680.36 ft	
Water 1.05 Sp.Gr:H2O		Pump Intake Depth - *- ft	
Gas 1.07 Sp.Gr:AIR		Formation Depth 4320.00 ft	
Acoustic Velocity	894.758 ft/s		Static BHP 1205.3 psi (g)

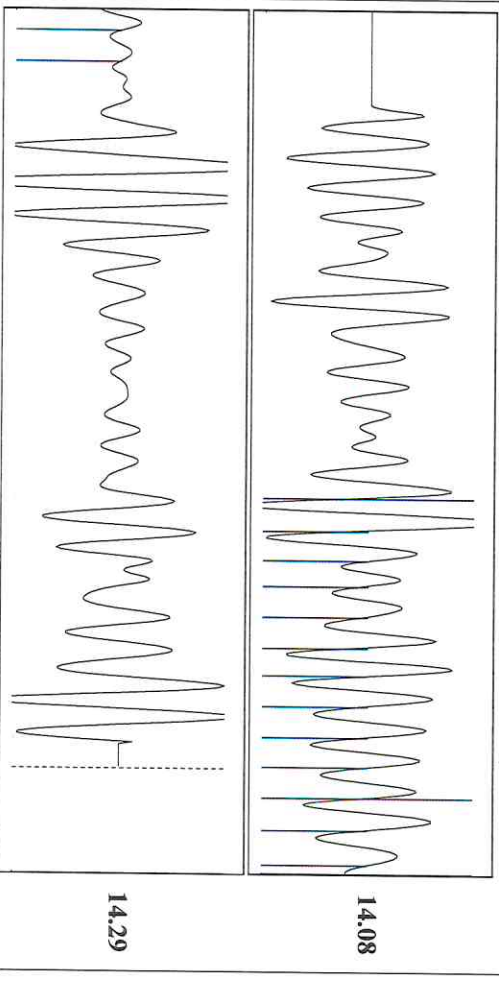


Group: MyWells Well: Blackwell 5 (acquired on: 05/14/19 16:17:43)



Change in Pressure: -0.04 psi
 Change in Time: 0.50 min
 PT4212 Range
 0 - ? psi

Group: MyWells Well: Blackwell 5 (acquired on: 05/14/19 16:17:43)



Acoustic Velocity	894.758 ft/s	Joints counted	14
Joints Per Second	14.1129 Jts/sec	Joints to liquid level	53.0081
Depth to liquid level	1680.36 ft	Filter Width	12.6413
Automatic Collar Count	Yes	Time to 1st Collar	1.128

August 21, 2019

Shayne Hayes
Hayes Oil & Gas LLC
1081 W HWY 160
PO BOX 108
ATTICA, KS 67009-0108

Re: Temporary Abandonment
API 15-077-20751-00-00
BLACKWELL 5
NE/4 Sec.05-31S-08W
Harper County, Kansas

Dear Shayne Hayes:

"Your temporary abandonment (TA) application for the well listed above has been approved. In accordance with K.A.R. 82-3-111 the TA status of this well will expire 08/21/2020.

- * If you return this well to service or plug it, please notify the District Office.
- * If you sell this well you are required to file a Transfer of Operator form, T-1.
- * If the well will remain temporarily abandoned, you must submit a new TA application, CP-111, before 08/21/2020.

You may contact me at the number above if you have questions.

Very truly yours,

Steve VanGieson"