

KANSAS CORPORATION COMMISSION
OIL & GAS CONSERVATION DIVISION

Form must be Typed

Form must be signed

All blanks must be complete

TEMPORARY ABANDONMENT WELL APPLICATION

OPERATOR: License# _____

Name: _____

Address 1: _____

Address 2: _____

City: _____ State: _____ Zip: _____ + _____

Contact Person: _____

Phone: (_____) _____

Contact Person Email: _____

Field Contact Person: _____

Field Contact Person Phone: (_____) _____

API No. 15- _____

Spot Description: _____

____ - ____ - ____ - ____ Sec. _____ Twp. _____ S. R. _____ ☐ E ☐ W_____ feet from ☐ N / ☐ S Line of Section_____ feet from ☐ E / ☐ W Line of Section

GPS Location: Lat: _____, Long: _____

(e.g. xx.xxxxx) (e.g. -xxx.xxxxx)

Datum: ☐ NAD27 ☐ NAD83 ☐ WGS84County: _____ Elevation: _____ ☐ GL ☐ KB

Lease Name: _____ Well #: _____

Well Type: (check one) ☐ Oil ☐ Gas ☐ OG ☐ WSW ☐ Other: _____☐ SWD Permit #: _____ ☐ ENHR Permit #: _____☐ Gas Storage Permit #: _____

Spud Date: _____ Date Shut-In: _____

	Conductor	Surface	Production	Intermediate	Liner	Tubing
Size						
Setting Depth						
Amount of Cement						
Top of Cement						
Bottom of Cement						

Casing Fluid Level from Surface: _____ How Determined? _____ Date: _____

Casing Squeeze(s): _____ to _____ w / _____ sacks of cement, _____ to _____ w / _____ sacks of cement. Date: _____
(top) (bottom) (top) (bottom)Do you have a valid Oil & Gas Lease? ☐ Yes ☐ NoDepth and Type: ☐ Junk in Hole at _____ ☐ Tools in Hole at _____ Casing Leaks: ☐ Yes ☐ No Depth of casing leak(s): _____
(depth) (depth)Type Completion: ☐ ALT. I ☐ ALT. II Depth of: ☐ DV Tool: _____ w / _____ sacks of cement ☐ Port Collar: _____ w / _____ sack of cement
(depth) (depth)

Packer Type: _____ Size: _____ Inch Set at: _____ Feet

Total Depth: _____ Plug Back Depth: _____ Plug Back Method: _____

Geological Data:**Formation Name**

Formation Top Formation Base

Completion Information

1. _____ At: _____ to _____ Feet Perforation Interval _____ to _____ Feet or Open Hole Interval _____ to _____ Feet

2. _____ At: _____ to _____ Feet Perforation Interval _____ to _____ Feet or Open Hole Interval _____ to _____ Feet

UNDER PENALTY OF PERJURY I HEREBY ATTEST THAT THE INFORMATION CONTAINED HEREIN IS TRUE AND CORRECT TO THE BEST OF MY KNOWLEDGE

Submitted Electronically

**Do NOT Write in This
Space - KCC USE ONLY**

Date Tested: _____ Results: _____ Date Plugged: _____ Date Repaired: _____ Date Put Back in Service: _____

Review Completed by: _____ Comments: _____

TA Approved: ☐ Yes ☐ Denied Date: _____**Mail to the Appropriate KCC Conservation Office:**

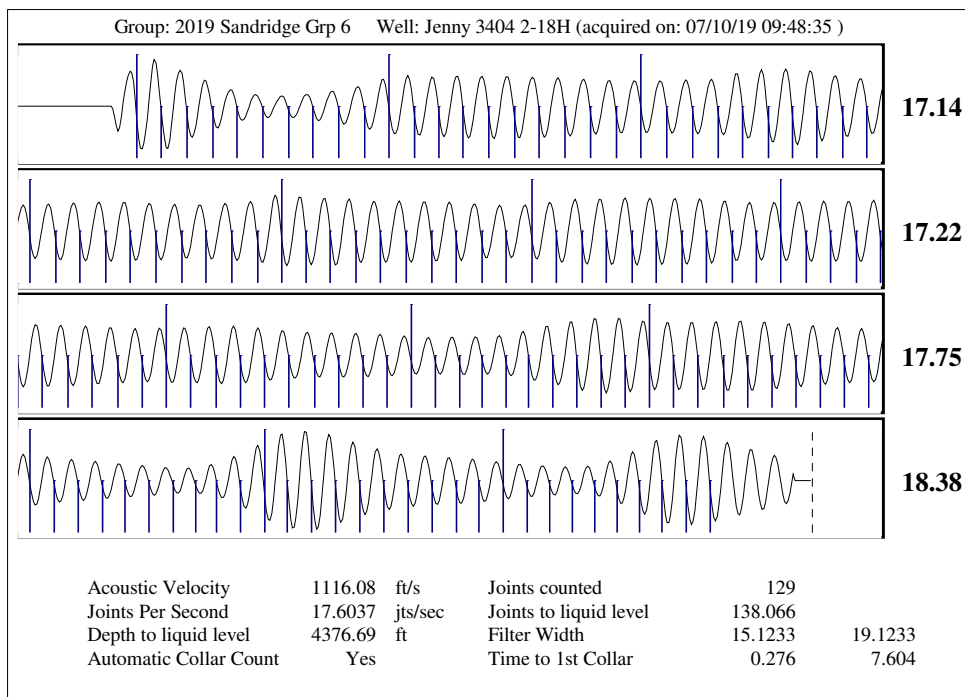
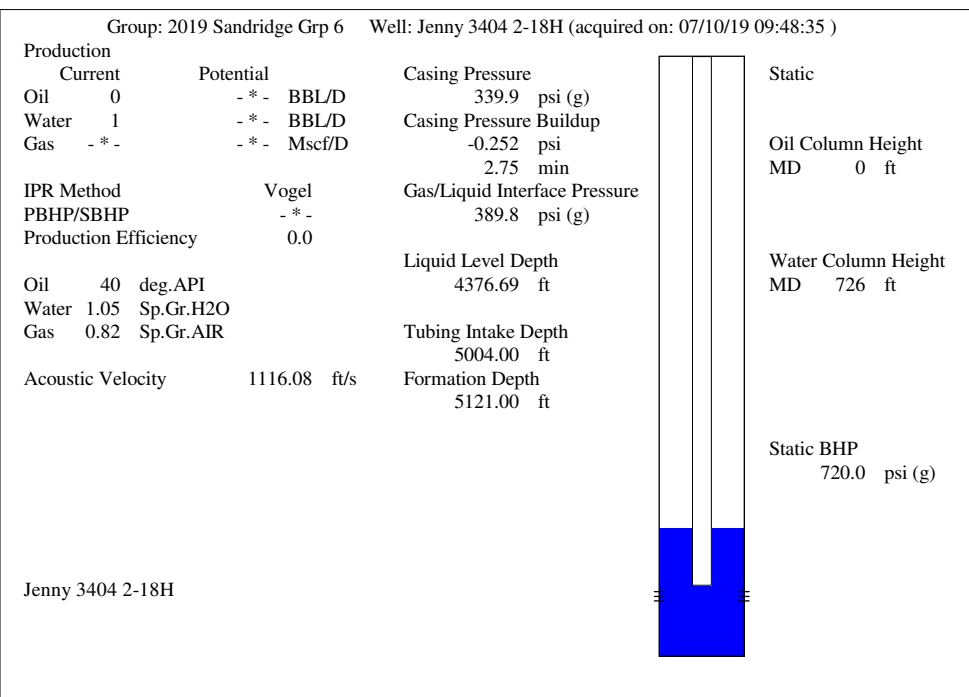
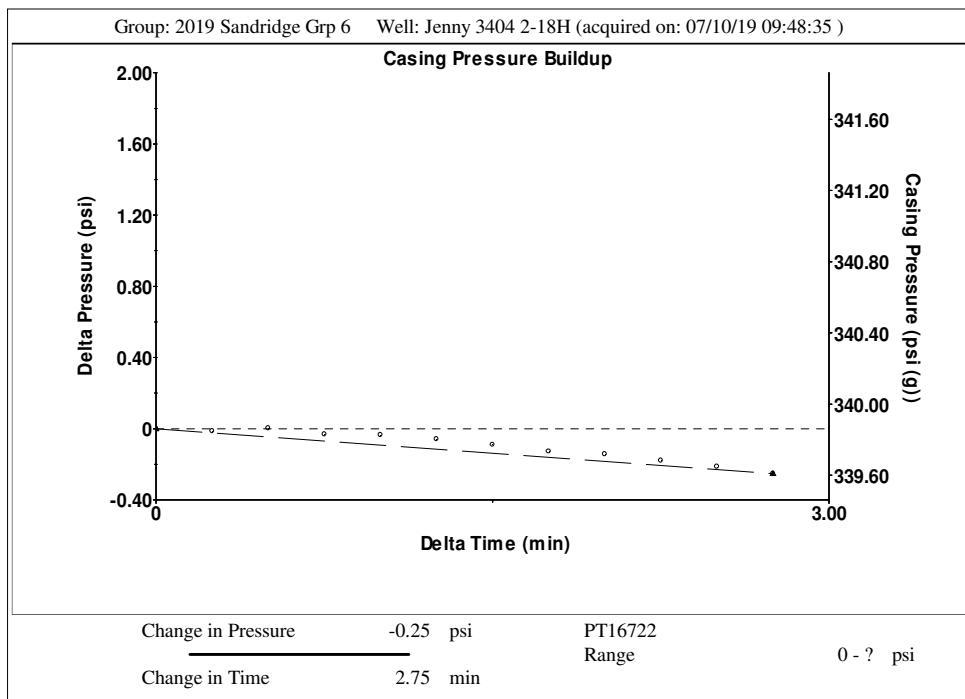
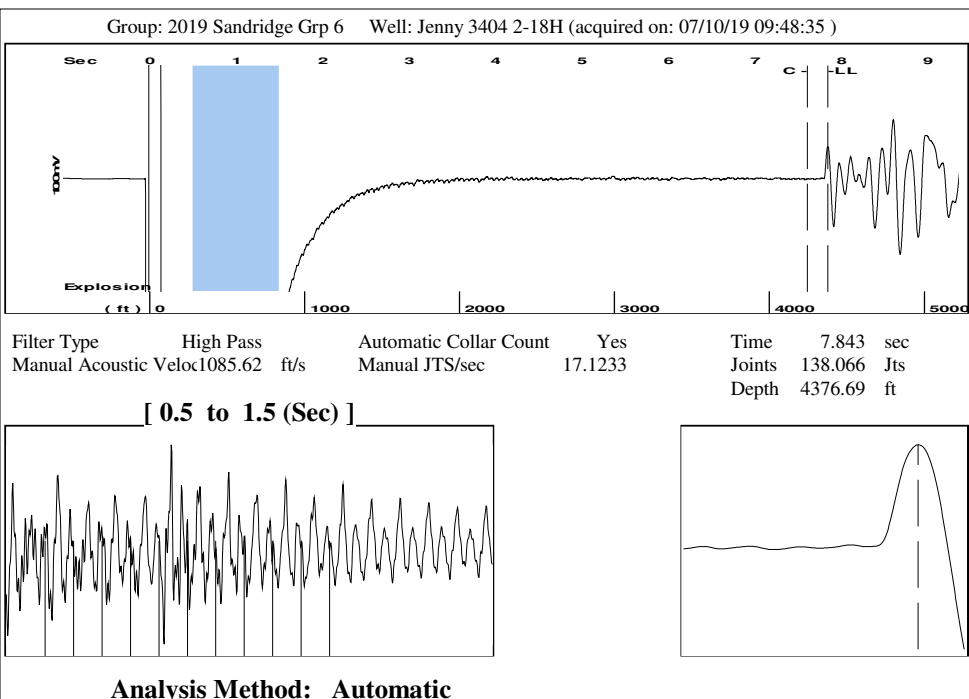
	KCC District Office #1 - 210 E. Frontview, Suite A, Dodge City, KS 67801	Phone 620.682.7933
	KCC District Office #2 - 3450 N. Rock Road, Building 600, Suite 601, Wichita, KS 67226	Phone 316.337.7400
	KCC District Office #3 - 137 E. 21st St., Chanute, KS 66720	Phone 620.902.6450
	KCC District Office #4 - 2301 E. 13th Street, Hays, KS 67601-2651	Phone 785.261.6250

General		
Well ID	126811	
Well	Jenny 3404 2-18H	
Company	Sandridge	
Operator	- * -	
Lease Name	Jenny 3404 2-18H	
Elevation	1249.00	ft
Production Method	Other	
Dataset Description		
Comment		

Surface Unit		
Manufacturer	- * -	
Unit Class	Conventional	
Unit API Number	- * -	
Measured Stroke Length	- * -	in
Rotation	CW	
Counter Balance Effect (Weights Level)	- * -	Klb
Weight Of Counter Weights	2000	lb
Prime Mover		
Motor Type	Electric	
Rated HP	- * -	HP
Run Time	24	hr/day
MFG/Comment	- * -	
Electric Motor Parameters		
Rated Full Load AMPS	- * -	
Rated Full Load RPM	- * -	
Synchronous RPM	1200	
Voltage	- * -	
Hertz	60	
Phase	3	
Power Consumption	5	
Power Demand	8	\$/KW

Tubulars			Pump			
Tubing OD	2.875	in	Plunger Diameter	- * -	in	
Casing OD	7.000	in	Pump Intake Depth	5004.00	ft	
Average Joint Length	31.700	ft	**Total Rod Length < Pump Depth			
Anchor Depth	- * -	ft				
Kelly Bushing	18.00	ft	Polished Rod			
			Polished Rod Diameter	- * -	in	
Rod String						
	Top Taper	Taper 2	Taper 3	Taper 4	Taper 5	Taper 6
Rod Type	- * -	- * -	- * -	- * -	- * -	- * -
Rod Length	- * -	- * -	- * -	- * -	- * -	- * - ft
Rod Diameter	- * -	- * -	- * -	- * -	- * -	- * - in
Rod Weight	0.0	0.0	0.0	0.0	0.0	0.0 lb
Total Rod Length	0					
Total Rod Weight	0.00					
Damp Up	0.05					
Damp Down	0.05					

Conditions		
Pressure		
Static BHP	720.0	psi (g)
Static BHP Method	Acoustic	
Static BHP Date	07/10/2019	
Producing BHP	- * -	psi (g)
Producing BHP Method	- * -	
Producing BHP Date	- * -	
Formation Depth	5121.00	ft
Surface Producing Pressures		
Tubing Pressure	190.0	psi (g)
Casing Pressure	339.9	psi (g)
Casing Pressure Buildup		
Change in Pressure	-0.252	psi
Over Change in Time	2.75	min
Production		
Oil Production	0	BBL/D
Water Production	1	BBL/D
Gas Production	- * -	Mscf/D
Production Date	03/26/2017	
Temperatures		
Surface Temperature	70	deg F
Bottomhole Temperature	150	deg F
Fluid Properties		
Oil API	40	deg.API
Water Specific Gravity	1.05	Sp.Gr.H2O



August 21, 2019

Laci Bevans
SandRidge Exploration and Production LLC
123 ROBERT S. KERR AVE
OKLAHOMA CITY, OK 73102-6406

Re: Temporary Abandonment
API 15-191-22740-01-00
JENNY 3404 2-18H
NW/4 Sec.07-34S-04W
Sumner County, Kansas

Dear Laci Bevans:

"Your temporary abandonment (TA) application for the well listed above has been approved. In accordance with K.A.R. 82-3-111 the TA status of this well will expire 08/21/2020.

- * If you return this well to service or plug it, please notify the District Office.
- * If you sell this well you are required to file a Transfer of Operator form, T-1.
- * If the well will remain temporarily abandoned, you must submit a new TA application, CP-111, before 08/21/2020.

You may contact me at the number above if you have questions.

Very truly yours,

Steve VanGieson"