



**TRILOBITE  
TESTING, INC.**

# DRILL STEM TEST REPORT

Samuel Gary Jr. & Associates, Inc.

**S17-5S-23W Norton, KS**

1515 Wynkoop STE 700  
Denver CO 80202

**Schuckman #1-17**

ATTN: Jim C. Musgrove

Job Ticket: 63206

**DST#: 3**

Test Start: 2017.04.26 @ 17:01:00

## GENERAL INFORMATION:

Formation: **LKC "H-J"**

Deviated: No Whipstock: ft (KB)

Time Tool Opened: 19:01:45

Time Test Ended: 01:56:45

Test Type: Conventional Bottom Hole (Reset)

Tester: Spencer J. Staab

Unit No: 84

**Interval: 3468.00 ft (KB) To 3525.00 ft (KB) (TVD)**

Reference Elevations: 2203.00 ft (KB)

Total Depth: 3525.00 ft (KB) (TVD)

2195.00 ft (CF)

Hole Diameter: 7.88 inches Hole Condition: Fair

KB to GR/CF: 8.00 ft

**Serial #: 8934**

**Inside**

Press@RunDepth: 125.36 psig @ 3473.00 ft (KB)

Capacity: 8000.00 psig

Start Date: 2017.04.26

End Date:

2017.04.27

Last Calib.:

2017.04.27

Start Time: 17:01:15

End Time:

01:56:45

Time On Btm:

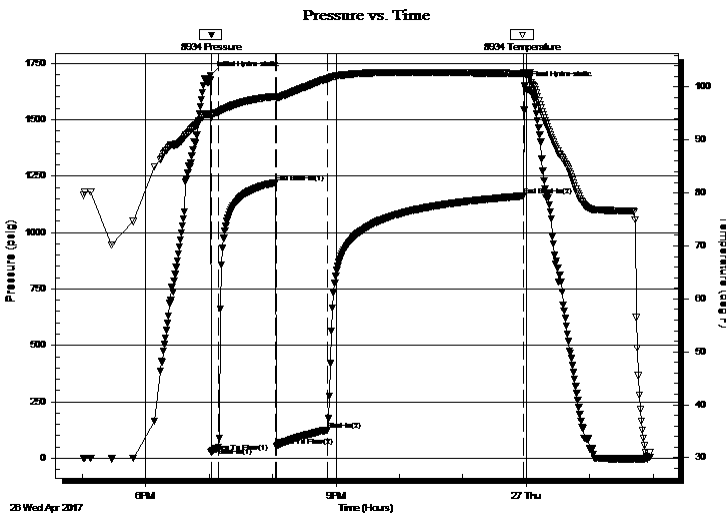
2017.04.26 @ 19:01:30

Time Off Btm:

2017.04.26 @ 23:58:00

**TEST COMMENT:** 5-IF-Fair Blow ; Built from 1/2" to 4&1/4"  
60-ISI-No Blow Back  
45-FF-Fair Blow ; Built from a surface to 8"  
180-FSI-No Blow Back

## PRESSURE SUMMARY



Time (Min.)	Pressure (psig)	Temp (deg F)	Annotation
0	1694.01	95.00	Initial Hydro-static
1	25.86	94.23	Open To Flow (1)
8	48.63	95.29	Shut-In(1)
62	1221.41	98.25	End Shut-In(1)
62	53.75	97.91	Open To Flow (2)
111	125.36	101.55	Shut-In(2)
296	1161.85	102.57	End Shut-In(2)
297	1651.27	102.63	Final Hydro-static

## Recovery

Length (ft)	Description	Volume (bbl)
70.00	OWCM 10%O 20%W 70%M	0.51
65.00	OWCM 1% O 39%W 60%M	0.48
70.00	OCM 7%O 93% M	0.51
45.00	Clean Oil 100% O	0.33

## Gas Rates

	Choke (inches)	Pressure (psig)	Gas Rate (Mcf/d)

\* Recovery from multiple tests







**TRILOBITE  
TESTING, INC.**

# DRILL STEM TEST REPORT

**FLUID SUMMARY**

Samuel Gary Jr. & Associates, Inc.

**S17-5S-23W Norton,KS**

1515 Wynkoop STE 700  
Denver CO 80202

**Schuckman #1-17**

Job Ticket: 63206

**DST#: 3**

ATTN: Jim C. Musgrove

Test Start: 2017.04.26 @ 17:01:00

## Mud and Cushion Information

Mud Type: Gel Chem

Cushion Type:

Oil API:

19 deg API

Mud Weight: 9.00 lb/gal

Cushion Length:

ft

Water Salinity:

59000 ppm

Viscosity: 46.00 sec/qt

Cushion Volume:

bbbl

Water Loss: 7.60 in<sup>3</sup>

Gas Cushion Type:

Resistivity: ohm.m

Gas Cushion Pressure:

psig

Salinity: 1000.00 ppm

Filter Cake: inches

## Recovery Information

Recovery Table

Length ft	Description	Volume bbbl
70.00	OWCM 10%O 20%W 70%M	0.514
65.00	OWCM 1% O 39%W 60%M	0.478
70.00	OCM 7%O 93% M	0.514
45.00	Clean Oil 100% O	0.331

Total Length: 250.00 ft      Total Volume: 1.837 bbl

Num Fluid Samples: 0

Num Gas Bombs: 0

Serial #:

Laboratory Name:

Laboratory Location:

Recovery Comments: 2&1/2# LCM; Gravity= 19 degrees @ 30 degrees

RW=.306 @ 30 degrees

750 ML Gas; 1625 ML Oil 125 ML Mud; 2500 Total ML

760 PSI

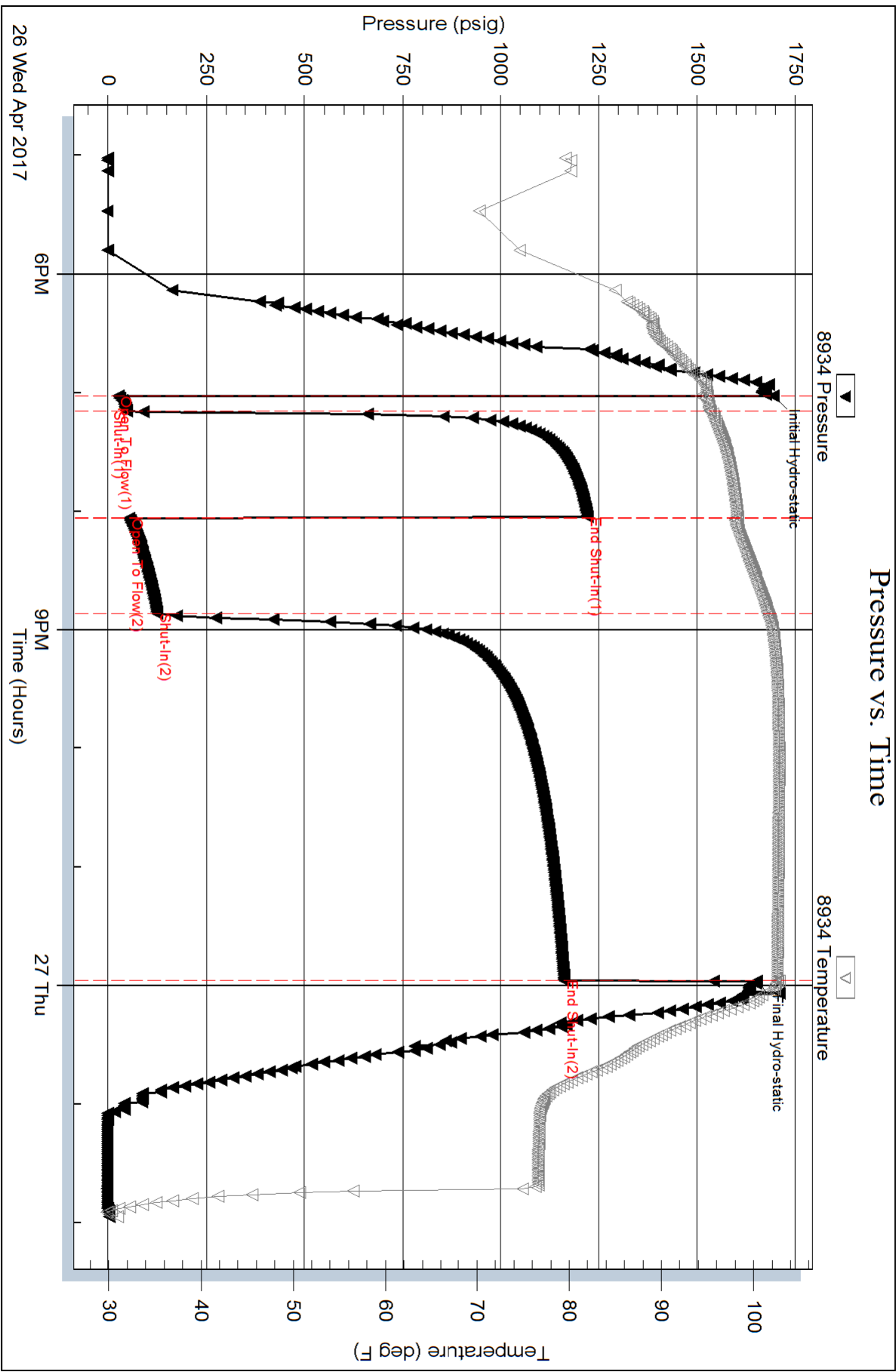
Serial #: 8934

Inside

Samuel Gary Jr. & Associates, Inc.

Schuckman #1-17

DST Test Number: 3



Triobite Testing, Inc

Ref. No: 63206

Printed: 2017.04.27 @ 07:21:30

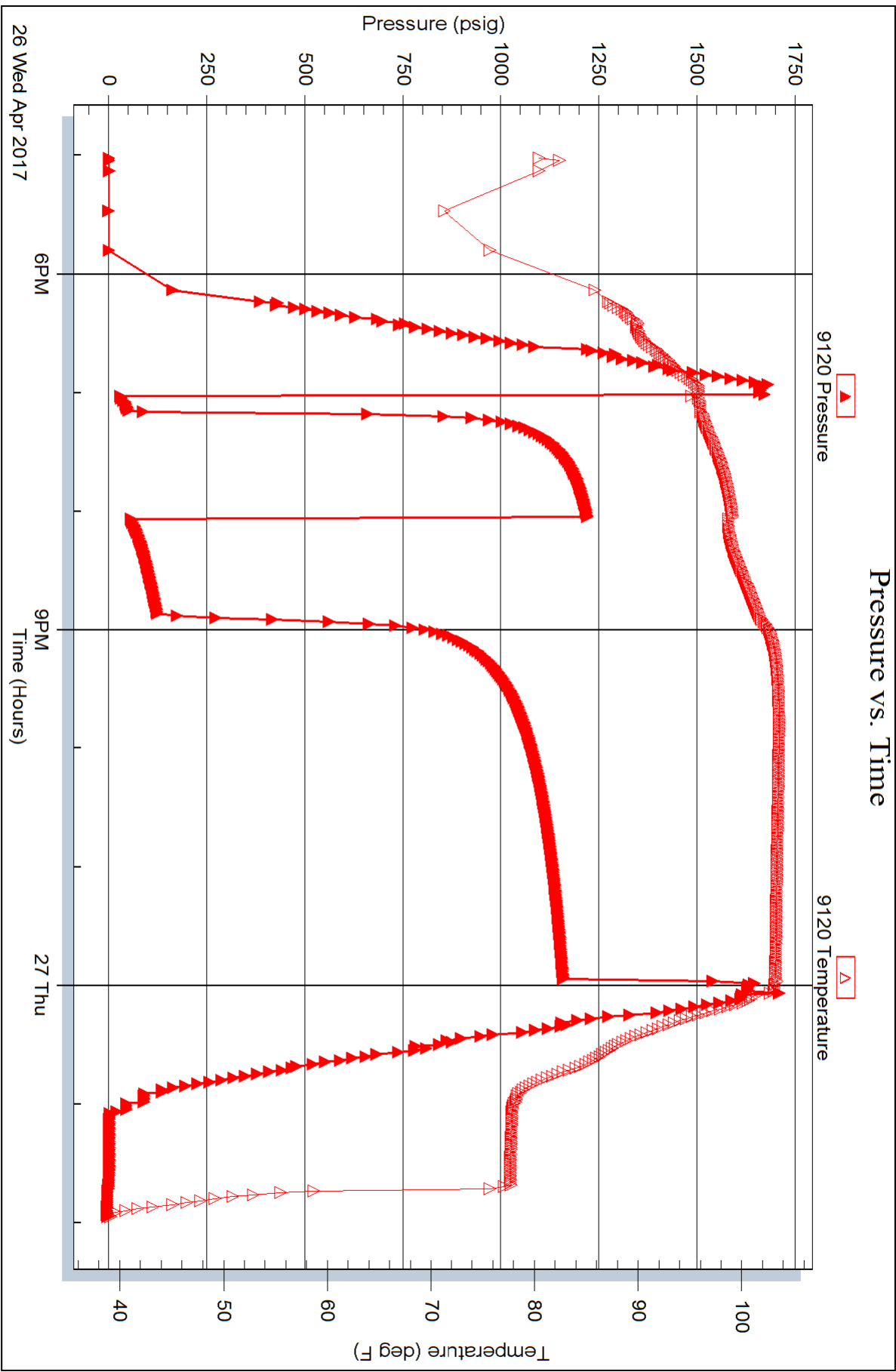
Serial #: 9120

Inside

Samuel Gary Jr. & Associates, Inc.

Schuckman #1-17

DST Test Number: 3



Serial #: 8368

Fluid

Samuel Gary Jr. & Associates, Inc.

Schuckman #1-17

DST Test Number: 3

