



Home
(785) 798-2400

Andrew Stenzel Geologist

Ness City, Kansas



Cell
(785) 798-5977

Scale 1:240 (5"=100') Imperial Measured Depth Log

Well Name: **Peddie-Hoovler #1**
API: **15-135-26074-00-00**
Location: **NE-SE-SW-NW Sec. 8-18S-24W (Ness County)**
License Number: **34996** Region: **KANSAS**
Spud Date: **7/11/19** Drilling Completed: **7/19/19**
Surface Coordinates: **2014' FNL & 1168' FWL**

Bottom Hole
Coordinates:
Ground Elevation (ft): **2328** K.B. Elevation (ft): **2335**
Logged Interval (ft): **3300** To: **TD** Total Depth (ft): **4420**
Formation: **MISSISSIPPI**
Type of Drilling Fluid: **Mud-Co Chemical**

Printed by MudLog from WellSight Systems 1-800-447-1534 www.WellSight.com

OPERATOR

Company: **Stewart Producers, Inc.**
Address: **301 N 27th St.**
PO Box 546
Mt. Vernon, IL 62864

GEOLOGIST

Name: **Andrew Stenzel**
Company: **Petroleum Geologist**
Address: **501 S. Franklin**
Ness City, KS 67560

Drilling Report

DAILY DRILLING REPORT:

7/11/19 **MIRU, set surface casing**
7/12/19 **Wait on cement**
7/13/19 **Drilling @ 1408'**
7/14/19 **Drilling @ 2803'**
7/15/19 **Drilling @ 3374'**
7/16/19 **Drilling @ 3930'**
7/17/19 **Drilling @ 4234'**
7/18/19 **DST #1, Circulating @ 4370'**
7/19/19 **Ran electric logs, DST #2, plugged and abandoned**

Services

RIG: Pickrell Drilling, Rig #10

MUD: MUDCO

LOGS: ELI Wireline: CNDL, PE, DIL, ML

Casing Record

SURFACE Casing: Ran 5 jts new 8 5/8", set at 253'

PRODUCTION Casing: None

Formation Tops

Sample Tops		Log Tops	
Anhy.	1615 (+720)	Anhy.	1624 (+711)
Base Anhy.	1653 (+704)	Base Anhy.	1655 (+680)
Topeka	3405 (-1070)	Topeka	3406 (-1071)
Heebner	3691 (-1356)	Heebner	3692 (-1357)
Lansing	3734 (-1399)	Lansing	3735 (-1400)
Stark Sh	4014 (-1679)	Stark Sh	4013 (-1678)
BKC	4069 (-1734)	BKC	4068 (-1733)
Pawnee	4161 (-1826)	Pawnee	4160 (-1825)
Ft. Scott	4335 (-1900)	Ft. Scott	4237 (-1902)
Cher. Sh.	4258 (-1923)	Cher. Sh.	4262 (-1927)
Miss.	4348 (-2013)	Miss.	4342 (-2007)
RTD	4420 (-2085)	LTD	4422 (-2087)



TRILOBITE TESTING, INC.

DRILL STEM TEST REPORT

Stewart Producers Inc
 PO Box 546
 MT Vernon IL 62864+0546
 ATTN: Andrew Stenzel

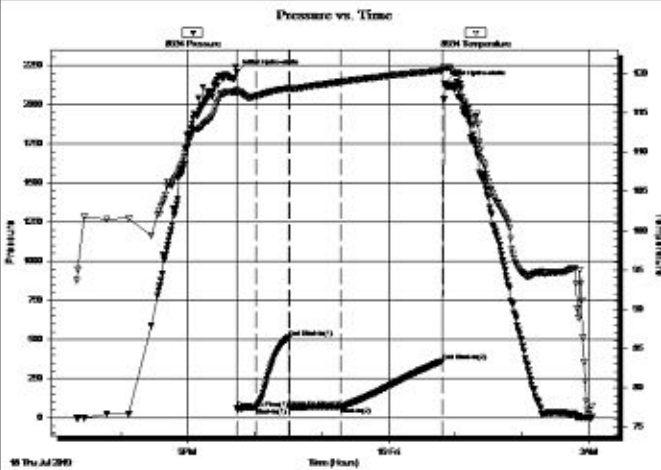
8-18s-24w Ness, KS
Peddie-Hoovler #1
 Job Ticket: 65966 **DST#: 1**
 Test Start: 2019.07.18 @ 19:20:00

GENERAL INFORMATION:

Formation: **Mississippi**
 Deviated: No Whipstock: ft (KB)
 Test Type: Conventional Bottom Hole (Initial)
 Time Tool Opened: 21:44:15
 Tester: Spencer J Staab
 Time Test Ended: 03:02:45
 Unit No: 84
 Interval: **4278.00 ft (KB) To 4356.00 ft (KB) (TVD)**
 Reference Elevations: 2335.00 ft (KB)
 Total Depth: 4356.00 ft (KB) (TVD)
 2327.00 ft (CF)
 Hole Diameter: 7.88 inches
 Hole Condition: Fair
 KB to GR/CF: 8.00 ft

Serial #: 8934 Inside
 Press@RunDepth: 70.92 psig @ 4281.00 ft (KB) Capacity: 8000.00 psig
 Start Date: 2019.07.18 End Date: 2019.07.19 Last Calib.: 2019.07.19
 Start Time: 19:20:15 End Time: 03:02:45 Time On Btm: 2019.07.18 @ 21:43:45
 Time Off Btm: 2019.07.19 @ 00:50:15

TEST COMMENT: 15-IF-Weak; Built to 3 1/2"
 30-ISI-No Return
 45-FF-Weak; Built to 1 1/4"
 90-FSI-No Return



PRESSURE SUMMARY

Time (Mn.)	Pressure (psig)	Temp (deg F)	Annotation
0	2205.62	117.92	Initial Hydro-static
1	60.20	117.47	Open To Flow (1)
17	66.39	117.13	Shut-In(1)
47	513.60	118.13	End Shut-In(1)
48	63.55	118.02	Open To Flow (2)
93	70.92	118.93	Shut-In(2)
186	362.93	120.43	End Shut-In(2)
187	2130.55	120.77	Final Hydro-static

Recovery

Length (ft)	Description	Volume (bbl)
20.00	MO 50%M 50%O	0.28
30.00	GO 30%G 70%O	0.43

Gas Rates

Choke (inches)	Pressure (psig)	Gas Rate (Mcf/d)



TRILOBITE TESTING, INC.

DRILL STEM TEST REPORT

Stewart Producers Inc
 PO Box 546
 MT Vernon IL 62864+0546
 ATTN: Andrew Stenzel

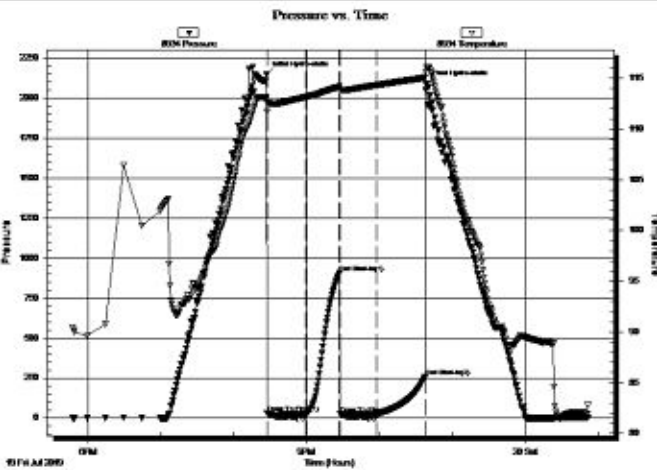
8-18s-24w Ness, KS
Peddie-Hoovler #1
 Job Ticket: 65967 **DST#: 2**
 Test Start: 2019.07.19 @ 17:47:00

GENERAL INFORMATION:

Formation: **Ft. Scott**
 Deviated: No Whipstock: ft (KB)
 Time Tool Opened: 20:27:15
 Time Test Ended: 00:51:30
 Interval: **4220.00 ft (KB) To 4277.00 ft (KB) (TVD)**
 Total Depth: 4422.00 ft (KB) (TVD)
 Hole Diameter: 7.88 inches Hole Condition: Fair
 Test Type: Conventional Straddle (Reset)
 Tester: Spencer J Staab
 Unit No: 84
 Reference Elevations: 2335.00 ft (KB)
 2327.00 ft (CF)
 KB to GR/CF: 8.00 ft

Serial #: 8934 Inside
 Press@RunDepth: 26.02 psig @ 4223.00 ft (KB) Capacity: 8000.00 psig
 Start Date: 2019.07.19 End Date: 2019.07.20 Last Calib.: 2019.07.20
 Start Time: 17:47:15 End Time: 00:51:30 Time On Btm: 2019.07.19 @ 20:27:00
 Time Off Btm: 2019.07.19 @ 22:39:00

TEST COMMENT: 30-IF-Weak; Built to 1/2"
 30-ISI-No Return
 30-FF-No Blow
 30-FSI-No Return



PRESSURE SUMMARY

Time (Min.)	Pressure (psig)	Temp (deg F)	Annotation
0	2145.94	113.07	Initial Hydro-static
1	29.32	111.71	Open To Flow (1)
32	23.53	113.14	Shut-In(1)
60	908.49	114.16	End Shut-In(1)
61	26.42	113.65	Open To Flow (2)
91	26.02	114.32	Shut-In(2)
131	257.24	115.06	End Shut-In(2)
132	2088.10	116.10	Final Hydro-static

Recovery


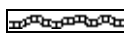
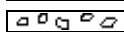
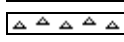
Length (ft)	Description	Volume (bbl)
30.00	OSM 100%M	0.43

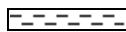



* Recovery from multiple tests





Gas Rates

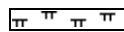

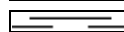
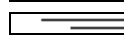
Choke (inches)	Pressure (psig)	Gas Rate (Mcf/d)

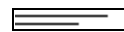



ROCK TYPES

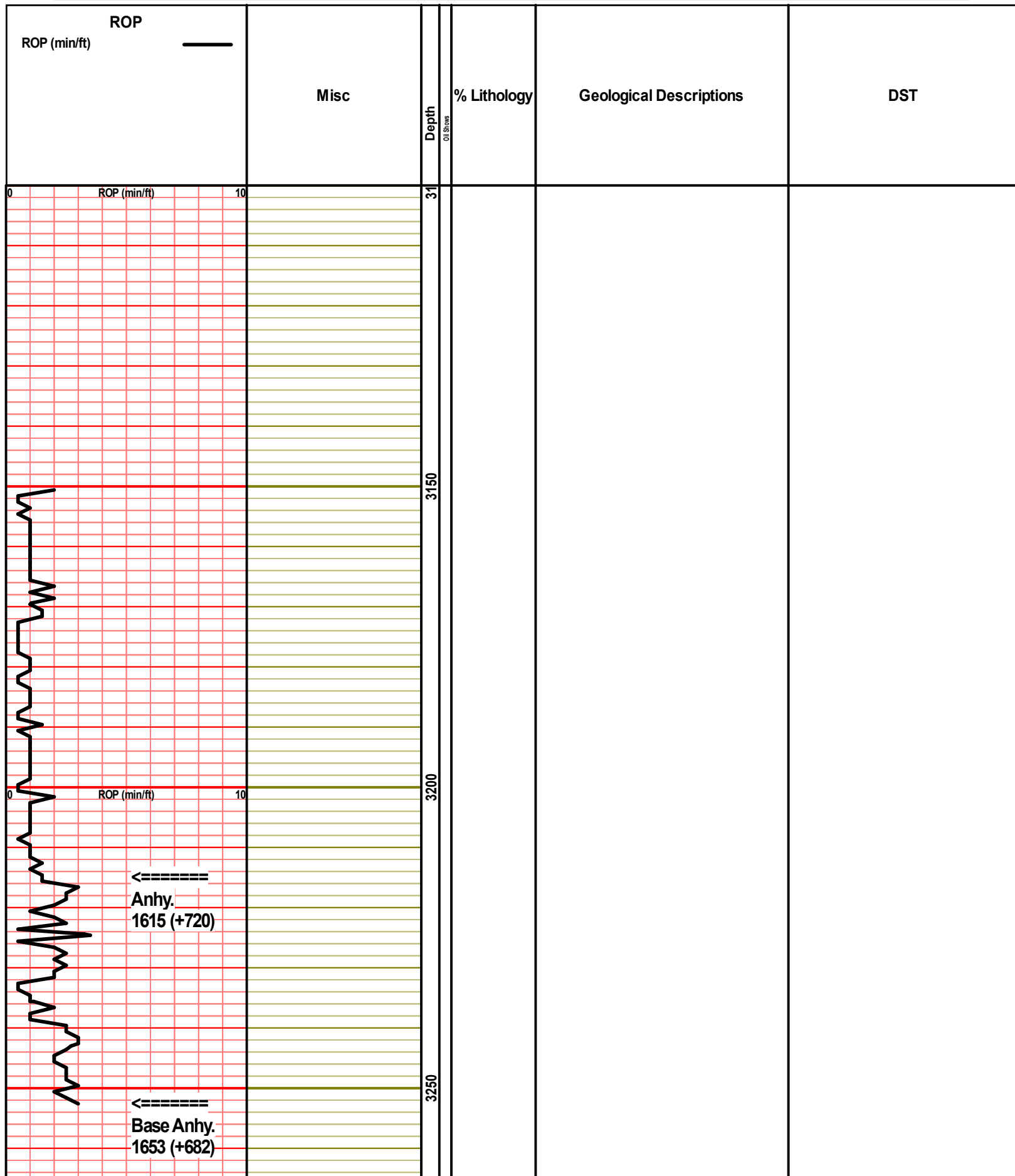
-  Anhy
-  Bent
-  Brec
-  Cht

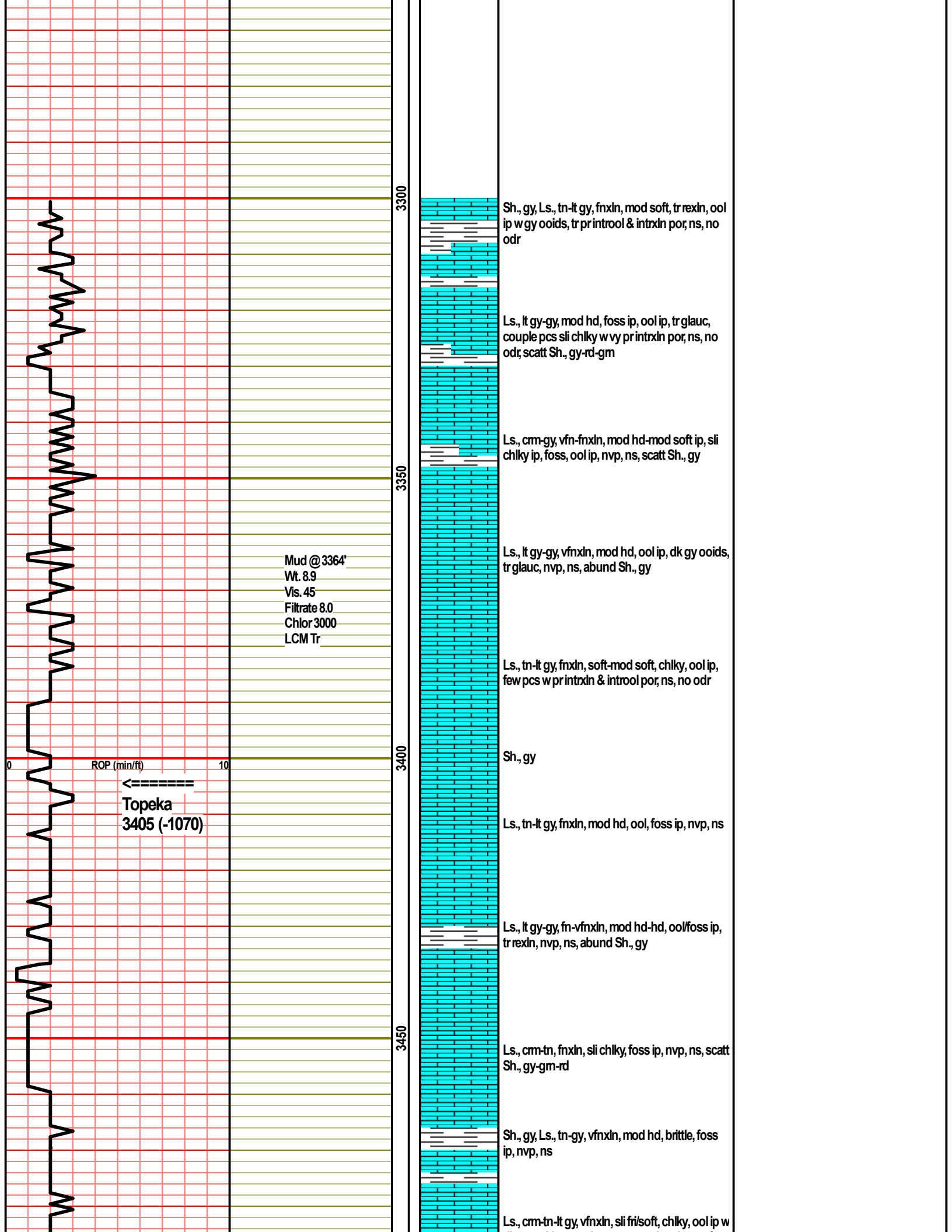
-  Clyst
-  Carb shale
-  Congl
-  Dol

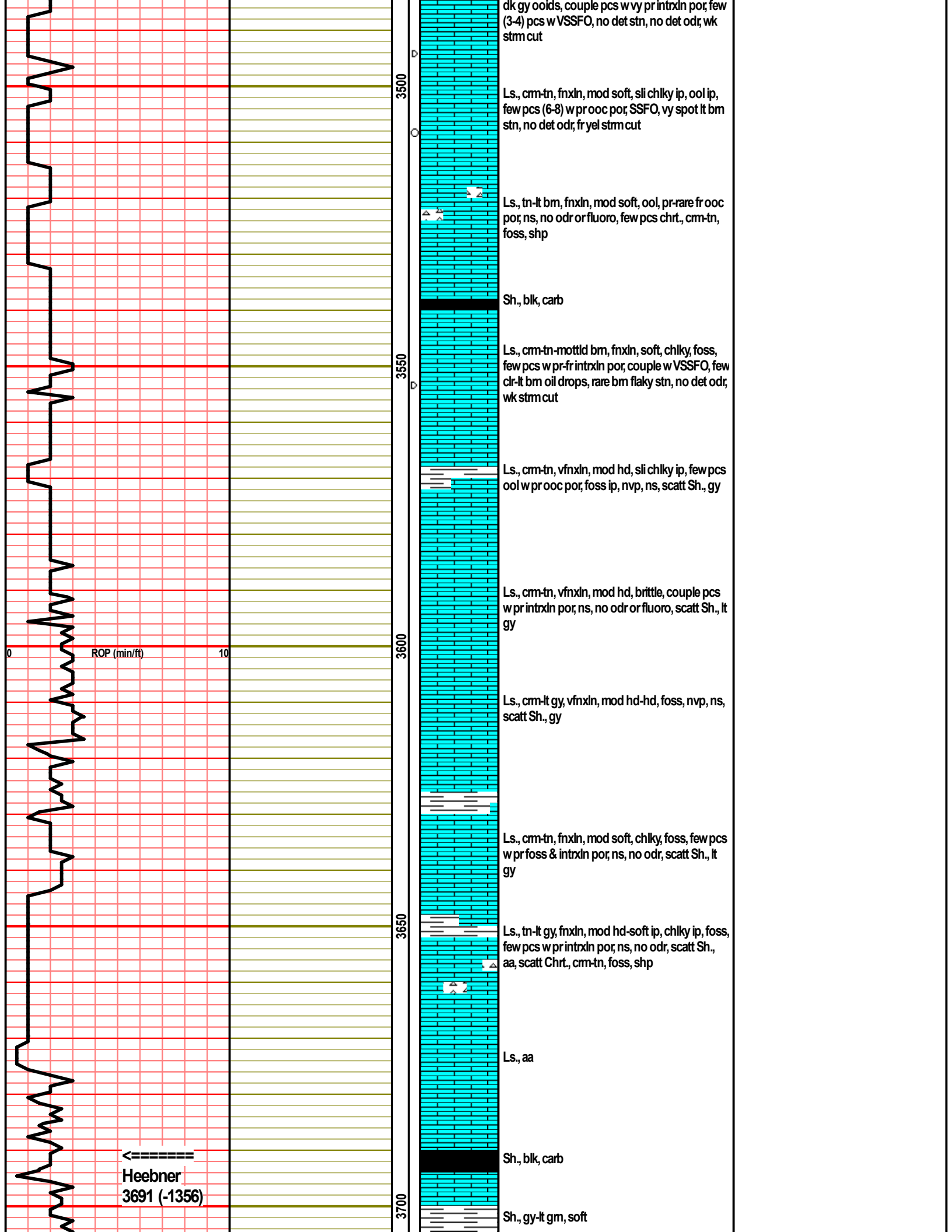
-  Gyp
-  Igne
-  Lmst
-  Meta

-  Mrlst
-  Salt
-  Shale
-  Shcol

-  Shgy
-  Sltst
-  Ss
-  Till



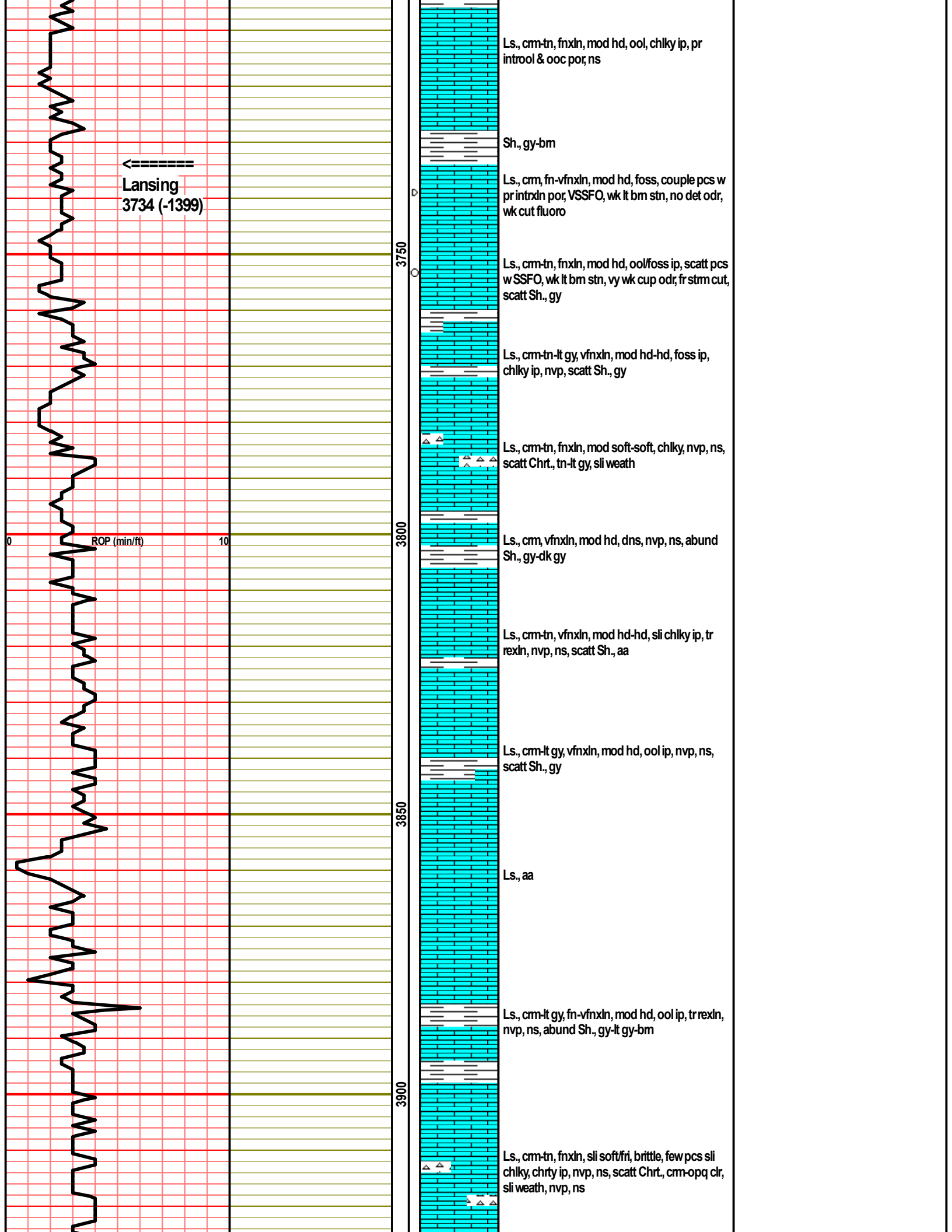




3500
3550
3600
3650
3700

ROP (min/ft)

← Heebner
3691 (-1356)



← Lansing
3734 (-1399)

ROP (min/ft)

3750

3800

3850

3900

Mud @ 3938'
Wt. 9.4
Vis. 45
Filtrate 8.8
Chlor 4500
LCM Tr

3950

Ls., cm, vfnxn, mod soft, chlky, nvp, ns, abund
Sh., lt gy-bm-lt gm

Ls., cm, fnxn, mod hd-mod soft ip, some rexln
w pr intrxn por, ns, no odr or fluoro, scatt Sh.,
gy-dk gy

Ls., cm, fn-vfnxn, mod hd, ool, pr ooc por, ns,
no odr or fluoro

4000

Ls., tn-lt bm, fnxn, mod hd, ool ip, sli chlky,
nvp, ns, scatt Sh., gy-bm

← Stark Sh
4014 (-1679)

Sh., blk, carb

Ls., cm-tn, fnxn, mod hd-mod soft ip, chlky,
ool ip, nvp, ns, no odr; scatt Chrt., cm, foss,
shp

Sh., blk, carb

4050

Ls., tn-lt bm-lt gy, vfnxn, hd, dns, brittle ip, tr
rexln, nvp, ns, no odr; scatt Chrt., gy, shp, spic,
scatt Sh., gy-bm

← BKC
4069 (-1734)

Sh., bm-gy

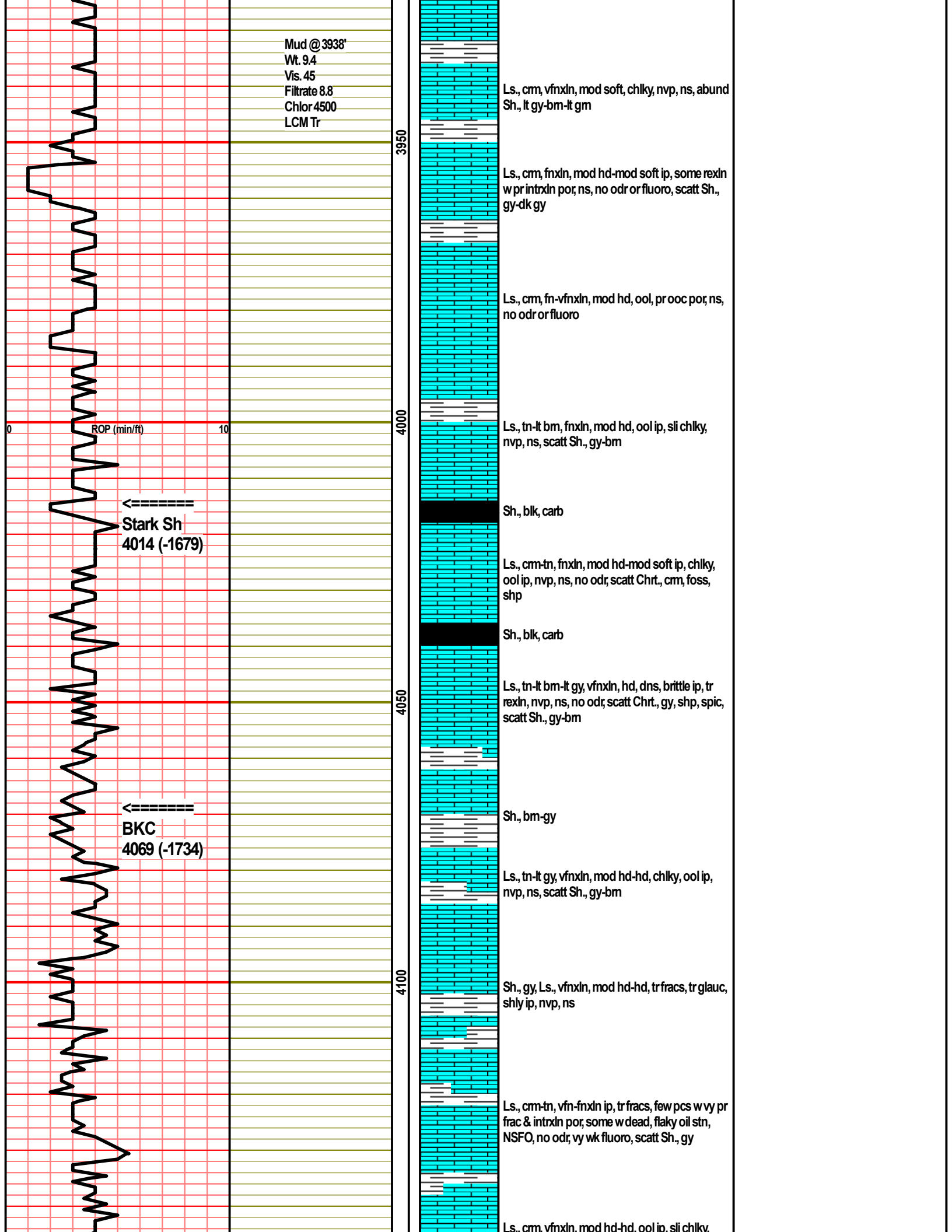
Ls., tn-lt gy, vfnxn, mod hd-hd, chlky, ool ip,
nvp, ns, scatt Sh., gy-bm

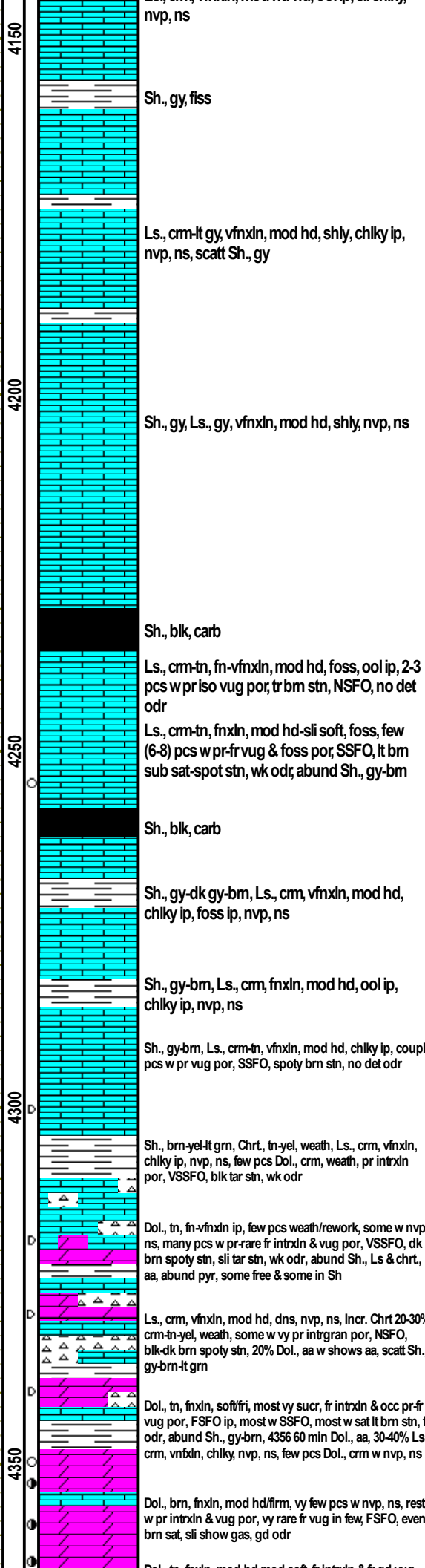
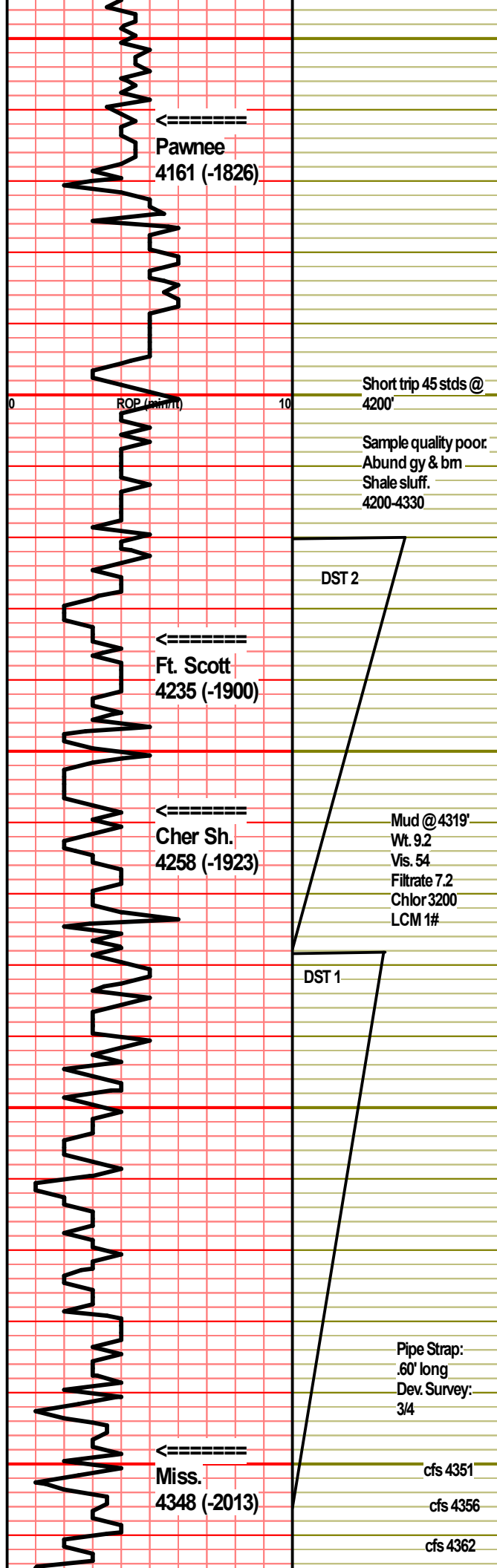
4100

Sh., gy, Ls., vfnxn, mod hd-hd, tr fracs, tr glauc,
shly ip, nvp, ns

Ls., cm-tn, vfn-fnxln ip, tr fracs, few pcs w vy pr
frac & intrxn por; some w dead, flaky oil stn,
NSFO, no odr, vy wk fluoro, scatt Sh., gy

Ls., cm, vfnxn, mod hd-hd, ool ip, sli chlkv.





DST #2 4220-4277 (Ft. Scott)
 30-30-30-30
 IF: WSB, built to 1/2"
 IS: No blow
 FF: No blow
 FS: No blow

Recovery:
 30' OSM (100%M)

FP: 29-24; 26-26
 SIP: 908-257
 HP: 2146-2088

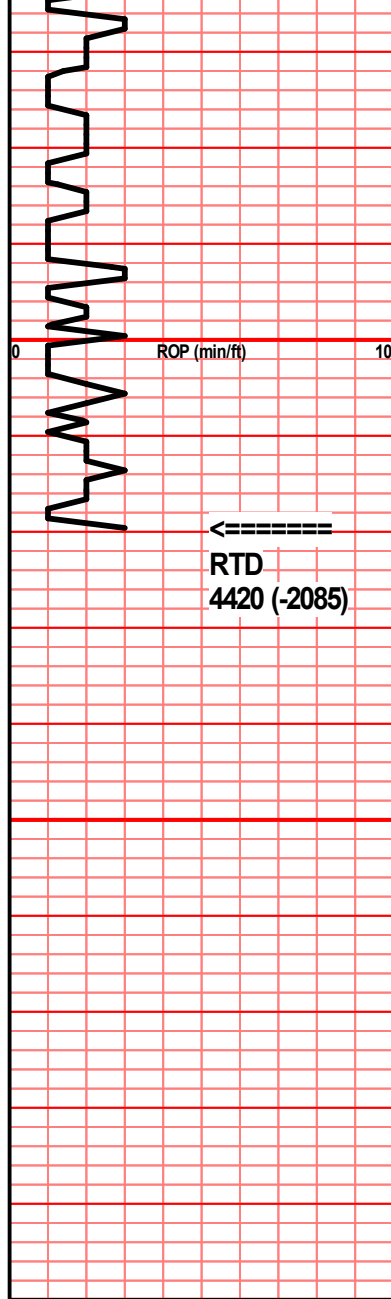
BHT: 115
 Gravity: -
 Chlor: ---

DST #1 4278-4356 (Mississippi)
 4278-4356
 15-30-45-90
 IF: WSB, built to 3 1/2"
 IS: No blow
 FF: WSB, built to 1 1/4"
 FS: No blow

Recovery:
 20' MO (50%M, 50%O)
 30' GO (30%G, 70%O)

FP: 60-66; 64-71
 SIP: 514-363
 HP: 2206-2131

BHT: 120
 Gravity: 39
 Chlor: ---



cfs 4370

RTD
4420 (-2085)

Mud @4420'
Wt. 9.3
Vis. 61
Filtrate 7.6
Chlor 3800
LCM 1#

4400

4450

4500



Dol., tn, inxn, mod no-mod sot, ir inxn & ir-ga vug por, SSFO, FSFO in few, some spoty blk stn, vy few w sli show gas, 20-30% barren, fr odr

Dol., crm-tn, fnxln, mod hd, foss ip, pr-fr intrxn, vug & occ spic cast por, 20-30% w SSFO, vy few w FSFO, spot blk stn, wk odr, abund Sh., gy-lt gy

Dol., aa, decr shows, abund Sh., aa, scatt Chrt., wht-clr, broken/weath

Dol., cm, fnxln, mod hd-sli fr, fr vug por, couple pcs w VSSFO, tr blk stn, no det odr, abund Sh., gy-lt gy, scatt Chrt., aa