

# T27S, R33W, 6th P.M.

## LEGEND:

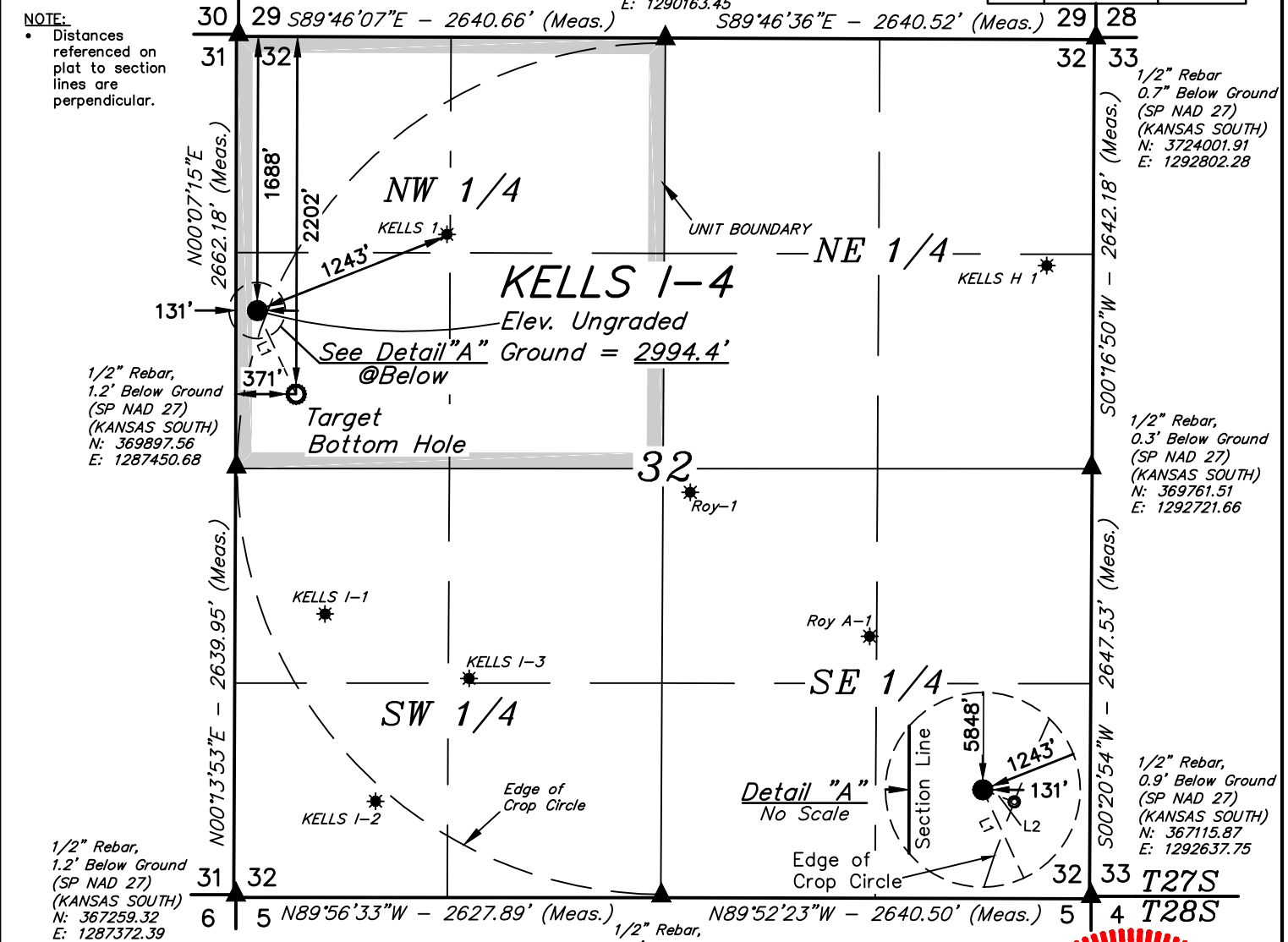
- = PROPOSED WELLHEAD.
- = TARGET BOTTOM HOLE.
- ▲ = SECTION CORNERS LOCATED.
- \* = EXISTING WELLS

Mag Nail  
0.1' Below Ground  
(SP NAD 27)  
(KANSAS SOUTH)  
N: 372558.15  
E: 1287524.49

1/2" Rebar W/LS  
1289 Cap  
0.5' Below Ground  
(SP NAD 27)  
(KANSAS SOUTH)  
N: 372479.84  
E: 1290163.45

LINE TABLE		
LINE	DIRECTION	LENGTH
L1	S24°55'07"E	567.63'
L2	S68°42'17"E	59.80'

**NOTE:**  
Distances referenced on plat to section lines are perpendicular.



## CERTIFICATE

THIS IS TO CERTIFY THAT THE ABOVE PLAT WAS PREPARED FROM FIELD NOTES OF ACTUAL SURVEYS MADE BY ME OR UNDER MY SUPERVISION AND THAT THE SAME ARE TRUE AND CORRECT TO THE BEST OF MY KNOWLEDGE AND BELIEF.



<b>NAD 83 (SURFACE LOCATION)</b>	<b>NAD 83 (TARGET BOTTOM HOLE)</b>
LATITUDE = 37°39'33.89" (37.659414)	LATITUDE = 37°39'28.80" (37.658001)
LONGITUDE = 100°57'41.91" (100.961641)	LONGITUDE = 100°57'38.93" (100.960814)
<b>NAD 27 (SURFACE LOCATION)</b>	<b>NAD 27 (TARGET BOTTOM HOLE)</b>
LATITUDE = 37°39'33.81" (37.659390)	LATITUDE = 37°39'28.72" (37.657977)
LONGITUDE = 100°57'40.31" (100.961196)	LONGITUDE = 100°57'37.33" (100.960369)
<b>STATE PLANE NAD 83 (KANSAS SOUTH)</b>	<b>STATE PLANE NAD 83 (KANSAS SOUTH)</b>
N: 1683220.76 E: 599831.00	N: 1682700.11 E: 600056.85
<b>STATE PLANE NAD 27 (KANSAS SOUTH)</b>	<b>STATE PLANE NAD 27 (KANSAS SOUTH)</b>
N: 370867.12 E: 1287608.56	N: 370346.48 E: 1287834.40

**BASIS OF BEARINGS**  
BASIS OF BEARINGS IS A G.P.S. OBSERVATION

**BASIS OF ELEVATION**

ELEVATION 2943.84' WAS DERIVED FROM AN OPUS SOLUTION AT LAT: 37°33'17.64" LONG: 100°53'21.35" AND HAS A DATUM OF NAVD88.



## MERIT ENERGY COMPANY

**KELLS I-4**  
1688' FNL 131' FWL  
SW 1/4 NW 1/4, SECTION 32, T27S, R33W, 6th P.M.  
HASKELL COUNTY, KANSAS

<b>SURVEYED BY</b>	J.P.	07-23-19	<b>SCALE</b>
<b>DRAWN BY</b>	B.G.	07-25-19	1" = 1000'

## WELL LOCATION PLAT



**UELS, LLC**  
Corporate Office \* 85 South 200 East  
Vernal, UT 84078 \* (435) 789-1017

# T27S, R33W, 6th P.M.

## LEGEND:

- = PROPOSED WELLHEAD.
- = TARGET BOTTOM HOLE.
- ▲ = SECTION CORNERS LOCATED.
- ★ = EXISTING WELLS

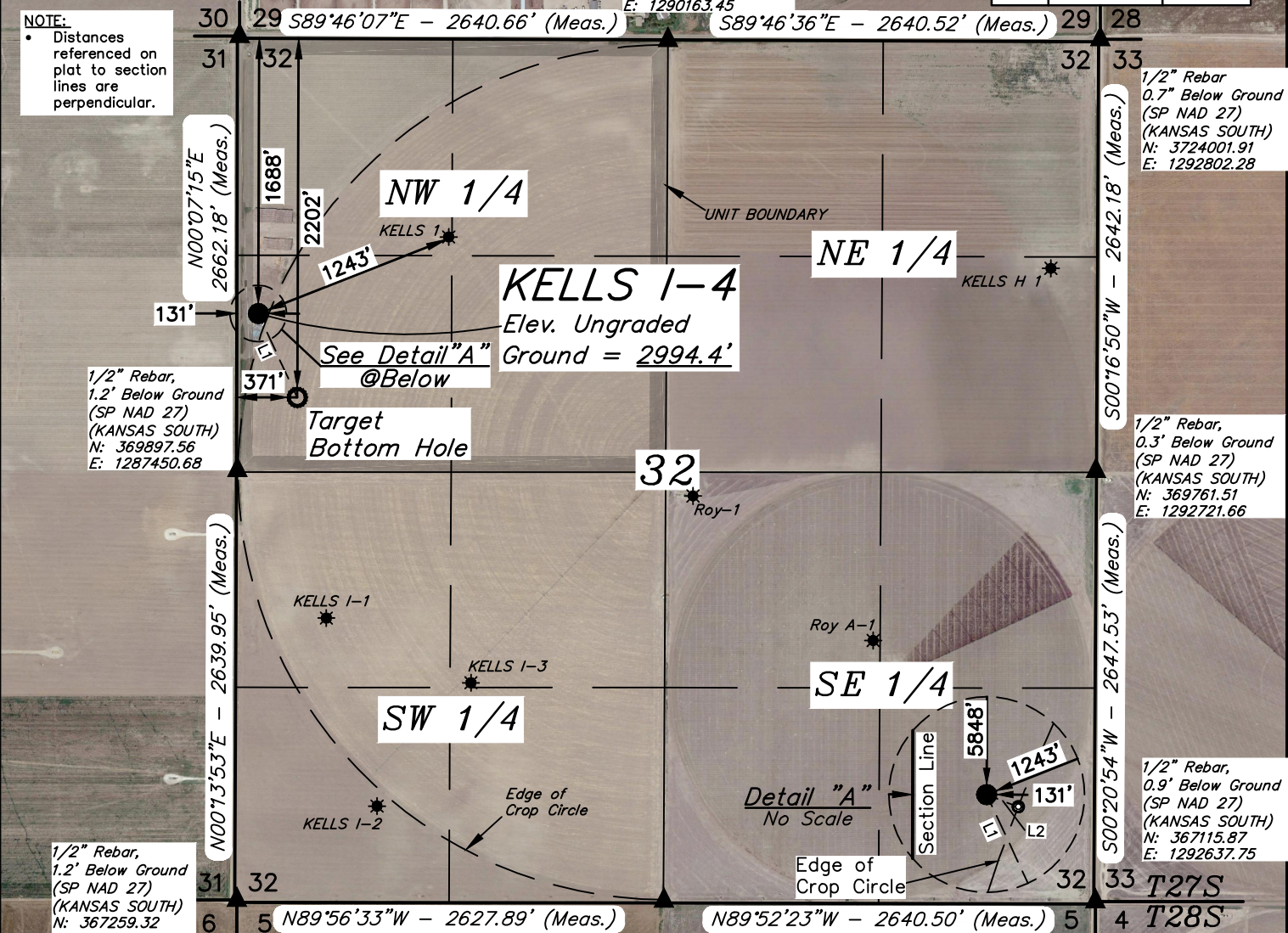
Mag Nail  
0.1' Below Ground  
(SP NAD 27)  
(KANSAS SOUTH)  
N: 372558.15  
E: 1287524.49

1/2" Rebar W/LS  
1289 Cap  
0.5' Below Ground  
(SP NAD 27)  
(KANSAS SOUTH)  
N: 372479.84  
E: 1290163.45

## LINE TABLE

LINE	DIRECTION	LENGTH
L1	S24°55'07"E	567.63'
L2	S68°42'17"E	59.80'

NOTE:  
Distances referenced on plat to section lines are perpendicular.



1/2" Rebar,  
0.3' Below Ground  
(SP NAD 27)  
(KANSAS SOUTH)  
N: 367189.36  
E: 128998.81

## CERTIFICATE

THIS IS TO CERTIFY THAT THE ABOVE PLAT WAS PREPARED FROM FIELD NOTES OF ACTUAL SURVEYS MADE BY ME OR UNDER MY SUPERVISION AND THAT THE SAME ARE TRUE AND CORRECT TO THE BEST OF MY KNOWLEDGE AND BELIEF.



<b>NAD 83 (SURFACE LOCATION)</b>	<b>NAD 83 (TARGET BOTTOM HOLE)</b>
LATITUDE = 37°39'33.89" (37.659414)	LATITUDE = 37°39'28.80" (37.658001)
LONGITUDE = 100°57'41.91" (100.961641)	LONGITUDE = 100°57'38.93" (100.960814)
<b>NAD 27 (SURFACE LOCATION)</b>	<b>NAD 27 (TARGET BOTTOM HOLE)</b>
LATITUDE = 37°39'33.81" (37.659390)	LATITUDE = 37°39'28.72" (37.657977)
LONGITUDE = 100°57'40.31" (100.961196)	LONGITUDE = 100°57'37.33" (100.960369)
<b>STATE PLANE NAD 83 (KANSAS SOUTH)</b>	<b>STATE PLANE NAD 83 (KANSAS SOUTH)</b>
N: 1683220.76 E: 599831.00	N: 1682700.11 E: 600056.85
<b>STATE PLANE NAD 27 (KANSAS SOUTH)</b>	<b>STATE PLANE NAD 27 (KANSAS SOUTH)</b>
N: 370867.12 E: 1287608.56	N: 370346.48 E: 1287834.40

## BASIS OF BEARINGS

BASIS OF BEARINGS IS A G.P.S. OBSERVATION

## BASIS OF ELEVATION

ELEVATION 2943.84' WAS DERIVED FROM AN OPUS SOLUTION AT LAT: 37°33'17.64" LONG: 100°53'21.35" AND HAS A DATUM OF NAVD88.



## MERIT ENERGY COMPANY

**KELLS I-4**  
1688' FNL 131' FWL  
SW 1/4 NW 1/4, SECTION 32, T27S, R33W, 6th P.M.  
HASKELL COUNTY, KANSAS

SURVEYED BY	J.P.	07-23-19	SCALE
DRAWN BY	B.G.	07-25-19	1" = 1000'

## WELL LOCATION PLAT



**UELS, LLC**  
Corporate Office \* 85 South 200 East  
Vernal, UT 84078 \* (435) 789-1017

BEGINNING AT THE INTERSECTION OF US-56 AND N. INMAN STREET IN SUBLETTE, KANSAS PROCEED IN A NORTHERLY DIRECTION ON N. INMAN STREET APPROXIMATELY 0.4 MILES TO THE JUNCTION OF THIS ROAD AND COUNTY ROAD 180 TO THE WEST. TURN LEFT AND PROCEED IN A WESTERLY DIRECTION APPROXIMATELY 1.5 MILES TO THE JUNCTION OF THIS ROAD AND US-160 TO THE NORTH. TURN RIGHT AND PROCEED IN A NORTHERLY DIRECTION APPROXIMATELY 13.1 MILES TO THE JUNCTION OF THIS ROAD AND COUNTY ROAD 50 TO THE WEST. TURN LEFT AND PROCEED IN A WESTERLY DIRECTION APPROXIMATELY 5.0 MILES TO THE JUNCTION OF THIS ROAD AND COUNTY ROAD HH TO THE SOUTH. TURN LEFT AND PROCEED IN A SOUTHERLY DIRECTION APPROXIMATELY 1.3 MILES. FROM THIS POINT, THE PROPOSED WELL LOCATION IS APPROXIMATELY 131' EASTERLY.

TOTAL DISTANCE FROM SUBLETTE, KANSAS TO THE PROPOSED WELL LOCATION IS APPROXIMATELY 21.3 MILES.

**MERIT ENERGY COMPANY**

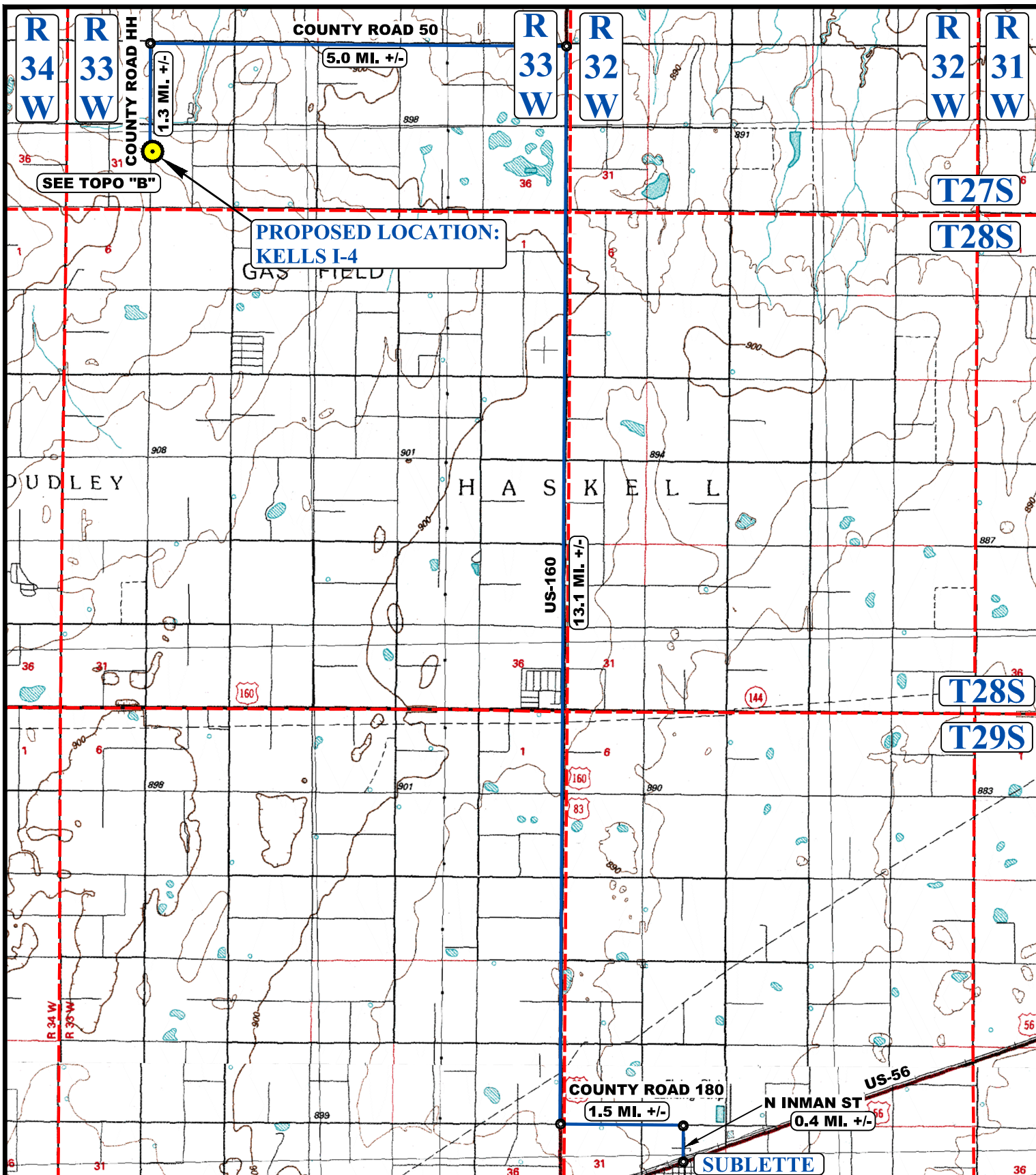
**KELLS I-4  
1688' FNL 131' FWL  
SW 1/4 NW 1/4, SECTION 32, T27S, R33W, 6th P.M.  
HASKELL COUNTY, KANSAS**

<b>SURVEYED BY</b>	J.P.	07-23-19	
<b>DRAWN BY</b>	B.G.	07-25-19	
<b>ROAD DESCRIPTION</b>			

**UELS, LLC**

Corporate Office \* 85 South 200 East  
Vernal, UT 84078 \* (435) 789-1017





**LEGEND:**

 PROPOSED LOCATION



**MERIT ENERGY COMPANY**

**KELLS I-4**  
 1688' FNL 131' FWL  
 SW 1/4 NW 1/4, SECTION 32, T27S, R33W, 6th P.M.  
 HASKELL COUNTY, KANSAS



**UELS, LLC**  
 Corporate Office \* 85 South 200 East  
 Vernal, UT 84078 \* (435) 789-1017

SURVEYED BY	J.P.	07-23-19	SCALE
DRAWN BY	B.G.	07-25-19	1 : 100,000
<b>ACCESS ROAD MAP</b>			<b>TOPO A</b>

R  
33  
W

COUNTY ROAD 50

SUBLETTE 20.0 MI. +/-

COUNTY ROAD HH

1.3 MI. +/-

RUSSELL KELLS FARM  
LLC

PROPOSED LOCATION:  
KELLS I-4

T27S

T28S

T28S R33W

NOTE: PARCEL DATA SHOWN HAS BEEN OBTAINED FROM VARIOUS SOURCES AND SHOULD BE USED FOR MAPPING, GRAPHIC AND PLANNING PURPOSES ONLY. NO WARRANTY IS MADE BY UINTAH ENGINEERING AND LAND SURVEYING (UELS) FOR ACCURACY OF THE PARCEL DATA.

**LEGEND:**

— EXISTING ROAD



**MERIT ENERGY COMPANY**

**KELLS I-4**  
1688' FNL 131' FWL  
SW 1/4 NW 1/4, SECTION 32, T27S, R33W, 6th P.M.  
HASKELL COUNTY, KANSAS

SURVEYED BY	J.P.	07-23-19	SCALE
DRAWN BY	B.G.	07-25-19	1 : 24,000

**ACCESS ROAD MAP**

**TOPO B**



**UELS, LLC**  
Corporate Office \* 85 South 200 East  
Vernal, UT 84078 \* (435) 789-1017