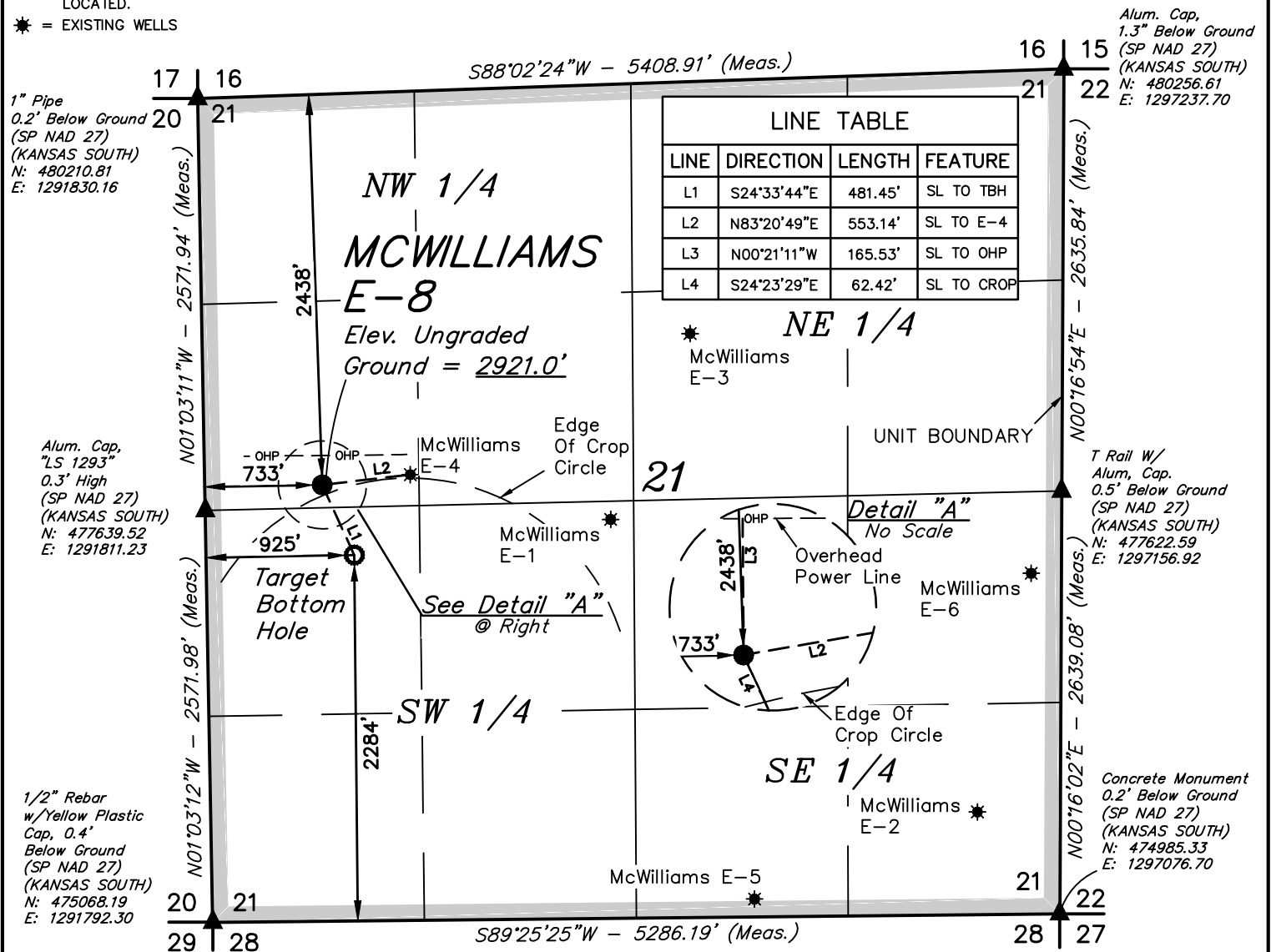




**LEGEND:**

- = PROPOSED WELLHEAD.
- = TARGET BOTTOM HOLE.
- ▲ = SECTION CORNERS LOCATED.
- \* = EXISTING WELLS

# T24S, R33W, 6th P.M.



CERTIFICATE  
THIS IS TO CERTIFY THAT THE ABOVE PLAT WAS PREPARED FROM FIELD NOTES OF ACTUAL SURVEYS MADE BY ME OR UNDER MY SUPERVISION AND THAT THE SAME ARE TRUE AND CORRECT TO THE BEST OF MY KNOWLEDGE AND BELIEF.



<b>NAD 83 (SURFACE LOCATION)</b>	<b>NAD 83 (TARGET BOTTOM HOLE)</b>
LATITUDE = 37°57'11.84" (37.953290)	LATITUDE = 37°57'07.52" (37.952088)
LONGITUDE = 100°57'15.52" (100.954311)	LONGITUDE = 100°57'13.02" (100.953616)
<b>NAD 27 (SURFACE LOCATION)</b>	<b>NAD 27 (TARGET BOTTOM HOLE)</b>
LATITUDE = 37°57'11.76" (37.953266)	LATITUDE = 37°57'07.43" (37.952064)
LONGITUDE = 100°57'13.92" (100.953868)	LONGITUDE = 100°57'11.42" (100.953173)
<b>STATE PLANE NAD 83 (KANSAS SOUTH)</b>	<b>STATE PLANE NAD 83 (KANSAS SOUTH)</b>
N: 1790135.66 E: 604768.78	N: 1789692.85 E: 604957.53
<b>STATE PLANE NAD 27 (KANSAS SOUTH)</b>	<b>STATE PLANE NAD 27 (KANSAS SOUTH)</b>
N: 477779.79 E: 1292545.25	N: 477337.00 E: 1292734.00

**BASIS OF BEARINGS**  
BASIS OF BEARINGS IS A G.P.S. OBSERVATION

**BASIS OF ELEVATION**  
ELEVATION 2848.98' WAS DERIVED FROM AN OPUS SOLUTION AT LAT: 37°58'08.99" LONG: 100°54'04.80" AND HAS A DATUM OF NAVD88.



**MERIT ENERGY COMPANY**

**MCWILLIAMS E-8**  
**2438' FNL 733' FWL**  
**SW 1/4 NW 1/4, SECTION 21, T24S, R33W, 6th P.M.**  
**FINNEY COUNTY, KANSAS**

<b>SURVEYED BY</b>	J.P.	08-09-19	<b>SCALE</b>
<b>DRAWN BY</b>	Z.T.	08-13-19	1" = 1000'

**WELL LOCATION PLAT**

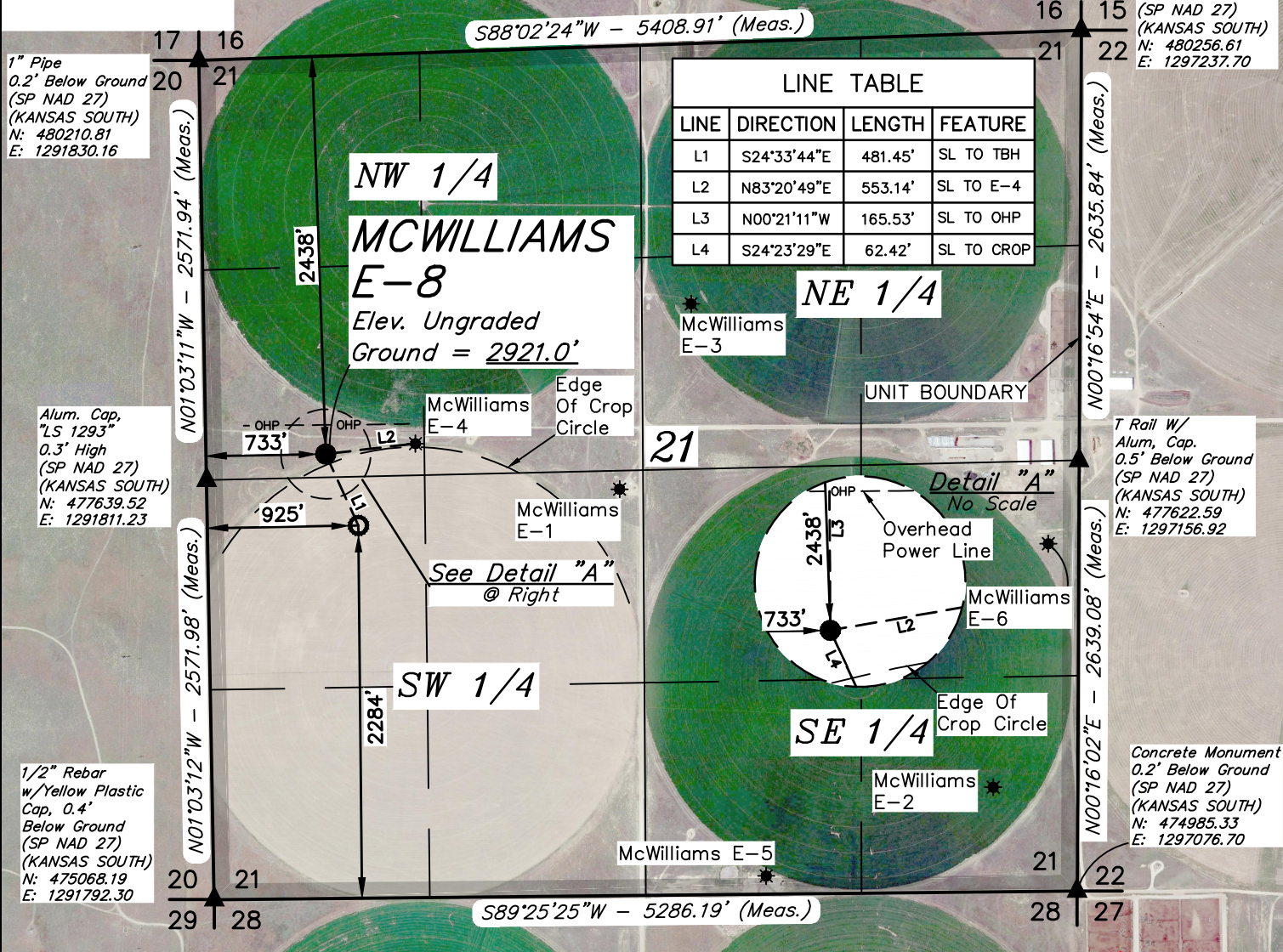


**UELS, LLC**  
Corporate Office \* 85 South 200 East  
Vernal, UT 84078 \* (435) 789-1017

# T24S, R33W, 6th P.M.

## LEGEND:

- = PROPOSED WELLHEAD.
- = TARGET BOTTOM HOLE.
- ▲ = SECTION CORNERS LOCATED.
- ★ = EXISTING WELLS



1" Pipe  
0.2' Below Ground  
(SP NAD 27)  
(KANSAS SOUTH)  
N: 480210.81  
E: 1291830.16

Alum. Cap,  
1.3" Below Ground  
(SP NAD 27)  
(KANSAS SOUTH)  
N: 480256.61  
E: 1297237.70

Alum. Cap,  
"LS 1293"  
0.3' High  
(SP NAD 27)  
(KANSAS SOUTH)  
N: 477639.52  
E: 1291811.23

T Rail W/  
Alum. Cap.  
0.5' Below Ground  
(SP NAD 27)  
(KANSAS SOUTH)  
N: 477622.59  
E: 1297156.92

1/2" Rebar  
w/Yellow Plastic  
Cap, 0.4'  
Below Ground  
(SP NAD 27)  
(KANSAS SOUTH)  
N: 475068.19  
E: 1291792.30

Concrete Monument  
0.2' Below Ground  
(SP NAD 27)  
(KANSAS SOUTH)  
N: 474985.33  
E: 1297076.70



**CERTIFICATE**  
THIS IS TO CERTIFY THAT THE ABOVE PLAT WAS PREPARED FROM FIELD NOTES OF ACTUAL SURVEYS MADE BY ME OR UNDER MY SUPERVISION AND THAT THE SAME ARE TRUE AND CORRECT TO THE BEST OF MY KNOWLEDGE AND BELIEF.



<b>NAD 83 (SURFACE LOCATION)</b>	<b>NAD 83 (TARGET BOTTOM HOLE)</b>
LATITUDE = 37°57'11.84" (37.953290)	LATITUDE = 37°57'07.52" (37.952088)
LONGITUDE = 100°57'15.52" (100.954311)	LONGITUDE = 100°57'13.02" (100.953616)
<b>NAD 27 (SURFACE LOCATION)</b>	<b>NAD 27 (TARGET BOTTOM HOLE)</b>
LATITUDE = 37°57'11.76" (37.953266)	LATITUDE = 37°57'07.43" (37.952064)
LONGITUDE = 100°57'13.92" (100.953868)	LONGITUDE = 100°57'11.42" (100.953173)
<b>STATE PLANE NAD 83 (KANSAS SOUTH)</b>	<b>STATE PLANE NAD 83 (KANSAS SOUTH)</b>
N: 1790135.66 E: 604768.78	N: 1789692.85 E: 604957.53
<b>STATE PLANE NAD 27 (KANSAS SOUTH)</b>	<b>STATE PLANE NAD 27 (KANSAS SOUTH)</b>
N: 477779.79 E: 1292545.25	N: 477337.00 E: 1292734.00

**BASIS OF BEARINGS**  
BASIS OF BEARINGS IS A G.P.S. OBSERVATION

**BASIS OF ELEVATION**  
ELEVATION 2848.98' WAS DERIVED FROM AN OPUS SOLUTION AT  
LAT: 37°58'08.99" LONG: 100°54'04.80" AND HAS A DATUM OF NAVD88.



**MERIT ENERGY COMPANY**  
**MCWILLIAMS E-8**  
**2438' FNL 733' FWL**  
**SW 1/4 NW 1/4, SECTION 21, T24S, R33W, 6th P.M.**  
**FINNEY COUNTY, KANSAS**

<b>SURVEYED BY</b>	J.P.	08-09-19	<b>SCALE</b>
<b>DRAWN BY</b>	Z.T.	08-13-19	1" = 1000'



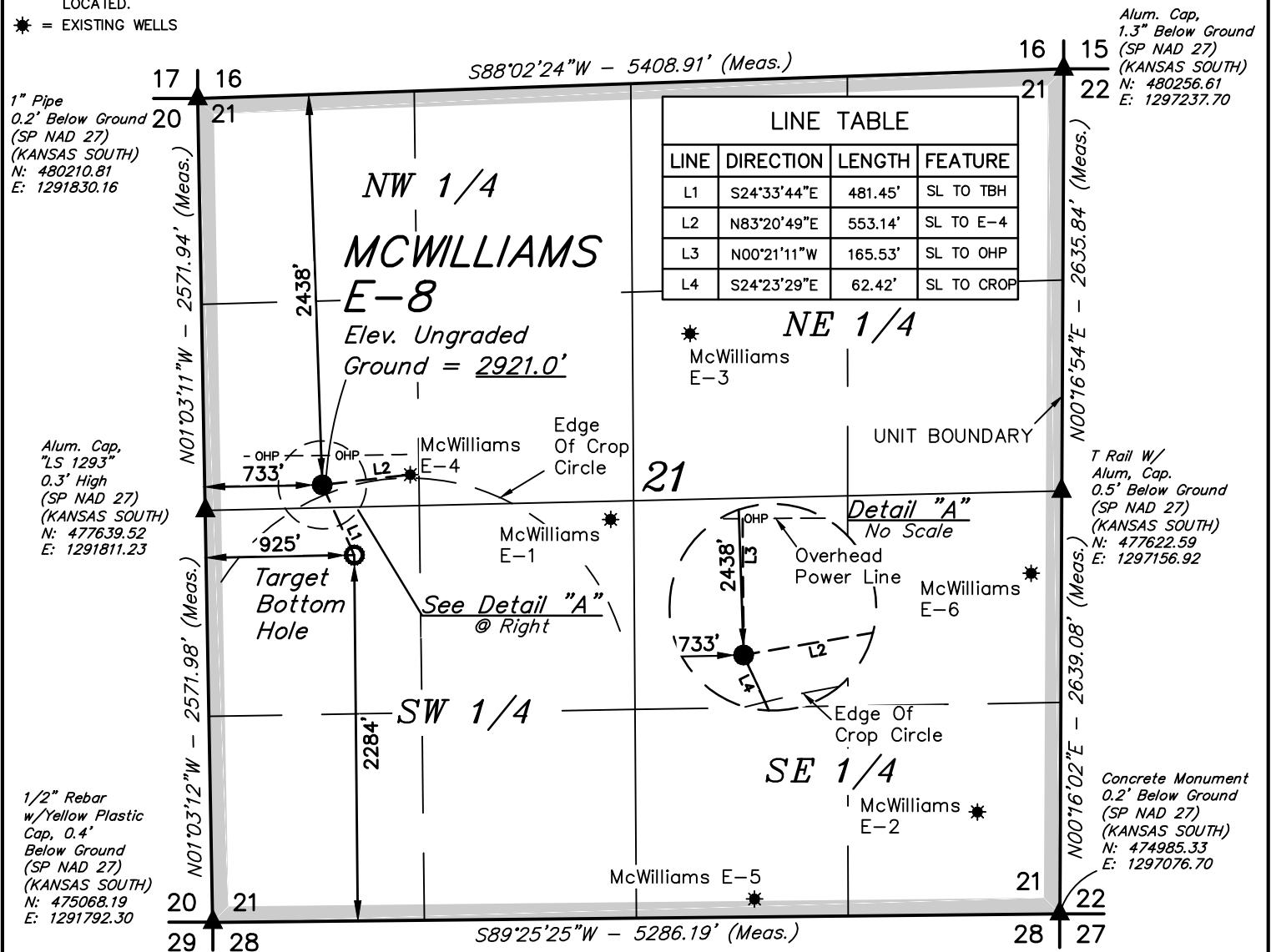
**UELS, LLC**  
Corporate Office \* 85 South 200 East  
Vernal, UT 84078 \* (435) 789-1017

## WELL LOCATION PLAT

**LEGEND:**

- = PROPOSED WELLHEAD.
- = TARGET BOTTOM HOLE.
- ▲ = SECTION CORNERS LOCATED.
- \* = EXISTING WELLS

# T24S, R33W, 6th P.M.



CERTIFICATE  
THIS IS TO CERTIFY THAT THE ABOVE PLAT WAS PREPARED FROM FIELD NOTES OF ACTUAL SURVEYS MADE BY ME OR UNDER MY SUPERVISION AND THAT THE SAME ARE TRUE AND CORRECT TO THE BEST OF MY KNOWLEDGE AND BELIEF.



<b>NAD 83 (SURFACE LOCATION)</b>	<b>NAD 83 (TARGET BOTTOM HOLE)</b>
LATITUDE = 37°57'11.84" (37.953290)	LATITUDE = 37°57'07.52" (37.952088)
LONGITUDE = 100°57'15.52" (100.954311)	LONGITUDE = 100°57'13.02" (100.953616)
<b>NAD 27 (SURFACE LOCATION)</b>	<b>NAD 27 (TARGET BOTTOM HOLE)</b>
LATITUDE = 37°57'11.76" (37.953266)	LATITUDE = 37°57'07.43" (37.952064)
LONGITUDE = 100°57'13.92" (100.953868)	LONGITUDE = 100°57'11.42" (100.953173)
<b>STATE PLANE NAD 83 (KANSAS SOUTH)</b>	<b>STATE PLANE NAD 83 (KANSAS SOUTH)</b>
N: 1790135.66 E: 604768.78	N: 1789692.85 E: 604957.53
<b>STATE PLANE NAD 27 (KANSAS SOUTH)</b>	<b>STATE PLANE NAD 27 (KANSAS SOUTH)</b>
N: 477779.79 E: 1292545.25	N: 477337.00 E: 1292734.00

**BASIS OF BEARINGS**  
BASIS OF BEARINGS IS A G.P.S. OBSERVATION

**BASIS OF ELEVATION**  
ELEVATION 2848.98' WAS DERIVED FROM AN OPUS SOLUTION AT  
LAT: 37°58'08.99" LONG: 100°54'04.80" AND HAS A DATUM OF NAVD88.



**MERIT ENERGY COMPANY**

**MCWILLIAMS E-8**  
**2438' FNL 733' FWL**  
**SW 1/4 NW 1/4, SECTION 21, T24S, R33W, 6th P.M.**  
**FINNEY COUNTY, KANSAS**

<b>SURVEYED BY</b>	J.P.	08-09-19	<b>SCALE</b>
<b>DRAWN BY</b>	Z.T.	08-13-19	1" = 1000'

**WELL LOCATION PLAT**



**UELS, LLC**  
Corporate Office \* 85 South 200 East  
Vernal, UT 84078 \* (435) 789-1017

BEGINNING AT THE INTERSECTION OF US-83 AND KS-156 IN GARDEN CITY, KANSAS PROCEED IN A SOUTHWESTERLY DIRECTION ALONG US-83 APPROXIMATELY 1.6 MILES TO THE JUNCTION OF THIS ROAD AND RIVER DRIVE TO THE WEST; TURN RIGHT AND PROCEED IN A WESTERLY DIRECTION APPROXIMATELY 1.4 MILES TO THE JUNCTION OF THIS ROAD AND SAGEBRUSH ROAD TO THE WEST; PROCEED IN A WESTERLY DIRECTION APPROXIMATELY 3.0 MILES. FROM THIS POINT, THE PROPOSED WELL LOCATION IS APPROXIMATELY 160' SOUTHERLY.

TOTAL DISTANCE FROM GARDEN CITY, KANSAS TO THE PROPOSED WELL LOCATION IS APPROXIMATELY 6.0 MILES.

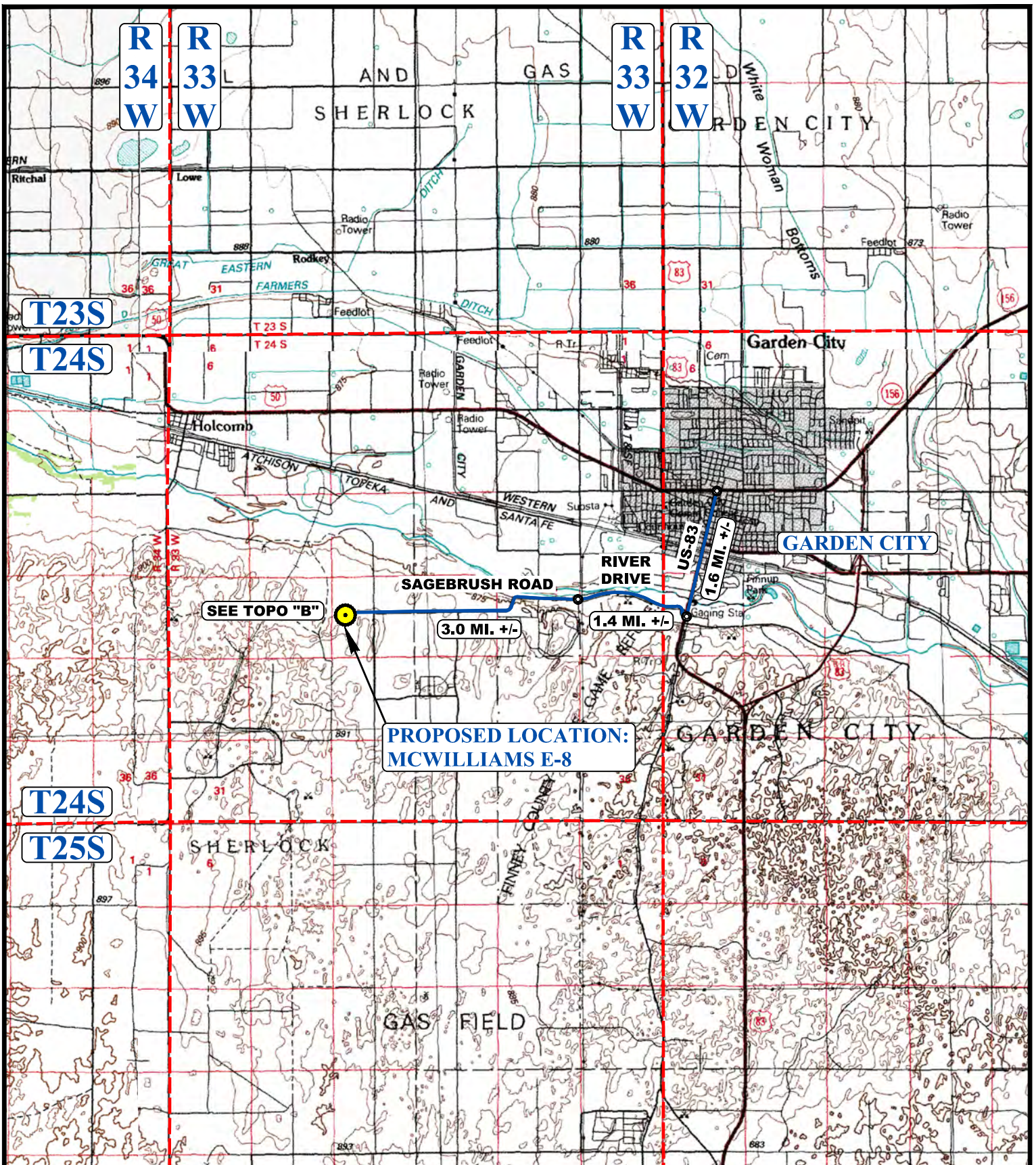
**MERIT ENERGY COMPANY**

**MCWILLIAMS E-8  
2438' FNL 733' FWL  
SW 1/4 NW 1/4, SECTION 21, T24S, R33W, 6th P.M.  
FINNEY COUNTY, KANSAS**

<b>SURVEYED BY</b>	J.P.	08-09-19	
<b>DRAWN BY</b>	Z.T.	08-13-19	
<b>ROAD DESCRIPTION</b>			



**UELS, LLC**  
Corporate Office \* 85 South 200 East  
Vernal, UT 84078 \* (435) 789-1017



**LEGEND:**

 **PROPOSED LOCATION**



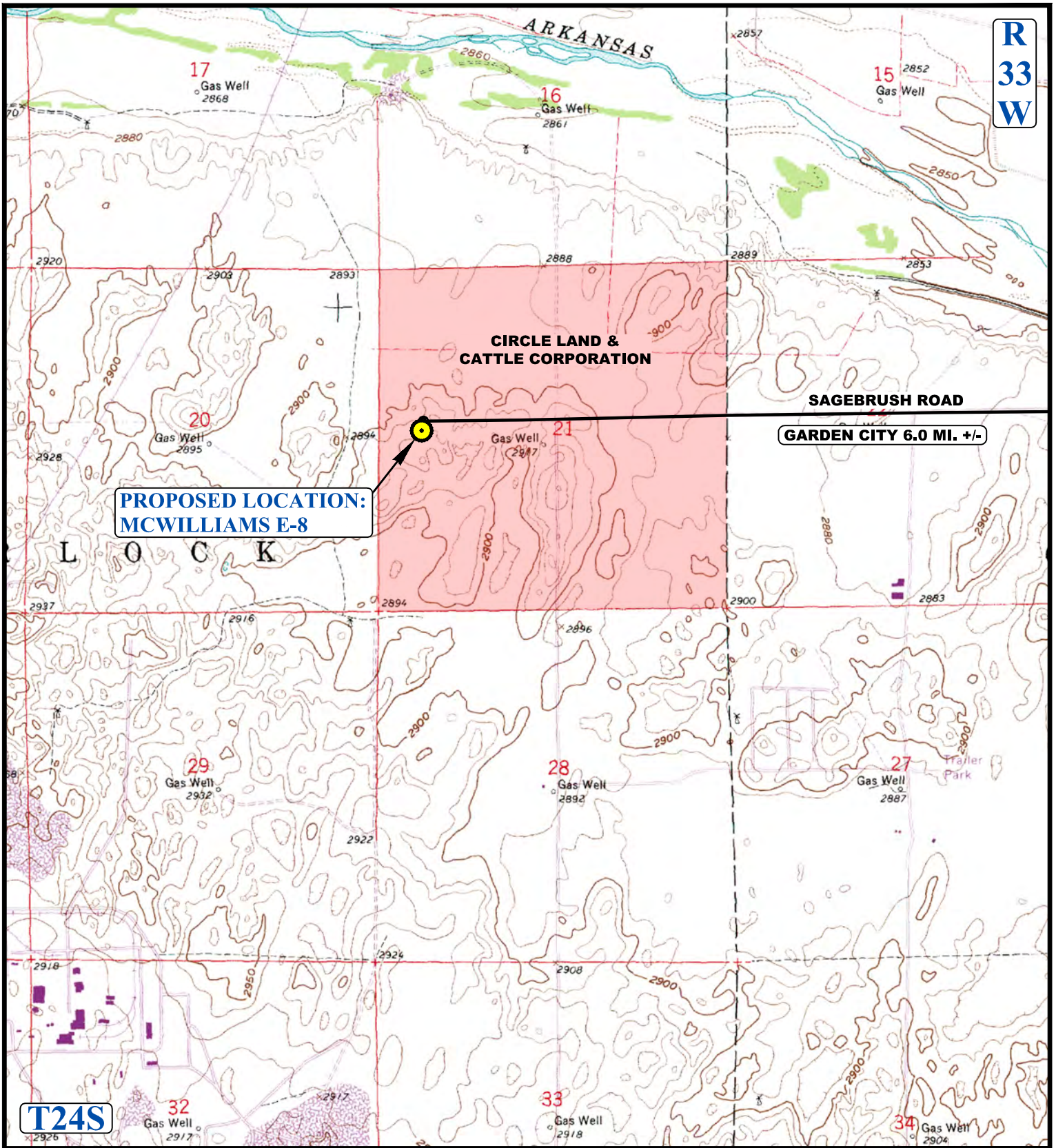
**MERIT ENERGY COMPANY**

**MCWILLIAMS E-8**  
 2438' FNL 733' FWL  
 SW 1/4 NW 1/4, SECTION 21, T24S, R33W, 6th P.M.  
 FINNEY COUNTY, KANSAS



**UELS, LLC**  
 Corporate Office \* 85 South 200 East  
 Vernal, UT 84078 \* (435) 789-1017

SURVEYED BY	J.P.	08-09-19	SCALE
DRAWN BY	Z.T.	08-13-19	1 : 100,000
<b>ACCESS ROAD MAP</b>			<b>TOPO A</b>



**R  
33  
W**

**PROPOSED LOCATION:  
MCWILLIAMS E-8**

**CIRCLE LAND &  
CATTLE CORPORATION**

**SAGEBRUSH ROAD**

**GARDEN CITY 6.0 MI. +/-**

**T24S**

NOTE: PARCEL DATA SHOWN HAS BEEN OBTAINED FROM VARIOUS SOURCES AND SHOULD BE USED FOR MAPPING, GRAPHIC AND PLANNING PURPOSES ONLY. NO WARRANTY IS MADE BY UINTAH ENGINEERING AND LAND SURVEYING (UELS) FOR ACCURACY OF THE PARCEL DATA.

**LEGEND:**

— EXISTING ROAD



**MERIT ENERGY COMPANY**

**MCWILLIAMS E-8  
2438' FNL 733' FWL  
SW 1/4 NW 1/4, SECTION 21, T24S, R33W, 6th P.M.  
FINNEY COUNTY, KANSAS**

SURVEYED BY	J.P.	08-09-19	SCALE
DRAWN BY	Z.T.	08-13-19	1 : 24,000
<b>ACCESS ROAD MAP</b>			<b>TOPO B</b>



**UELS, LLC**  
Corporate Office \* 85 South 200 East  
Vernal, UT 84078 \* (435) 789-1017