

# JERRY GREEN

CONSULTING GEOLOGIST

4350 Keystone Rd  
HAYS, KS 67601  
PHONE: 785-625-5155

## GEOLOGIST'S REPORT

DRILLING TIME AND SAMPLE LOG

COMPANY CASTLE RESOURCES INC.

LEASE GEORG-LEGLITTER #1

FIELD WC.

LOCATION 2275FWL 1320FNL

SEC 9 TWP 17S RGE 19W

COUNTY RUSH STATE KS.

CONTRACTOR WHITE KNIGHT DRIG.

SPUD 8-16-19 COMP 8-22-19

RTD 3940' LTD 3940'

MUD UP 3200' TYPE MUD CHEM.

SAMPLES SAVED FROM 3200' TO TD.

DRILLING TIME KEPT FROM 3200' TO TD.

SAMPLES EXAMINED FROM 3200' TO TD.

GEOLOGICAL SUPERVISION FROM 3200' TO TD.

GEOLOGIST ON WELL

FORMATION TOPS	LOG	SAMPLES
ANHY.		
HEEBNER	3446-1317	3446-1317
LKC.	3492-1363	3491-1362
BKC.	3752-1623	3751-1622
CONGL. SS.	3864-1735	3864-1735
ARBUCLE	3878-1749	3878-1749
RTD.	3940-1811	3940-1811

ELEVATIONS  
KB 2129'  
DF

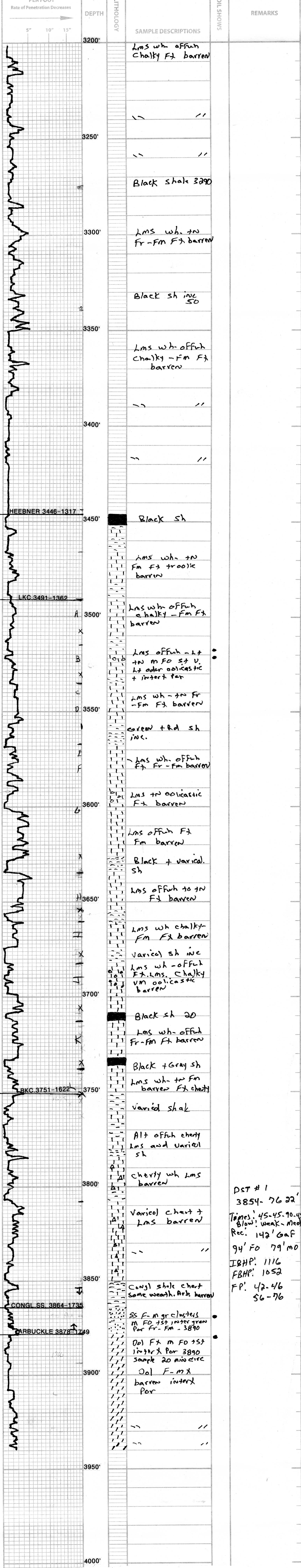
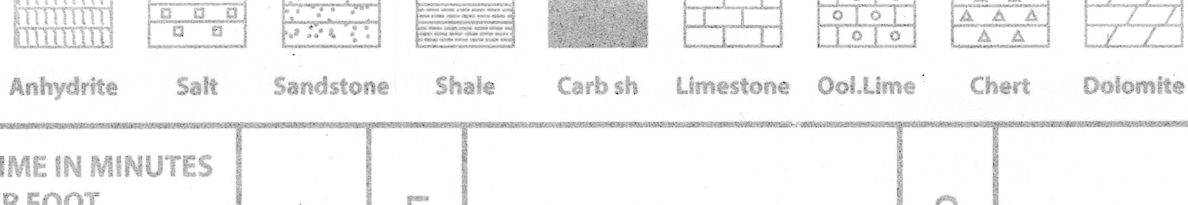
GL 2124'  
Measurements Are All From KB.

CASING @ 231' SURFACE PRODUCTION

ELECTRICAL SURVEYS STACK-MICRO

REMARKS: All parties involved recommended that pipe be set to test this well. The conglomerate sand is 25 higher than the Murfin well 3/8ths mile southwest. The ss thins over structure losing quality. Marine sands coarsen upwards. respectfully submitted

### LEGEND



DST # 1  
3854- 76.22'  
Times: 45-45.90.45  
Blow: weak-Med  
Rec: 142' GAF  
94' FO 79' MO  
IBHP: 1116  
FBHP: 1052  
FP: 42-46  
56-76