

KANSAS CORPORATION COMMISSION  
OIL & GAS CONSERVATION DIVISION

TEMPORARY ABANDONMENT WELL APPLICATION

OPERATOR: License# \_\_\_\_\_  
 Name: \_\_\_\_\_  
 Address 1: \_\_\_\_\_  
 Address 2: \_\_\_\_\_  
 City: \_\_\_\_\_ State: \_\_\_\_\_ Zip: \_\_\_\_\_ + \_\_\_\_\_  
 Contact Person: \_\_\_\_\_  
 Phone: ( \_\_\_\_\_ ) \_\_\_\_\_  
 Contact Person Email: \_\_\_\_\_  
 Field Contact Person: \_\_\_\_\_  
 Field Contact Person Phone: ( \_\_\_\_\_ ) \_\_\_\_\_

API No. 15- \_\_\_\_\_  
 Spot Description: \_\_\_\_\_  
 \_\_\_\_\_ - \_\_\_\_\_ - \_\_\_\_\_ - \_\_\_\_\_ Sec. \_\_\_\_\_ Twp. \_\_\_\_\_ S. R. \_\_\_\_\_  E  W  
 \_\_\_\_\_ feet from  N /  S Line of Section  
 \_\_\_\_\_ feet from  E /  W Line of Section  
 GPS Location: Lat: \_\_\_\_\_, Long: \_\_\_\_\_  
(e.g. xx.xxxxx) (e.g. -xxx.xxxxx)  
 Datum:  NAD27  NAD83  WGS84  
 County: \_\_\_\_\_ Elevation: \_\_\_\_\_  GL  KB  
 Lease Name: \_\_\_\_\_ Well #: \_\_\_\_\_  
 Well Type: (check one)  Oil  Gas  OG  WSW  Other: \_\_\_\_\_  
 SWD Permit #: \_\_\_\_\_  ENHR Permit #: \_\_\_\_\_  
 Gas Storage Permit #: \_\_\_\_\_  
 Spud Date: \_\_\_\_\_ Date Shut-In: \_\_\_\_\_

	Conductor	Surface	Production	Intermediate	Liner	Tubing
Size						
Setting Depth						
Amount of Cement						
Top of Cement						
Bottom of Cement						

Casing Fluid Level from Surface: \_\_\_\_\_ How Determined? \_\_\_\_\_ Date: \_\_\_\_\_  
 Casing Squeeze(s): \_\_\_\_\_ to \_\_\_\_\_ w / \_\_\_\_\_ sacks of cement, \_\_\_\_\_ to \_\_\_\_\_ w / \_\_\_\_\_ sacks of cement. Date: \_\_\_\_\_  
(top) (bottom) (top) (bottom)  
 Do you have a valid Oil & Gas Lease?  Yes  No  
 Depth and Type:  Junk in Hole at \_\_\_\_\_  Tools in Hole at \_\_\_\_\_ Casing Leaks:  Yes  No Depth of casing leak(s): \_\_\_\_\_  
(depth) (depth)  
 Type Completion:  ALT. I  ALT. II Depth of:  DV Tool: \_\_\_\_\_ w / \_\_\_\_\_ sacks of cement  Port Collar: \_\_\_\_\_ w / \_\_\_\_\_ sack of cement  
(depth) (depth)  
 Packer Type: \_\_\_\_\_ Size: \_\_\_\_\_ Inch Set at: \_\_\_\_\_ Feet  
 Total Depth: \_\_\_\_\_ Plug Back Depth: \_\_\_\_\_ Plug Back Method: \_\_\_\_\_

**Geological Data:**

Formation Name	Formation Top	Formation Base	Completion Information
1. _____	At: _____	to _____ Feet	Perforation Interval _____ to _____ Feet or Open Hole Interval _____ to _____ Feet
2. _____	At: _____	to _____ Feet	Perforation Interval _____ to _____ Feet or Open Hole Interval _____ to _____ Feet

UNDER PENALTY OF PERJURY I HEREBY ATTEST THAT THE INFORMATION CONTAINED HEREIN IS TRUE AND CORRECT TO THE BEST OF MY KNOWLEDGE

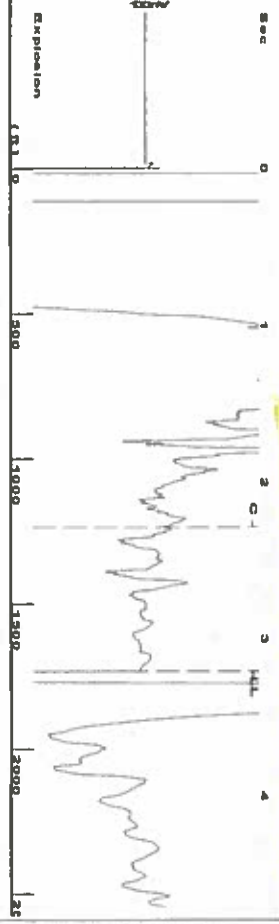
Submitted Electronically

<b>Do NOT Write in This Space - KCC USE ONLY</b>	Date Tested: _____	Results: _____	Date Plugged: _____	Date Repaired: _____	Date Put Back in Service: _____
	Review Completed by: _____ Comments: _____				
TA Approved: <input type="checkbox"/> Yes <input type="checkbox"/> Denied Date: _____					

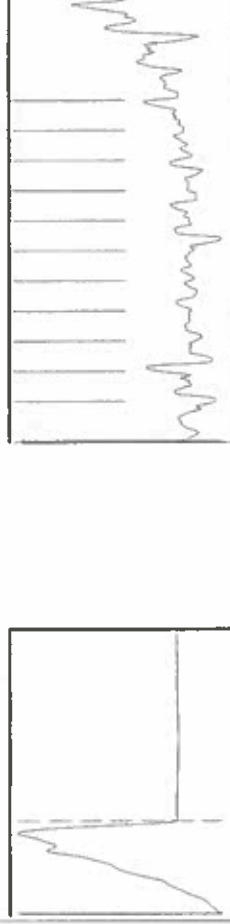
Mail to the Appropriate KCC Conservation Office:

	KCC District Office #1 - 210 E. Frontview, Suite A, Dodge City, KS 67801	Phone 620.682.7933
	KCC District Office #2 - 3450 N. Rock Road, Building 600, Suite 601, Wichita, KS 67226	Phone 316.337.7400
	KCC District Office #3 - 137 E. 21st St., Chanute, KS 66720	Phone 620.902.6450
	KCC District Office #4 - 2301 E. 13th Street, Hays, KS 67601-2651	Phone 785.261.6250

Group: Merit Energy Company-Ulysses Well: Amanda Jill 1-36 (acquired on: 08/22/19 10:34:53)



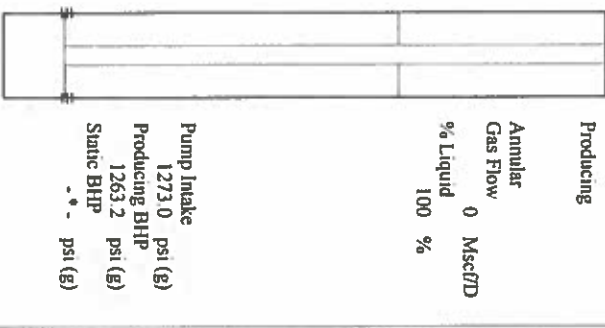
Filter Type High Pass Automatic Collar Count Yes  
 Manual Acoustic Velo 0.25 89 ft/s Manual JTS/sec 16.1812  
 Time 3.206 sec  
 Joints 54 6477 J/s  
 Depth 1732.33 ft



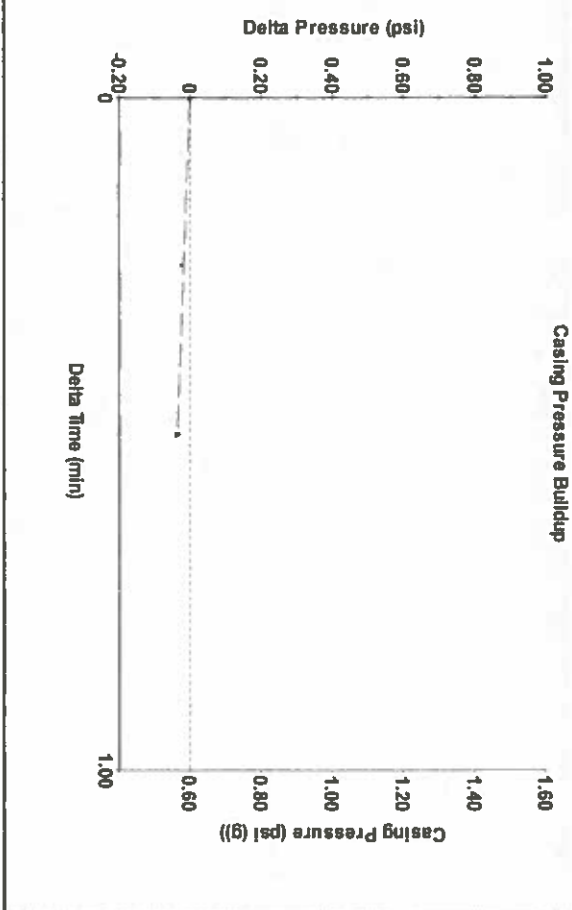
Group: Merit Energy Company-Ulysses Well: Amanda Jill 1-36 (acquired on: 08/22/19 10:34:53)

Production	Potential	Casing Pressure	Producing
Current	BBL/D	0.6 psi (g)	Annular Gas Flow
Oil	BBL/D	-0.035 psi	0 MascTD
Water	MascTD	0.50 min	% Liquid
Gas		Gas/Liquid Interface Pressure	100 %
IPR Method	Vogel	1.4 psi (g)	
PBHP/SBHP			
Production Efficiency	0.0		
		Liquid Level Depth	
		1732.33 ft	
Oil 40 deg API			
Water 1.05 Sp.Gr.H2O		Pump Intake Depth	
Gas 0.89 Sp.Gr.AIR		5673.00 ft	
Acoustic Velocity	1080.68 ft/s	Formation Depth	
		5640.00 ft	

Formation Submergence 3941 ft  
 Total Gaseous Liquid Column HT (TVD) 3941 ft  
 Equivalent Gas Free Liquid HT (TVD) 3941 ft  
 Acoustic Test  
 Tim Frydendall-Fluid Level Technician

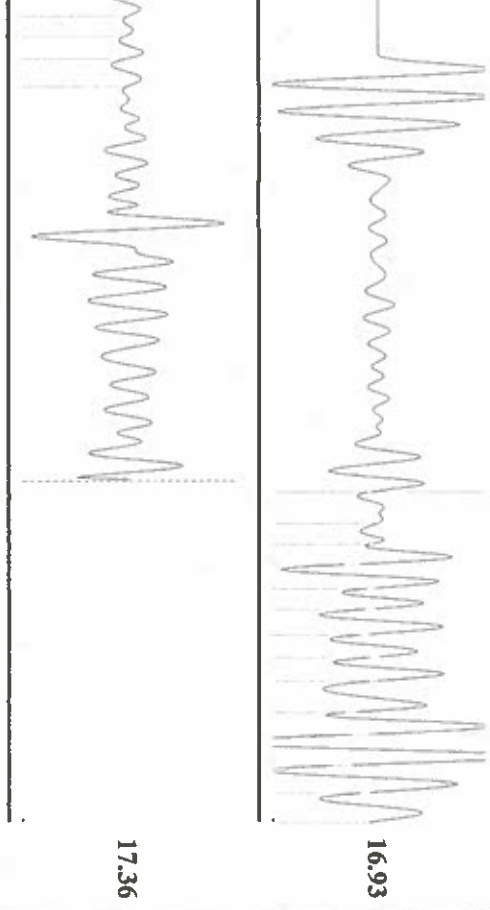


Group: Merit Energy Company-Ulysses Well: Amanda Jill 1-36 (acquired on: 08/22/19 10:34:53)



Change in Pressure -0.04 psi PT9522 Range  
 Change in Time 0.50 min 0 - ? psi

Group: Merit Energy Company-Ulysses Well: Amanda Jill 1-36 (acquired on: 08/22/19 10:34:53)



Acoustic Velocity	1080.68 ft/s	Joints counted	18
Joints Per Second	17.0455 jts/sec	Joints to liquid level	54.6477
Depth to liquid level	1732.33 ft	Filter Width	14.1812
Automatic Collar Count	Yes	Time to 1st Collar	1.232

September 03, 2019

Katherine McClurkan  
Merit Energy Company, LLC  
446 South Road M  
Dallas, TX 75240

Re: Temporary Abandonment  
API 15-187-20852-00-02  
Amanda Jill 1-36  
NW/4 Sec.36-29S-40W  
Stanton County, Kansas

Dear Katherine McClurkan:

"Your temporary abandonment (TA) application for the well listed above has been approved. In accordance with K.A.R. 82-3-111 the TA status of this well will expire 09/03/2020.

- \* If you return this well to service or plug it, please notify the District Office.
- \* If you sell this well you are required to file a Transfer of Operator form, T-1.
- \* If the well will remain temporarily abandoned, you must submit a new TA application, CP-111, before 09/03/2020.

You may contact me at the number above if you have questions.

Very truly yours,

Michael Maier"