

KANSAS CORPORATION COMMISSION
OIL & GAS CONSERVATION DIVISION

TEMPORARY ABANDONMENT WELL APPLICATION

OPERATOR: License#
Name:
Address 1:
Address 2:
City: State: Zip:
Contact Person:
Phone:
Contact Person Email:
Field Contact Person:
Field Contact Person Phone:

API No. 15-
Spot Description:
Sec. Twp. S. R.
feet from N / S Line of Section
feet from E / W Line of Section
GPS Location: Lat: , Long:
Datum: NAD27 NAD83 WGS84
County: Elevation: GL KB
Lease Name: Well #:
Well Type: Oil Gas OG WSW Other:
SWD Permit #: ENHR Permit #:
Gas Storage Permit #:
Spud Date: Date Shut-In:

Table with 7 columns: Conductor, Surface, Production, Intermediate, Liner, Tubing. Rows include Size, Setting Depth, Amount of Cement, Top of Cement, Bottom of Cement.

Casing Fluid Level from Surface: How Determined? Date:
Casing Squeeze(s): to w / sacks of cement, to w / sacks of cement. Date:
Do you have a valid Oil & Gas Lease? Yes No
Depth and Type: Junk in Hole at Tools in Hole at Casing Leaks: Yes No Depth of casing leak(s):
Type Completion: ALT. I ALT. II Depth of: DV Tool: w / sacks of cement Port Collar: w / sack of cement
Packer Type: Size: Inch Set at: Feet
Total Depth: Plug Back Depth: Plug Back Method:

Geological Date:

Table with 2 columns: Formation Name, Completion Information. Rows 1 and 2 for formation details.

UNDER PENALTY OF PERJURY I HEREBY ATTEST THAT THE INFORMATION CONTAINED HEREIN IS TRUE AND CORRECT TO THE BEST OF MY KNOWLEDGE

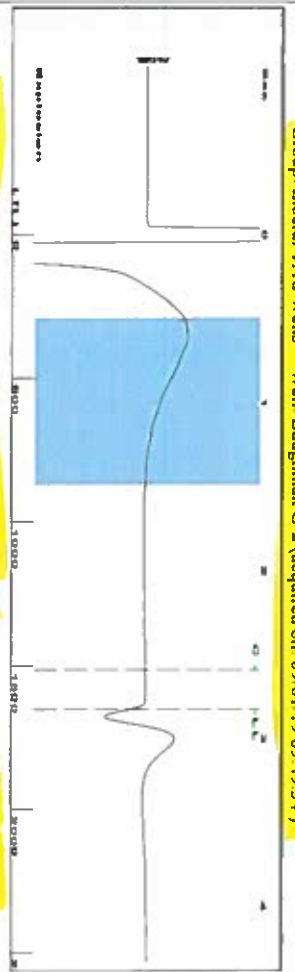
Submitted Electronically

Form with fields: Do NOT Write in This Space - KCC USE ONLY, Date Tested, Results, Date Plugged, Date Repaired, Date Put Back in Service, Review Completed by, Comments, TA Approved: Yes Denied, Date.

Mail to the Appropriate KCC Conservation Office:

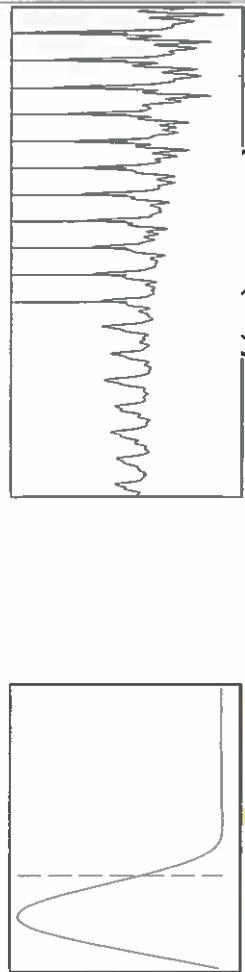
Table with 2 columns: Office Address, Phone. Rows for KCC District Office #1, #2, #3, #4.

Group: Liberal TAD Wells Well: Baughman G-2 (acquired on: 09/01/19 09:49:54)



Filter Type High Pass
Manual Acoustic Vel 156.93 ft/s
Automatic Collar Count 182482
Manual JTS/sec 182482
Time 2.826 sec
Joints 52.1089 Jts
Depth 1651.85 ft

0.5 to 1.5 (Sec)



Analysis Method: Automatic

Group: Liberal TAD Wells Well: Baughman G-2 (acquired on: 09/01/19 09:49:54)

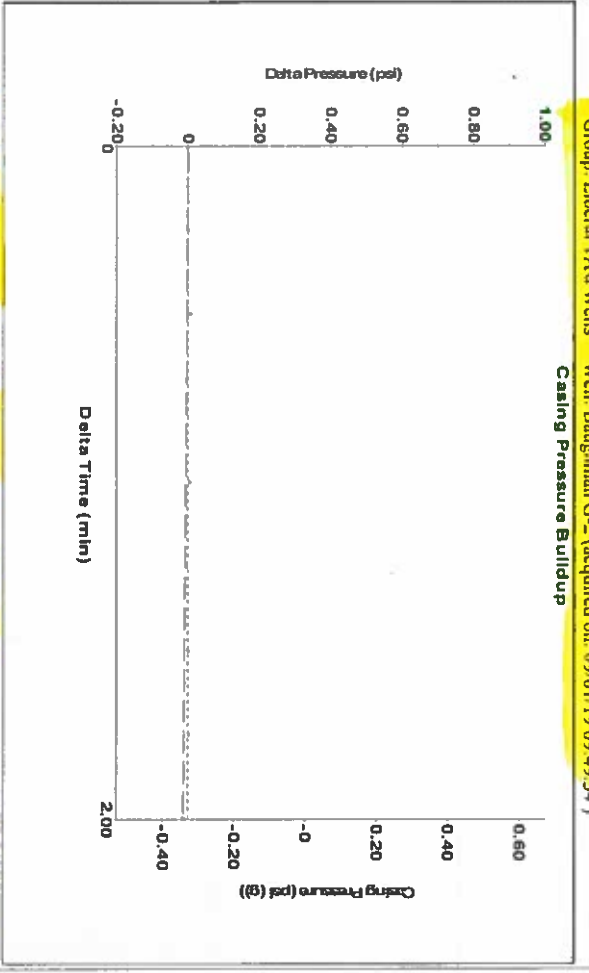
Production	Current	Potential	Casing Pressure	Static
Oil	Oil	BBLD	-0.3 psi (g)	Oil Column Height
Water	Water	BBLD	-0.012 psi	MD 0 ft
Gas	Gas	Misc/D	2.00 min	Water Column Height
		Vogel	Gas/Liquid Interface Pressure	MD 5165 ft
		Production Efficiency	0.4	
			Liquid Level Depth	
			1651.85 ft	
			Pump Intake Depth	
			6301.00 ft	
			Formation Depth	
			6827.00 ft	
			Acoustic Velocity	
			1169.04 ft/s	



Static BHP 2348.7 psi (g)

Group: Liberal TAD Wells Well: Baughman G-2 (acquired on: 09/01/19 09:49:54)

Casing Pressure Buildup



Change in Pressure -0.01 psi
Change in Time 2.00 min
PT11249 Range
0 - ? psi

Group: Liberal TAD Wells Well: Baughman G-2 (acquired on: 09/01/19 09:49:54)



Acoustic Velocity 1169.04 ft/s
Joints Per Second 18.4391 Jts/Sec
Depth to liquid level 1651.85 ft
Automatic Collar Count Yes
Joints counted 43
Joints to liquid level 52.1089
Filter Width 162482
Time to 1st Collar 20.2482

18.75

18.32

September 10, 2019

Katherine McClurkan
Merit Energy Company, LLC
13727 Noel Road, Suite 1200
Dallas, TX 75240

Re: Temporary Abandonment
API 15-189-20876-00-00
Baughman G 2
NW/4 Sec.19-34S-35W
Stevens County, Kansas

Dear Katherine McClurkan:

"Your temporary abandonment (TA) application for the well listed above has been approved. In accordance with K.A.R. 82-3-111 the TA status of this well will expire 09/10/2020.

- * If you return this well to service or plug it, please notify the District Office.
- * If you sell this well you are required to file a Transfer of Operator form, T-1.
- * If the well will remain temporarily abandoned, you must submit a new TA application, CP-111, before 09/10/2020.

You may contact me at the number above if you have questions.

Very truly yours,

Michael Maier"