

KANSAS CORPORATION COMMISSION
OIL & GAS CONSERVATION DIVISION

Form must be Typed
Form must be signed

TEMPORARY ABANDONMENT WELL APPLICATION

All blanks must be complete

OPERATOR: License#
Name:
Address 1:
Address 2:
City: State: Zip:
Contact Person:
Phone:
Contact Person Email:
Field Contact Person:
Field Contact Person Phone:

API No. 15-
Spot Description:
Sec. Twp. S. R.
feet from N / S Line of Section
feet from E / W Line of Section
GPS Location: Lat: , Long:
Datum: NAD27 NAD83 WGS84
County: Elevation: GL KB
Lease Name: Well #:
Well Type: (check one) Oil Gas OG WSW Other:
SWD Permit #: ENHR Permit #:
Gas Storage Permit #:
Spud Date: Date Shut-In:

Table with 7 columns: Conductor, Surface, Production, Intermediate, Liner, Tubing. Rows include Size, Setting Depth, Amount of Cement, Top of Cement, Bottom of Cement.

Casing Fluid Level from Surface: How Determined? Date:
Casing Squeeze(s): to w / sacks of cement, to w / sacks of cement. Date:
Do you have a valid Oil & Gas Lease? Yes No
Depth and Type: Junk in Hole at Tools in Hole at Casing Leaks: Yes No Depth of casing leak(s):
Type Completion: ALT. I ALT. II Depth of: DV Tool: w / sacks of cement Port Collar: w / sack of cement
Packer Type: Size: Inch Set at: Feet
Total Depth: Plug Back Depth: Plug Back Method:

Geological Data:

Table with 4 columns: Formation Name, Formation Top, Formation Base, Completion Information. Rows 1 and 2.

UNDER PENALTY OF PERJURY I HEREBY ATTEST THAT THE INFORMATION CONTAINED HEREIN IS TRUE AND CORRECT TO THE BEST OF MY KNOWLEDGE

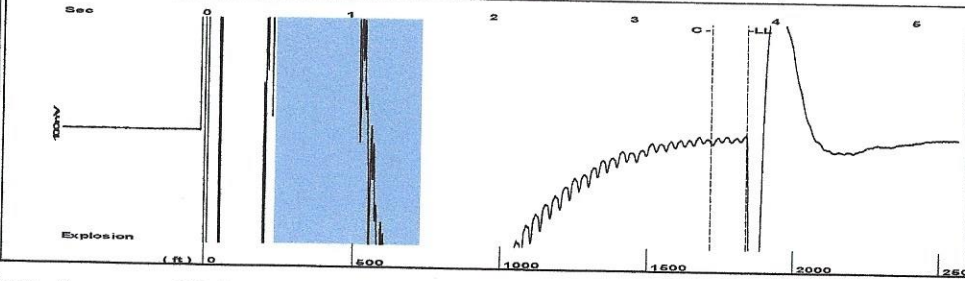
Submitted Electronically

Do NOT Write in This Space - KCC USE ONLY
Date Tested: Results: Date Plugged: Date Repaired: Date Put Back in Service:
Review Completed by: Comments:
TA Approved: Yes Denied Date:

Mail to the Appropriate KCC Conservation Office:

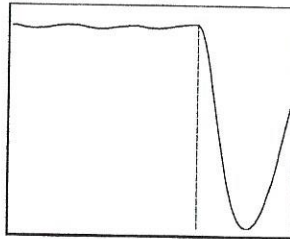
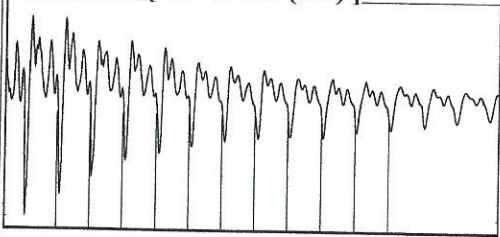
Table with 2 columns: Office Address, Phone. Rows for District Office #1, #2, #3, #4.

Group: Olmitz Area Well: Menzer 1-22 (acquired on: 09/06/19 11:53:35)



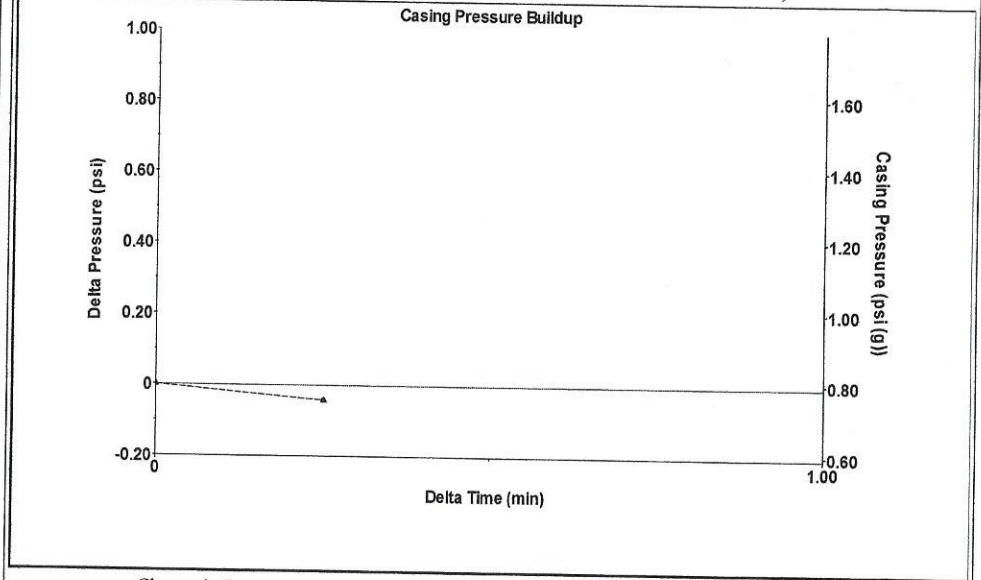
Filter Type High Pass Automatic Collar Count Yes Time 3.805 sec
 Manual Acoustic Velo970.623 ft/s Manual JTS/sec 14.8368 Joints 56.1624 Jts
 Depth 1837.07 ft

[0.5 to 1.5 (Sec)]



Analysis Method: Automatic

Group: Olmitz Area Well: Menzer 1-22 (acquired on: 09/06/19 11:53:35)

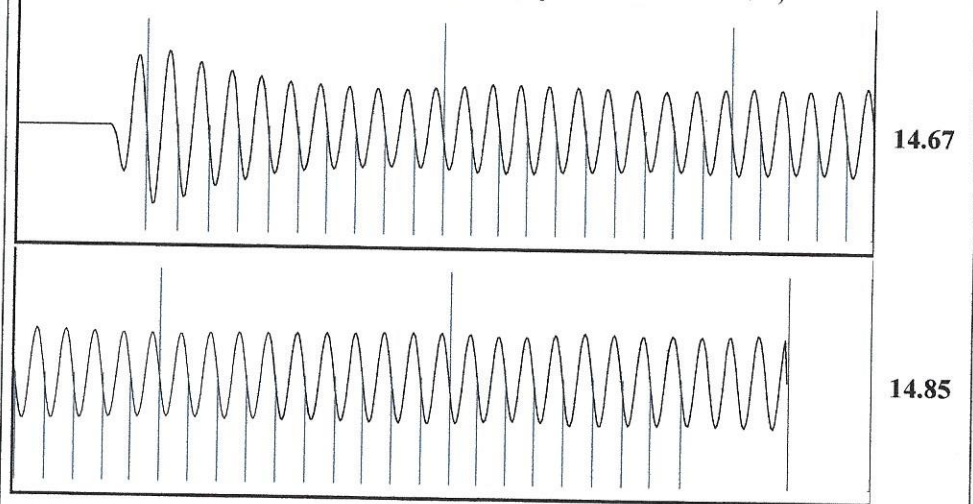


Change in Pressure -0.04 psi PT13440
 Change in Time 0.25 min Range 0 - ? psi

Group: Olmitz Area Well: Menzer 1-22 (acquired on: 09/06/19 11:53:35)

Production Current	Potential	Casing Pressure	Producing
Oil -*- BBL/D	-* BBL/D	0.8 psi (g)	Annular Gas Flow
Water -*- BBL/D	-* BBL/D	Casing Pressure Buildup	0 Mscf/D
Gas -*- Mscf/D	-* Mscf/D	-0.0 psi	% Liquid
		0.25 min	100 %
IPR Method	Vogel	Gas/Liquid Interface Pressure	
PBHP/SBHP	-*-	1.8 psi (g)	
Production Efficiency	0.0		
Oil 40 deg.API		Liquid Level Depth	
Water 1.05 Sp.Gr.H2O		1837.07 ft	
Gas 1.01 Sp.Gr.AIR		Pump Intake Depth	
		3500.00 ft	
Acoustic Velocity	965.609 ft/s	Formation Depth	
		3465.00 ft	
Formation Submergence		Pump Intake	
Total Gaseous Liquid Column HT (TVD)	1663 ft	560.5 psi (g)	
Equivalent Gas Free Liquid HT (TVD)	1663 ft	Producing BHP	
Acoustic Test		549.2 psi (g)	
		Static BHP	
		-*- psi (g)	

Group: Olmitz Area Well: Menzer 1-22 (acquired on: 09/06/19 11:53:35)



Acoustic Velocity 965.609 ft/s Joints counted 48
 Joints Per Second 14.7601 jts/sec Joints to liquid level 56.1624
 Depth to liquid level 1837.07 ft Filter Width 12.8368 16.8368
 Automatic Collar Count Yes Time to 1st Collar 0.3 3.552

September 16, 2019

Loveness Mpanje
F. G. Holl Company L.L.C.
9431 E CENTRAL STE 100
WICHITA, KS 67206-2563

Re: Temporary Abandonment
API 15-009-25800-00-01
MENZER "OWWO" 1-22
SE/4 Sec.22-17S-15W
Barton County, Kansas

Dear Loveness Mpanje:

"Your temporary abandonment (TA) application for the well listed above has been approved. In accordance with K.A.R. 82-3-111 the TA status of this well will expire 09/16/2020.

- * If you return this well to service or plug it, please notify the District Office.
- * If you sell this well you are required to file a Transfer of Operator form, T-1.
- * If the well will remain temporarily abandoned, you must submit a new TA application, CP-111, before 09/16/2020.

You may contact me at the number above if you have questions.

Very truly yours,

RICHARD WILLIAMS "