

KANSAS CORPORATION COMMISSION
OIL & GAS CONSERVATION DIVISION

Form must be Typed
Form must be signed

TEMPORARY ABANDONMENT WELL APPLICATION

All blanks must be complete

OPERATOR: License#
Name:
Address 1:
Address 2:
City: State: Zip:
Contact Person:
Phone:
Contact Person Email:
Field Contact Person:
Field Contact Person Phone:

API No. 15-
Spot Description:
Sec. Twp. S. R.
GPS Location: Lat: Long:
Datum: NAD27 NAD83 WGS84
County: Elevation:
Lease Name: Well #:
Well Type: Oil Gas OG WSW Other:
SWD Permit #: ENHR Permit #:
Gas Storage Permit #:
Spud Date: Date Shut-In:

Table with 7 columns: Conductor, Surface, Production, Intermediate, Liner, Tubing. Rows include Size, Setting Depth, Amount of Cement, Top of Cement, Bottom of Cement.

Casing Fluid Level from Surface: How Determined? Date:
Casing Squeeze(s): to w / sacks of cement, to w / sacks of cement. Date:
Do you have a valid Oil & Gas Lease? Yes No
Depth and Type: Junk in Hole at Tools in Hole at Casing Leaks: Yes No Depth of casing leak(s):
Type Completion: ALT. I ALT. II Depth of: DV Tool: w / sacks of cement Port Collar: w / sack of cement
Packer Type: Size: Inch Set at: Feet
Total Depth: Plug Back Depth: Plug Back Method:

Geological Data:

Table with 4 columns: Formation Name, Formation Top, Formation Base, Completion Information. Rows 1 and 2.

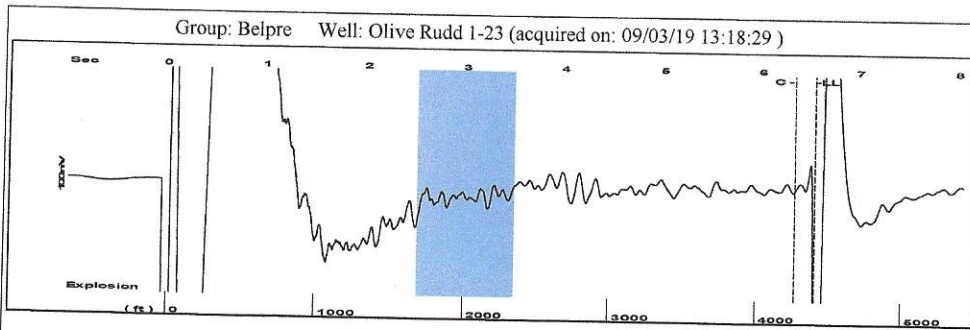
UNDER PENALTY OF PERJURY I HEREBY ATTEST THAT THE INFORMATION CONTAINED HEREIN IS TRUE AND CORRECT TO THE BEST OF MY KNOWLEDGE

Submitted Electronically

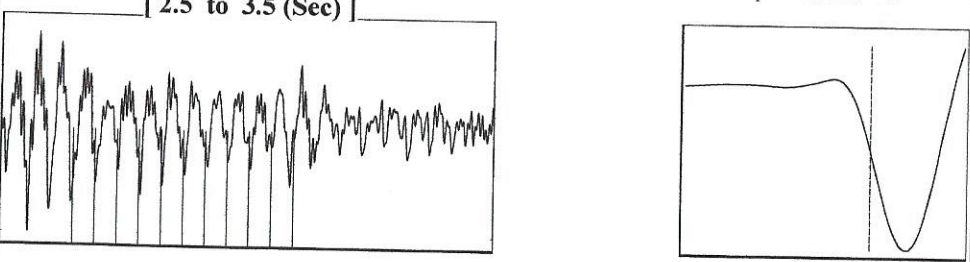
Do NOT Write in This Space - KCC USE ONLY
Date Tested: Results: Date Plugged: Date Repaired: Date Put Back in Service:
Review Completed by: Comments:
TA Approved: Yes Denied Date:

Mail to the Appropriate KCC Conservation Office:

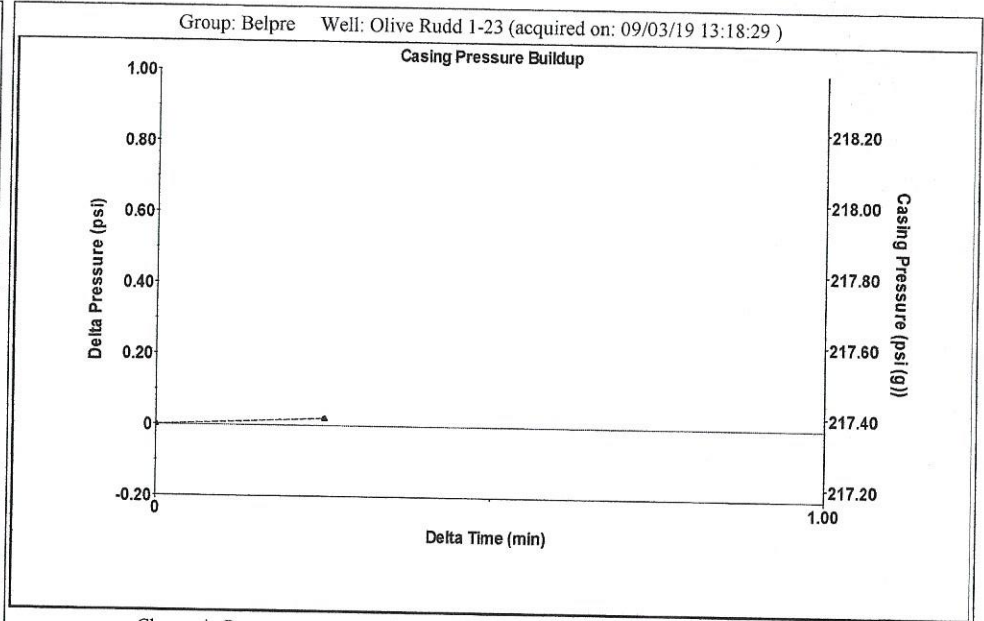
Table with 3 columns: District Office, Address, Phone. Rows for District Office #1, #2, #3, #4.



Filter Type High Pass Automatic Collar Count Yes Time 6.545 sec  
 Manual Acoustic Velo 1345.78 ft/s Manual JTS/sec 22.2222 Joints 145.612 Jts  
 Depth 4409.14 ft



Analysis Method: Automatic



Change in Pressure 0.02 psi PT13440  
 Range 0 - ? psi  
 Change in Time 0.25 min

Group: Belpre Well: Olive Rudd 1-23 (acquired on: 09/03/19 13:18:29)

Production Current	Potential	Casing Pressure	Producing
Oil - *-	- *- BBL/D	217.4 psi (g)	Annular Gas Flow
Water - *-	- *- BBL/D	Casing Pressure Buildup	2 Mscf/D
Gas - *-	- *- Mscf/D	0.0 psi	% Liquid
		0.25 min	100 %
IPR Method	Vogel	Gas/Liquid Interface Pressure	
PBHP/SBHP	- *-	241.2 psi (g)	
Production Efficiency	0.0		
Oil 40 deg.API		Liquid Level Depth	
Water 1.05 Sp.Gr.H2O		4409.14 ft	
Gas 0.65 Sp.Gr.AIR		Pump Intake Depth	
		4421.00 ft	
Acoustic Velocity 1347.33 ft/s		Formation Depth	
		4316.00 ft	
Formation Submergence		Pump Intake	
Total Gaseous Liquid Column HT (TVD)	12 ft	245.1 psi (g)	
Equivalent Gas Free Liquid HT (TVD)	12 ft	Producing BHP	
		240.7 psi (g)	
Acoustic Test		Static BHP	
		- *- psi (g)	

Group: Belpre Well: Olive Rudd 1-23 (acquired on: 09/03/19 13:18:29)

Acoustic Velocity	1347.33 ft/s	Joints counted	135
Joints Per Second	22.2479 jts/sec	Joints to liquid level	145.612
Depth to liquid level	4409.14 ft	Filter Width	20.2222 24.2222
Automatic Collar Count	Yes	Time to 1st Collar	0.272 6.34

September 17, 2019

Loveness Mpanje  
F. G. Holl Company L.L.C.  
9431 E CENTRAL STE 100  
WICHITA, KS 67206-2563

Re: Temporary Abandonment  
API 15-047-20623-00-00  
OLIVE RUDD 1-23  
SW/4 Sec.23-24S-17W  
Edwards County, Kansas

Dear Loveness Mpanje:

"Your temporary abandonment (TA) application for the well listed above has been approved. In accordance with K.A.R. 82-3-111 the TA status of this well will expire 09/17/2020.

- \* If you return this well to service or plug it, please notify the District Office.
- \* If you sell this well you are required to file a Transfer of Operator form, T-1.
- \* If the well will remain temporarily abandoned, you must submit a new TA application, CP-111, before 09/17/2020.

You may contact me at the number above if you have questions.

Very truly yours,

Michael Maier"