

KANSAS CORPORATION COMMISSION  
OIL & GAS CONSERVATION DIVISION

TEMPORARY ABANDONMENT WELL APPLICATION

OPERATOR: License# \_\_\_\_\_  
 Name: \_\_\_\_\_  
 Address 1: \_\_\_\_\_  
 Address 2: \_\_\_\_\_  
 City: \_\_\_\_\_ State: \_\_\_\_\_ Zip: \_\_\_\_\_ + \_\_\_\_\_  
 Contact Person: \_\_\_\_\_  
 Phone: ( \_\_\_\_\_ ) \_\_\_\_\_  
 Contact Person Email: \_\_\_\_\_  
 Field Contact Person: \_\_\_\_\_  
 Field Contact Person Phone: ( \_\_\_\_\_ ) \_\_\_\_\_

API No. 15- \_\_\_\_\_  
 Spot Description: \_\_\_\_\_  
 \_\_\_\_\_ - \_\_\_\_\_ - \_\_\_\_\_ - \_\_\_\_\_ Sec. \_\_\_\_\_ Twp. \_\_\_\_\_ S. R. \_\_\_\_\_  E  W  
 \_\_\_\_\_ feet from  N /  S Line of Section  
 \_\_\_\_\_ feet from  E /  W Line of Section  
 GPS Location: Lat: \_\_\_\_\_, Long: \_\_\_\_\_  
(e.g. xx.xxxxx) (e.g. -xxx.xxxxx)  
 Datum:  NAD27  NAD83  WGS84  
 County: \_\_\_\_\_ Elevation: \_\_\_\_\_  GL  KB  
 Lease Name: \_\_\_\_\_ Well #: \_\_\_\_\_  
 Well Type: (check one)  Oil  Gas  OG  WSW  Other: \_\_\_\_\_  
 SWD Permit #: \_\_\_\_\_  ENHR Permit #: \_\_\_\_\_  
 Gas Storage Permit #: \_\_\_\_\_  
 Spud Date: \_\_\_\_\_ Date Shut-In: \_\_\_\_\_

	Conductor	Surface	Production	Intermediate	Liner	Tubing
Size						
Setting Depth						
Amount of Cement						
Top of Cement						
Bottom of Cement						

Casing Fluid Level from Surface: \_\_\_\_\_ How Determined? \_\_\_\_\_ Date: \_\_\_\_\_  
 Casing Squeeze(s): \_\_\_\_\_ to \_\_\_\_\_ w / \_\_\_\_\_ sacks of cement, \_\_\_\_\_ to \_\_\_\_\_ w / \_\_\_\_\_ sacks of cement. Date: \_\_\_\_\_  
(top) (bottom) (top) (bottom)  
 Do you have a valid Oil & Gas Lease?  Yes  No  
 Depth and Type:  Junk in Hole at \_\_\_\_\_  Tools in Hole at \_\_\_\_\_ Casing Leaks:  Yes  No Depth of casing leak(s): \_\_\_\_\_  
(depth) (depth)  
 Type Completion:  ALT. I  ALT. II Depth of:  DV Tool: \_\_\_\_\_ w / \_\_\_\_\_ sacks of cement  Port Collar: \_\_\_\_\_ w / \_\_\_\_\_ sack of cement  
(depth) (depth)  
 Packer Type: \_\_\_\_\_ Size: \_\_\_\_\_ Inch Set at: \_\_\_\_\_ Feet  
 Total Depth: \_\_\_\_\_ Plug Back Depth: \_\_\_\_\_ Plug Back Method: \_\_\_\_\_

**Geological Data:**

Formation Name	Formation Top	Formation Base	Completion Information
1. _____	At: _____	to _____ Feet	Perforation Interval _____ to _____ Feet or Open Hole Interval _____ to _____ Feet
2. _____	At: _____	to _____ Feet	Perforation Interval _____ to _____ Feet or Open Hole Interval _____ to _____ Feet

UNDER PENALTY OF PERJURY I HEREBY ATTEST THAT THE INFORMATION CONTAINED HEREIN IS TRUE AND CORRECT TO THE BEST OF MY KNOWLEDGE

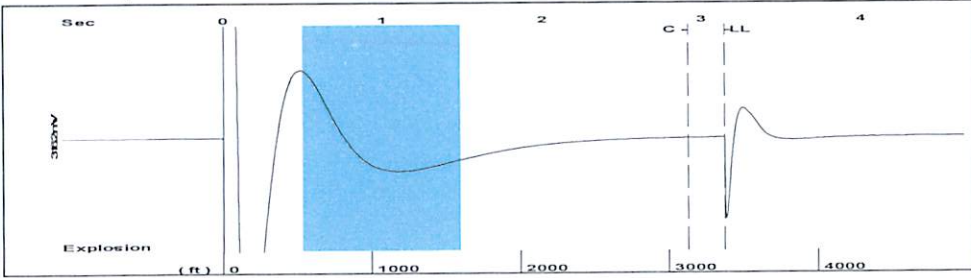
Submitted Electronically

<b>Do NOT Write in This Space - KCC USE ONLY</b>	Date Tested: _____	Results: _____	Date Plugged: _____	Date Repaired: _____	Date Put Back in Service: _____
	Review Completed by: _____ Comments: _____				
TA Approved: <input type="checkbox"/> Yes <input type="checkbox"/> Denied Date: _____					

Mail to the Appropriate KCC Conservation Office:

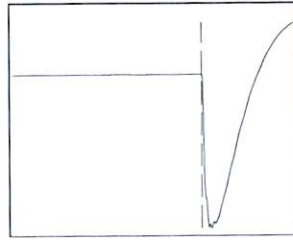
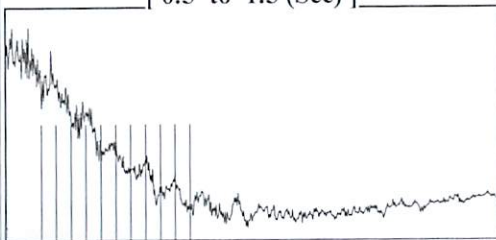
	KCC District Office #1 - 210 E. Frontview, Suite A, Dodge City, KS 67801	Phone 620.682.7933
	KCC District Office #2 - 3450 N. Rock Road, Building 600, Suite 601, Wichita, KS 67226	Phone 316.337.7400
	KCC District Office #3 - 137 E. 21st St., Chanute, KS 66720	Phone 620.902.6450
	KCC District Office #4 - 2301 E. 13th Street, Hays, KS 67601-2651	Phone 785.261.6250

Group: Northern Kansas District Well: MARSHALL A-41 (acquired on: 09/13/19 06:13:33 )



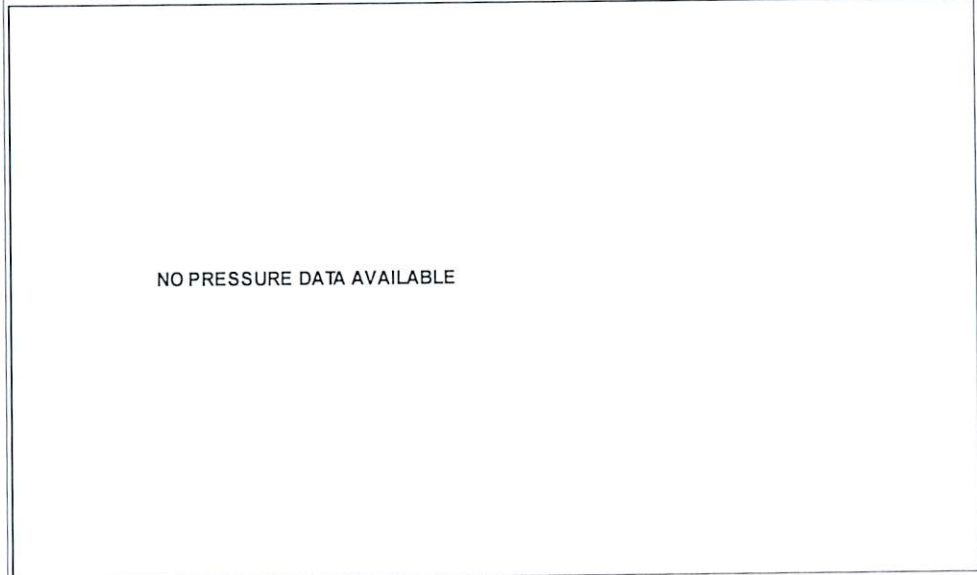
Filter Type High Pass Automatic Collar Count Yes Time 3.145 sec  
 Manual Acoustic Velocity 2086 ft/s Manual JTS/sec 33.3333 Joints 107.807 Jts  
 Depth 3373.29 ft

[ 0.5 to 1.5 (Sec) ]



Analysis Method: Automatic

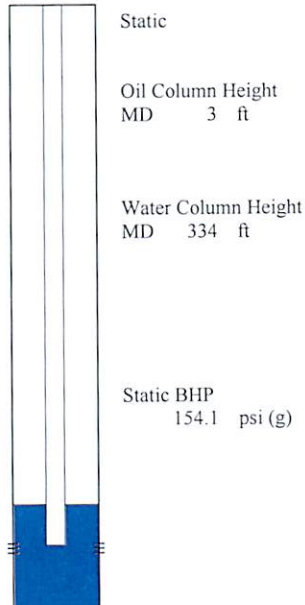
Group: Northern Kansas District Well: MARSHALL A-41 (acquired on: 09/13/19 06:13:33 )



Change in Pressure 0.00 psi PT 8139  
 Range 0 - ? psi  
 Change in Time 0.00 min

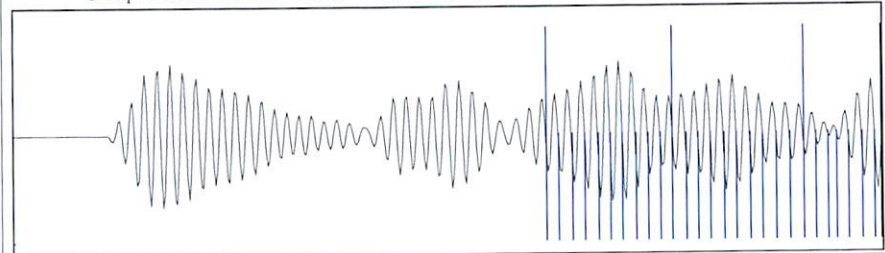
Group: Northern Kansas District Well: MARSHALL A-41 (acquired on: 09/13/19 06:13:33 )

Production Current	Potential	Casing Pressure
Oil 4	- * - BBL/D	0.0 psi (g)
Water 413.22	- * - BBL/D	Casing Pressure Buildup
Gas - * -	- * - Mscf/D	-0.028 psi
		0.50 min
IPR Method	Vogel	Gas/Liquid Interface Pressure
PBHP/SBHP	- * -	0.9 psi (g)
Production Efficiency	0.0	
Oil 40 deg.API		Liquid Level Depth
Water 1.05 Sp.Gr.H2O		3373.29 ft
Gas 0.55 Sp.Gr.AIR		Tubing Intake Depth
		3692.00 ft
Acoustic Velocity	2145.18 ft/s	Formation Depth
		3711.00 ft

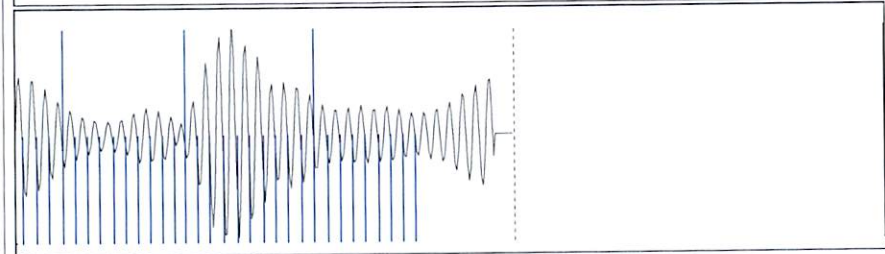


Acoustic Test

Group: Northern Kansas District Well: MARSHALL A-41 (acquired on: 09/13/19 06:13:33 )



34.21



34.33

Acoustic Velocity	2145.18 ft/s	Joints counted	58
Joints Per Second	34.279 jts/sec	Joints to liquid level	107.807
Depth to liquid level	3373.29 ft	Filter Width	31.3333
Automatic Collar Count	Yes	Time to 1st Collar	1.224
			2.916

September 19, 2019

Jerry Wirtz  
E & B Natural Resources Management Corp.  
2501 280TH AVE  
HAYS, KS 67601-9598

Re: Temporary Abandonment  
API 15-051-26384-00-00  
MARSHALL A 41  
SW/4 Sec.31-11S-17W  
Ellis County, Kansas

Dear Jerry Wirtz:

"Your temporary abandonment (TA) application for the well listed above has been approved. In accordance with K.A.R. 82-3-111 the TA status of this well will expire 09/19/2020.

- \* If you return this well to service or plug it, please notify the District Office.
- \* If you sell this well you are required to file a Transfer of Operator form, T-1.
- \* If the well will remain temporarily abandoned, you must submit a new TA application, CP-111, before 09/19/2020.

You may contact me at the number above if you have questions.

Very truly yours,

RICHARD WILLIAMS "