

KANSAS CORPORATION COMMISSION
OIL & GAS CONSERVATION DIVISION

TEMPORARY ABANDONMENT WELL APPLICATION

OPERATOR: License#
Name:
Address 1:
Address 2:
City: State: Zip:
Contact Person:
Phone:
Contact Person Email:
Field Contact Person:
Field Contact Person Phone:

API No. 15-
Spot Description:
Sec. Twp. S. R.
GPS Location: Lat, Long
Datum: NAD27, NAD83, WGS84
County: Elevation:
Lease Name: Well #:
Well Type: Oil, Gas, OG, WSW, Other
SWD Permit #: ENHR Permit #:
Gas Storage Permit #:
Spud Date: Date Shut-In:

Table with 7 columns: Conductor, Surface, Production, Intermediate, Liner, Tubing. Rows include Size, Setting Depth, Amount of Cement, Top of Cement, Bottom of Cement.

Casing Fluid Level from Surface: How Determined? Date:
Casing Squeeze(s): to w / sacks of cement, to w / sacks of cement. Date:
Do you have a valid Oil & Gas Lease? Yes No
Depth and Type: Junk in Hole at Tools in Hole at Casing Leaks: Yes No Depth of casing leak(s):
Type Completion: ALT. I ALT. II Depth of: DV Tool: w / sacks of cement Port Collar: w / sack of cement
Packer Type: Size: Inch Set at: Feet
Total Depth: Plug Back Depth: Plug Back Method:

Geological Date:

Table with 4 columns: Formation Name, Formation Top, Formation Base, Completion Information. Rows 1 and 2.

UNDER PENALTY OF PERJURY I HEREBY ATTEST THAT THE INFORMATION CONTAINED HEREIN IS TRUE AND CORRECT TO THE BEST OF MY KNOWLEDGE

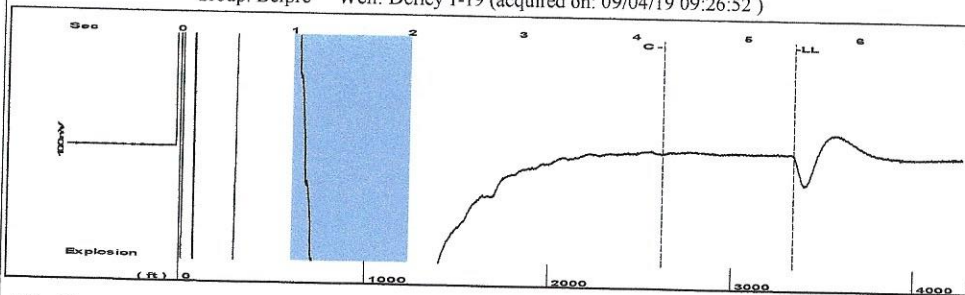
Submitted Electronically

Form with fields: Do NOT Write in This Space - KCC USE ONLY, Date Tested, Results, Date Plugged, Date Repaired, Date Put Back in Service, Review Completed by, Comments, TA Approved: Yes Denied, Date.

Mail to the Appropriate KCC Conservation Office:

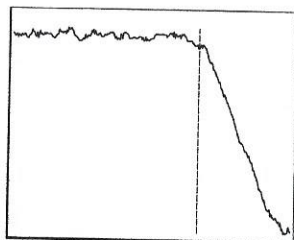
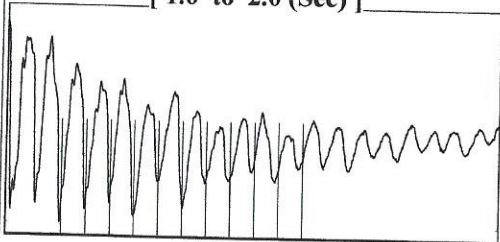
Table with 2 columns: Office Address, Phone. Rows for KCC District Office #1, #2, #3, #4.

Group: Belpre Well: Derley 1-19 (acquired on: 09/04/19 09:26:52)



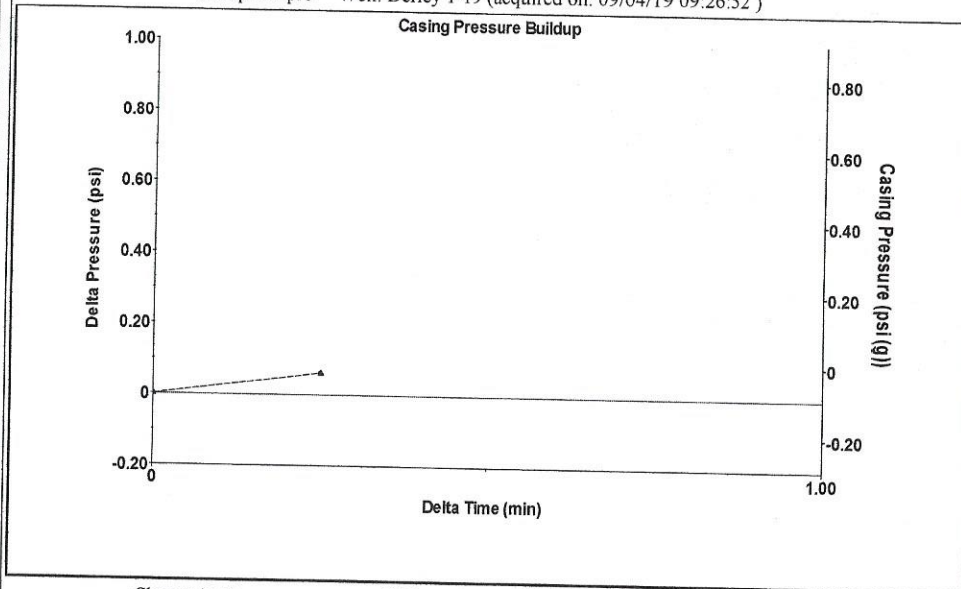
Filter Type High Pass Automatic Collar Count Yes Time 5.423 sec  
 Manual Acoustic Velocity 1186.99 ft/s Manual JTS/sec 20.3252 Joints 114.321 Jts  
 Depth 3338.17 ft

[ 1.0 to 2.0 (Sec) ]



Analysis Method: Automatic

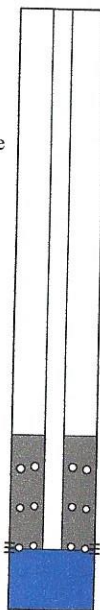
Group: Belpre Well: Derley 1-19 (acquired on: 09/04/19 09:26:52)



Change in Pressure 0.06 psi PT13440  
 Change in Time 0.25 min Range 0 - ? psi

Group: Belpre Well: Derley 1-19 (acquired on: 09/04/19 09:26:52)

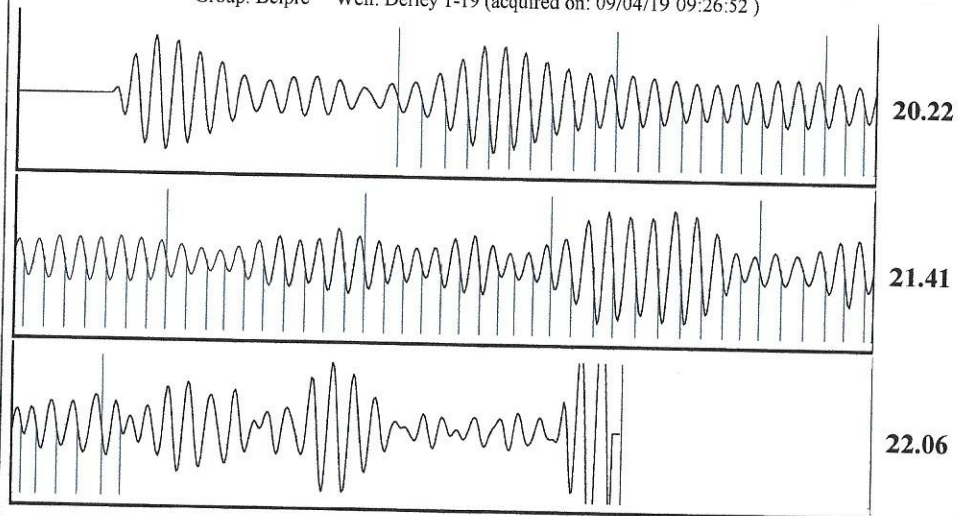
Production Current	Potential	Casing Pressure
Oil -*- BBL/D	-* - BBL/D	-0.1 psi (g)
Water -*- BBL/D	-* - BBL/D	Casing Pressure Buildup
Gas -*- Mscf/D	-* - Mscf/D	0.1 psi
		0.25 min
IPR Method	Vogel	Gas/Liquid Interface Pressure
PBHP/SBHP	-*-	1.2 psi (g)
Production Efficiency	0.0	
Oil 40 deg.API		Liquid Level Depth
Water 1.05 Sp.Gr.H2O		3338.17 ft
Gas 0.77 Sp.Gr.AIR		Pump Intake Depth
		4380.00 ft
Acoustic Velocity	1231.12 ft/s	Formation Depth
		4366.00 ft



Producing  
 Annular Gas Flow 5 Mscf/D  
 % Liquid 74 %  
 Pump Intake 263.2 psi (g)  
 Producing BHP 258.5 psi (g)  
 Static BHP -\*- psi (g)

Formation Submergence  
 Total Gaseous Liquid Column HT (TVD) 1042 ft  
 Equivalent Gas Free Liquid HT (TVD) 774 ft  
 Acoustic Test

Group: Belpre Well: Derley 1-19 (acquired on: 09/04/19 09:26:52)



Acoustic Velocity 1231.12 ft/s Joints counted 71  
 Joints Per Second 21.0808 jts/sec Joints to liquid level 114.321  
 Depth to liquid level 3338.17 ft Filter Width 18.3252 22.3252  
 Automatic Collar Count Yes Time to 1st Collar 0.884 4.252

September 24, 2019

Loveness Mpanje  
F. G. Holl Company L.L.C.  
9431 E CENTRAL STE 100  
WICHITA, KS 67206-2563

Re: Temporary Abandonment  
API 15-047-20408-00-00  
DERLEY 1-19  
NE/4 Sec.19-24S-16W  
Edwards County, Kansas

Dear Loveness Mpanje:

"Your temporary abandonment (TA) application for the well listed above has been approved. In accordance with K.A.R. 82-3-111 the TA status of this well will expire 09/24/2020.

- \* If you return this well to service or plug it, please notify the District Office.
- \* If you sell this well you are required to file a Transfer of Operator form, T-1.
- \* If the well will remain temporarily abandoned, you must submit a new TA application, CP-111, before 09/24/2020.

You may contact me at the number above if you have questions.

Very truly yours,

Michael Maier"