



American Warrior, Inc.

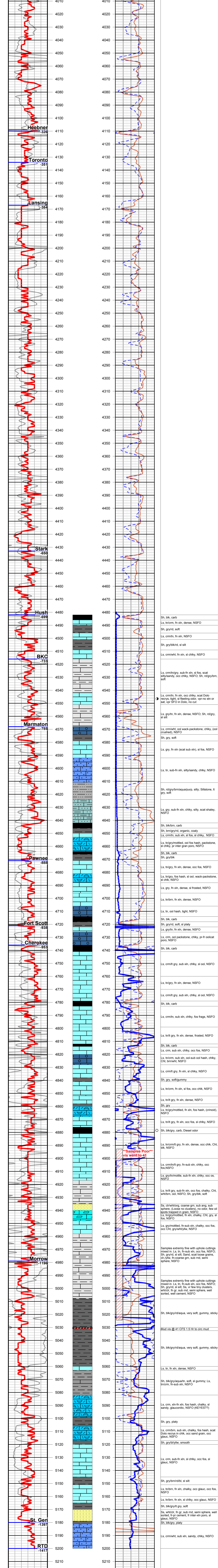
Luke Thompson - Geologist
 3118 Cummings Rd
 Garden City, KS 67846
 (785) 493-1254 cell
 (620) 275-5067 office

WELL Blaesi #9-6	API #: 15-199-20444-00-00	LOCATION: Wallace County, KS 335' FSL & 1800' FEL 6-15s-41w	Elevation KB: 3783' GL: 3775' Measurements from KB
----------------------------	-------------------------------------	---	---

Lithology Key 		Curve Data: Left Column: ROP (min/foot) Gamma Ray Right Column: Gas (units) Density Porosity Neutron Porosity	Geologist: Luke Thompson (American Warrior, Inc.) Drilling Contractor: Discovery Rig #1 Samples from: 4500' - RTD Drilling time from: 4000' - TD Geological Supervision from: 4500' - TD Correlating Log: Blaesi #4-6 (6-15s-41w) Surface Casing: 366' 8 5/8" 23# Production Casing: 5193' 5 1/2" 15.5# RTD: 5200' LTD: 5202'
--------------------------	--	---	--

Formation	Top	Log	Datum	Top	Sample	Datum	Correlating Well	Structural Comparison
Heebner	4109	-326	4109	-326			+2	
Toronto	4136	-353	4134	-351			-1	
Lansing	4171	-388	4167	-384			-3	
Stark	4436	-653	4433	-650			-1	
Hush	4482	-699	4482	-699			-1	
BKC	4518	-735	4516	-733			-3	
Marmaton	4568	-785	4568	-785			-3	
Pawnee	4674	-891	4671	-888			-12	
Fort Scott	4720	-937	4721	-938			-13	
Cherokee	4736	-953	4736	-953			-15	
Morrow	4976	-1193	4979	-1196			-25	
Morrow Sand	4994	-1211	Not Called				-25	
St. Gen	5180	-1397	5180	-1397			-41	

Status: Oil



Sh, blk, carb
Ls, tn/crm, fn xln, dense, NSFO
Sh, gry/rd, soft
Ls, crm/tn, fn xln, NSFO
Sh, gry/blk/rd, sl silt
Ls, crm/wht, fn xln, sl chiky, NSFO
Ls, crm/tn/gry, sub-fn xln, sl fos, scat silty/sandy, occ chiky, NSFO; Sh, rd/gry/brn, soft
Ls, crm/tn, fn xln, occ chiky, scat Dolo recrys, light, sl fleeting odor, vpr-no stn or sat, vpr SFO in Dolo, no cut
Ls, gry/tn, fn xln, dense, NSFO; Sh, rd/gry, sl silt
Ls, crm/wht, ool wack-packstone, chiky, (ool crushed), NSFO
Sh, gry, soft
Ls, gry, fn xln (scat sub xln), sl fos, NSFO
Ls, tn, sub-fn xln, silty/sandy, chiky, NSFO
Sh, rd/gry/brn/aqua/purp, silty; Siltstone, lt gry, soft
Ls, gry, sub-fn xln, chiky, silty, scat shaley, NSFO
Sh, blk/brn, carb
Sh, brn/gry/rd, organic, coaly
Ls, crm/tn, sub xln, sl fos, sl chiky, NSFO
Ls, tn/gry/mottled, ool fos hash, packstone, sl chiky, pr inter gran poro, NSFO
Sh, blk, carb
Sh, gry/blk
Ls, tn/gry, fn xln, dense, occ fos, NSFO
Ls, tn/gry, fos hash, sl ool, wack-packstone, sl chik, NSFO
Ls, gry, fn xln, dense, sl frosted, NSFO
Ls, tn/brn, fn xln, dense, NSFO
Ls, tn, ool hash, light, NSFO
Sh, blk, carb
Sh, gry/rd, soft, sl platy
Ls, gry/tn, fn xln, dense, NSFO
Ls, crm, ool packstone, chiky, pr-fr oolicat poro, NSFO
Sh, blk, carb
Ls, crm/lt gry, sub xln, chiky, sl ool, NSFO
Ls, tn/gry, fn xln, dense, NSFO
Ls, crm/lt gry, sub xln, chiky, sl ool, NSFO
Sh, blk, carb
Ls, crm/tn, sub xln, chiky, fos frags, NSFO
Ls, tn/lt gry, fn xln, dense, frosted, NSFO
Sh, blk, carb
Ls, crm, sub xln, chiky, occ fos, NSFO
Ls, tn/crm, sub xln, ool-sub ool hash, chiky, Cht, brn/wht, NSFO
Ls, crm/lt gry, fn xln, sl chiky, NSFO
Sh, gry, soft/gummy
Ls, tn/crm, fn xln, sl fos, occ chik, NSFO
Ls, tn/lt gry, fn xln, dense, NSFO
Sh, gry
Ls, tn/gry/mottled, fn xln, fos hash, (crinoid), NSFO
Ls, tn/lt gry, fn xln, occ fos, sl chiky, NSFO
Sh, blk/gry, carb, Diesel odor
Ls, tn/crm/lt gry, fn xln, dense, occ chik, Cht, blk, NSFO
Ls, crm/tn/lt gry, fn-sub xln, chiky, occ fos, NSFO
Ls, tn/gry/tn/mottle, sub-fn xln, chiky, occ os, NSFO
Ls, tn/lt gry, sub-fn xln, occ fos, chalky, Cht, wht/brn, ool, NSFO; Sh, gry/blk, soft
Ss, clr/wht/org, coarse gm, sub ang, sub sphere, (Loose no clusters), no odor, few oil spots trapped in grain, NSFO
Ls, tn/gry/mottled, fn xln, chalky, Cht, gry, sl fos, NSFO
Ls, gry/mottled, fn-sub xln, chalky, occ fos, occ Cht, gry/wht/yllw, NSFO
Samples extremely fine with uphole cuttings mixed in. Ls, tn, fn-sub xln, occ fos, NSFO; Sh, gry/rd, sl silt; Sand, scat loose grains, clr/yllw, fn-coarse gm, sub rnd, semi sphere, NSFO
Samples extremely fine with uphole cuttings mixed in. Ls, tn, fn-sub xln, occ fos, NSFO; Sh, gry/rd, sl silt; Ss, v few tiny clusters, wht/cir, fn gr, sub rnd, semi sphere, well sorted, well cement, fr inter-xln poro, sl glauc, NSFO
Sh, blk/gry/rd/aqua, very soft, gummy, sticky
Mud vis @ 41 CFS 1.5 Hr to circ mud
Sh, blk/gry/rd/aqua, very soft, gummy, sticky
Ls, tn, fn xln, dense, NSFO
Sh, blk/gry/aqua/tn, soft, sl gummy; Ls, tn/crm, fn-sub xln, NSFO
Ls, crm, xln-fn xln, fos hash, chalky, sl sandy, glauconitic, NSFO (KEYES??)
Sh, gry, platy
Ls, crm/brn, sub xln, chalky, fos hash, scat Dolo recrys in chik, occ sand grain, occ glauc, NSFO
Sh, gry/blk/yllw, smooth
Ls, crm, sub-fn xln, sl chiky, occ fos, sl glauc, NSFO
Sh, gry/brn/rd/bl, sl silt
Ls, tn/brn, fn xln, chalky, occ glauc, occ fos, NSFO
Ls, tn/brn, fn xln, sl chiky, occ glauc, NSFO
Sh, blk/gry/lt gry, soft
Ss, wht/cir, fn gr, sub rnd, semi sphere, well sorted, fr-cement, fr inter-xln poro, sl glauc, NSFO
Sh, blk/gry, platy
Ls, crm/wht, sub xln, sandy, chiky, NSFO