

**MERIT ENERGY COMPANY**  
**BLACK KNIGHT 28-1**  
**SECTION 28 T27S, R33W, 6th P.M.**  
**HASKELL COUNTY, KANSAS**

DATE:

DESCRIPTION:

[illegible]

# LEGEND:

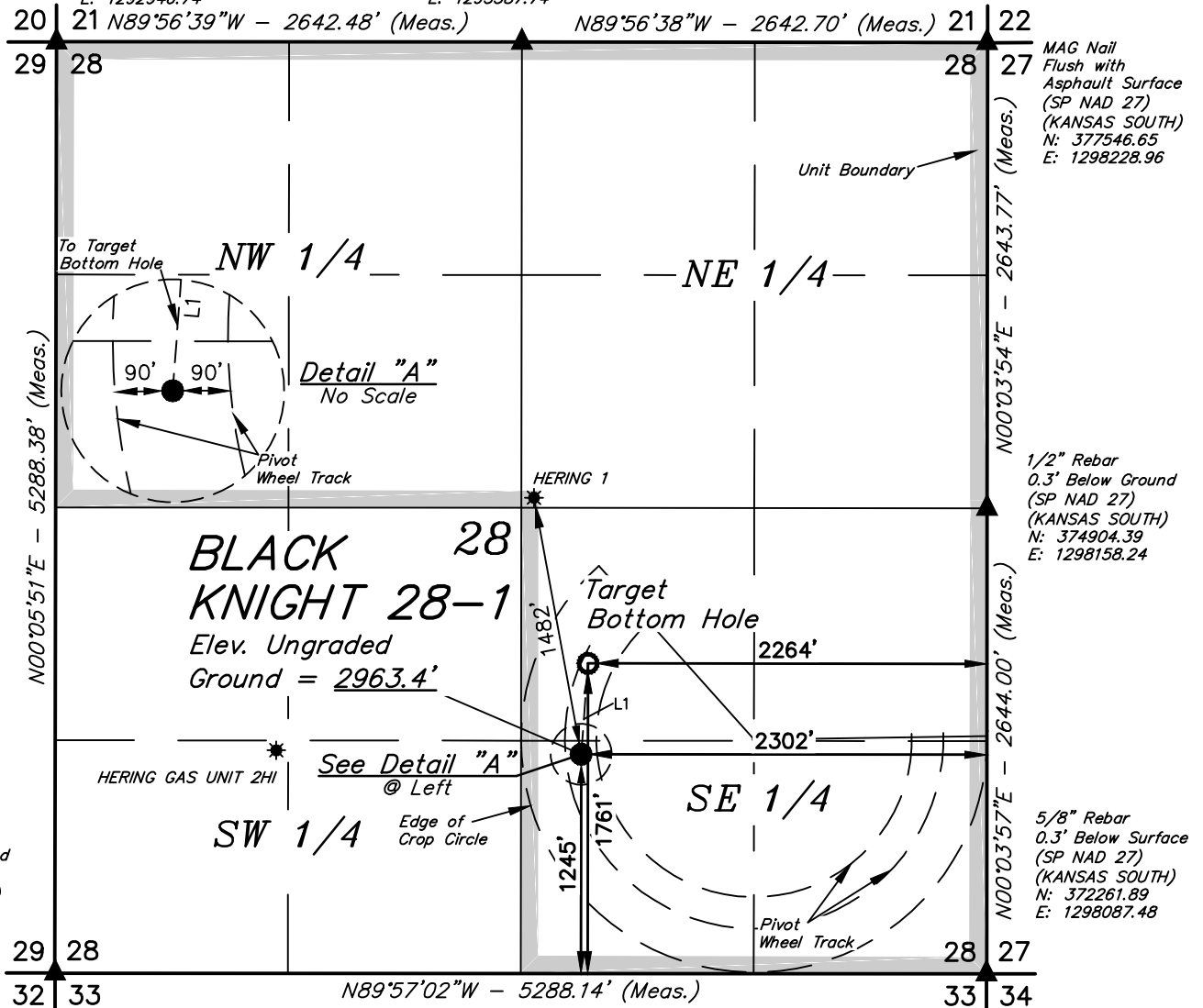
- = PROPOSED WELLHEAD.
- = TARGET BOTTOM HOLE.
- ▲ = SECTION CORNERS LOCATED.
- ★ = EXISTING WELLS

T27S, R33W, 6th P.M.

LINE TABLE		
LINE	DIRECTION	LENGTH
L1	N04°18'50"E	517.57'

## NOTE:

- Distances referenced on plat to section lines are perpendicular.



## CERTIFICATE

THIS IS TO CERTIFY THAT THE ABOVE PLAT WAS PREPARED FROM FIELD NOTES OF ACTUAL SURVEYS MADE BY ME OR UNDER MY SUPERVISION AND THAT THE SAME ARE TRUE AND CORRECT TO THE BEST OF MY KNOWLEDGE AND BELIEF.



NAD 83 (SURFACE LOCATION)	NAD 83 (TARGET BOTTOM HOLE)
LATITUDE = 37°40'02.71" (37.667419)	LATITUDE = 37°40'07.81" (37.668836)
LONGITUDE = 100°56'00.70" (100.933528)	LONGITUDE = 100°56'00.22" (100.933394)
NAD 27 (SURFACE LOCATION)	NAD 27 (TARGET BOTTOM HOLE)
LATITUDE = 37°40'02.62" (37.667395)	LATITUDE = 37°40'07.72" (37.668812)
LONGITUDE = 100°55'59.10" (100.933084)	LONGITUDE = 100°55'58.62" (100.932950)
STATE PLANE NAD 83 (KANSAS SOUTH)	STATE PLANE NAD 83 (KANSAS SOUTH)
N: 1685920.83 E: 608042.42	N: 1686435.67 E: 608094.56
STATE PLANE NAD 27 (KANSAS SOUTH)	STATE PLANE NAD 27 (KANSAS SOUTH)
N: 373567.17 E: 1295819.87	N: 374082.00 E: 1295872.00

## BASIS OF BEARINGS

BASIS OF BEARINGS IS A G.P.S. OBSERVATION

## BASIS OF ELEVATION

ELEVATION 2943.84' WAS DERIVED FROM AN OPUS SOLUTION AT LAT: 37°33'17.64" LONG: 100°53'21.35" AND HAS A DATUM OF NAVD88.



## MERIT ENERGY COMPANY

**BLACK KNIGHT 28-1**  
**1245' FSL 2302' FEL**  
**SW 1/4 SE 1/4, SECTION 28, T27S, R33W, 6th P.M.**  
**HASKELL COUNTY, KANSAS**

SURVEYED BY	J.P.	08-27-19	SCALE
DRAWN BY	S.C.S.	08-28-19	1" = 1000'
WELL LOCATION PLAT			



**UELS, LLC**  
Corporate Office \* 85 South 200 East  
Vernal, UT 84078 \* (435) 789-1017

# LEGEND:

- = PROPOSED WELLHEAD.
- = TARGET BOTTOM HOLE.
- ▲ = SECTION CORNERS LOCATED.
- ★ = EXISTING WELLS

T27S, R33W, 6th P.M.

## LINE TABLE

LINE	DIRECTION	LENGTH
L1	N04°18'50"E	517.57'

### NOTE:

- Distances referenced on plat to section lines are perpendicular.

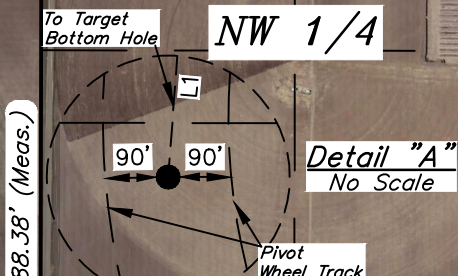
5/8" Rebar  
Flush with Asphalt Surface  
(SP NAD 27)  
(KANSAS SOUTH)  
N: 377687.20  
E: 1292946.74

5/8" Rebar  
Flush with Asphalt Surface  
(SP NAD 27)  
(KANSAS SOUTH)  
N: 377616.93  
E: 1295587.74

N89°56'39"W - 2642.48' (Meas.)

N89°56'38"W - 2642.70' (Meas.)

MAG Nail  
Flush with  
Asphalt Surface  
(SP NAD 27)  
(KANSAS SOUTH)  
N: 377546.65  
E: 1298228.96



N00°05'51"E - 5288.38' (Meas.)

N00°03'54"E - 2643.77' (Meas.)

1/2" Rebar  
0.3' Below Ground  
(SP NAD 27)  
(KANSAS SOUTH)  
N: 374904.39  
E: 1298158.24

**BLACK KNIGHT 28-1**  
Elev. Ungraded  
Ground = 2963.4'

HERING GAS UNIT 2H1

See Detail "A"  
@ Left

SW 1/4

Edge of  
Crop Circle

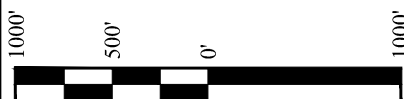
SE 1/4

Pivot  
Wheel Track

N00°03'57"E - 2644.00' (Meas.)

5/8" Rebar  
0.3' Below Surface  
(SP NAD 27)  
(KANSAS SOUTH)  
N: 372261.89  
E: 1298087.48

N89°57'02"W - 5288.14' (Meas.)



### CERTIFICATE

THIS IS TO CERTIFY THAT THE ABOVE PLAT WAS PREPARED FROM FIELD NOTES OF ACTUAL SURVEYS MADE BY ME OR UNDER MY SUPERVISION AND THAT THE SAME ARE TRUE AND CORRECT TO THE BEST OF MY KNOWLEDGE AND BELIEF.



NAD 83 (SURFACE LOCATION)	NAD 83 (TARGET BOTTOM HOLE)
LATITUDE = 37°40'02.71" (37.667419)	LATITUDE = 37°40'07.81" (37.668836)
LONGITUDE = 100°56'00.70" (100.933528)	LONGITUDE = 100°56'00.22" (100.933394)
NAD 27 (SURFACE LOCATION)	NAD 27 (TARGET BOTTOM HOLE)
LATITUDE = 37°40'02.62" (37.667395)	LATITUDE = 37°40'07.72" (37.668812)
LONGITUDE = 100°55'59.10" (100.933084)	LONGITUDE = 100°55'58.62" (100.932950)
STATE PLANE NAD 83 (KANSAS SOUTH)	STATE PLANE NAD 83 (KANSAS SOUTH)
N: 1685920.83 E: 608042.42	N: 1686435.67 E: 608094.56
STATE PLANE NAD 27 (KANSAS SOUTH)	STATE PLANE NAD 27 (KANSAS SOUTH)
N: 373567.17 E: 1295819.87	N: 374082.00 E: 1295872.00

### BASIS OF BEARINGS

BASIS OF BEARINGS IS A G.P.S. OBSERVATION

### BASIS OF ELEVATION

ELEVATION 2943.84' WAS DERIVED FROM AN OPUS SOLUTION AT LAT: 37°33'17.64" LONG: 100°53'21.35" AND HAS A DATUM OF NAVD88.



### MERIT ENERGY COMPANY

**BLACK KNIGHT 28-1**  
1245' FSL 2302' FEL  
SW 1/4 SE 1/4, SECTION 28, T27S, R33W, 6th P.M.  
HASKELL COUNTY, KANSAS

SURVEYED BY	J.P.	08-27-19	SCALE
DRAWN BY	S.C.S.	08-28-19	1" = 1000'

### WELL LOCATION PLAT



**UELS, LLC**  
Corporate Office \* 85 South 200 East  
Vernal, UT 84078 \* (435) 789-1017

BEGINNING AT THE INTERSECTION OF US-56 AND N. INMAN STREET IN SUBLETTE, KANSAS PROCEED IN A NORTHERLY DIRECTION ON N. INMAN STREET APPROXIMATELY 0.4 MILES TO THE JUNCTION OF THIS ROAD AND COUNTY ROAD 180 TO THE WEST; TURN LEFT AND PROCEED IN A WESTERLY DIRECTION APPROXIMATELY 1.5 MILES TO THE JUNCTION OF THIS ROAD AND US-160 TO THE NORTH; TURN RIGHT AND PROCEED IN A NORTHERLY DIRECTION APPROXIMATELY 13.1 MILES TO THE JUNCTION OF THIS ROAD AND COUNTY ROAD 50 TO THE WEST; TURN LEFT AND PROCEED IN A WESTERLY DIRECTION APPROXIMATELY 4.0 MILES TO THE JUNCTION OF THIS ROAD AND COUNTY ROAD II TO THE SOUTH; TURN LEFT AND PROCEED IN A SOUTHERLY DIRECTION APPROXIMATELY 0.5 MILES TO THE JUNCTION OF THIS ROAD AND THE LEASE ROAD TO THE EAST; TURN LEFT AND PROCEED IN AN EASTERLY THEN SOUTHERLY DIRECTION APPROXIMATELY 0.8 MILES. FROM THIS POINT, THE PROPOSED WELL LOCATION IS APPROXIMATELY 350' TO THE EAST.

TOTAL DISTANCE FROM SUBLETTE, KANSAS TO THE PROPOSED WELL LOCATION IS APPROXIMATELY 20.3 MILES.

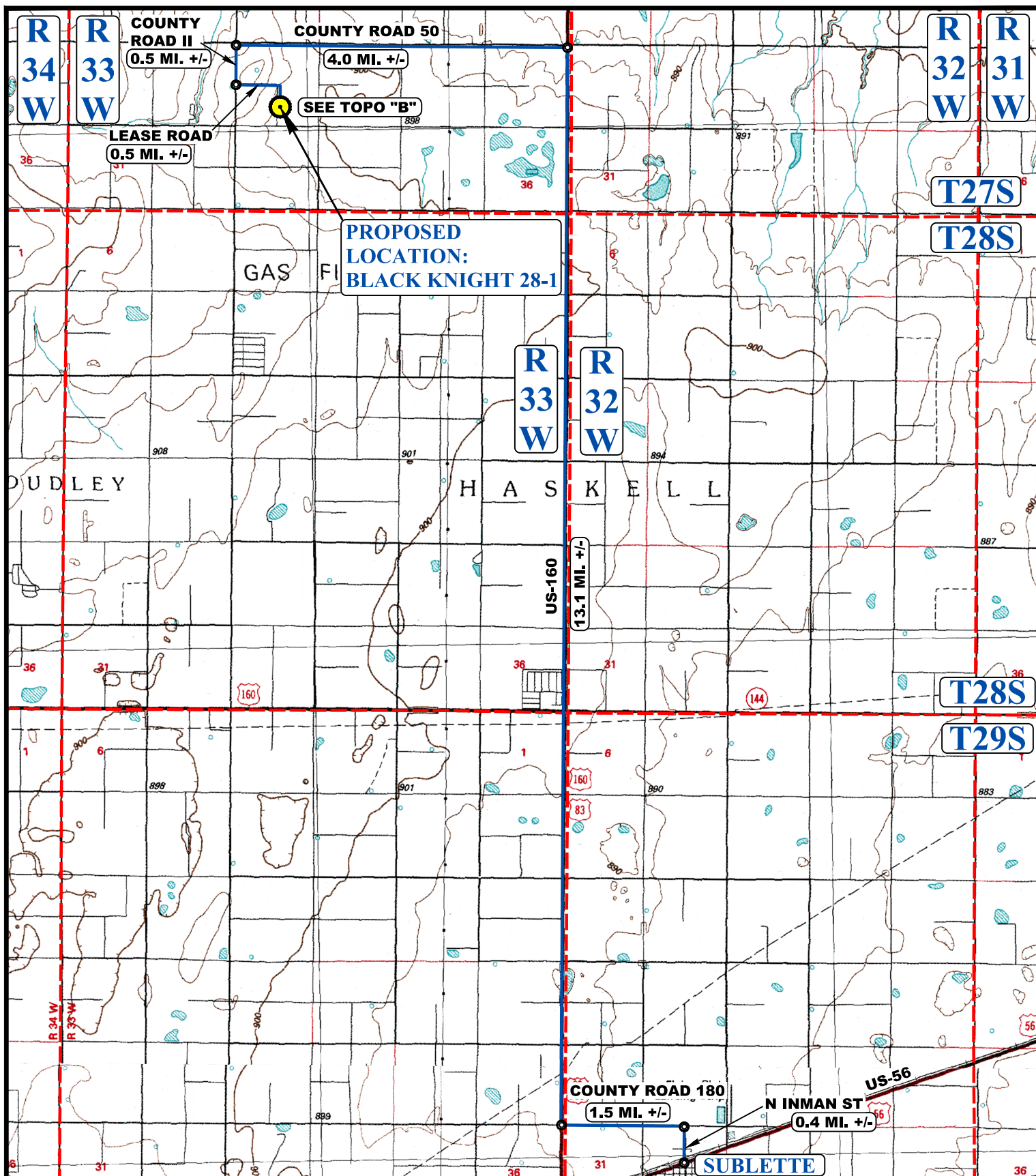
**MERIT ENERGY COMPANY**

**BLACK KNIGHT 28-1  
1245' FSL 2302' FEL  
SW 1/4 SE 1/4, SECTION 28, T27S, R33W, 6th P.M.  
HASKELL COUNTY, KANSAS**

SURVEYED BY	J.P.	08-27-19	
DRAWN BY	S.C.S.	08-28-19	
ROAD DESCRIPTION			



**UELS, LLC**  
Corporate Office \* 85 South 200 East  
Vernal, UT 84078 \* (435) 789-1017



# **LEGEND:**

● PROPOSED LOCATION



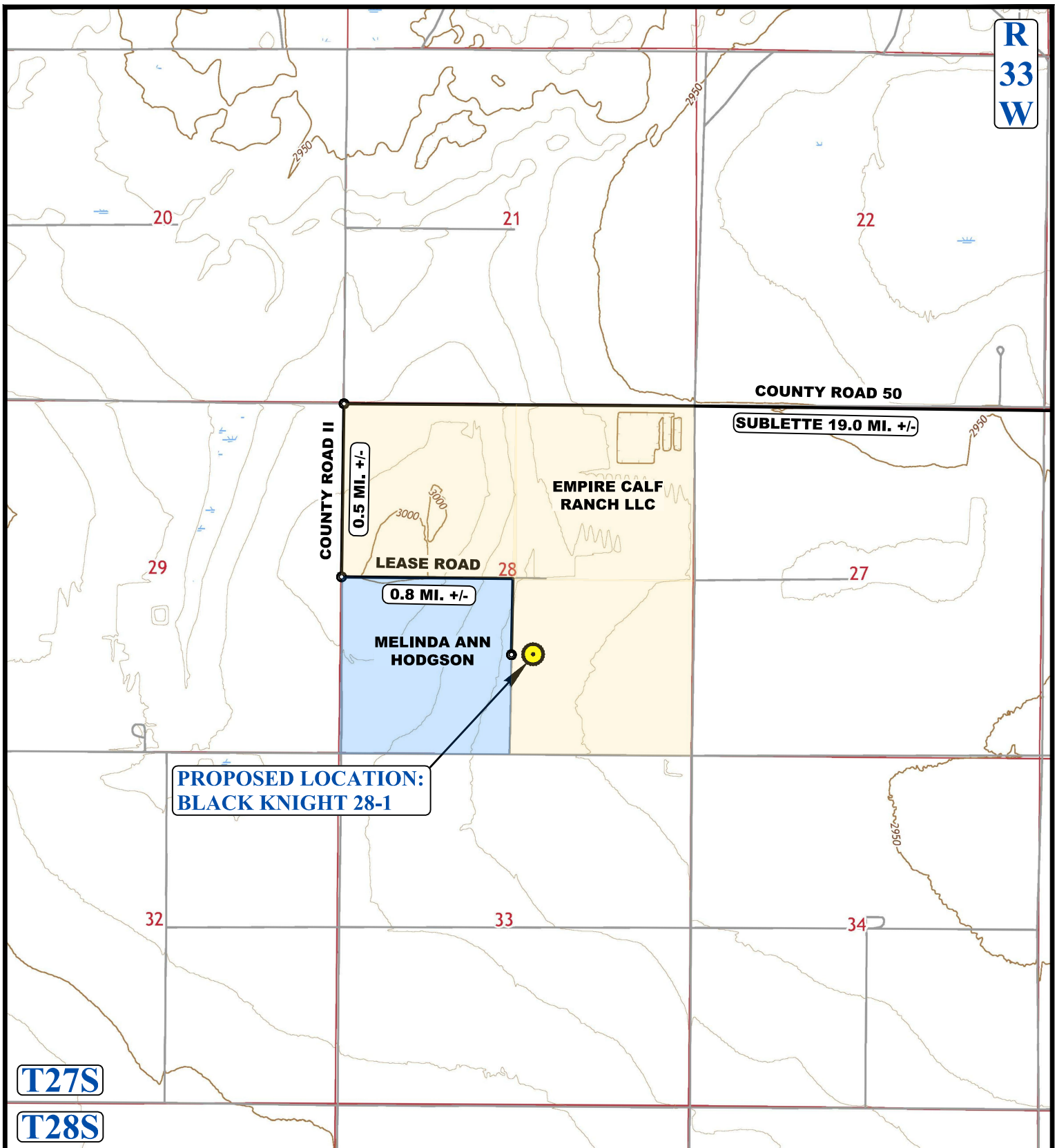
**UELS, LLC**  
Corporate Office \* 85 South 200 East  
Vernal, UT 84078 \* (435) 789-1017



## **MERIT ENERGY COMPANY**

**BLACK KNIGHT 28-1**  
1245' FSL 2302' FEL  
SW 1/4 SE 1/4, SECTION 28, T27S, R33W, 6th P.M.  
HASKELL COUNTY, KANSAS

SURVEYED BY	J.P.	08-27-19	SCALE
DRAWN BY	S.C.S.	08-28-19	1 : 100,000
<b>ACCESS ROAD MAP</b>			<b>TOPO A</b>



NOTE: PARCEL DATA SHOWN HAS BEEN OBTAINED FROM VARIOUS SOURCES AND SHOULD BE USED FOR MAPPING, GRAPHIC AND PLANNING PURPOSES ONLY. NO WARRANTY IS MADE BY UINTAH ENGINEERING AND LAND SURVEYING (UELS) FOR ACCURACY OF THE PARCEL DATA.

#### LEGEND:

— EXISTING ROAD



#### MERIT ENERGY COMPANY

**BLACK KNIGHT 28-1**  
**1245' FSL 2302' FEL**  
**SW 1/4 SE 1/4, SECTION 28, T27S, R33W, 6th P.M.**  
**HASKELL COUNTY, KANSAS**

SURVEYED BY	J.P.	08-27-19	SCALE
DRAWN BY	S.C.S.	08-28-19	1 : 24,000
<b>ACCESS ROAD MAP</b>			<b>TOPO B</b>



**UELS, LLC**  
 Corporate Office \* 85 South 200 East  
 Vernal, UT 84078 \* (435) 789-1017