

KSONA - Potential Tank Battery Location and Lease Road

PLOT OF THE INTENDED WELL

Operator: McCoy Petroleum Corporation
 Lease: KOEHN "F" #1-29
 Well Number: #1-29
 Field: Wildcat
 Number of Acres attributable to well: 157
 QTR/QTR/QTR/QTR of acreage: NE

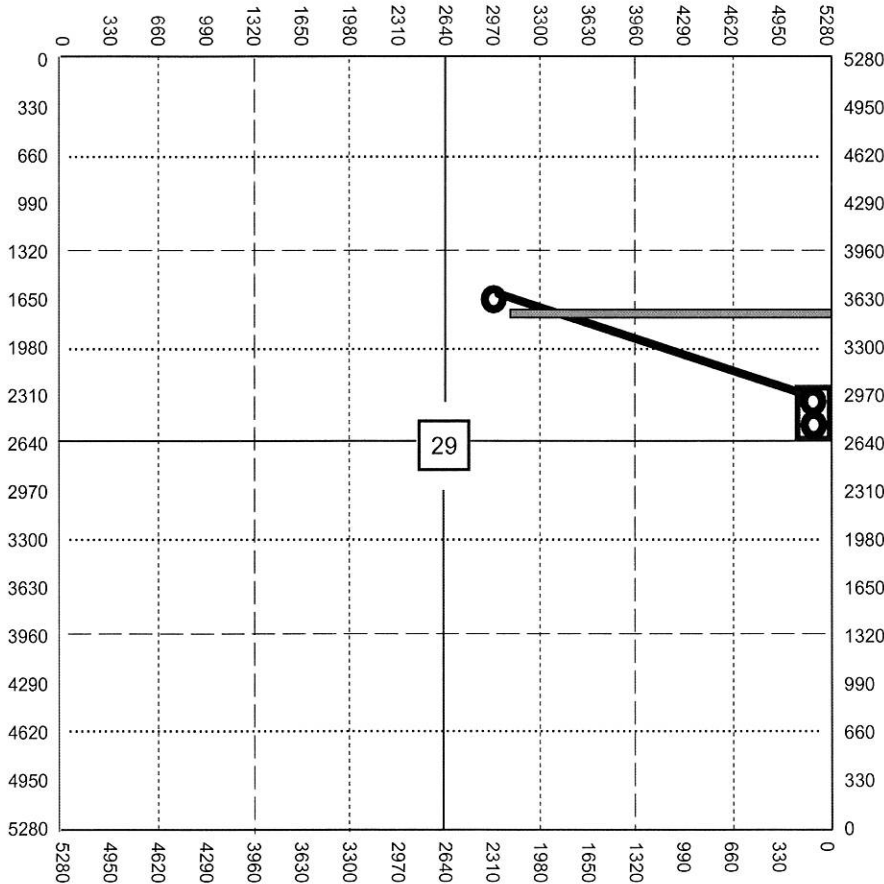
Location of Well: County: NW SW NE Haskell County
1650 feet from N / S Line of Section
2310 feet from E / W Line of Section
 Sec 29 Twp. 29 S Rng. 31 E W

Is Section Regular or Irregular

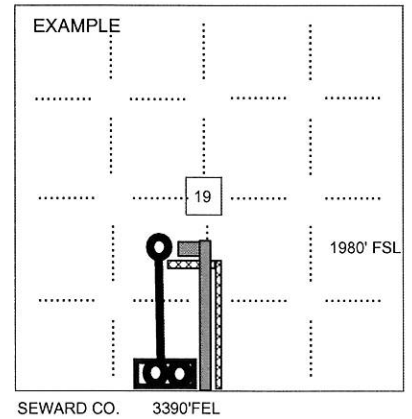
If Section is Irregular, locate well from nearest corner boundary.
 Section corner used: NE NW SE SW

PLAT

Show the predicted locations of lease roads, tank batteries, pipelines and electrical lines,
 as required by the Kansas Surface Owner Notice Act (House Bill 2032).



- LEGEND**
- Well Location
 - Tank Battery Location
 - Pipeline Location
 - Electric Line Location
 - Lease Road Location



NOTE: Spot of the proposed drilling location.