

ADVANTAGE ELEVATIONS

OIL FIELD SURVEYORS

BOX 8604 - PRATT, KS 67124
(620) 672-6491

823192

INVOICE NO.

VAL ENERGY INC

OPERATOR

1-31

NO.

BOUZIDEN

FARM

BARBER

COUNTY

31

S

30s

T

12w

R

960' FNL & 1950' FWL of Sec.

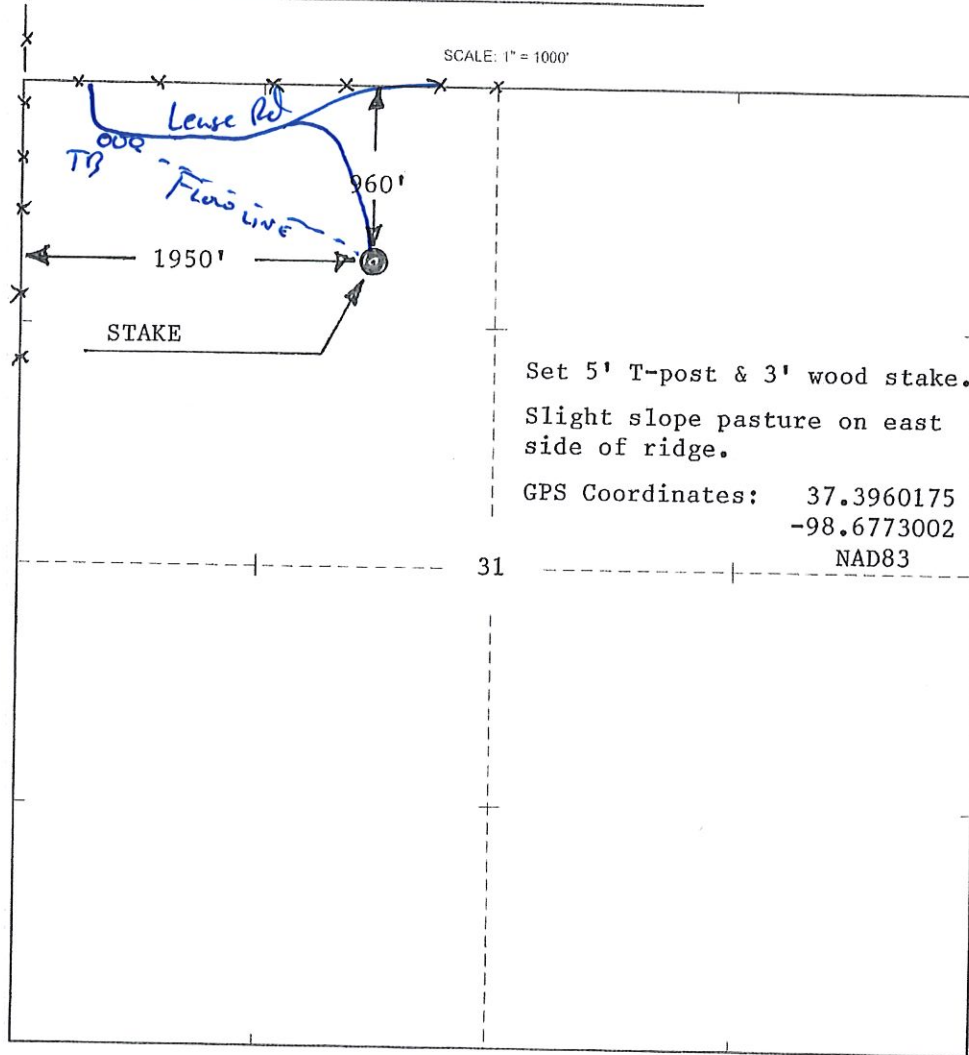
LOCATION

ELEVATION: 1811' GR

VAL ENERGY INC
125 N. Market Ste 1110
Wichita, KS 67202



AUTHORIZED BY: Todd Allam



DATE STAKED: 8/23/19