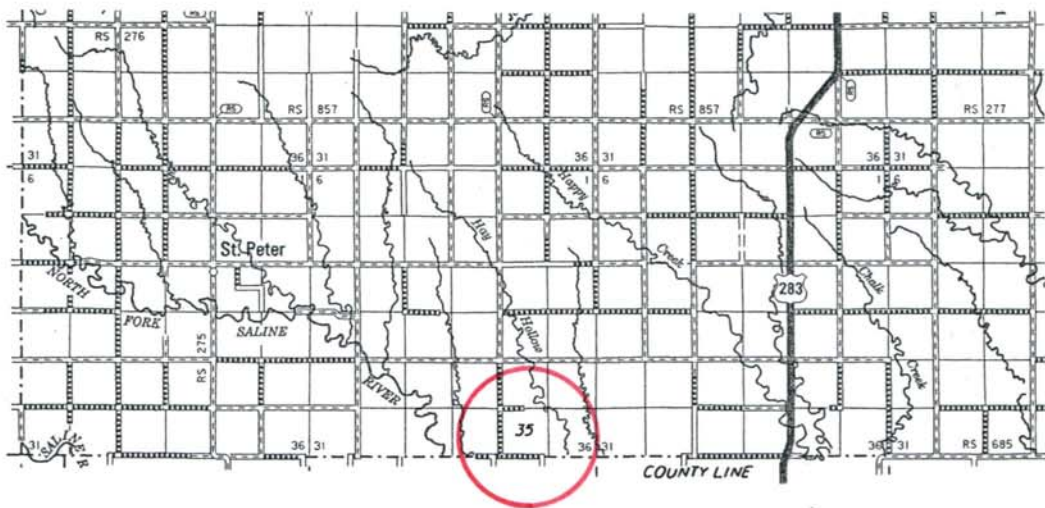
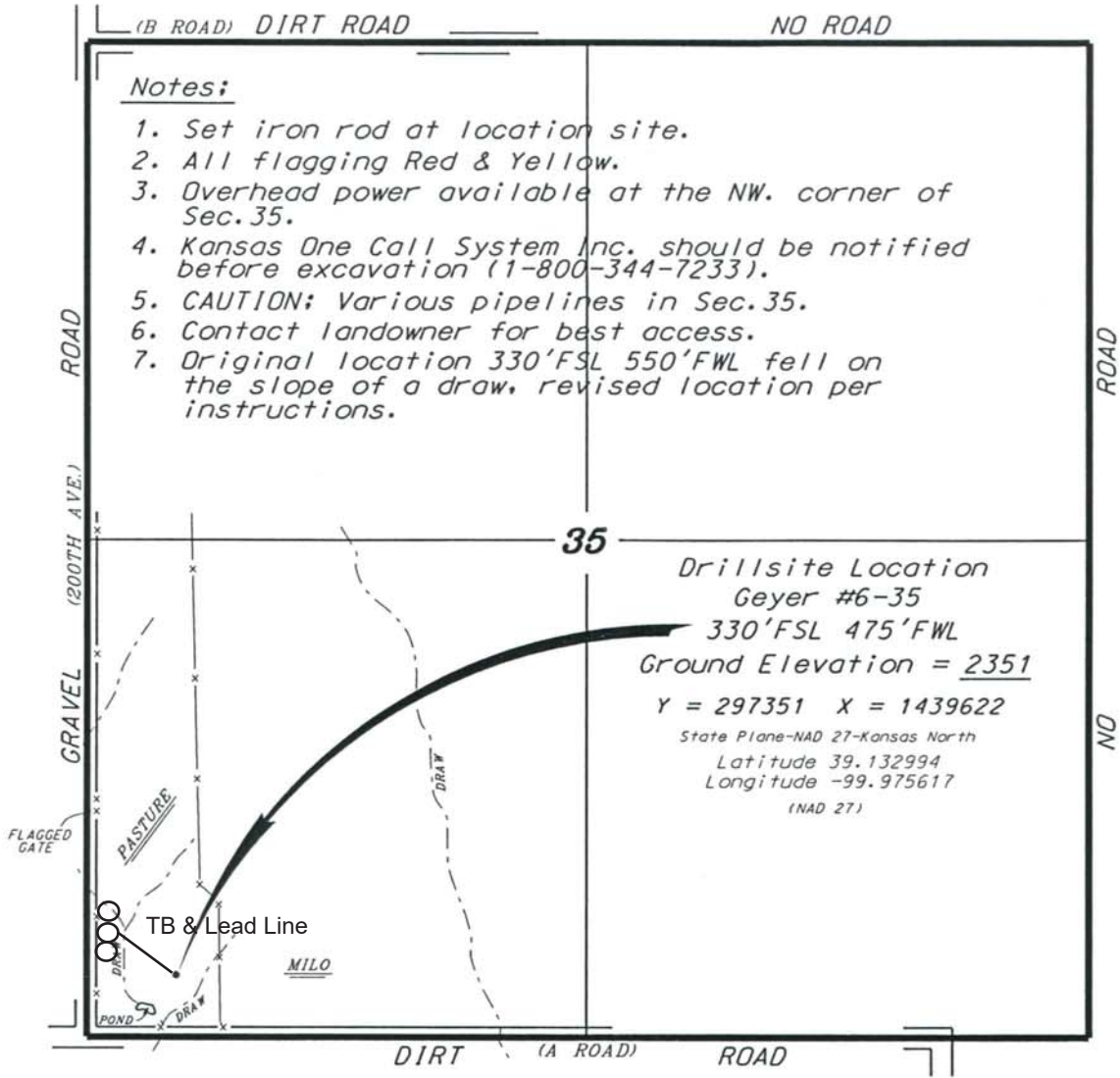


MURFIN DRILLING COMPANY, INC.
 GEYER LEASE
 SW. 1/4, SECTION 35, T10S, R24W
 GRAHAM COUNTY, KANSAS

* Ingress and egress to location as shown on this plot is per usage only and may not be legally opened for public use. Contact landowner, tenant and county road department for access.

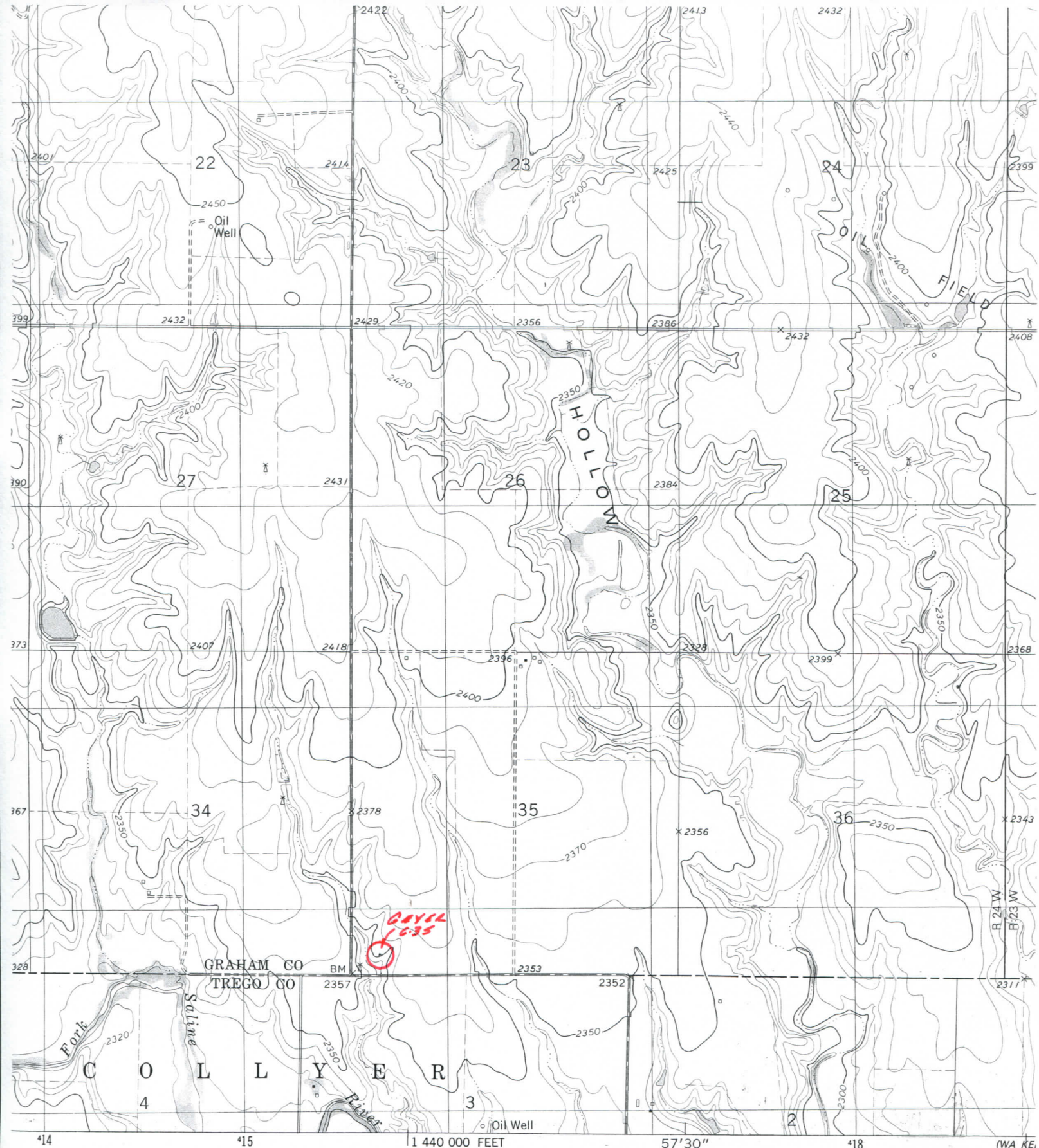


* Controlling data is based upon the best maps and photographs available to us and upon a regular section of land containing 640 acres.

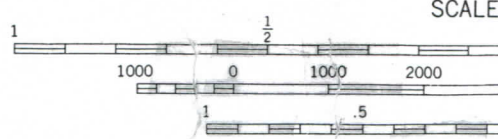
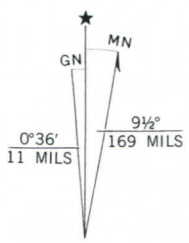
* Approximate section lines were determined using the normal standard of care of oilfield surveyors practicing in the state of Kansas. The section corners, which establish the precise section lines, were not necessarily located, and the exact location of the drillsite location in the section is not guaranteed. Therefore, the operator securing this service and accepting this plot and all other parties relying thereon agree to hold Central Kansas Oilfield Services, Inc., its officers and employees harmless from all losses, costs and expenses and said entities released from any liability from incidental or consequential damages.

* Elevations derived from National Geodetic Vertical Datum.

Date September 5, 2019



1, edited, and published by the Geological Survey
 y USGS and NOS/NOAA
 by photogrammetric methods from aerial photographs
 74. Field checked 1974. Map edited 1979
 1 and 10,000-foot grid ticks: Kansas coordinate
 orth zone (Lambert conformal conic)
 ter Universal Transverse Mercator grid, zone 14
 th American datum
 dashed lines indicate selected fence and field lines where



CONTOUR IN 1
 NATIONAL GEODETIC V