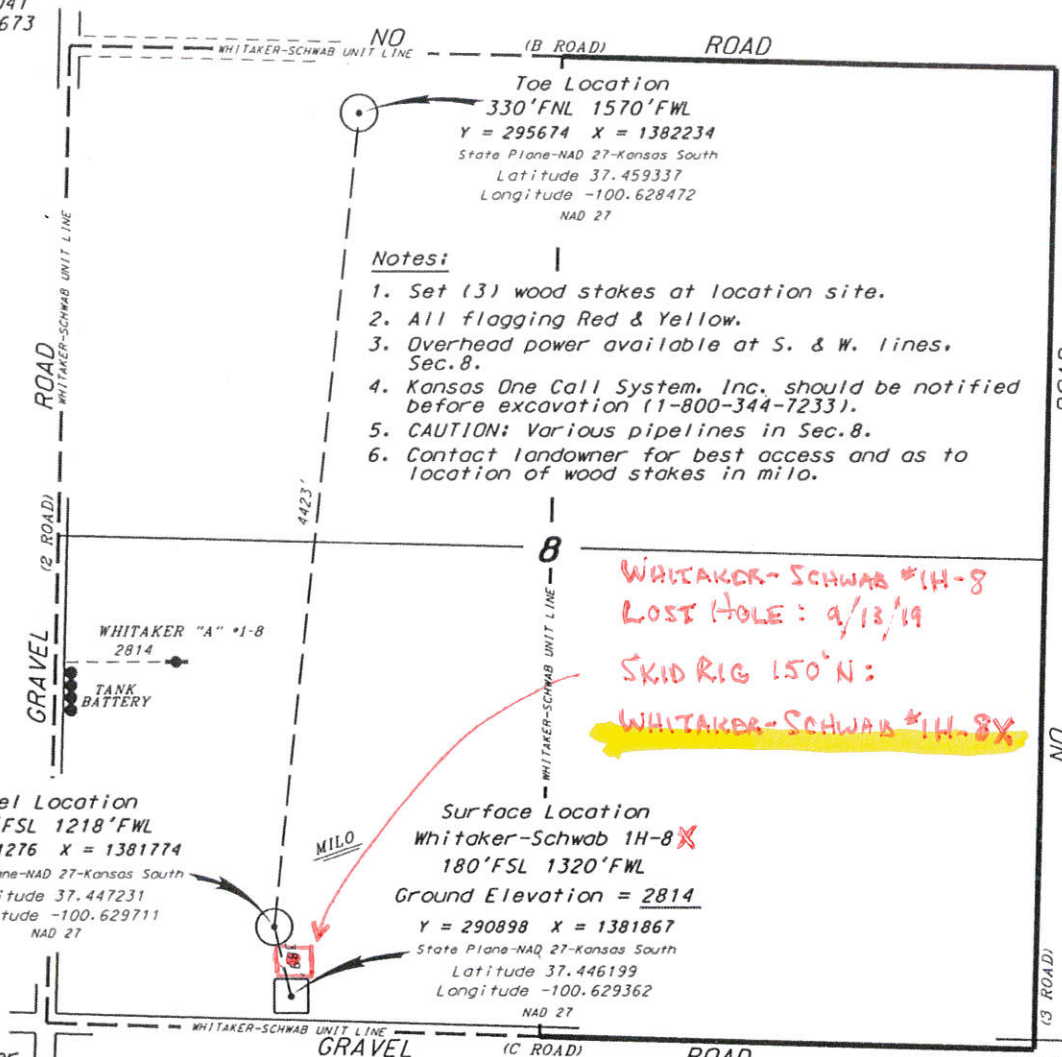


MCCOY PETROLEUM CORPORATION
 WHITAKER-SCHWAB LEASE
 W. 1/2, SECTION 8, T30S, R30W
 MEADE COUNTY, KANSAS

NW. Corner
 Y = 296041
 X = 1380673

NE. Corner
 Y = 295917
 X = 1385982

*Ingress and egress to location as shown on this plat is per usage only and may not be legally opened for public use. Contact landowner, tenant and county road department for access.



Notes:

1. Set (3) wood stakes at location site.
2. All flagging Red & Yellow.
3. Overhead power available at S. & W. lines, Sec. 8.
4. Kansas One Call System, Inc. should be notified before excavation (1-800-344-7233).
5. CAUTION: Various pipelines in Sec. 8.
6. Contact landowner for best access and as to location of wood stakes in milo.

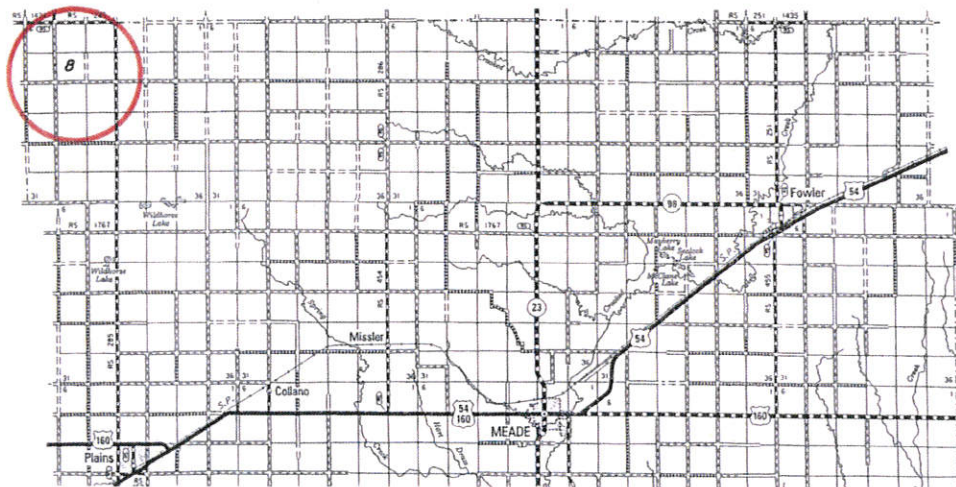
WHITAKER-SCHWAB #1H-8
 LOST HOLE: 9/13/19
 SKID RIG 150' N:
 WHITAKER-SCHWAB #1H-8X

Heel Location
 555' FSL 1218' FWL
 Y = 291276 X = 1381774
 State Plane-NAD 27-Kansas South
 Latitude 37.447231
 Longitude -100.629711
 NAD 27

Surface Location
 Whitaker-Schwab 1H-8 X
 180' FSL 1320' FWL
 Ground Elevation = 2814
 Y = 290898 X = 1381867
 State Plane-NAD 27-Kansas South
 Latitude 37.446199
 Longitude -100.629362
 NAD 27

SW. Corner
 Y = 290754
 X = 1380543

SE. Corner
 Y = 290610
 X = 1385856



Controlling data is based upon the best maps and photographs available to us and upon a regular section of land containing 640 acres.
 Approximate section lines were determined using the normal standards of care of oilfield surveyors practicing in the state of Kansas. The section corners, which establish the precise section lines, were not necessarily located, and the exact location of the drillsite location in the section is not guaranteed. Therefore, the operator securing this service and accepting this plat and all other parties relying thereon agree to hold Central Kansas Oilfield Services, Inc., its officers and employees harmless from all losses, costs and expenses and said entities released from any liability from incidental or consequential damages.
 Elevations derived from National Geodetic Vertical Datum.

Date August 27, 2019