

Fall & Associates

Stake and Elevation Service

P.O. Box 222

Pretty Prairie, KS. 67570

785-243-7506

Date 7-23-19

Invoice Number 0722191

MURFIN DRILLING

1-21

Olive

Operator

Number

Farm Name

Cheyenne-KS

21

2s

37w

500'FNL 2145'FWL

County-State

S

T

R

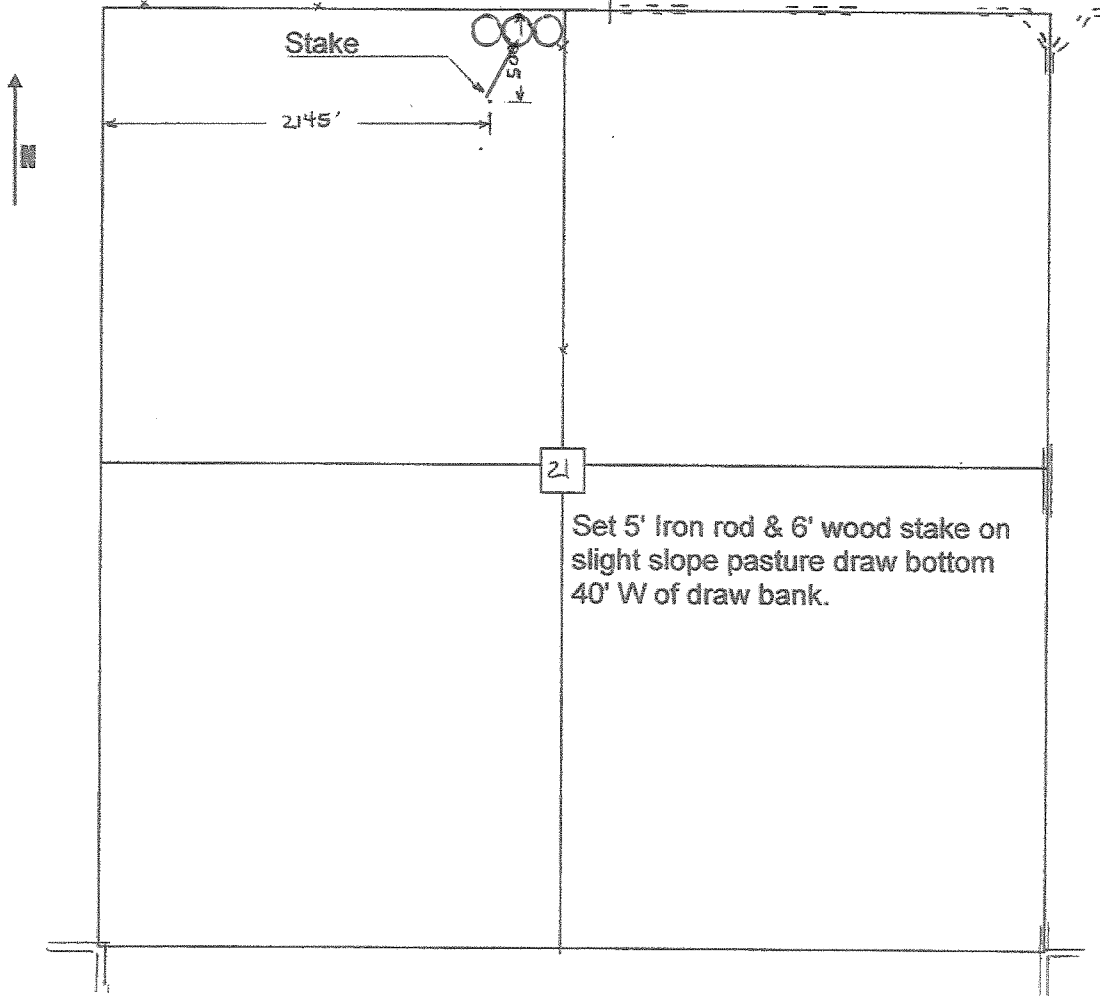
Location

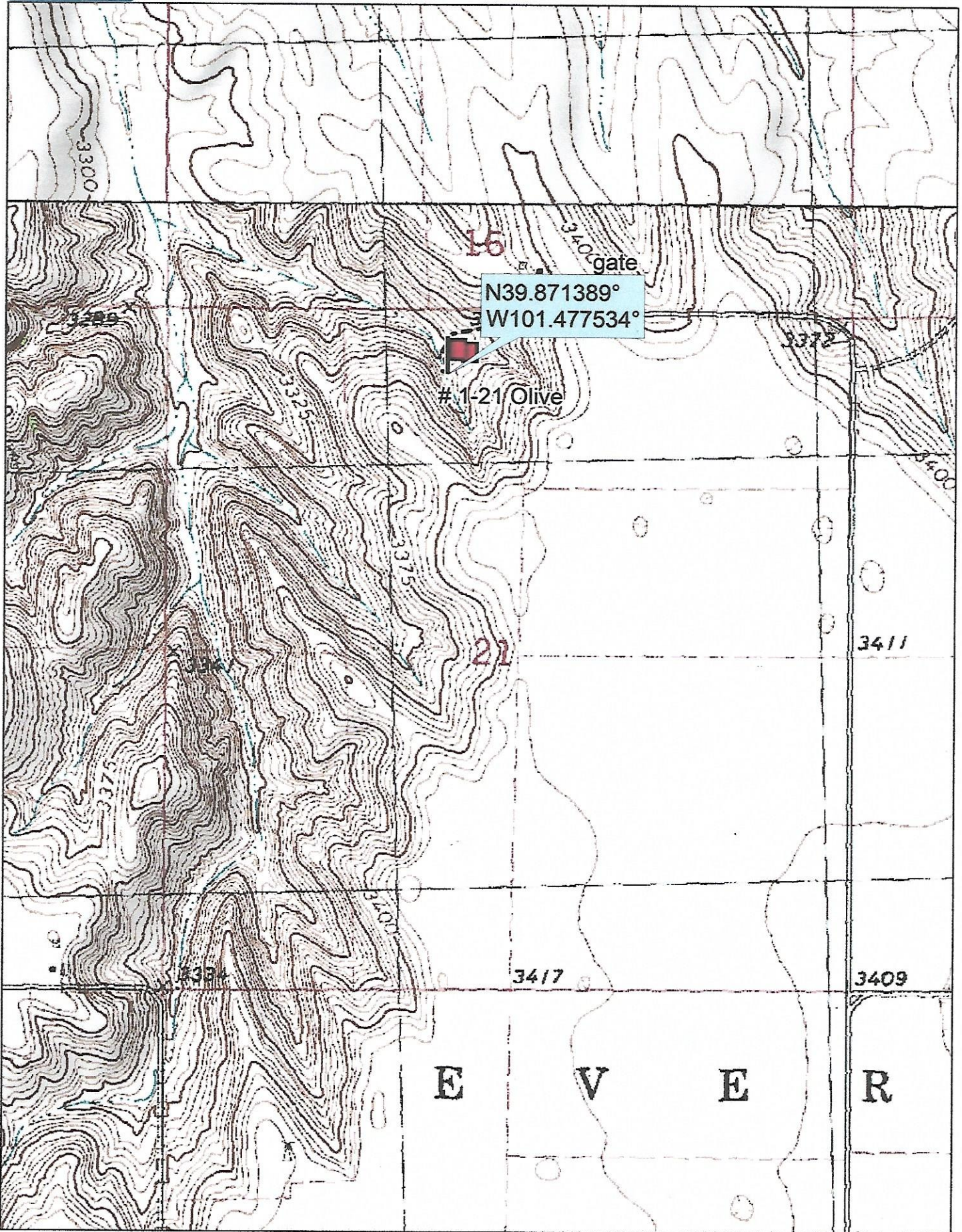
Murfin Drilling
250 N. Water
Suite 300
Wichita, Ks. 67202

Elevation 3331 Gr.

Ordered By: Shauna

Scale 1"=1000'





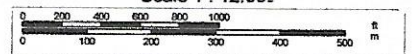
Data use subject to license

© DeLorme. Topo North America™ 9.

www.delorme.com



Scale 1 : 12,000



1" = 1,000.0 ft

Data Zoom 13-1