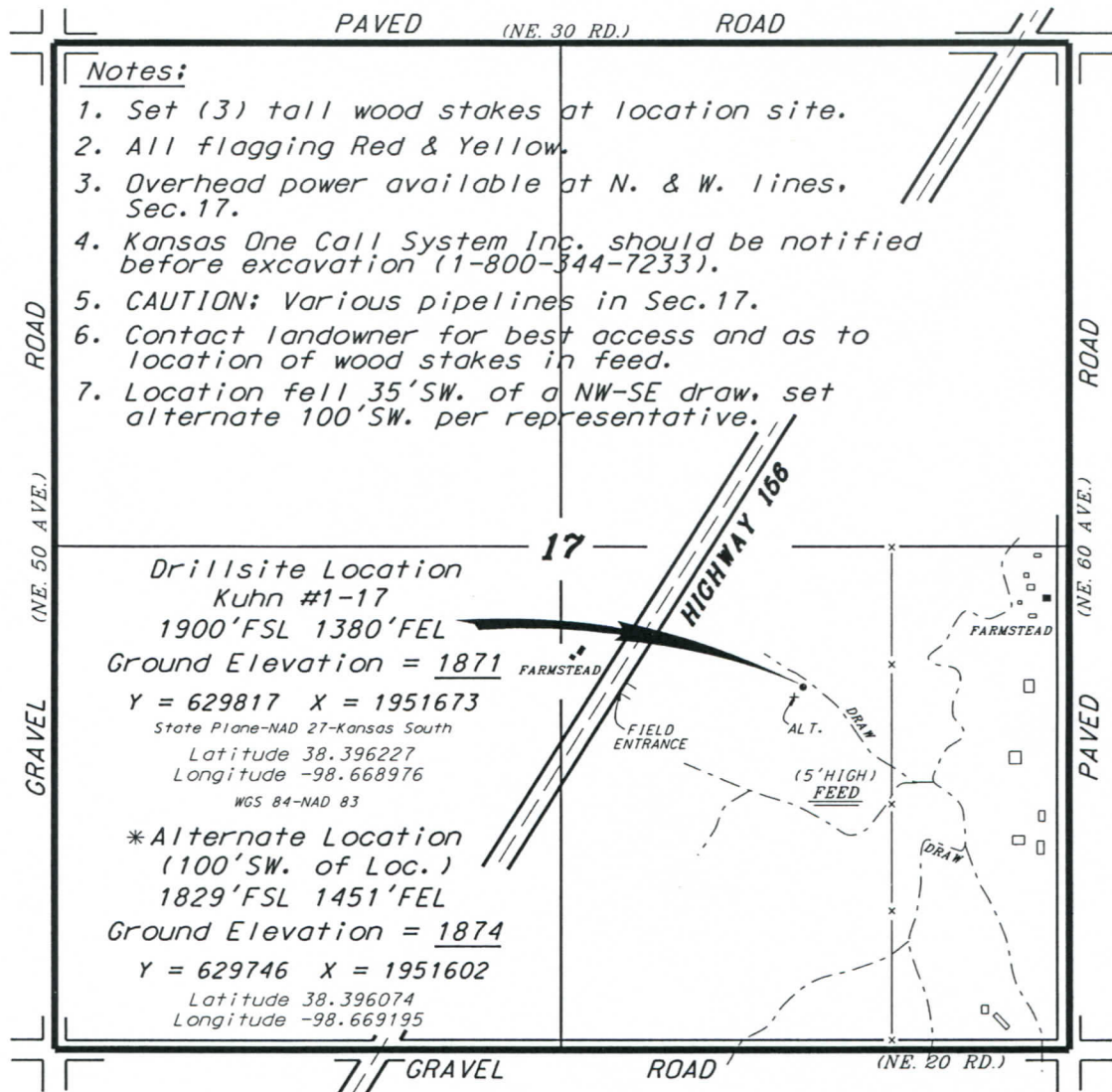


EDISON OPERATING COMPANY, LLC
 KUHN LEASE
 SE.1/4, SECTION 17, T19S, R12W
 BARTON COUNTY, KANSAS

* Ingress and egress to location as shown on this plot is per usage only and may not be legally opened for public use. Contact landowner, tenant and county road department for access.

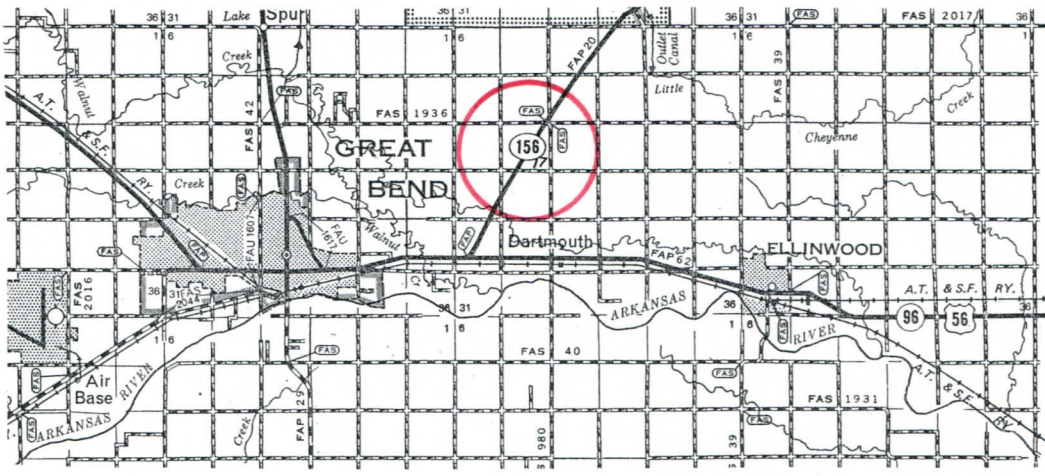


Notes:

1. Set (3) tall wood stakes at location site.
2. All flagging Red & Yellow.
3. Overhead power available at N. & W. lines, Sec.17.
4. Kansas One Call System Inc. should be notified before excavation (1-800-344-7233).
5. CAUTION: Various pipelines in Sec.17.
6. Contact landowner for best access and as to location of wood stakes in feed.
7. Location fell 35'SW. of a NW-SE draw, set alternate 100'SW. per representative.

Drillsite Location
 Kuhn #1-17
 1900'FSL 1380'FEL
 Ground Elevation = 1871
 Y = 629817 X = 1951673
 State Plane-NAD 27-Kansas South
 Latitude 38.396227
 Longitude -98.668976
 WGS 84-NAD 83

*** Alternate Location**
 (100'SW. of Loc.)
 1829'FSL 1451'FEL
 Ground Elevation = 1874
 Y = 629746 X = 1951602
 Latitude 38.396074
 Longitude -98.669195



* Controlling data is based upon the best maps and photographs available to us and upon a regular section of land containing 640 acres.
 * Approximate section lines were determined using the normal standard of care of oilfield surveyors practicing in the state of Kansas. The section corners, which establish the precise section lines, were not necessarily located, and the exact location of the drillsite location in the section is not guaranteed. Therefore, the operator securing this service and accepting this plot and all other parties relying thereon agree to hold Central Kansas Oilfield Services, Inc., its officers and employees harmless from all losses, costs and expenses and said entities released from any liability from incidental or consequential damages.
 * Elevations derived from National Geodetic Vertical Datum.

Date September 17, 2019