



Fall & Associates

Stake and Elevation Service

P.O. Box 222

Pretty Prairie, KS. 67570

785-243-7506

Date 7-23-19

Invoice Number 0722191

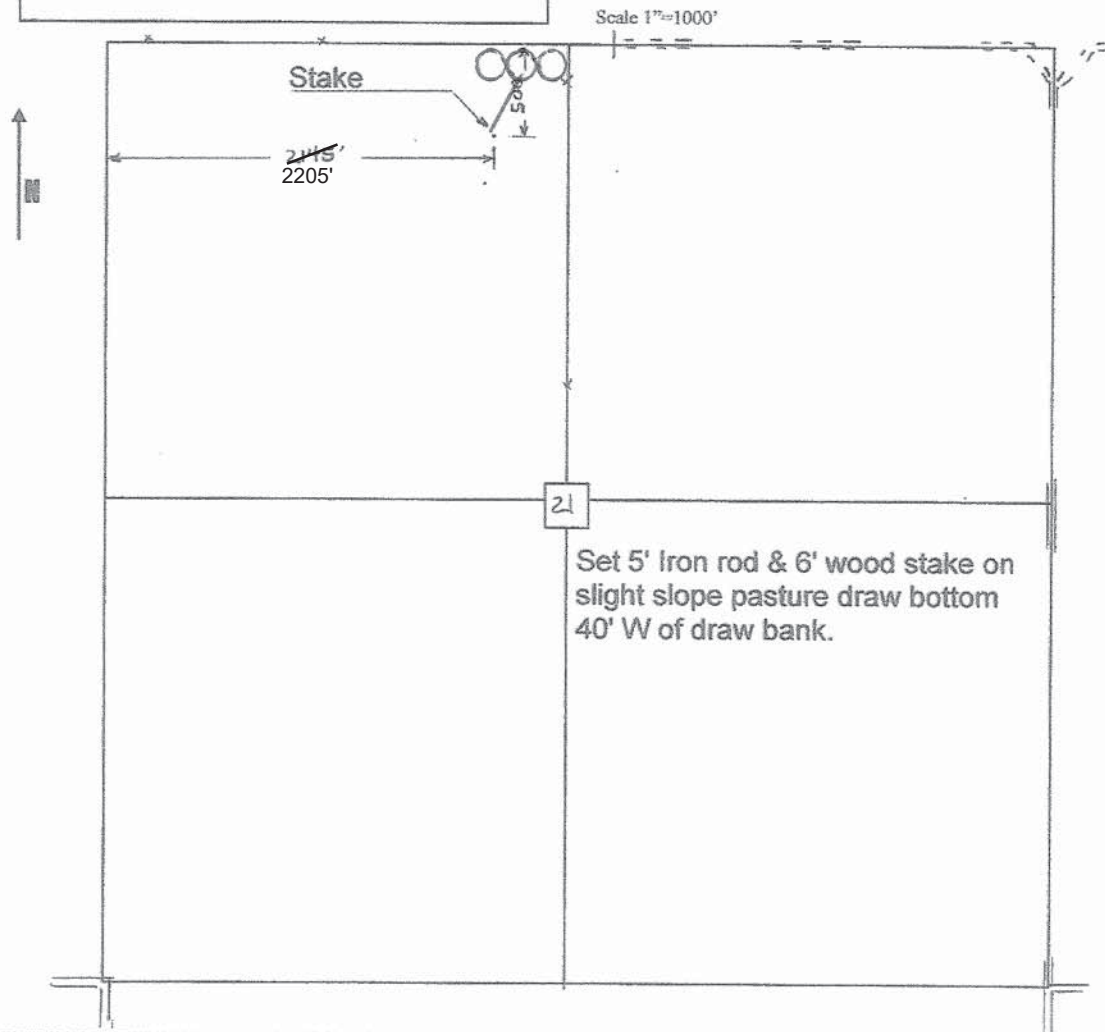
MURFIN DRILLING	1-21			Olive
Operator	Number			Farm Name
Cheyenne-KS	21	2s	37w	500'FNL 2145'FWL
County-State	S	T	R	Location

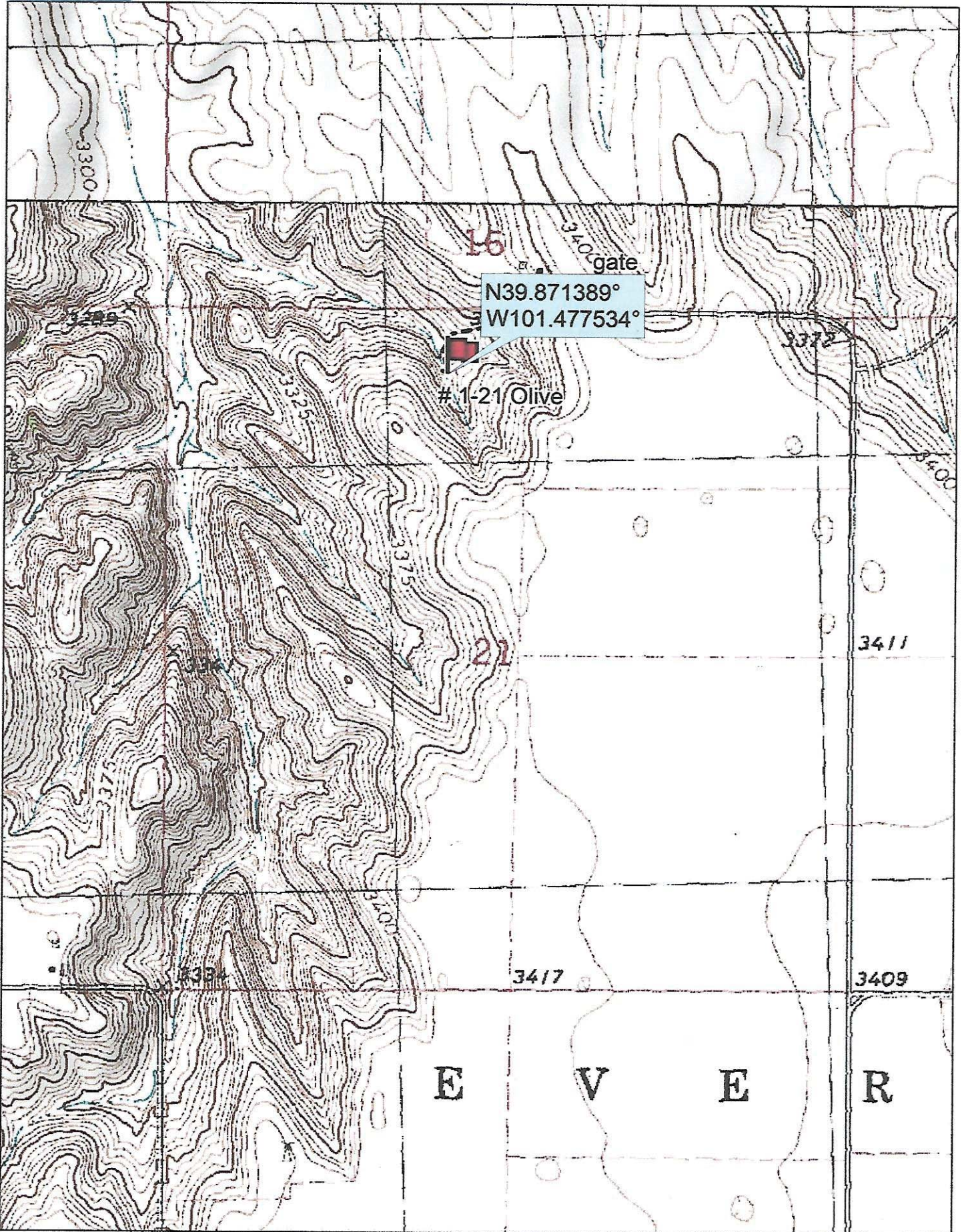
Murfin Drilling
 250 N. Water
 Suite 300
 Wichita, Ks. 67202

Moved location to improve.

New footages: 550FNL 2205FWL Elevation 3331 Gr.

Ordered By: Shauna





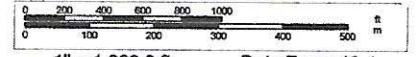
Data use subject to license

© DeLorme. Topo North America™ 9.

www.delorme.com



Scale 1 : 12,000



1" = 1,000.0 ft

Data Zoom 13-1