

# ADVANTAGE ELEVATIONS

OIL FIELD SURVEYORS

BOX 8604 - PRATT, KS 67124  
(620) 672-6491

919191

INVOICE NO.

SAPPHIRE RESOURCES, LLC  
OPERATOR

1  
NO.

WATTS RANCH  
FARM

BARBER CO., KS  
COUNTY

15 34s 12w  
S T R

35' FSL & 480' FWL of Sec  
LOCATION

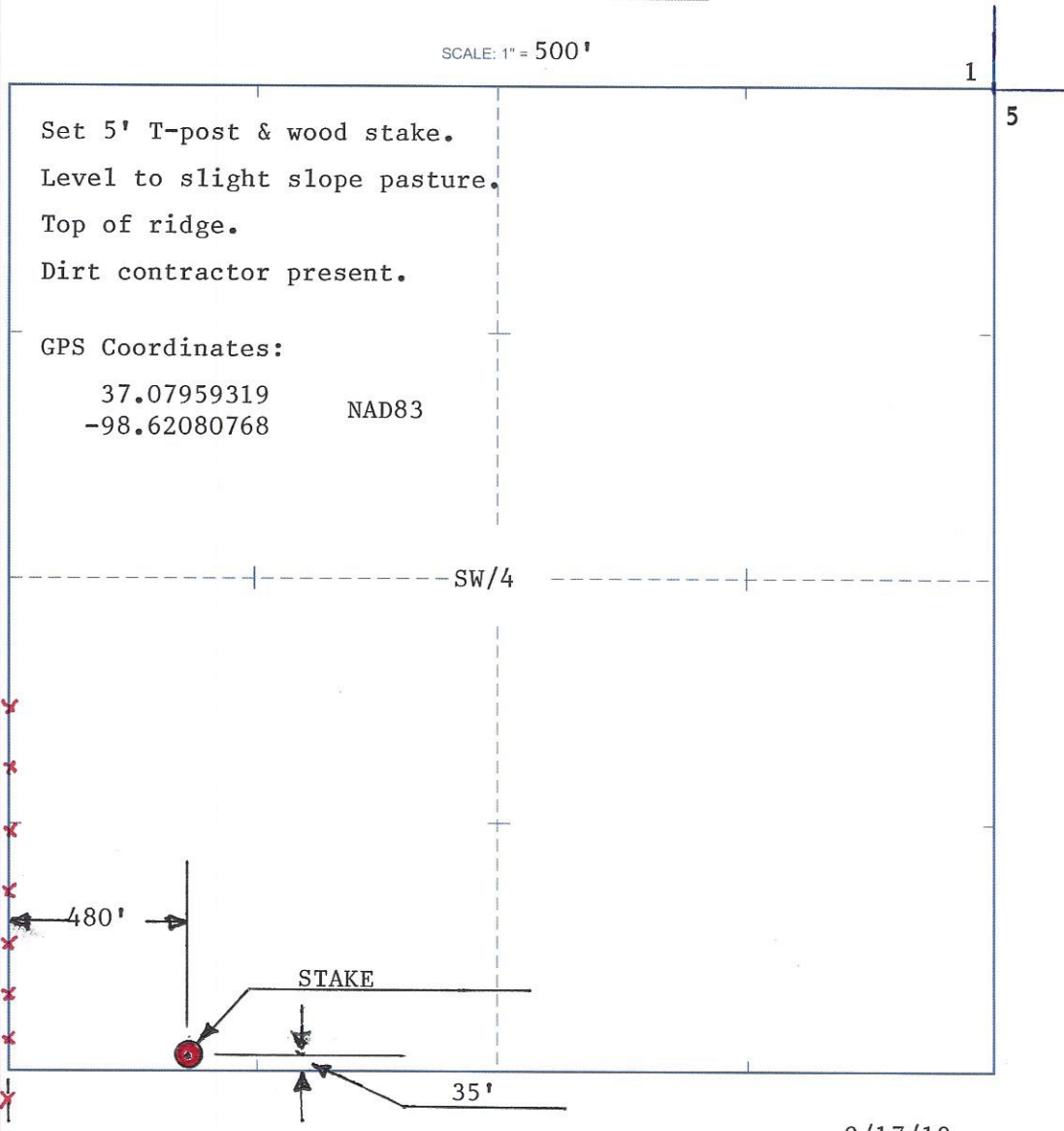
ELEVATION: 1435' GR



SAPPHIRE RESOURCES, LLC  
PO BOX 6690  
45 E. Loucks St. Suite 209  
Sheridan, WY 82801

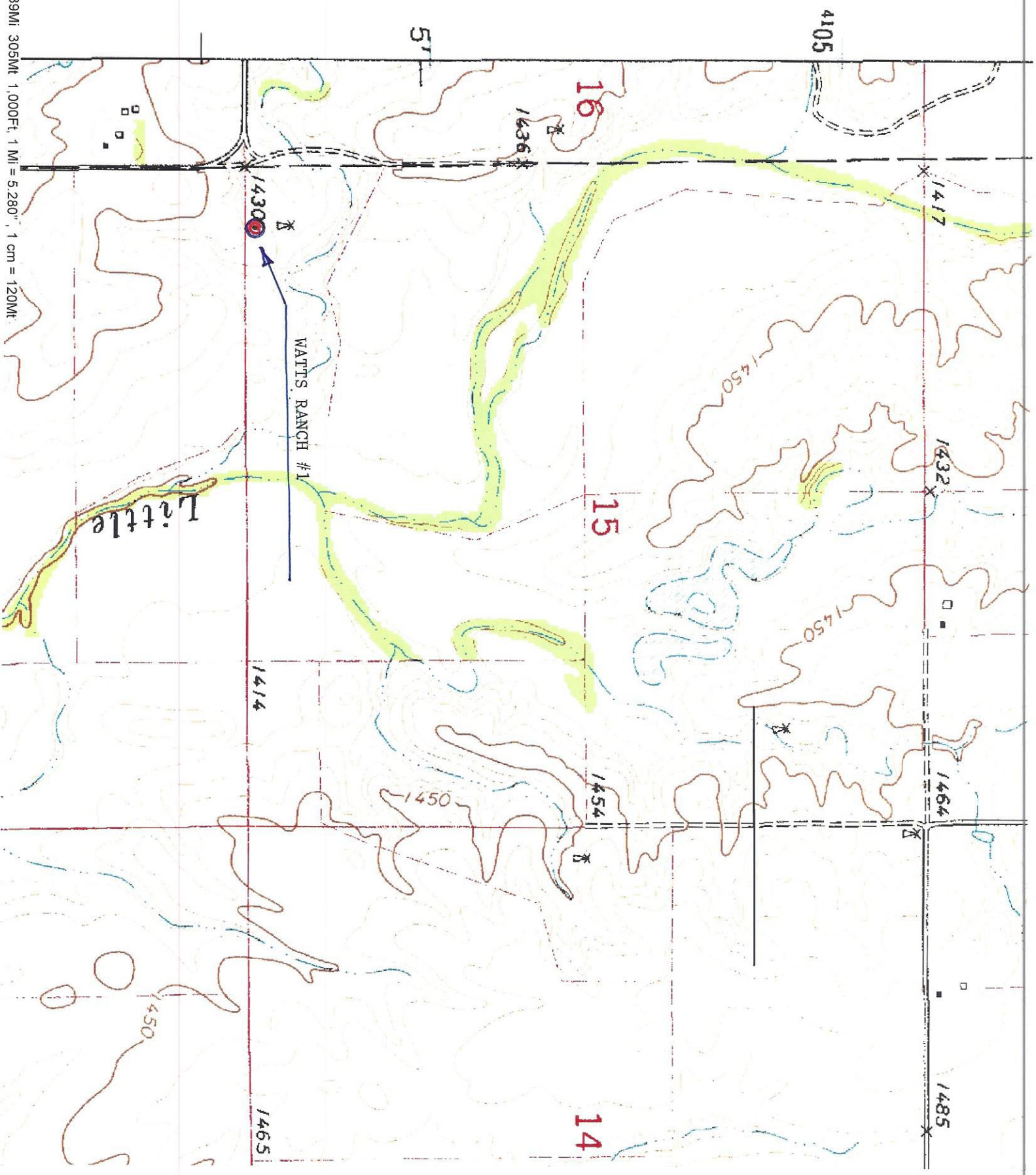
AUTHORIZED BY: Rick Briscoe

SCALE: 1" = 500'



DATE STAKED: 9/17/19

Stubbs, KS' Scale: 1" = 0.189Mi, 305Mt, 1,000Ft, 1 Mi = 5,280', 1 cm = 120Mt



# SAPPHIRE RESOURCES, LLC

WATTS RANCH #1

SEC 15-34s-12w

35' FSL & 480' FWL OF SEC.

BARBER CO, KS

GPS DATUM: NAD83

## Legend



37.07959319 -98.62080768

 37.07959319 -98.62080768

Hargis Rd

Crown Point Rd

800 ft



Google Earth

© 2018 Google