

**ROGER L. MARTIN**  
INDEPENDENT PETROLEUM GEOLOGIST 316-250-6970

**GEOLOGIST'S REPORT**  
DRILLING TIME AND SAMPLE LOG

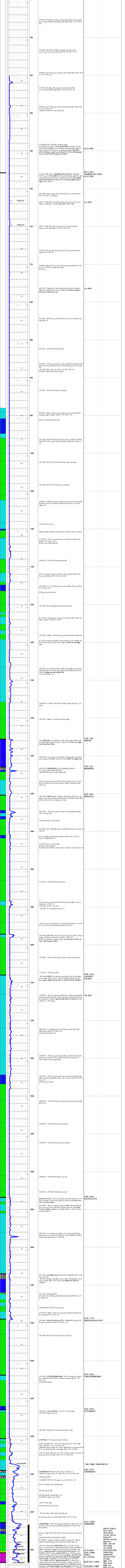
COMPANY <b>VESS OIL CORPORATION</b>		ELEVATIONS	
LEASE <b>MOLEK 'A' #37</b>		KB <b>1368'</b>	GL <b>1359'</b>
FIELD <b>EL DORADO</b>		Measurements Are All From <b>KB</b>	
LOCATION <b>1980' FNL &amp; 2310' FEL</b>		API # <b>15-01-5-24126-0000</b>	
SECTION <b>32</b>	TOWNSHIP <b>25S</b>	RANGE <b>05E</b>	
COUNTY <b>BUTLER</b>	STATE <b>KANSAS</b>		
CONTRACTOR <b>C&amp;G DRILLING, RIG #2</b>		CASING	
SPUD <b>07/16/2019</b>	COMP <b>07/19/2019</b>	SURFACE <b>6.30" 68" 2300' 1.8" wt @ 252'</b> w/150' x 1.5" Class A 3.5% C <sub>2</sub> 2" up	
RTD <b>2467'</b>	LTD <b>n/a</b>	PRODUCTION <b>59 jcs @ 12' 15.50m</b> M-45 wt @ 245' w/150' vs 118C	
No Open Hole E-logs			

FORMATION TOPS	LOG	SAMPLES	CHRONOLOGY
ADMIRE SAND	--	689' (+739)	07152019-MIRU C&G Drilling, Rig #2
OREAD	--	1378' (-47)	07152019- Flank R1 & SFD 12 1/4" hole @ 11.30AM. DTD of 267', set 6.30" 68", 2300' casing @ 232' and cemented 150' vs w/ 28% CC, 2% gel. Plug down @ 5:50PM.
HEEBNER	--	1445' (-47)	
DOUGLAS	--	1485' (-44)	
LANSING	--	1697' (-322)	07172019- Drilled out under surface. Current depth: 515' @ 7:30 AM.
KANSAS CITY	--	1984' (-416)	07182019- Current depth: 2356' @ 7:30AM. Perform bit rip and TH1 w/ vs cone bit.
BASE KANSAS CITY	--	2145' (-777)	
CHECKERBOARD	--	2219' (-811)	07192019- DTD of 2467'. POOH to run DST w/ Vitr. Mud properties: 9.2api, 46-vc, 3000' ECM.
HEFLER SD	--	NONE	
ALTAMONT	--	2265' (-897)	
CHEROKEE	--	2345' (-977)	
ARDMORE	--	2414' (-1046)	
VIOLA	--	2454' (-1086)	
RTD	--	2467' (-1099)	

**REMARKS:**

RH1 w/packer chn. 1 1/2" inner and 5/8" ID of 5 1/2". 15.50m WOB. 55 casing (hooked on jk #2, centralizers on jk #3, #5, #11, #16, #25, and 289). Tagged bottom with landing fit, picked up -12', dropped ball, and packer chn. circulated 1.5 hours, pumped 12 bbls mud flush and cemented w/ 150' x 1.5" class A 3.5% C<sub>2</sub> 2" up @ 11:30AM. 1380' bit had back to track. Float equipment held. Avg lift pressure of 478 psi.

Respectfully submitted,  
Roger L. Martin, Geologist (with title)







**TRILOBITE  
TESTING, INC.**

# DRILL STEM TEST REPORT

Vess Oil Corporation  
1700 N Waterfront Parkway  
Building 500  
Wichita, KS 67206-6619  
ATTN: Dylan Klaus/Roger Ma

**32-25S-5E Butler, KS**

**Moler A #37**

Job Ticket: 63947

**DST#: 1**

Test Start: 2019.07.19 @ 02:43:00

## GENERAL INFORMATION:

Formation: **Viola**

Deviated: No Whipstock: ft (KB)

Time Tool Opened: 04:32:00

Time Test Ended: 10:33:00

Test Type: Conventional Bottom Hole (Initial)

Tester: Jimmy Ricketts

Unit No: 65

**Interval: 2417.00 ft (KB) To 2467.00 ft (KB) (TVD)**

Reference Elevations: 1368.00 ft (KB)

Total Depth: 2467.00 ft (KB) (TVD)

1359.00 ft (CF)

Hole Diameter: 7.88 inches Hole Condition: Fair

KB to GR/CF: 9.00 ft

**Serial #: 8369 Inside**

Press@RunDepth: 110.27 psig @ 2429.00 ft (KB)

Capacity: 8000.00 psig

Start Date: 2019.07.19

End Date:

2019.07.19

Last Calib.:

2019.07.19

Start Time:

02:43:01

End Time:

10:33:00

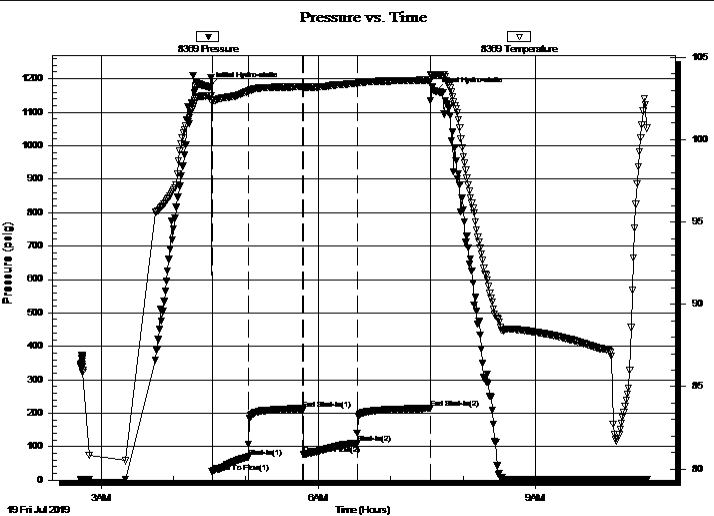
Time On Btm:

2019.07.19 @ 04:30:00

Time Off Btm:

2019.07.19 @ 07:37:00

TEST COMMENT: IF - Weak blow building to 8"  
FF - Weak blow building to 6"



## PRESSURE SUMMARY

Time (Min.)	Pressure (psig)	Temp (deg F)	Annotation
0	1175.38	102.66	Initial Hydro-static
2	24.74	102.25	Open To Flow (1)
32	69.42	102.93	Shut-In(1)
77	213.25	103.21	End Shut-In(1)
78	76.71	103.18	Open To Flow (2)
122	110.27	103.42	Shut-In(2)
183	214.52	103.62	End Shut-In(2)
187	1162.17	103.95	Final Hydro-static

## Recovery

Length (ft)	Description	Volume (bbl)
135.00	OCM 13%O & 87% M	0.66
90.00	Clean Oil 100% O	0.53
0.00	TS O&SWCM 24%O 7%W 69%M	0.00

## Gas Rates

	Choke (inches)	Pressure (psig)	Gas Rate (Mcf/d)