



# T27S, R40W, 6th P.M.

## LEGEND:

- = PROPOSED WELLHEAD.
- = TARGET BOTTOM HOLE.
- ▲ = SECTION CORNERS LOCATED.
- \* = EXISTING WELLS

LINE TABLE		
LINE	DIRECTION	LENGTH
L1	S02°14'20"E	281.68'

5/8" Rebar,  
Flush w/Ground  
(SP NAD 27)  
(KANSAS SOUTH)  
N: 379626.11  
E: 1061466.20

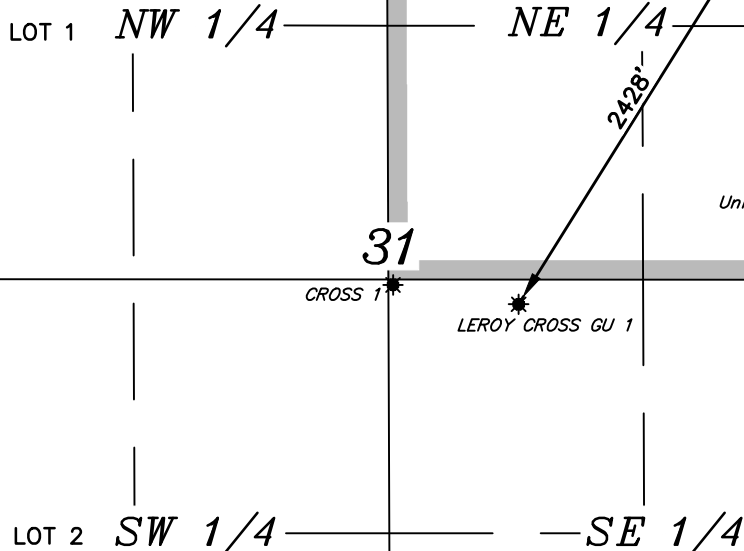
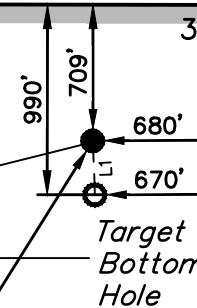
25 30  
36 31  
R R  
41 40  
W W

N89°52'58"W - 4857.30' (Meas.)

30 29  
31 32

Rebar w/Yellow  
Plastic Cap  
(SP NAD 27)  
(KANSAS SOUTH)  
N: 379447.73  
E: 1066319.26

**PENNY 1-31**  
Elev. Ungraded  
Ground = 3270.1'



5/8" Rebar, 1.5'  
Below Ground  
(SP NAD 27)  
(KANSAS SOUTH)  
N: 374337.87  
E: 1061267.81

T27S 36 31  
T28S 1 6

S89°57'22"W - 4895.25' (Meas.)

9/16" Bolt, 0.5'  
Below Ground  
(SP NAD 27)  
(KANSAS SOUTH)  
N: 374171.83  
E: 1066159.28



### CERTIFICATE

THIS IS TO CERTIFY THAT THE ABOVE PLAT WAS PREPARED FROM FIELD NOTES OF ACTUAL SURVEYS MADE BY ME OR UNDER MY SUPERVISION AND THAT THE SAME ARE TRUE AND CORRECT TO THE BEST OF MY KNOWLEDGE AND BELIEF.



<b>NAD 83 (SURFACE LOCATION)</b>	<b>NAD 83 (TARGET BOTTOM HOLE)</b>
LATITUDE = 37°39'44.95" (37.662485)	LATITUDE = 37°39'42.16" (37.661712)
LONGITUDE = 101°43'44.36" (101.728989)	LONGITUDE = 101°43'44.22" (101.728951)
<b>NAD 27 (SURFACE LOCATION)</b>	<b>NAD 27 (TARGET BOTTOM HOLE)</b>
LATITUDE = 37°39'44.89" (37.662470)	LATITUDE = 37°39'42.11" (37.661697)
LONGITUDE = 101°43'42.74" (101.728539)	LONGITUDE = 101°43'42.60" (101.728501)
<b>STATE PLANE NAD 83 (KANSAS SOUTH)</b>	<b>STATE PLANE NAD 83 (KANSAS SOUTH)</b>
N: 1691115.90 E: 377845.33	N: 1690834.28 E: 377846.56
<b>STATE PLANE NAD 27 (KANSAS SOUTH)</b>	<b>STATE PLANE NAD 27 (KANSAS SOUTH)</b>
N: 378764.60 E: 1065618.72	N: 378482.98 E: 1065619.96

### NOTE:

- Distances referenced on plat to section lines are perpendicular.

**BASIS OF BEARINGS**  
BASIS OF BEARINGS IS A G.P.S. OBSERVATION

**BASIS OF ELEVATION**  
ELEVATION 3321.1' WAS DERIVED FROM AN NGS MARKER (2K3 A) AT THE STANTON COUNTY AIRPORT LAT: 37°34'59.01" LONG: 101°44'03.32" AND HAS A DATUM OF NAVD88.



**UELS, LLC**  
Corporate Office \* 85 South 200 East  
Vernal, UT 84078 \* (435) 789-1017



## MERIT ENERGY COMPANY

**PENNY 1-31**  
**709' FNL 680' FEL**  
**NE 1/4 NE 1/4, SECTION 31, T27S, R40W, 6th P.M.**  
**STANTON COUNTY, KANSAS**

<b>SURVEYED BY</b>	J.P.	09-17-19	<b>SCALE</b>
<b>DRAWN BY</b>	D.J.S.	09-19-19	1" = 1000'
<b>WELL LOCATION PLAT</b>			

# T27S, R40W, 6th P.M.

## LEGEND:

- = PROPOSED WELLHEAD.
- = TARGET BOTTOM HOLE.
- ▲ = SECTION CORNERS LOCATED.
- \* = EXISTING WELLS

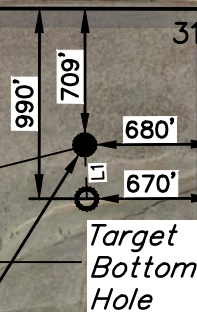
LINE TABLE		
LINE	DIRECTION	LENGTH
L1	S02°14'20"E	281.68'

5/8" Rebar,  
Flush w/Ground  
(SP NAD 27)  
(KANSAS SOUTH)  
N: 379626.11  
E: 1061466.20

25 30  
36 31  
R R  
41 40  
W W

N89°52'58"W - 4857.30' (Meas.)

**PENNY 1-31**  
Elev. Ungraded  
Ground = 3270.1'



Rebar w/Yellow  
Plastic Cap  
(SP NAD 27)  
(KANSAS SOUTH)  
N: 379447.73  
E: 1066319.26

LOT 1 NW 1/4

NE 1/4

31

CROSS 1

LEROY CROSS GU 1

Unit Boundary

LOT 2 SW 1/4

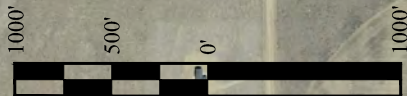
SE 1/4

5/8" Rebar, 1.5'  
Below Ground  
(SP NAD 27)  
(KANSAS SOUTH)  
N: 374337.87  
E: 1061267.81

T27S 36 31  
T28S 1 6

S89°57'22"W - 4895.25' (Meas.)

9/16" Bolt, 0.5'  
Below Ground  
(SP NAD 27)  
(KANSAS SOUTH)  
N: 374171.83  
E: 1066159.28



## CERTIFICATE

THIS IS TO CERTIFY THAT THE ABOVE PLAT WAS PREPARED FROM FIELD NOTES OF ACTUAL SURVEYS MADE BY ME OR UNDER MY SUPERVISION, AND THAT THE SAME ARE TRUE AND CORRECT TO THE BEST OF MY KNOWLEDGE AND BELIEF.



<b>NAD 83 (SURFACE LOCATION)</b>	<b>NAD 83 (TARGET BOTTOM HOLE)</b>
LATITUDE = 37°39'44.95" (37.662485)	LATITUDE = 37°39'42.16" (37.661712)
LONGITUDE = 101°43'44.36" (101.728989)	LONGITUDE = 101°43'44.22" (101.728951)
<b>NAD 27 (SURFACE LOCATION)</b>	<b>NAD 27 (TARGET BOTTOM HOLE)</b>
LATITUDE = 37°39'44.89" (37.662470)	LATITUDE = 37°39'42.11" (37.661697)
LONGITUDE = 101°43'42.74" (101.728539)	LONGITUDE = 101°43'42.60" (101.728501)
<b>STATE PLANE NAD 83 (KANSAS SOUTH)</b>	<b>STATE PLANE NAD 83 (KANSAS SOUTH)</b>
N: 1691115.90 E: 377845.33	N: 1690834.28 E: 377846.56
<b>STATE PLANE NAD 27 (KANSAS SOUTH)</b>	<b>STATE PLANE NAD 27 (KANSAS SOUTH)</b>
N: 378764.60 E: 1065618.72	N: 378482.98 E: 1065619.96

## NOTE:

- Distances referenced on plat to section lines are perpendicular.

## BASIS OF BEARINGS

BASIS OF BEARINGS IS A G.P.S. OBSERVATION

## BASIS OF ELEVATION

ELEVATION 3321.1' WAS DERIVED FROM AN NGS MARKER (2K3 A) AT THE STANTON COUNTY AIRPORT LAT: 37°34'59.01" LONG: 101°44'03.32" AND HAS A DATUM OF NAVD88.

## UELS, LLC

Corporate Office \* 85 South 200 East  
Vernal, UT 84078 \* (435) 789-1017



## MERIT ENERGY COMPANY

**PENNY 1-31**  
**709' FNL 680' FEL**  
**NE 1/4 NE 1/4, SECTION 31, T27S, R40W, 6th P.M.**  
**STANTON COUNTY, KANSAS**

SURVEYED BY	J.P.	09-17-19	SCALE
DRAWN BY	D.J.S.	09-19-19	1" = 1000'

## WELL LOCATION PLAT

BEGINNING AT THE INTERSECTION OF US HIGHWAY 160 & KS-27 N IN JOHNSON CITY, KANSAS PROCEED IN A NORTHERLY DIRECTION ALONG KS-27 N APPROXIMATELY 5.0 MILES TO THE JUNCTION OF THIS ROAD AND AN EXISTING ROAD TO THE EAST; TURN RIGHT AND PROCEED IN AN EASTERLY DIRECTION APPROXIMATELY 1.9 MILES TO THE JUNCTION OF THIS ROAD AND AN EXISTING ROAD TO THE NORTH; TURN LEFT AND PROCEED IN A NORTHERLY DIRECTION APPROXIMATELY 0.9 MILES. FROM THIS POINT, THE PROPOSED WELL LOCATION IS APPROXIMATELY 680' WESTERLY.

TOTAL DISTANCE FROM JOHNSON CITY, KANSAS TO THE PROPOSED WELL LOCATION IS 7.9 MILES.

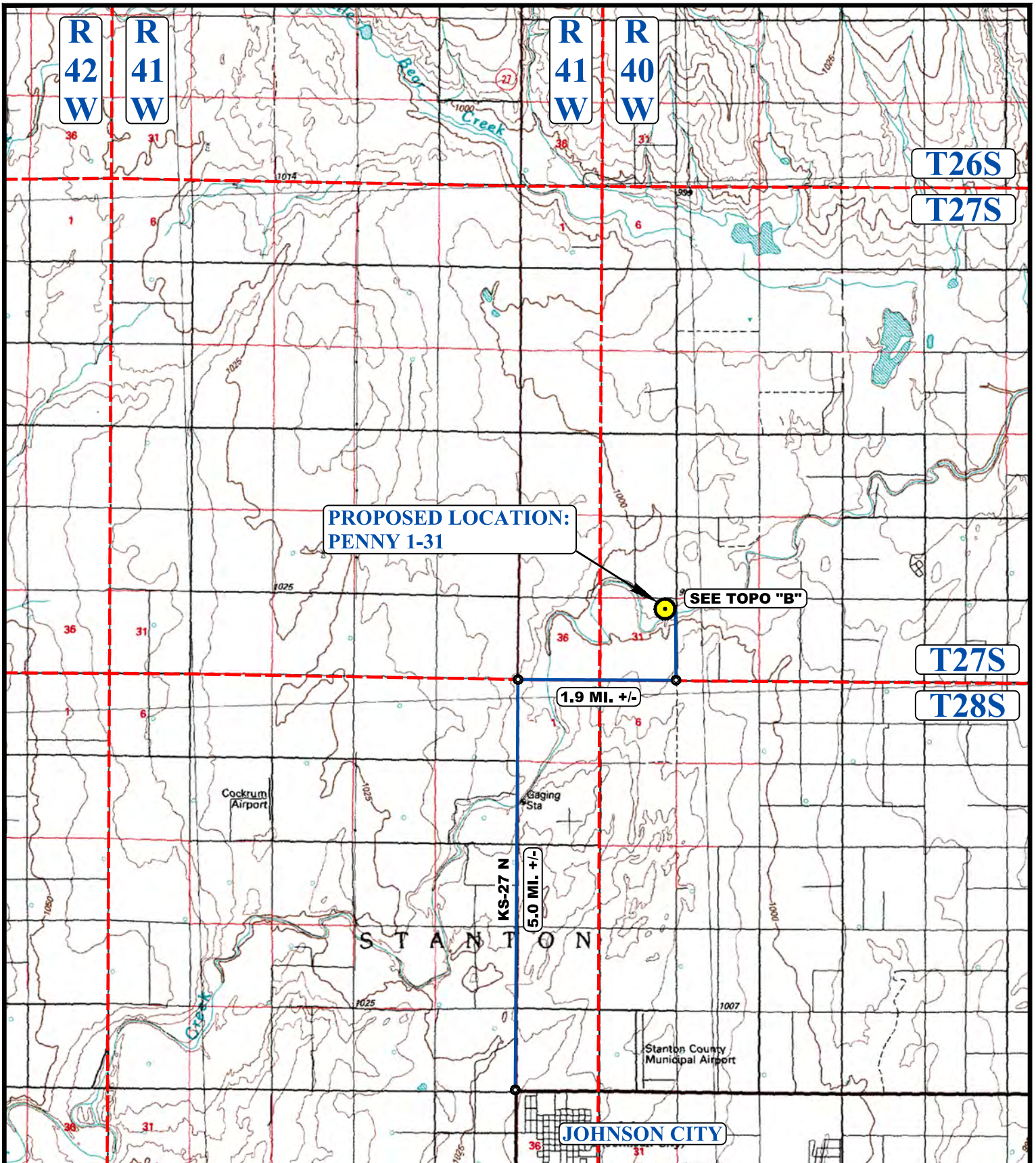
**MERIT ENERGY COMPANY**

**PENNY 1-31  
709' FNL 680' FEL  
NE 1/4 NE 1/4, SECTION 31, T27S, R40W, 6th P.M.  
STANTON COUNTY, KANSAS**

<b>SURVEYED BY</b>	J.P.	09-17-19	
<b>DRAWN BY</b>	D.J.S.	09-19-19	
<b>ROAD DESCRIPTION</b>			



**UELS, LLC**  
Corporate Office \* 85 South 200 East  
Vernal, UT 84078 \* (435) 789-1017



**PROPOSED LOCATION:  
PENNY 1-31**

**SEE TOPO "B"**

**1.9 MI. +/-**

**5.0 MI. +/-**

**STANTON**

**JOHNSON CITY**

**LEGEND:**

 **PROPOSED LOCATION**



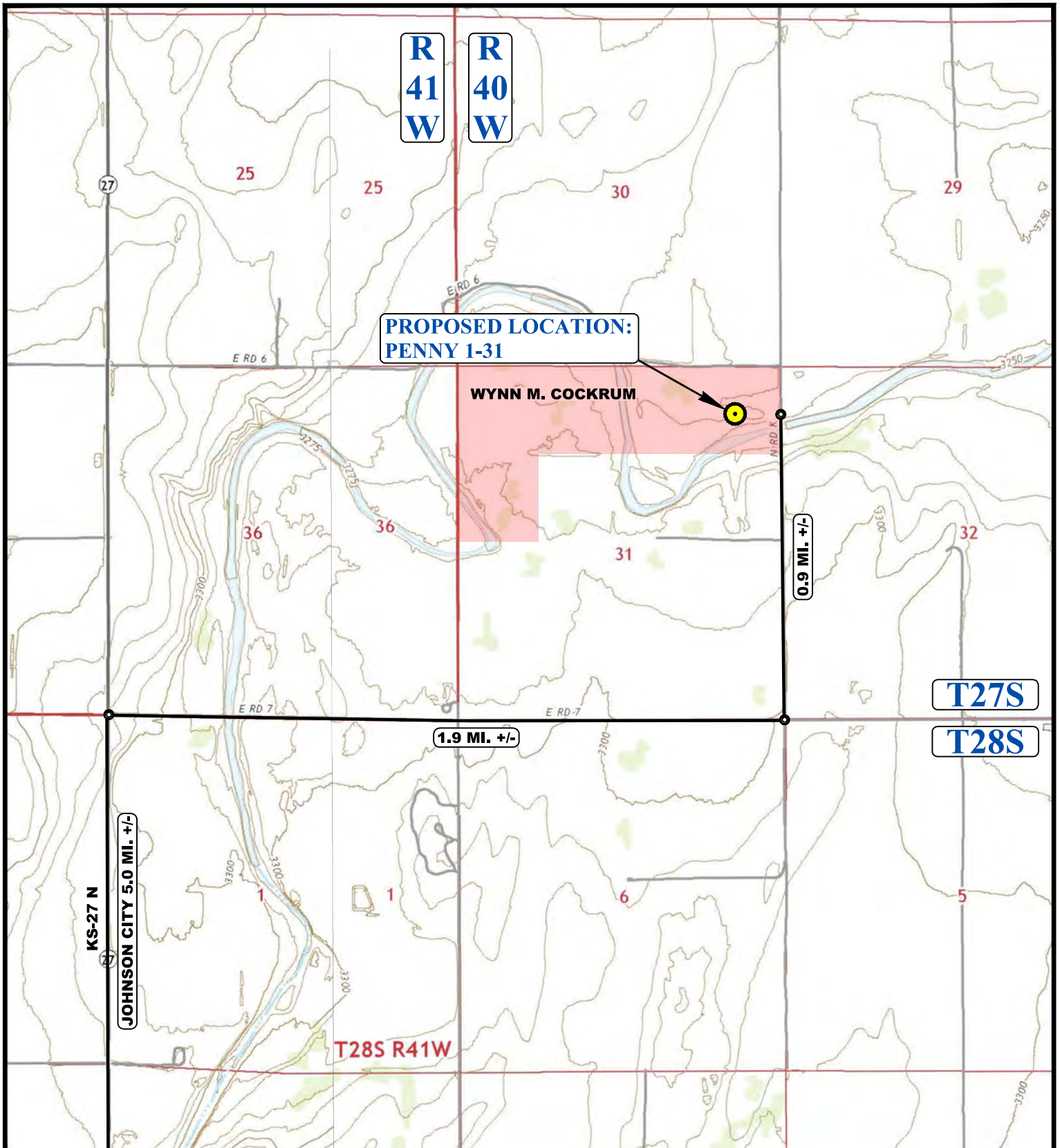
**MERIT ENERGY COMPANY**

**PENNY 1-31**  
**709' FNL 680' FEL**  
**NE 1/4 NE 1/4, SECTION 31, T27S, R40W, 6th P.M.**  
**STANTON COUNTY, KANSAS**

<b>SURVEYED BY</b>	J.P.	09-17-19	<b>SCALE</b>
<b>DRAWN BY</b>	D.J.S.	09-19-19	1 : 100,000
<b>ACCESS ROAD MAP</b>			<b>TOPO A</b>



**UELS, LLC**  
 Corporate Office \* 85 South 200 East  
 Vernal, UT 84078 \* (435) 789-1017



NOTE: PARCEL DATA SHOWN HAS BEEN OBTAINED FROM VARIOUS SOURCES AND SHOULD BE USED FOR MAPPING, GRAPHIC AND PLANNING PURPOSES ONLY. NO WARRANTY IS MADE BY UINTAH ENGINEERING AND LAND SURVEYING (UELS) FOR ACCURACY OF THE PARCEL DATA.

**LEGEND:**

-  PROPOSED LOCATION
-  EXISTING ROAD



**MERIT ENERGY COMPANY**

**PENNY 1-31**  
**709' FNL 680' FEL**  
 NE 1/4 NE 1/4, SECTION 31, T27S, R40W, 6th P.M.  
 STANTON COUNTY, KANSAS

SURVEYED BY	J.P.	09-17-19	SCALE
DRAWN BY	D.J.S.	09-19-19	1 : 24,000
<b>ACCESS ROAD MAP</b>			<b>TOPO B</b>



**UELS, LLC**  
 Corporate Office \* 85 South 200 East  
 Vernal, UT 84078 \* (435) 789-1017