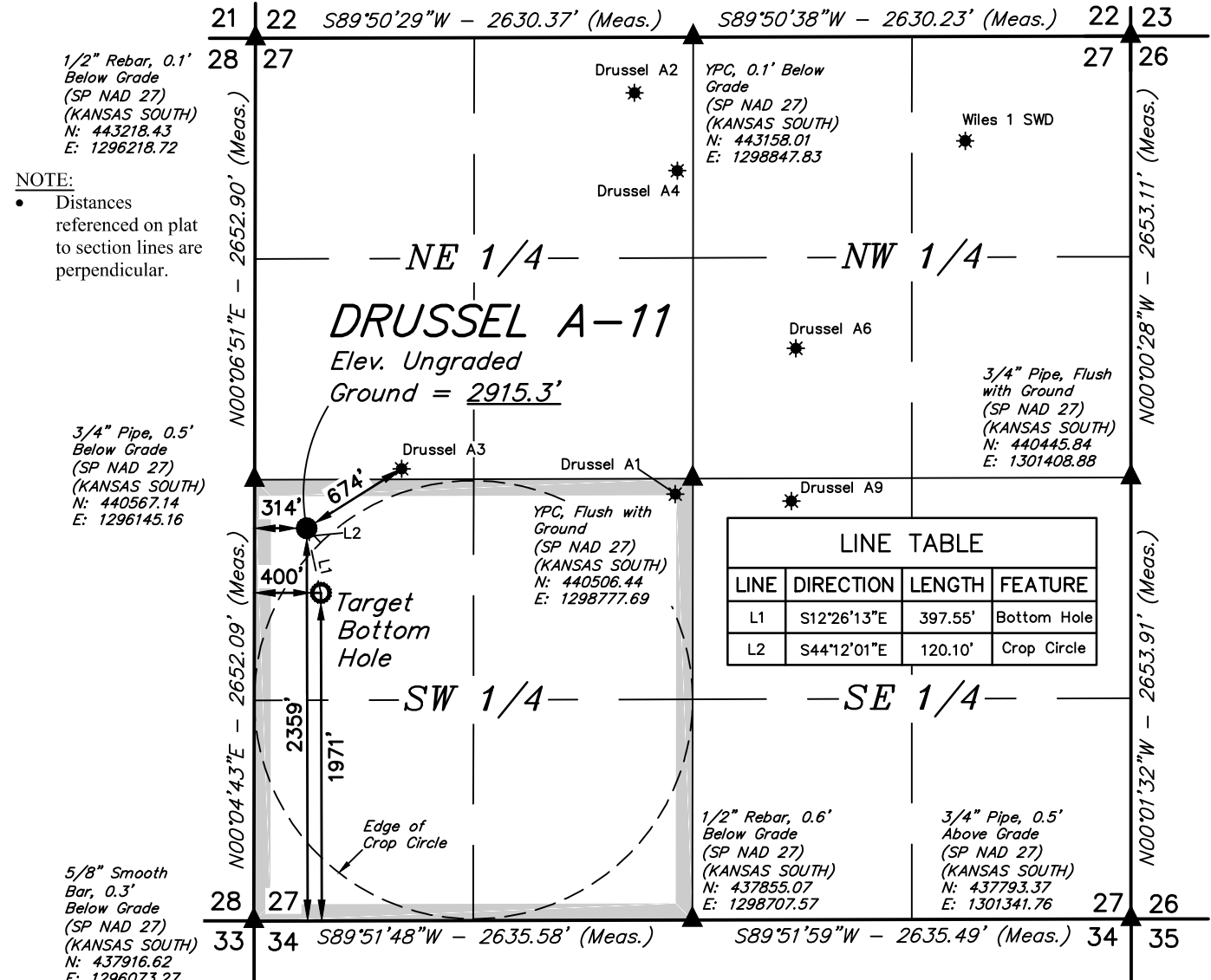


T25S, R33W, 6th P.M.

1/2" Pipe, 0.4'
Below Grade
(SP NAD 27)
(KANSAS SOUTH)
N: 443097.48
E: 1301476.79

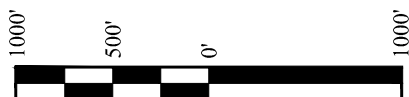
LEGEND:

- = PROPOSED WELLHEAD.
- = TARGET BOTTOM HOLE.
- ▲ = SECTION CORNERS LOCATED.
- * = EXISTING WELLS.



NOTE:
• Distances referenced on plat to section lines are perpendicular.

LINE TABLE			
LINE	DIRECTION	LENGTH	FEATURE
L1	S12°26'13"E	397.55'	Bottom Hole
L2	S44°12'01"E	120.10'	Crop Circle



NAD 83 (SURFACE LOCATION)	NAD 83 (TARGET BOTTOM HOLE)
LATITUDE = 37°51'02.11" (37.850585)	LATITUDE = 37°50'58.27" (37.849519)
LONGITUDE = 100°56'14.53" (100.937370)	LONGITUDE = 100°56'13.46" (100.937073)
NAD 27 (SURFACE LOCATION)	NAD 27 (TARGET BOTTOM HOLE)
LATITUDE = 37°51'02.02" (37.850561)	LATITUDE = 37°50'58.18" (37.849495)
LONGITUDE = 100°56'12.94" (100.936927)	LONGITUDE = 100°56'11.87" (100.936630)
STATE PLANE NAD 83 (KANSAS SOUTH)	STATE PLANE NAD 83 (KANSAS SOUTH)
N: 1752622.19 E: 608673.85	N: 1752231.97 E: 608749.42
STATE PLANE NAD 27 (KANSAS SOUTH)	STATE PLANE NAD 27 (KANSAS SOUTH)
N: 440267.19 E: 1296450.73	N: 439876.99 E: 1296526.31

CERTIFICATE
THIS IS TO CERTIFY THAT THE ABOVE PLAT WAS PREPARED FROM FIELD NOTES OF ACTUAL SURVEYS MADE BY ME OR UNDER MY SUPERVISION AND THAT THE SAME ARE TRUE AND CORRECT TO THE BEST OF MY KNOWLEDGE AND BELIEF.



BASIS OF BEARINGS
BASIS OF BEARINGS IS A G.P.S. OBSERVATION

BASIS OF ELEVATION
BASED ON NGS CONTROL STATION WITH A PUBLISHED ELEVATION OF 2848.98' (NAVD88) AND A PUBLISHED POSITION OF LAT: N37°58'08.98901" LONG: W100°54'04.80320" (NAVD83(2011)).



UELS, LLC
Corporate Office * 85 South 200 East
Vernal, UT 84078 * (435) 789-1017



MERIT ENERGY COMPANY

DRUSSEL A-11
2359' FSL 314' FWL
NW 1/4 SW 1/4, SECTION 27, T25S, R33W, 6th P.M.
FINNEY COUNTY, KANSAS

SURVEYED BY	J.P.	09-18-19	SCALE
DRAWN BY	T.B.S.	09-20-19	1" = 1000'

WELL LOCATION PLAT

T25S, R33W, 6th P.M.

LEGEND:

- = PROPOSED WELLHEAD.
- = TARGET BOTTOM HOLE.
- ▲ = SECTION CORNERS LOCATED.
- ★ = EXISTING WELLS.

1/2" Pipe, 0.4'
Below Grade
(SP NAD 27)
(KANSAS SOUTH)
N: 443097.48
E: 1301476.79

1/2" Rebar, 0.1'
Below Grade
(SP NAD 27)
(KANSAS SOUTH)
N: 443218.43
E: 1296218.72

YPC, 0.1' Below
Grade
(SP NAD 27)
(KANSAS SOUTH)
N: 443158.01
E: 1298847.83

Wiles 1 SWD

NOTE:

- Distances referenced on plat to section lines are perpendicular.

3/4" Pipe, 0.5'
Below Grade
(SP NAD 27)
(KANSAS SOUTH)
N: 440567.14
E: 1296145.16

YPC, Flush with
Ground
(SP NAD 27)
(KANSAS SOUTH)
N: 440506.44
E: 1298777.69

3/4" Pipe, Flush
with Ground
(SP NAD 27)
(KANSAS SOUTH)
N: 440445.84
E: 1301408.88

LINE TABLE			
LINE	DIRECTION	LENGTH	FEATURE
L1	S12°26'13"E	397.55'	Bottom Hole
L2	S44°12'01"E	120.10'	Crop Circle

5/8" Smooth
Bar, 0.3'
Below Grade
(SP NAD 27)
(KANSAS SOUTH)
N: 437916.62
E: 1296073.27

1/2" Rebar, 0.6'
Below Grade
(SP NAD 27)
(KANSAS SOUTH)
N: 437855.07
E: 1298707.57

3/4" Pipe, 0.5'
Above Grade
(SP NAD 27)
(KANSAS SOUTH)
N: 437793.37
E: 1301341.76



NAD 83 (SURFACE LOCATION)	NAD 83 (TARGET BOTTOM HOLE)
LATITUDE = 37°51'02.11" (37.850585)	LATITUDE = 37°50'58.27" (37.849519)
LONGITUDE = 100°56'14.53" (100.937370)	LONGITUDE = 100°56'13.46" (100.937073)
NAD 27 (SURFACE LOCATION)	NAD 27 (TARGET BOTTOM HOLE)
LATITUDE = 37°51'02.02" (37.850561)	LATITUDE = 37°50'58.18" (37.849495)
LONGITUDE = 100°56'12.94" (100.936927)	LONGITUDE = 100°56'11.87" (100.936630)
STATE PLANE NAD 83 (KANSAS SOUTH)	STATE PLANE NAD 83 (KANSAS SOUTH)
N: 1752622.19 E: 608673.85	N: 1752231.97 E: 608749.42
STATE PLANE NAD 27 (KANSAS SOUTH)	STATE PLANE NAD 27 (KANSAS SOUTH)
N: 440267.19 E: 1296450.73	N: 439876.99 E: 1296526.31

CERTIFICATE

THIS IS TO CERTIFY THAT THE ABOVE PLAT WAS PREPARED FROM FIELD NOTES OF ACTUAL SURVEYS MADE BY ME OR UNDER MY SUPERVISION AND THAT THE SAME ARE TRUE AND CORRECT TO THE BEST OF MY KNOWLEDGE AND BELIEF.

REGISTERED LAND SURVEYOR
REG. NO. 14484
STATE OF KANSAS

2019-20-19

BASIS OF BEARINGS

BASIS OF BEARINGS IS A G.P.S. OBSERVATION

BASIS OF ELEVATION

BASED ON NGS CONTROL STATION WITH A PUBLISHED ELEVATION OF 2848.98' (NAVD88) AND A PUBLISHED POSITION OF LAT: N37°58'08.98901" LONG: W100°54'04.80320" (NAVD83(2011)).



MERIT ENERGY COMPANY

DRUSSEL A-11
2359' FSL 314' FWL
NW 1/4 SW 1/4, SECTION 27, T25S, R33W, 6th P.M.
FINNEY COUNTY, KANSAS

SURVEYED BY	J.P.	09-18-19	SCALE
DRAWN BY	T.B.S.	09-20-19	1" = 1000'

WELL LOCATION PLAT



UELS, LLC
Corporate Office * 85 South 200 East
Vernal, UT 84078 * (435) 789-1017

BEGINNING AT THE INTERSECTION OF US-83 BUSINESS AND KS-156 IN GARDEN CITY, KANSAS PROCEED IN A SOUTHWESTERLY, THEN SOUTHEASTERLY DIRECTION ALONG US-83 BUSINESS APPROXIMATELY 3.2 MILES TO THE JUNCTION OF THIS ROAD AND US-83; TURN RIGHT AND PROCEED IN A SOUTHERLY DIRECTION APPROXIMATELY 5.5 MILES TO THE JUNCTION OF THIS ROAD AND E. ANNIE SCHEER RD TO THE WEST; TURN RIGHT AND PROCEED IN A WESTERLY DIRECTION APPROXIMATELY 3.7 MILES. FROM THIS POINT, THE PROPOSED WELL LOCATION IS APPROXIMATELY 2946' SOUTHERLY.

TOTAL DISTANCE FROM GARDEN CITY, KANSAS TO THE PROPOSED WELL LOCATION IS APPROXIMATELY 13.0 MILES.

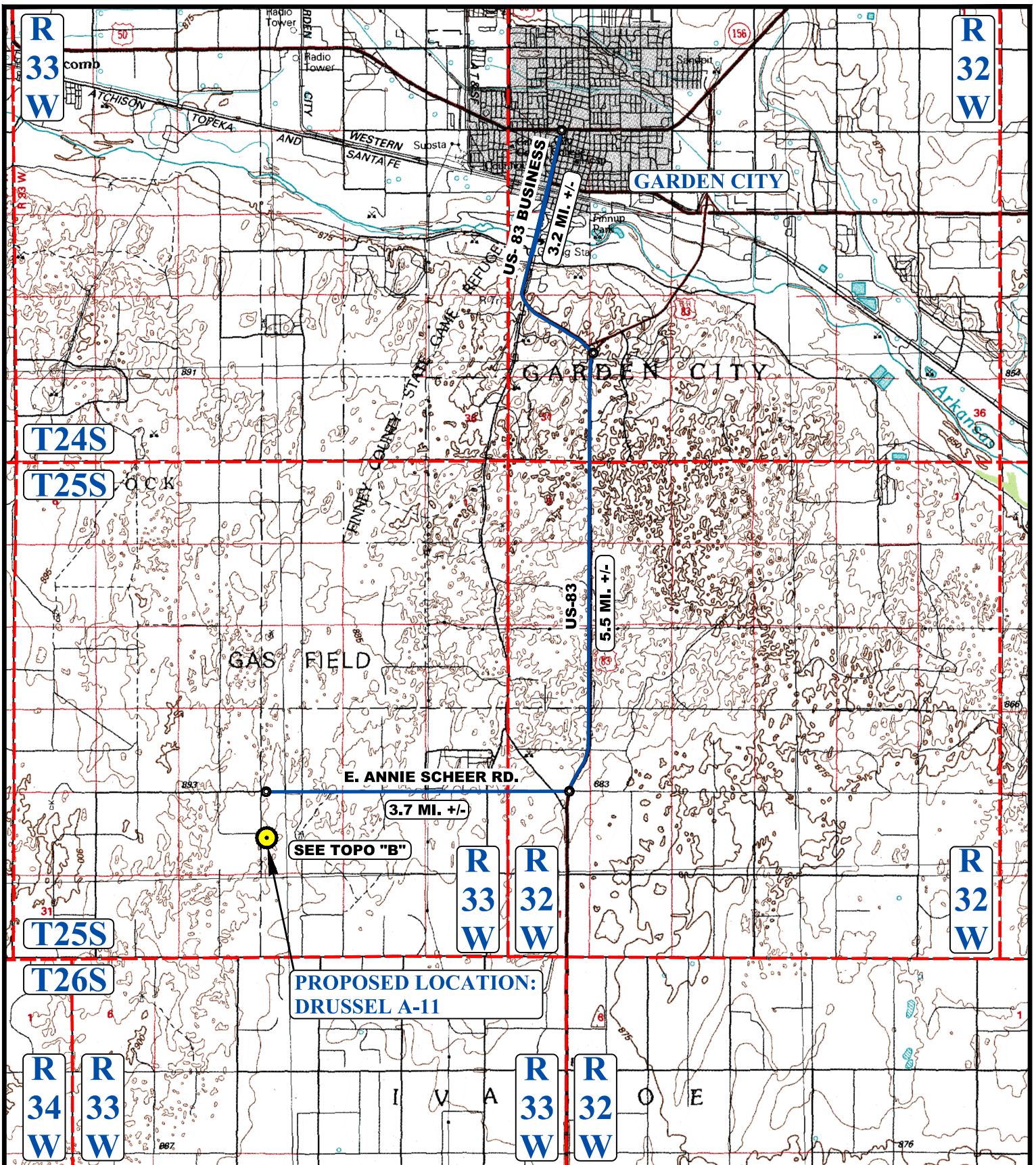
MERIT ENERGY COMPANY

**DRUSSEL A-11
2359' FSL 314' FWL
NW 1/4 SW 1/4, SECTION 27, T25S, R33W, 6th P.M.
FINNEY COUNTY, KANSAS**

SURVEYED BY	J.P.	09-18-19	
DRAWN BY	T.B.S.	09-20-19	
ROAD DESCRIPTION			



UELS, LLC
Corporate Office * 85 South 200 East
Vernal, UT 84078 * (435) 789-1017



LEGEND:

 PROPOSED LOCATION



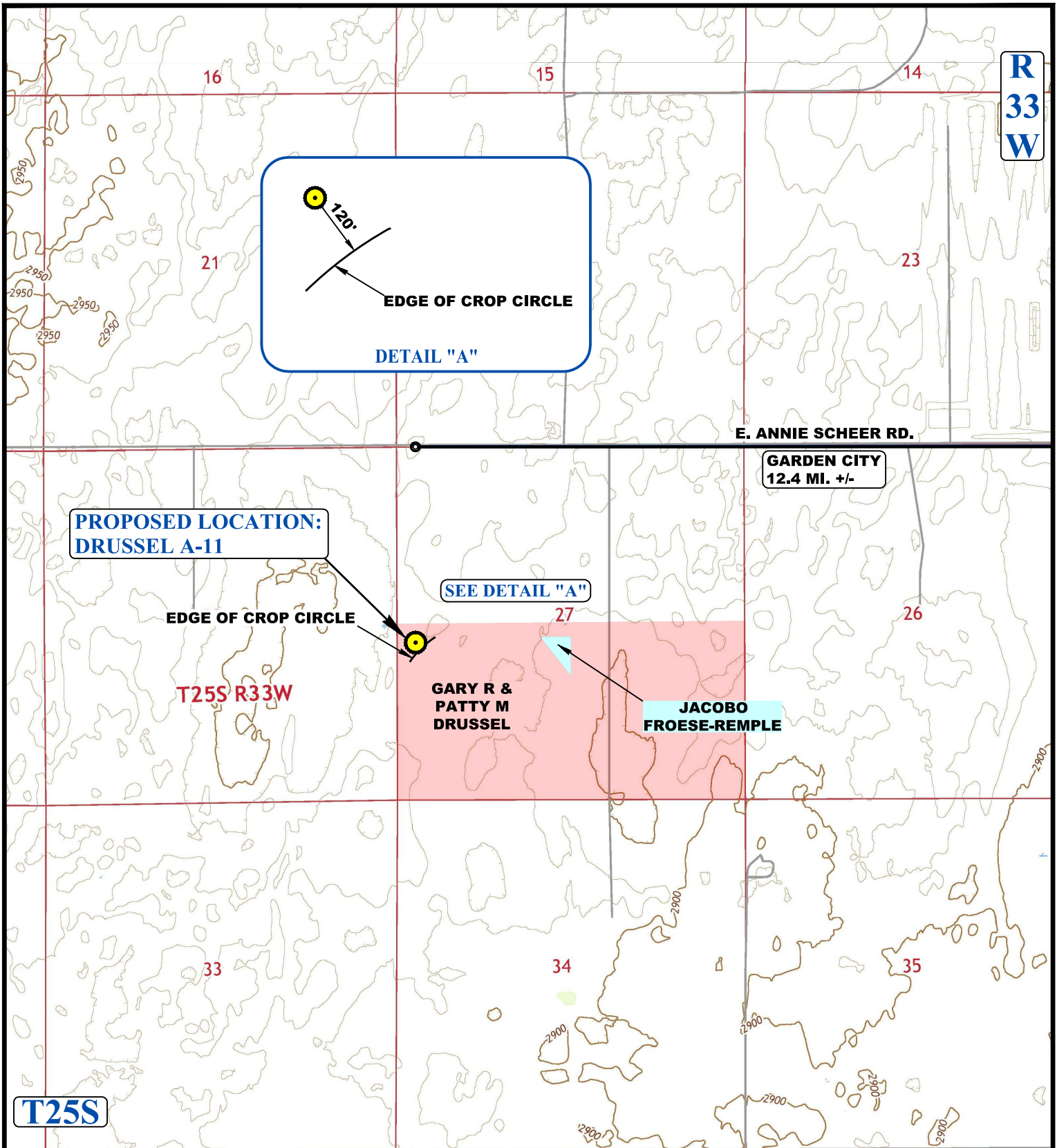
MERIT ENERGY COMPANY

DRUSSEL A-11
 2359' FSL 314' FWL
 NW 1/4 SW 1/4, SECTION 27, T25S, R33W, 6th P.M.
 FINNEY COUNTY, KANSAS



UELS, LLC
 Corporate Office * 85 South 200 East
 Vernal, UT 84078 * (435) 789-1017

SURVEYED BY	J.P.	09-18-19	SCALE
DRAWN BY	T.B.S.	09-20-19	1 : 100,000
ACCESS ROAD MAP			TOPO A



NOTE: PARCEL DATA SHOWN HAS BEEN OBTAINED FROM VARIOUS SOURCES AND SHOULD BE USED FOR MAPPING, GRAPHIC AND PLANNING PURPOSES ONLY. NO WARRANTY IS MADE BY UINTAH ENGINEERING AND LAND SURVEYING (UELS) FOR ACCURACY OF THE PARCEL DATA.

LEGEND:

- EXISTING ROAD
- PROPOSED LOCATION

UINTAH
ENGINEERING & LAND SURVEYING

UELS, LLC
Corporate Office * 85 South 200 East
Vernal, UT 84078 * (435) 789-1017

MERIT ENERGY COMPANY
DRUSSEL A-11
2359' FSL 314' FWL
NW 1/4 SW 1/4, SECTION 27, T25S, R33W, 6th P.M.
FINNEY COUNTY, KANSAS

SURVEYED BY	J.P.	09-18-19	SCALE
DRAWN BY	T.B.S.	09-20-19	1 : 24,000

ACCESS ROAD MAP **TOPO B**