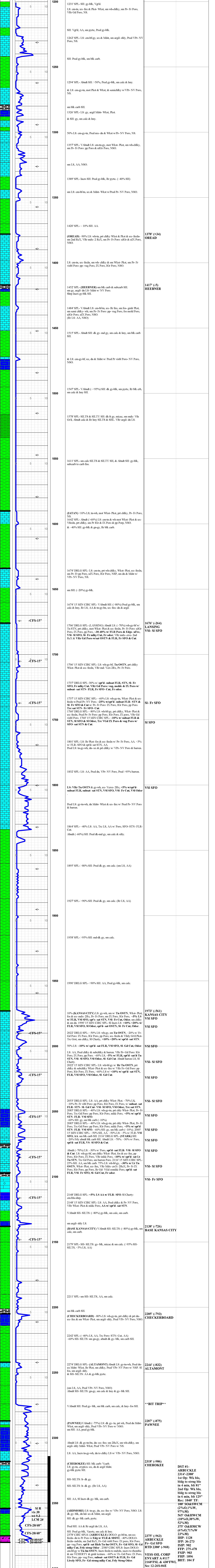


GEOLOGIST'S REPORT
DRILLING TIME AND SAMPLE LOG

COMPANY VESS OIL CORPORATION		ELEVATIONS	
LEASE ENYART A 117		KB 1412'	GL 1403'
FIELD EL DORADO		Measurements Are All From KB	
LOCATION 2160' FSL & 430' FWL		API # 15-015-24128-0000	
SECTION 12 TOWNSHIP 26S RANGE 04E		CONTRACTOR C&G DRILLING, RIG #2	
COUNTY BUTLER STATE KANSAS		SPUD 08/15/2019 COMP 08/18/2019	
CONTRACTOR C&G DRILLING, RIG #2		CASING	
RTD 2380' LTD N/A		SURFACE 6 Jts 8.5/8" 230' FL S	
No Open Hole E-logs		casing set @ 254' w/150 xx	
ELECTRICAL SURVEYS		PRODUCTION N/A-P&A	

FORMATION TOPS	LOG	SAMPLES	CHRONOLOGY
OREAD	--	1378' (+34)	08/14/2019- Finish MIRU C&G Drilling, Rig #2
HEEBNER	--	1417' (-5)	08/15/2019- SPUD well, DTD 268', CTCL, POOH. Run 6 Jts 8.5/8", 230#/ft LS casing. Set casing @ 254', mixed & pumped 150 xx cement & Cure to pits. Plug down @ 51M.
LANSING	--	1676' (-264)	
KANSAS CITY	--	1973' (-661)	
BASE KANSAS CITY	--	2138' (-726)	08/16/2019- Drilled out under surface. DTD 935' @ 7:40AM.
CHECKERBOARD	--	2205' (-793)	08/17/2019- DTD 2225' @ 7:45AM. Bit Trip @ 2274'. RH1 w/ tri-cone bit. Mud wt 9.5 ppg, 35 vis, 1# LCM.
HEPLER SAND	--	NONE	
ALTAMONT	--	2244' (-832)	08/18/2019- DTD 2380', Run DST #1- Arbuclle. Mud wt 9.3 ppg, 50 vis, 1# LCM. Prepare to P&A well. MIRU HSI.
PAWNEE	--	2287' (-875)	
CHEROKEE	--	2318' (-906)	
ARDMORE	--	NONE	
ARBUCCKLE	--	2375' (-963)	
RTD/LTD	--	2380' (-968)	

REMARKS:
The decision was made to P&A the VOC Enyart 'A' #117 test well.
Respectfully submitted,
Roger L. Martin, Geologist (wellbite)





**TRILOBITE
TESTING, INC.**

DRILL STEM TEST REPORT

Vess Oil Corporation
1700 N. Waterfront Parkw ay
Building 500
Wichita, KS. 67206-6619
ATTN: Dylan Klaus/Roger Ma

12/26S/4E Butler, KS
Enyart A #107
Job Ticket: 63948 **DST#: 1**
Test Start: 2019.08.18 @ 06:15:00

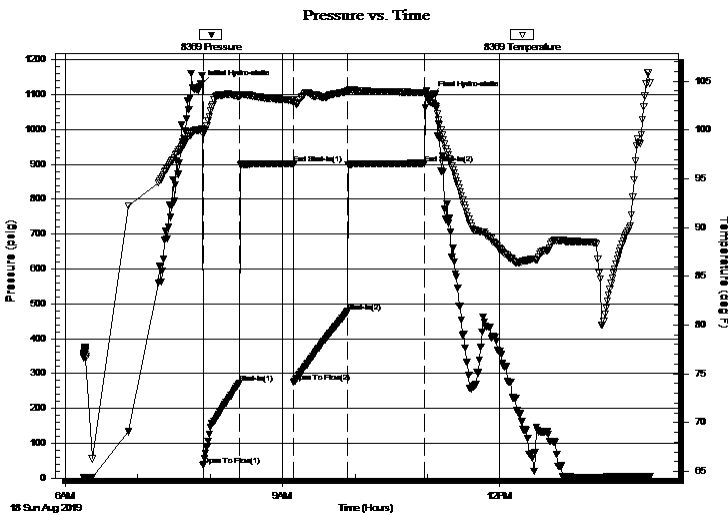
GENERAL INFORMATION:

Formation: **Arbuckle**
Deviated: No Whipstock: ft (KB)
Time Tool Opened: 07:54:00
Time Test Ended: 14:04:09
Interval: **2314.00 ft (KB) To 2380.00 ft (KB) (TVD)**
Total Depth: 2380.00 ft (KB) (TVD)
Hole Diameter: 7.88 inches Hole Condition: Fair
Reference Elevations: 1412.00 ft (KB)
1403.00 ft (CF)
KB to GR/CF: 9.00 ft
Test Type: Conventional Bottom Hole (Initial)
Tester: Jimmy Ricketts
Unit No: 65

Serial #: 8369

Press@RunDepth: 477.69 psig @ ft (KB) Capacity: 8000.00 psig
Start Date: 2019.08.18 End Date: 2019.08.18 Last Calib.: 1899.12.30
Start Time: 06:15:01 End Time: 14:04:10 Time On Btm: 2019.08.18 @ 07:52:30
Time Off Btm: 2019.08.18 @ 11:03:20

TEST COMMENT: IF -Weak blow building to strong blow 4 minutes into initial flow period. Continuing to build to 81 inches.
FF - Weak blow building to strong blow 5 minutes into final flow period. Continuing to build to 129 inches.



PRESSURE SUMMARY

Time (Min.)	Pressure (psig)	Temp (deg F)	Annotation
0	1128.28	100.07	Initial Hydro-static
2	36.15	99.52	Open To Flow (1)
32	273.48	103.43	Shut-In (1)
77	902.04	103.04	End Shut-In (1)
77	275.44	102.81	Open To Flow (2)
122	477.69	103.95	Shut-In (2)
185	902.80	103.80	End Shut-In (2)
191	1096.14	102.77	Final Hydro-static

Recovery

Length (ft)	Description	Volume (bbl)
375.00	O&HMCW 6%O 71%W & 23%M	3.03
565.00	O&HWCM 10%O 38%W & 52%M	7.93
100.00	SO&SWCM 2%O 1% W & 97%M	1.40

Gas Rates

	Choke (inches)	Pressure (psig)	Gas Rate (Mcf/d)