

GEOLOGIST'S REPORT
DRILLING TIME AND SAMPLE LOG

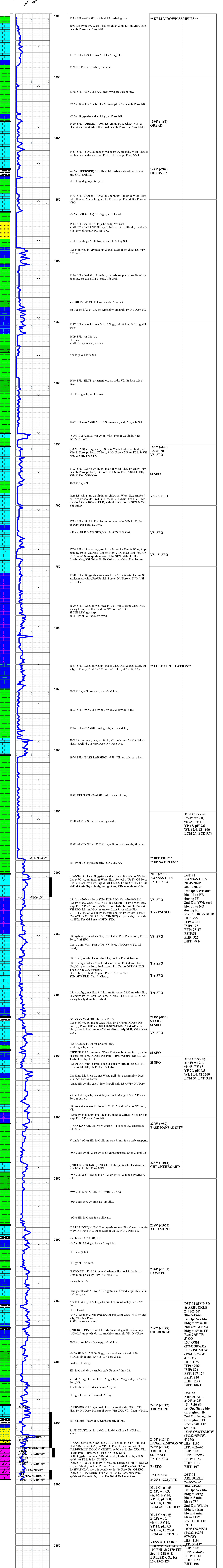
COMPANY VESS OIL CORPORATION LEASE BROWN-SCULLY 'A' #2 FIELD AUGUSTA LOCATION 100' ENL & 2170' FEL SECTION 16 TOWNSHIP 28S RANGE 04E COUNTY BUTLER STATE KANSAS		ELEVATIONS KB 1223' GL 1214' Measurements Are All From KB API # 15-015-24129-0000	
CONTRACTOR C&G DRILLING, RIG #2 SPUD 08/23/2019 COMP 08/29/2019 RTD 2496' LTD N/A ELECTRICAL SURVEYS No Open Hole Electric Logs		CASING SURFACE Set 6 Its 8 5/8" 230#/LS casing @ 266 KB w/150 sx. PRODUCTION N/A-P&A	

FORMATION TOPS	LOG	SAMPLES	CHRONOLOGY
OREAD	--	1386' (-163)	08/23/2019- SPUD 12 1/4" hole. DTD 266', set Plug down @ 5:45PM.
HEEBNER	--	1425' (-202)	08/24/2019- Drill out under surface @ 3:30 AM. DTD 465' @ 7:00AM.
LANSING	--	1652' (-429)	08/25/2019- DTD 1925' @ 7:00AM. TOOTH w/PDC bit & switched to tri-cone @ 1988'. Mud wt 9.0 ppg, 35 vis, 20/60 LCM. Increase LCM to 50 due to losing 200 bbl @ 1790'. DTD of 2020' & TOH for DST #1- Upper KC.
KANSAS CITY	--	2001' (-778)	
STARK	--	2118' (-895)	
BASE KANSAS CITY	--	2205' (-982)	
CHECKERBOARD	--	2237' (-1014)	08/26/2019- DTD 2171' @ 7:00AM. Mud wt 9.2 ppg, 40 vis, 50/50 LCM
ALTAMONT	--	2288' (-1065)	08/27/2019- DTD 2470' @ 12:30AM. CFS. Short trip, TOH for DST #2- Simpson SS & Ar buckle. DTD 2478' CFS. TOH for DST #3- Ar buckle.
PAWNEE	--	2324' (1065)	
CHEROKEE	--	2372' (-1149)	08/28/2019- THH w/ bit @ 7:00AM. DTD 2496'. Run DST #4- Ar buckle.
ARDMORE	--	2435' (-1212)	
BASAL SIMPSON SD	--	2464' (-1241)	08/29/2019- Prepare to plug well.
ARBUCKLE	--	2467' (-1244)	
RTD/LTD	--	2496' (-1273)	

REMARKS:

The decision was made to P&A the VOC Brown Scully 'A' #2 test well.

Respectfully submitted,
Roger L. Martin, Geologist (wellsite)





**TRILOBITE
TESTING, INC.**

DRILL STEM TEST REPORT

Vess Oil Corporation
1700 N. Waterfront Parkway
Building 500
Wichita, KS 67206-6619
ATTN: Dylan Klaus/Roger Ma

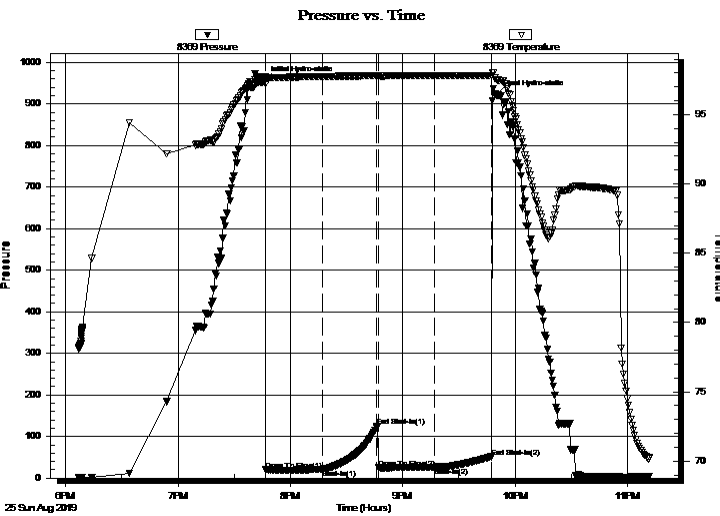
16-28S-4E Butler, KS
Braun Scully A #2
Job Ticket: 63949 **DST#: 1**
Test Start: 2019.08.25 @ 18:07:00

GENERAL INFORMATION:

Formation: **Upper Kansas City**
Deviated: No Whipstock: ft (KB)
Time Tool Opened: 19:46:50
Time Test Ended: 23:12:09
Interval: **2004.00 ft (KB) To 2020.00 ft (KB) (TVD)**
Total Depth: 2020.00 ft (KB) (TVD)
Hole Diameter: 7.88 inches Hole Condition: Fair
Test Type: Conventional Bottom Hole (Initial)
Tester: Jimmy Ricketts
Unit No: 80
Reference Elevations: 1227.00 ft (KB)
1218.00 ft (CF)
KB to GR/CF: 9.00 ft

Serial #: 8369 Outside
Press@RunDepth: 26.72 psig @ 2005.00 ft (KB) Capacity: 8000.00 psig
Start Date: 2019.08.25 End Date: 2019.08.25 Last Calib.: 2019.08.25
Start Time: 18:07:01 End Time: 23:12:10 Time On Btm: 2019.08.25 @ 19:46:20
Time Off Btm: 2019.08.25 @ 21:50:10

TEST COMMENT: IF - Very weak surface blow dying to no blow.
FF - Very weak surface blow dying to no blow.



PRESSURE SUMMARY

Time (Min.)	Pressure (psig)	Temp (deg F)	Annotation
0	954.82	97.75	Initial Hydro-static
1	19.84	97.21	Open To Flow (1)
31	20.80	97.75	Shut-In(1)
60	124.87	97.81	End Shut-In(1)
61	24.72	97.78	Open To Flow (2)
91	26.72	97.80	Shut-In(2)
121	51.27	97.80	End Shut-In(2)
124	921.51	97.51	Final Hydro-static

Recovery

Length (ft)	Description	Volume (bbl)
5.00	Drilling mud 100% M	0.02
0.00	TS - OSM 1%O & 99%M	0.00

Gas Rates

	Choke (inches)	Pressure (psig)	Gas Rate (Mcf/d)



TRILOBITE TESTING, INC.

DRILL STEM TEST REPORT

Vess Oil Corporation
 1700 N. Waterfront Parkway
 Building 500
 Wichita, KS 67206-6619
 ATTN: Dylan Klaus/Roger Ma

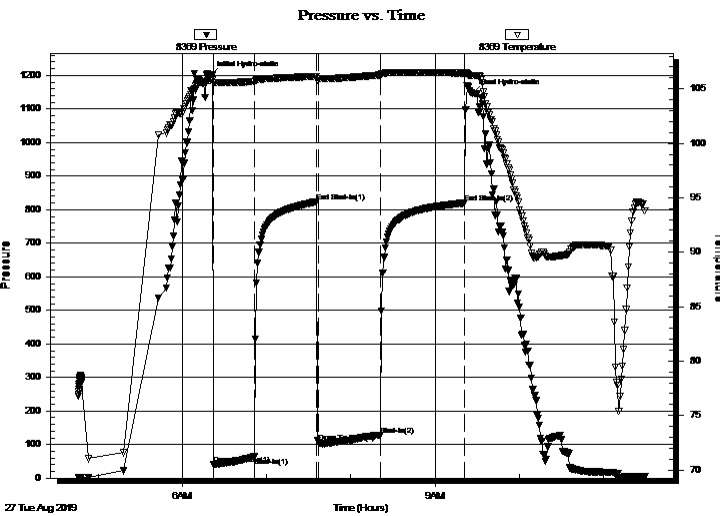
16-28S-4E Butler, KS
Braun Scully A #2
 Job Ticket: 63950 **DST#: 2**
 Test Start: 2019.08.27 @ 04:46:00

GENERAL INFORMATION:

Formation: **Simpson**
 Deviated: No Whipstock: ft (KB)
 Time Tool Opened: 06:22:10
 Time Test Ended: 11:29:39
 Interval: **2441.00 ft (KB) To 2470.00 ft (KB) (TVD)**
 Total Depth: 2470.00 ft (KB) (TVD)
 Hole Diameter: 7.88 inches Hole Condition: Fair
 Test Type: Conventional Bottom Hole (Initial)
 Tester: Jimmy Ricketts
 Unit No: 80
 Reference Elevations: 1227.00 ft (KB)
 1218.00 ft (CF)
 KB to GR/CF: 9.00 ft

Serial #: 8369 Outside
 Press@RunDepth: 128.92 psig @ 2442.00 ft (KB) Capacity: 8000.00 psig
 Start Date: 2019.08.27 End Date: 2019.08.27 Last Calib.: 2019.09.03
 Start Time: 04:46:01 End Time: 11:29:40 Time On Btm: 2019.08.27 @ 06:20:10
 Time Off Btm: 2019.08.27 @ 09:27:00

TEST COMMENT: IF - Weak blow building to 7"
 FF - Weak blow building to 6"



PRESSURE SUMMARY

Time (Min.)	Pressure (psig)	Temp (deg F)	Annotation
0	1198.68	105.79	Initial Hydro-static
2	41.51	105.57	Open To Flow (1)
32	63.51	105.67	Shut-In(1)
76	823.71	106.12	End Shut-In(1)
77	106.68	105.96	Open To Flow (2)
122	128.92	106.27	Shut-In(2)
182	820.11	106.44	End Shut-In(2)
187	1146.88	106.21	Final Hydro-static

Recovery

Length (ft)	Description	Volume (bbl)
110.00	OSHMCW 1%O 52%W & 47%M	0.54
150.00	OSM 2%O & 98%M	0.87
5.00	Clean Oil 100%O	0.07
0.00	TS O&WCM 13%O 10%W & 77%M	0.00

Gas Rates

	Choke (inches)	Pressure (psig)	Gas Rate (Mcf/d)



TRILOBITE TESTING, INC.

DRILL STEM TEST REPORT

Vess Oil Corporation
 1700 N. Waterfront Parkway
 Building 500
 Wichita, KS 67206-6619
 ATTN: Dylan Klaus/Roger Ma

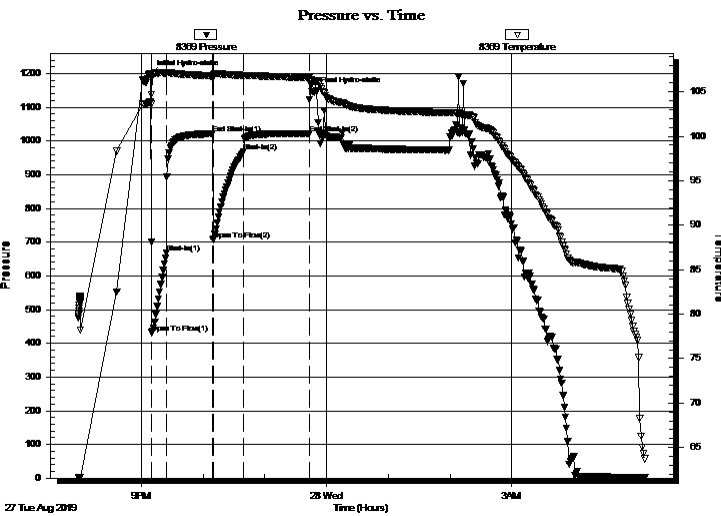
16-28S-4E Butler, KS
Braun Scully A #2
 Job Ticket: 34341 **DST#: 3**
 Test Start: 2019.08.27 @ 19:59:00

GENERAL INFORMATION:

Formation: **Arbuckle**
 Deviated: No Whipstock: ft (KB)
 Time Tool Opened: 21:09:50
 Time Test Ended: 05:10:00
 Interval: **2470.00 ft (KB) To 2478.00 ft (KB) (TVD)**
 Total Depth: 2478.00 ft (KB) (TVD)
 Hole Diameter: 7.88 inches Hole Condition: Fair
 Test Type: Conventional Bottom Hole (Initial)
 Tester: Jimmy Ricketts
 Unit No: 80
 Reference Elevations: 1227.00 ft (KB)
 1218.00 ft (CF)
 KB to GR/CF: 9.00 ft

Serial #: 8369 Outside
 Press@RunDepth: 968.53 psig @ 2471.00 ft (KB) Capacity: 8000.00 psig
 Start Date: 2019.08.27 End Date: 2019.08.28 Last Calib.: 2019.08.28
 Start Time: 19:59:01 End Time: 05:10:00 Time On Btm: 2019.08.27 @ 21:08:50
 Time Off Btm: 2019.08.27 @ 23:47:10

TEST COMMENT: IF - Strong blow throughout initial flow period.
 FF - Strong blow throughout final flow period.



PRESSURE SUMMARY

Time (Min.)	Pressure (psig)	Temp (deg F)	Annotation
0	1195.87	103.84	Initial Hydro-static
1	431.69	104.67	Open To Flow (1)
16	667.16	107.08	Shut-In(1)
61	1020.97	106.76	End Shut-In(1)
61	706.79	106.67	Open To Flow (2)
91	968.53	106.84	Shut-In(2)
155	1022.63	106.61	End Shut-In(2)
159	1145.74	106.26	Final Hydro-static

Recovery

Length (ft)	Description	Volume (bbl)
1540.00	OS&VSMCW 1%O 95%W & 4%M	19.37
690.00	Clean Oil 100%O	9.68
0.00	TS SO&MCW 6%O 89%W 5%M	0.00

Gas Rates

	Choke (inches)	Pressure (psig)	Gas Rate (Mcf/d)



**TRILOBITE
TESTING, INC.**

DRILL STEM TEST REPORT

Vess Oil Corporation
1700 N. Waterfront Parkway
Building 500
Wichita, KS 67206-6619
ATTN: Dylan Klaus/Roger Ma

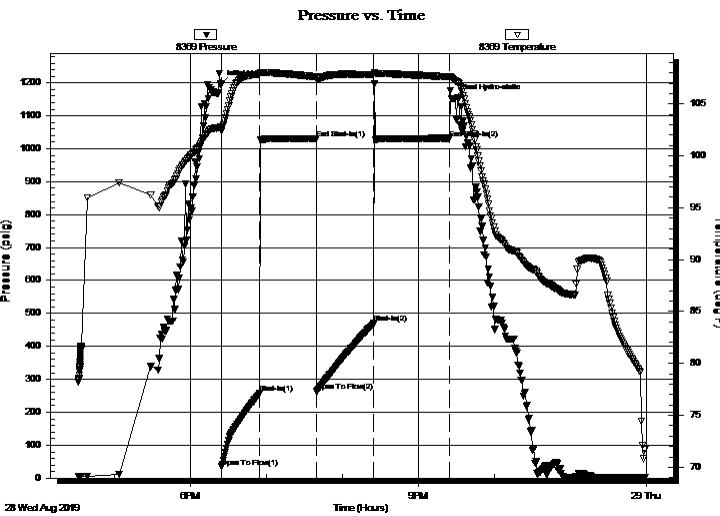
16-28S-4E Butler, KS
Braun Scully A #2
Job Ticket: 34342 **DST#: 4**
Test Start: 2019.08.28 @ 16:32:00

GENERAL INFORMATION:

Formation: **Arbuckle**
Deviated: No Whipstock: ft (KB)
Time Tool Opened: 18:25:00
Time Test Ended: 23:59:00
Interval: **2488.00 ft (KB) To 2496.00 ft (KB) (TVD)**
Total Depth: 2496.00 ft (KB) (TVD)
Hole Diameter: 7.88 inches Hole Condition: Fair
Test Type: Conventional Bottom Hole (Initial)
Tester: Jimmy Ricketts
Unit No: 80
Reference Elevations: 1227.00 ft (KB)
1218.00 ft (CF)
KB to GR/CF: 9.00 ft

Serial #: 8369 Outside
Press@RunDepth: 469.48 psig @ 2489.00 ft (KB) Capacity: 8000.00 psig
Start Date: 2019.08.28 End Date: 2019.08.28 Last Calib.: 1899.12.30
Start Time: 16:32:01 End Time: 23:59:00 Time On Btm: 2019.08.28 @ 18:24:10
Time Off Btm: 2019.08.28 @ 21:27:50

TEST COMMENT: IF - Weak blow building to strong blow 5 minutes. Built to 75"
FF - Weak blow building to strong blow 6 minutes. Built to 115"



PRESSURE SUMMARY

Time (Min.)	Pressure (psig)	Temp (deg F)	Annotation
0	1193.80	102.75	Initial Hydro-static
1	34.03	102.36	Open To Flow (1)
31	257.48	107.86	Shut-In(1)
76	1031.11	107.60	End Shut-In(1)
76	264.16	107.37	Open To Flow (2)
121	469.48	107.79	Shut-In(2)
181	1031.66	107.61	End Shut-In(2)
184	1151.65	107.32	Final Hydro-static

Recovery

Length (ft)	Description	Volume (bbl)
1009.00	O&MSW 1%O 2%M & 97%W	11.92
1.00	Clean Oil 100% O	0.01
0.00	TS Trace OVS/CW Tr O 3%M & 97%W	0.00

Gas Rates

	Choke (inches)	Pressure (psig)	Gas Rate (Mcf/d)