

# Fall & Associates

Stake and Elevation Service

P.O. Box 222

Pretty Prairie, KS. 67570

785-243-7506

Date 9-26-19

Invoice Number 0922191

MURFIN DRILLING

3-22

Gamblin

Operator

Number

Farm Name

Cheyenne-KS

22

2s

37w

1500'FNL 1050'FWL

County-State

S

T

R

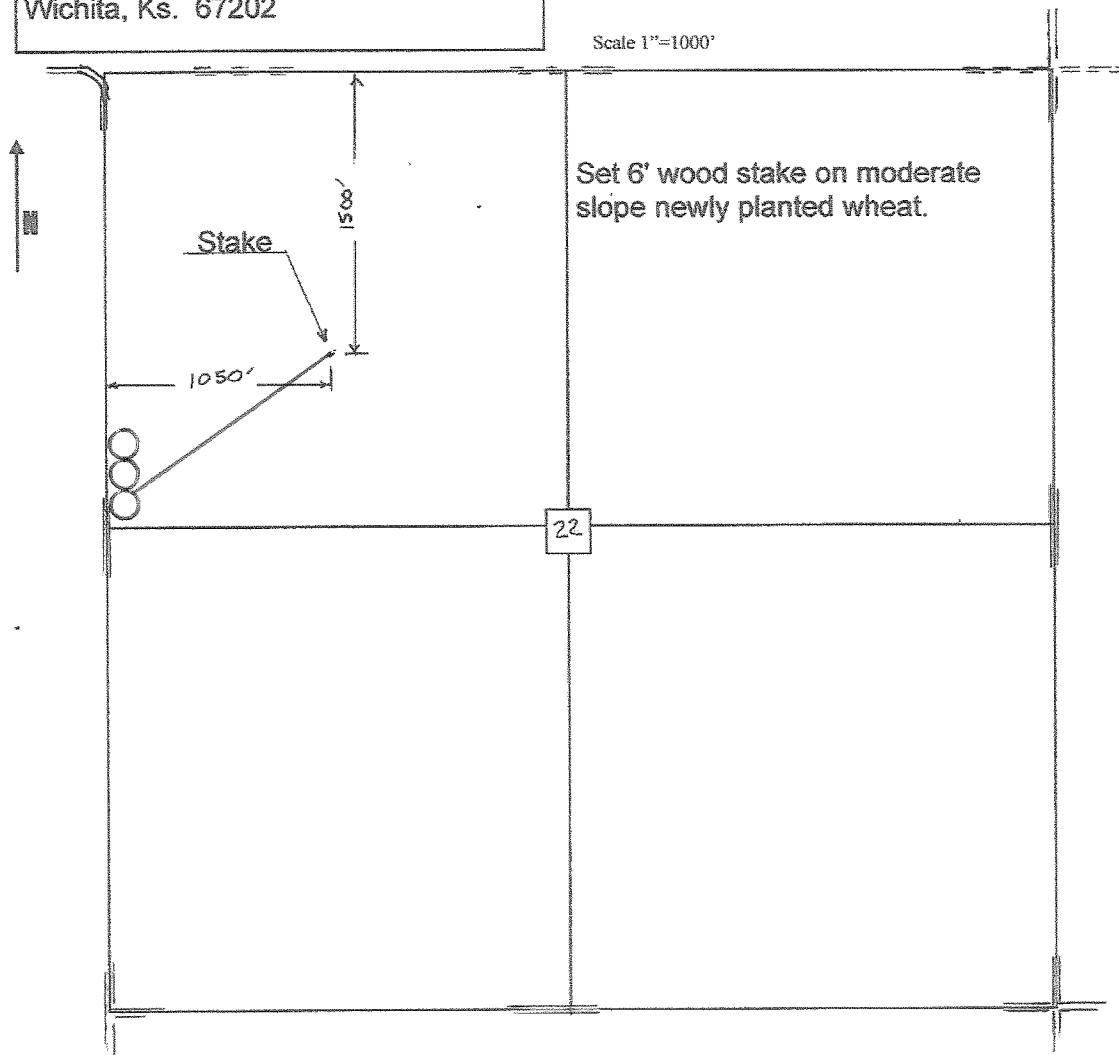
Location

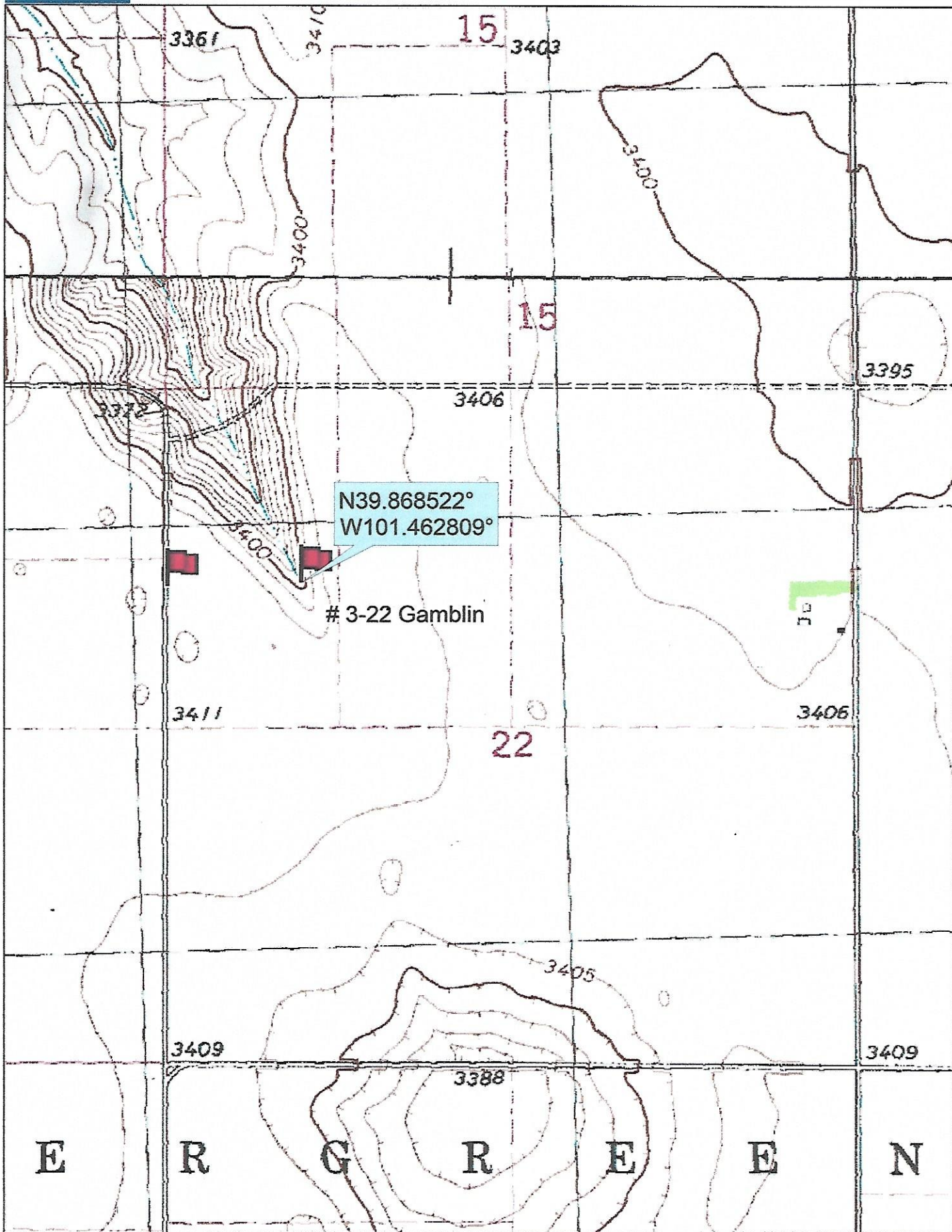
Murfin Drilling  
250 N Water  
Suite 300  
Wichita, Ks. 67202

Elevation 3399 Gr.

Ordered By: Shauna

Scale 1"=1000'





N39.868522°  
W101.462809°

# 3-22 Gamblin

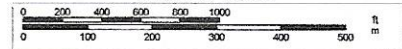
Data use subject to license.

© DeLorme. Topo North America™ 9.

www.delorme.com



Scale 1 : 12,000



1" = 1,000.0 ft Data Zoom 13-1