

KANSAS CORPORATION COMMISSION
OIL & GAS CONSERVATION DIVISION

TEMPORARY ABANDONMENT WELL APPLICATION

OPERATOR: License#
Name:
Address 1:
Address 2:
City: State: Zip:
Contact Person:
Phone:
Contact Person Email:
Field Contact Person:
Field Contact Person Phone:

API No. 15-
Spot Description:
Sec. Twp. S. R.
GPS Location: Lat: Long:
Datum:
County: Elevation:
Lease Name: Well #:
Well Type:
SWD Permit #: ENHR Permit #:
Gas Storage Permit #:
Spud Date: Date Shut-In:

Table with 7 columns: Conductor, Surface, Production, Intermediate, Liner, Tubing. Rows include Size, Setting Depth, Amount of Cement, Top of Cement, Bottom of Cement.

Casing Fluid Level from Surface: How Determined? Date:
Casing Squeeze(s): to w / sacks of cement, to w / sacks of cement. Date:
Do you have a valid Oil & Gas Lease? Yes No
Depth and Type: Junk in Hole at Tools in Hole at Casing Leaks: Yes No Depth of casing leak(s):
Type Completion: ALT. I ALT. II Depth of: DV Tool: w / sacks of cement Port Collar: w / sack of cement
Packer Type: Size: Inch Set at: Feet
Total Depth: Plug Back Depth: Plug Back Method:

Geological Data:

Table with 4 columns: Formation Name, Formation Top, Formation Base, Completion Information. Rows 1 and 2.

UNDER PENALTY OF PERJURY I HEREBY ATTEST THAT THE INFORMATION CONTAINED HEREIN IS TRUE AND CORRECT TO THE BEST OF MY KNOWLEDGE

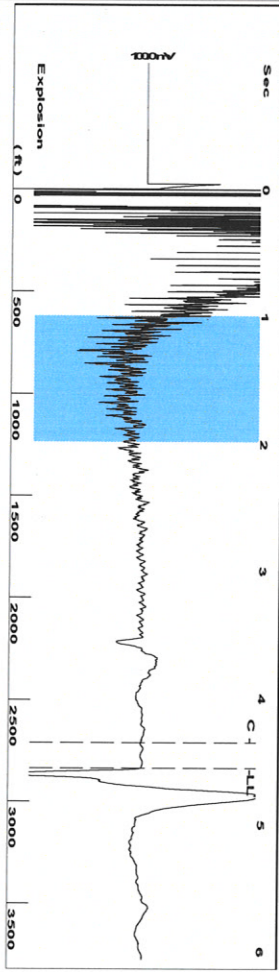
Submitted Electronically

Do NOT Write in This Space - KCC USE ONLY
Date Tested: Results: Date Plugged: Date Repaired: Date Put Back in Service:
Review Completed by: Comments:
TA Approved: Yes Denied Date:

Mail to the Appropriate KCC Conservation Office:

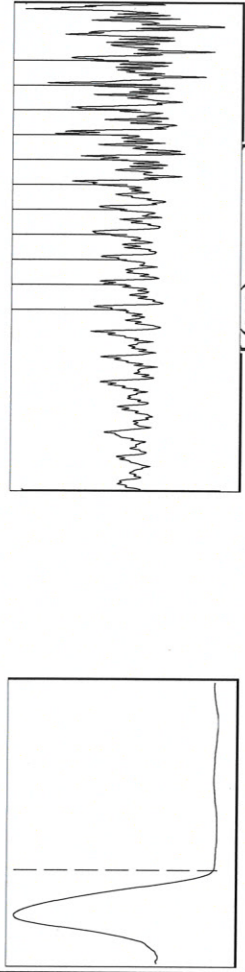
Table with 2 columns: Office Address, Phone. Rows for District Office #1, #2, #3, #4.

Group: TAID Well: English E-3 (acquired on: 09/27/19 11:29:06)



Filter Type High Pass  
 Manual Acoustic Veloc 1238.28 ft/s  
 Automatic Collar Count Yes  
 Manual JTS/sec 19.5312  
 Time 4.559 sec  
 Joints 89.4799 Jts  
 Depth 2836.51 ft

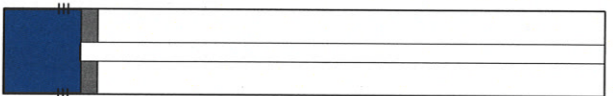
[ 1.0 to 2.0 (Sec) ]



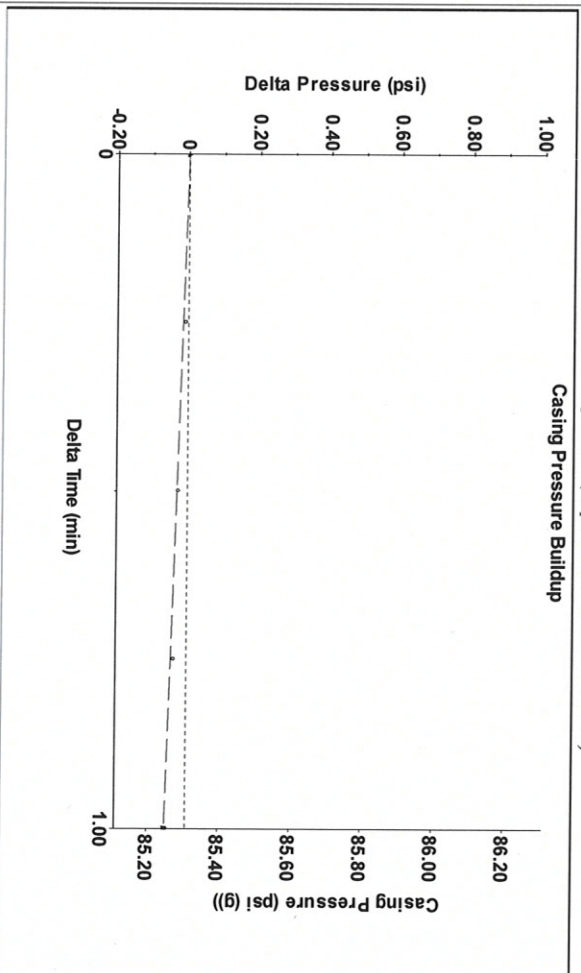
Analysis Method: Automatic

Group: TAID Well: English E-3 (acquired on: 09/27/19 11:29:06)

Production	Potential	Casing Pressure	Producing
Current	BBL/D	85.3 psi (g)	Liquid Stream
Oil	BBL/D		Below Tubing
Water	BBL/D	-0.058 psi	Oil
Gas	Mscf/D	1.00 mtn	Water
IPR Method	Vogel	Gas/Liquid Interface Pressure	% Liquid
PBHP/SBHP		92.7 psi (g)	100 %
Production Efficiency			
Oil 40 deg API		Liquid Level Depth	
Water 1.05 Sp.Gr. H2O		2836.51 ft	
Gas 0.75 Sp.Gr. AIR		Pump Intake Depth	
Acoustic Velocity		2945.00 ft	
		Formation Depth	
		3054.00 ft	
Formation Submergence			
Total Gaseous Liquid Column HT (TVVD)			
Equivalent Gas Free Liquid HT (TVVD)			
Acoustic Test			

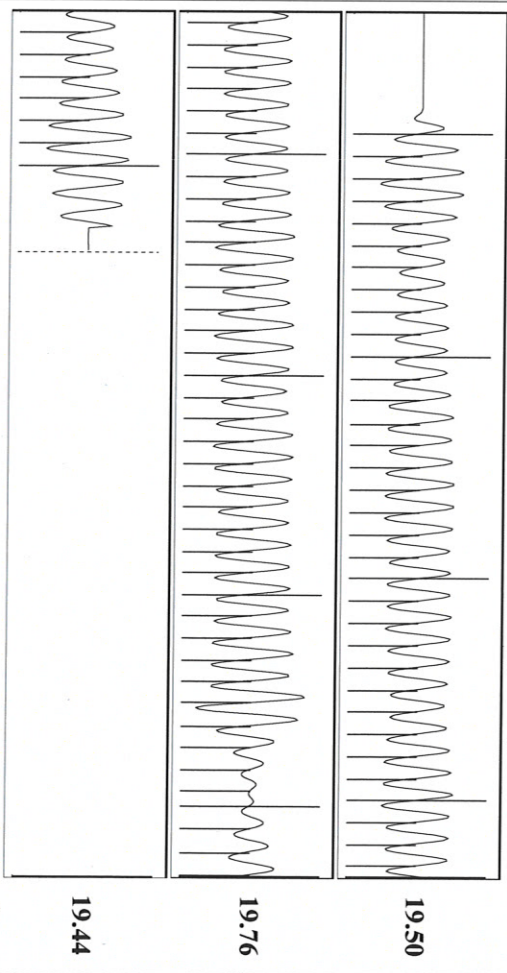


Group: TAID Well: English E-3 (acquired on: 09/27/19 11:29:06)



Change in Pressure -0.06 psi  
 Change in Time 1.00 min  
 PT8197  
 Range  
 0 - ? psi

Group: TAID Well: English E-3 (acquired on: 09/27/19 11:29:06)



Acoustic Velocity 1244.36 ft/s  
 Joints Per Second 19.6271 jts/sec  
 Depth to liquid level 2836.51 ft  
 Automatic Collar Count Yes

Joints counted 80  
 Joints to liquid level 89.4799  
 Filter Width 17.5312  
 Time to 1st Collar 4.356

October 01, 2019

Katherine McClurkan  
Merit Energy Company, LLC  
13727 Noel Road, Suite 1200  
Dallas, TX 75240

Re: Temporary Abandonment  
API 15-067-20525-00-00  
English E 3  
SE/4 Sec.02-29S-36W  
Grant County, Kansas

Dear Katherine McClurkan:

"Your temporary abandonment (TA) application for the well listed above has been approved. In accordance with K.A.R. 82-3-111 the TA status of this well will expire 10/01/2020.

- \* If you return this well to service or plug it, please notify the District Office.
- \* If you sell this well you are required to file a Transfer of Operator form, T-1.
- \* If the well will remain temporarily abandoned, you must submit a new TA application, CP-111, before 10/01/2020.

You may contact me at the number above if you have questions.

Very truly yours,

Michael Maier"