

KANSAS CORPORATION COMMISSION
OIL & GAS CONSERVATION DIVISION

TEMPORARY ABANDONMENT WELL APPLICATION

OPERATOR: License#
Name:
Address 1:
Address 2:
City: State: Zip:
Contact Person:
Phone:
Contact Person Email:
Field Contact Person:
Field Contact Person Phone:

API No. 15-
Spot Description:
Sec. Twp. S. R.
GPS Location: Lat: Long:
Datum: NAD27 NAD83 WGS84
County: Elevation:
Lease Name: Well #:
Well Type: Oil Gas OG WSW Other:
SWD Permit #: ENHR Permit #:
Gas Storage Permit #:
Spud Date: Date Shut-In:

Table with 7 columns: Conductor, Surface, Production, Intermediate, Liner, Tubing. Rows include Size, Setting Depth, Amount of Cement, Top of Cement, Bottom of Cement.

Casing Fluid Level from Surface: How Determined? Date:
Casing Squeeze(s): to w / sacks of cement, to w / sacks of cement. Date:
Do you have a valid Oil & Gas Lease? Yes No
Depth and Type: Junk in Hole at Tools in Hole at Casing Leaks: Yes No Depth of casing leak(s):
Type Completion: ALT. I ALT. II Depth of: DV Tool: w / sacks of cement Port Collar: w / sack of cement
Packer Type: Size: Inch Set at: Feet
Total Depth: Plug Back Depth: Plug Back Method:

Geological Data:

Table with 4 columns: Formation Name, Formation Top, Formation Base, Completion Information. Rows 1 and 2.

UNDER PENALTY OF PERJURY I HEREBY ATTEST THAT THE INFORMATION CONTAINED HEREIN IS TRUE AND CORRECT TO THE BEST OF MY KNOWLEDGE

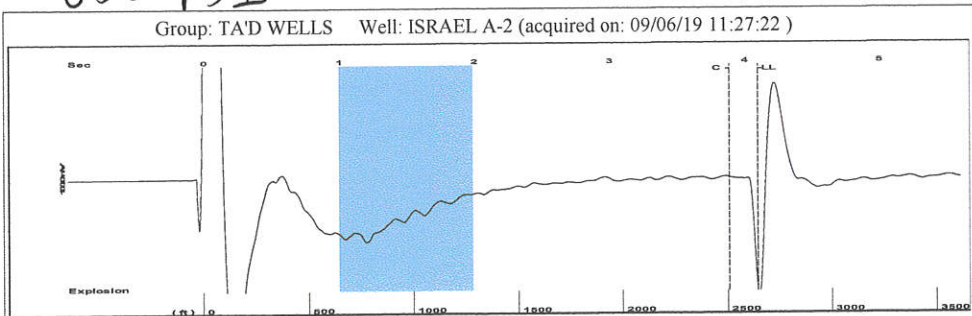
Submitted Electronically

Do NOT Write in This Space - KCC USE ONLY
Date Tested: Results: Date Plugged: Date Repaired: Date Put Back in Service:
Review Completed by: Comments:
TA Approved: Yes Denied Date:

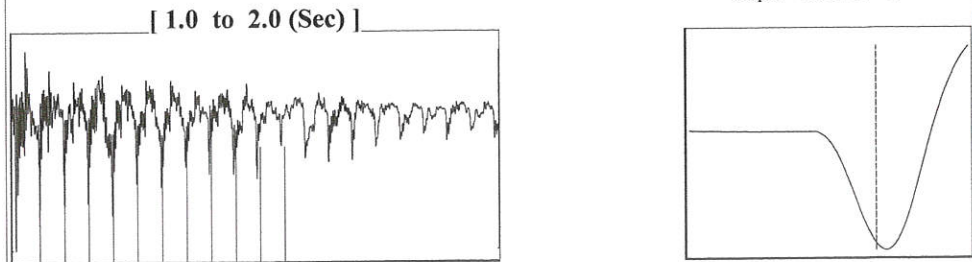
Mail to the Appropriate KCC Conservation Office:

Table with 3 columns: District Office, Address, Phone. Rows 1-4.

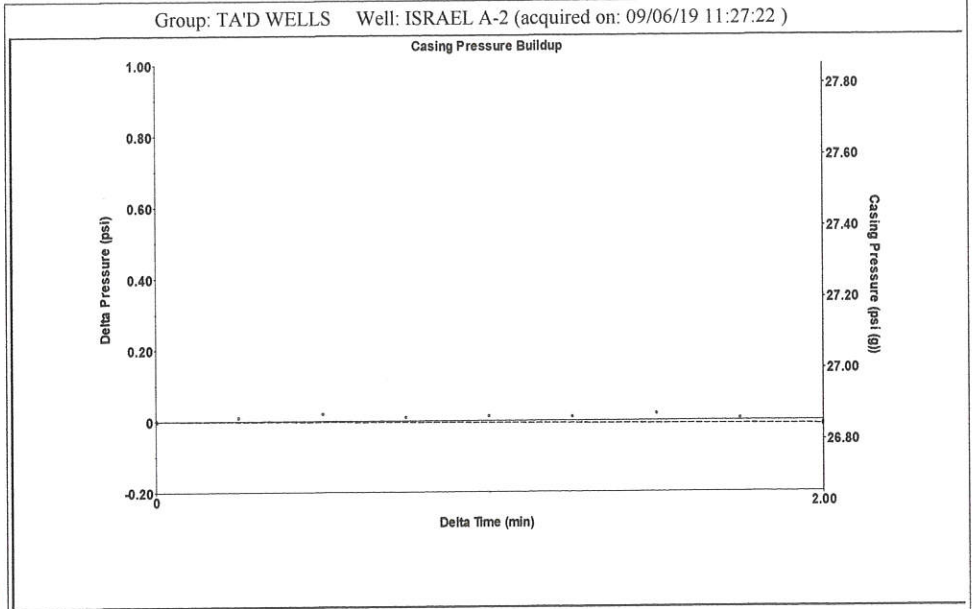
650 PSI



Filter Type High Pass Automatic Collar Count Yes Time 4.097 sec
 Manual Acoustic Velo 1262.95 ft/s Manual JTS/sec 19.9203 Joints 83.3823 Jts
 Depth 2643.22 ft



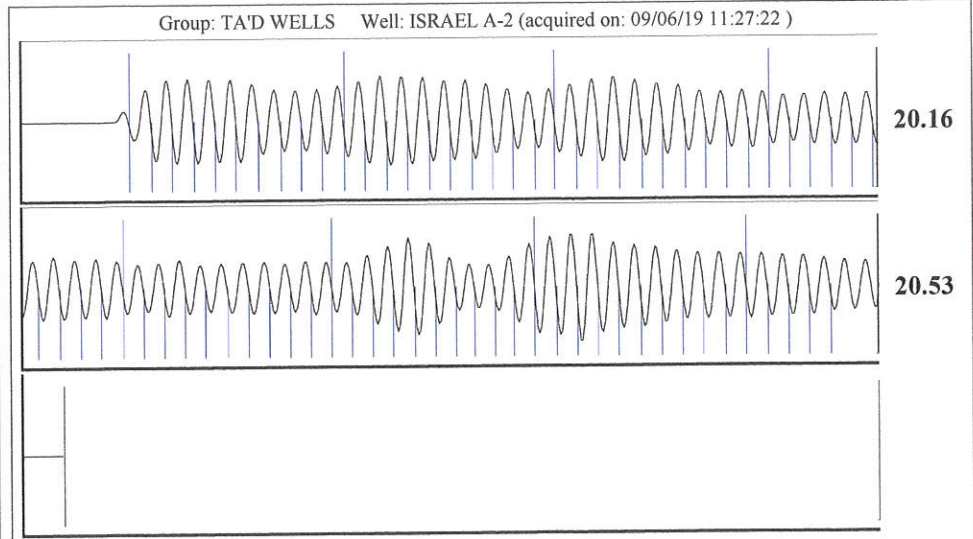
Analysis Method: Automatic



Change in Pressure -0.01 psi PT10857
 Range 0 - ? psi
 Change in Time 2.00 min

Group: TA'D WELLS Well: ISRAEL A-2 (acquired on: 09/06/19 11:27:22)

Production	Potential	Casing Pressure		Producing
Oil - *-	- *- BBL/D	26.9 psi (g)		Annular
Water - *-	- *- BBL/D	Casing Pressure Buildup		Gas Flow
Gas - *-	- *- Mscf/D	-0.011 psi		0 Mscf/D
IPR Method	Vogel	2.00 min		% Liquid
PBHP/SBHP	- *-	Gas/Liquid Interface Pressure		100 %
Production Efficiency	0.0	29.6 psi (g)		
Oil 40 deg.API		Liquid Level Depth		
Water 1.05 Sp.Gr.H2O		2643.22 ft		
Gas 0.71 Sp.Gr.AIR		Pump Intake Depth		
Acoustic Velocity	1290.32 ft/s	2844.00 ft		
		Formation Depth		
		2855.00 ft		
Formation Submergence			Pump Intake	
Total Gaseous Liquid Column HT (TVD)	201 ft		97.4 psi (g)	
Equivalent Gas Free Liquid HT (TVD)	201 ft		Producing BHP	
			102.4 psi (g)	
Acoustic Test			Static BHP	
			- *- psi (g)	



Acoustic Velocity 1290.32 ft/s Joints counted 74
 Joints Per Second 20.352 jts/sec Joints to liquid level 83.3823
 Depth to liquid level 2643.22 ft Filter Width 17.9203 21.9203
 Automatic Collar Count Yes Time to 1st Collar 0.252 3.888

October 01, 2019

Katherine McClurkan
Merit Energy Company, LLC
13727 Noel Road, Suite 1200
Dallas, TX 75240

Re: Temporary Abandonment
API 15-129-20079-00-00
Israel A 2
SE/4 Sec.04-32S-39W
Morton County, Kansas

Dear Katherine McClurkan:

Your application for Temporary Abandonment (TA) for the above-listed well is denied for the following reasons(s):

Shut-in Over 10 years

Pursuant to K.A.R. 82-3-111, the well must be plugged or returned to service by October 29, 2019.

If you wish to instead file an application for an exception to the 10-year limitation of K.A.R. 82-3-111, demonstrating why it is necessary to TA the well for more than 10 years, then you must file the application for an exception by October 29, 2019.

This deadline does NOT override any compliance deadline given to you in any Commission Order.

You may contact me if you have any questions.

Sincerely,
Michael Maier
KCC DISTRICT 1