

KANSAS CORPORATION COMMISSION
OIL & GAS CONSERVATION DIVISION

TEMPORARY ABANDONMENT WELL APPLICATION

All blanks must be complete

OPERATOR: License# _____
 Name: _____
 Address 1: _____
 Address 2: _____
 City: _____ State: _____ Zip: _____ + _____
 Contact Person: _____
 Phone:(_____) _____
 Contact Person Email: _____
 Field Contact Person: _____
 Field Contact Person Phone: (_____) _____

API No. 15- _____
 Spot Description: _____
 _____ - _____ - _____ - _____ Sec. _____ Twp. _____ S. R. _____ E W
 _____ feet from N / S Line of Section
 _____ feet from E / W Line of Section
 GPS Location: Lat: _____, Long: _____
(e.g. xx.xxxxx) (e.g. -xxx.xxxxx)
 Datum: NAD27 NAD83 WGS84
 County: _____ Elevation: _____ GL KB
 Lease Name: _____ Well #: _____
 Well Type: (check one) Oil Gas OG WSW Other: _____
 SWD Permit #: _____ ENHR Permit #: _____
 Gas Storage Permit #: _____
 Spud Date: _____ Date Shut-In: _____

	Conductor	Surface	Production	Intermediate	Liner	Tubing
Size						
Setting Depth						
Amount of Cement						
Top of Cement						
Bottom of Cement						

Casing Fluid Level from Surface: _____ How Determined? _____ Date: _____
 Casing Squeeze(s): _____ to _____ w / _____ sacks of cement, _____ to _____ w / _____ sacks of cement. Date: _____
(top) (bottom) (top) (bottom)
 Do you have a valid Oil & Gas Lease? Yes No
 Depth and Type: Junk in Hole at _____ Tools in Hole at _____ Casing Leaks: Yes No Depth of casing leak(s): _____
(depth) (depth)
 Type Completion: ALT. I ALT. II Depth of: DV Tool: _____ w / _____ sacks of cement Port Collar: _____ w / _____ sack of cement
(depth) (depth)
 Packer Type: _____ Size: _____ Inch Set at: _____ Feet
 Total Depth: _____ Plug Back Depth: _____ Plug Back Method: _____

Geological Data:

Formation Name	Formation Top	Formation Base	Completion Information
1. _____	At: _____	to _____ Feet	Perforation Interval _____ to _____ Feet or Open Hole Interval _____ to _____ Feet
2. _____	At: _____	to _____ Feet	Perforation Interval _____ to _____ Feet or Open Hole Interval _____ to _____ Feet

UNDER PENALTY OF PERJURY I HEREBY ATTEST THAT THE INFORMATION CONTAINED HEREIN IS TRUE AND CORRECT TO THE BEST OF MY KNOWLEDGE

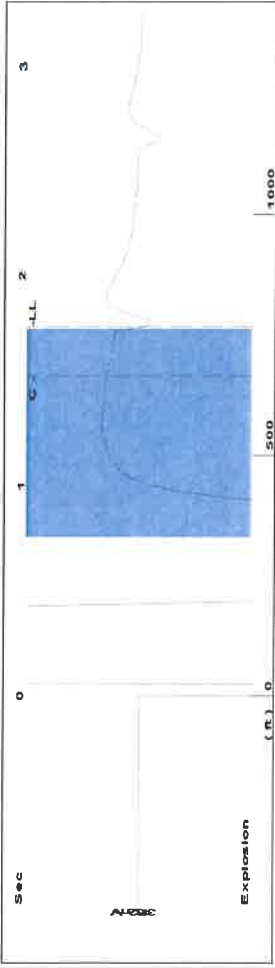
Submitted Electronically

Do NOT Write in This Space - KCC USE ONLY	Date Tested: _____	Results: _____	Date Plugged: _____	Date Repaired: _____	Date Put Back in Service: _____
	Review Completed by: _____ Comments: _____				
TA Approved: <input type="checkbox"/> Yes <input type="checkbox"/> Denied Date: _____					

Mail to the Appropriate KCC Conservation Office:

	KCC District Office #1 - 210 E. Frontview, Suite A, Dodge City, KS 67801	Phone 620.682.7933
	KCC District Office #2 - 3450 N. Rock Road, Building 600, Suite 601, Wichita, KS 67226	Phone 316.337.7400
	KCC District Office #3 - 137 E. 21st St., Chanute, KS 66720	Phone 620.902.6450
	KCC District Office #4 - 2301 E. 13th Street, Hays, KS 67601-2651	Phone 785.261.6250

Group: EDISON OPERATING Well: DAVIS TWIN 1-27 (acquired on: 09/26/19 09:12:12)

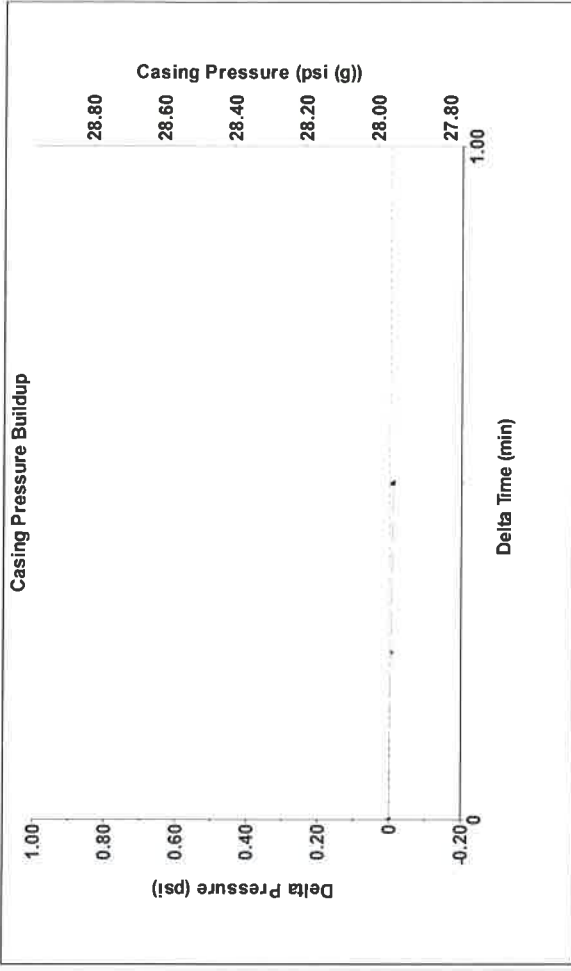


Filter Type High Pass Automatic Collar Count Yes
 Manual Acoustic Velo894.217 ft/s Manual JTS/sec 14.1044
 Time 1.759 sec
 Joints 24.1934 Jts
 Depth 766.93 ft

0.8 to 1.8 (Sec)



Group: EDISON OPERATING Well: DAVIS TWIN 1-27 (acquired on: 09/26/19 09:12:12)



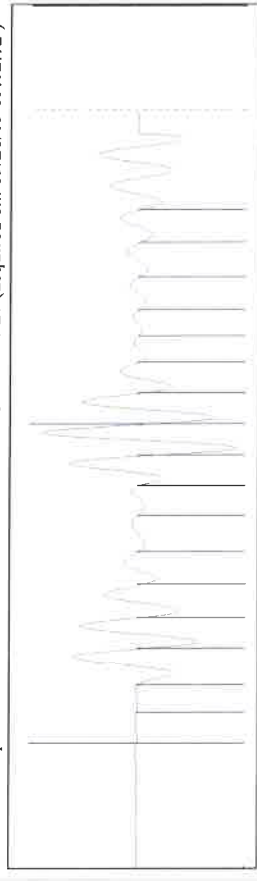
Change in Pressure -0.01 psi PT14020
 Change in Time 0.50 min Range

Analysis Method: Automatic

Group: EDISON OPERATING Well: DAVIS TWIN 1-27 (acquired on: 09/26/19 09:12:12)

Production	Potential	Casing Pressure	Static
Oil -*- BBL/D	28.0 psi (g)	Oil Column Height	Oil Column Height
Water -*- BBL/D	-0.0 psi	MD 0 ft	MD 0 ft
Gas -*- Mscf/D	0.50 min	Water Column Height	Water Column Height
IPR Method Vogel	Gas/Liquid Interface Pressure	MD 2327 ft	MD 2327 ft
PBHP/SBHP -*-	29.2 psi (g)	Static BHP	Static BHP
Production Efficiency 0.0	Liquid Level Depth	1087.2 psi (g)	1087.2 psi (g)
Oil 40 deg API	766.93 ft		
Water 1.05 Sp.Gr.H2O	Pump Intake Depth		
Gas 1.08 Sp.Gr.AIR	3132.00 ft		
Acoustic Velocity 872.006 ft/s	Formation Depth		
	3094.00 ft		

Group: EDISON OPERATING Well: DAVIS TWIN 1-27 (acquired on: 09/26/19 09:12:12)



Acoustic Velocity 872.006 ft/s Joints counted 17
 Joints Per Second 13.754 Jts/sec Joints to liquid level 24.1934
 Depth to liquid level 766.93 ft Filter Width 12.1044
 Automatic Collar Count Yes Time to 1st Collar 0.288 1.524

October 04, 2019

BRIAN J MCCOY
Edison Operating Company LLC
8100 E. 22ND ST. N., BLDG 1900
WICHITA, KS 67226-2319

Re: Temporary Abandonment
API 15-159-22698-00-00
DAVIS 1-27 'TWIN'
NW/4 Sec.27-18S-10W
Rice County, Kansas

Dear BRIAN J MCCOY:

Your application for Temporary Abandonment (TA) for the above-listed well is denied for the following reasons(s):

High Fluid Level

Pursuant to K.A.R. 82-3-111, the well must be plugged, or returned to service, or obtain temporary abandonment status by November 01, 2019.

This deadline does NOT override any compliance deadline given to you in any Commission Order.

You may contact me if you have any questions.

Sincerely,
Virgil Clothier
KCC DISTRICT 2