

KANSAS CORPORATION COMMISSION  
OIL & GAS CONSERVATION DIVISION

TEMPORARY ABANDONMENT WELL APPLICATION

OPERATOR: License# \_\_\_\_\_  
 Name: \_\_\_\_\_  
 Address 1: \_\_\_\_\_  
 Address 2: \_\_\_\_\_  
 City: \_\_\_\_\_ State: \_\_\_\_\_ Zip: \_\_\_\_\_ + \_\_\_\_\_  
 Contact Person: \_\_\_\_\_  
 Phone: ( \_\_\_\_\_ ) \_\_\_\_\_  
 Contact Person Email: \_\_\_\_\_  
 Field Contact Person: \_\_\_\_\_  
 Field Contact Person Phone: ( \_\_\_\_\_ ) \_\_\_\_\_

API No. 15- \_\_\_\_\_  
 Spot Description: \_\_\_\_\_  
 \_\_\_\_\_ - \_\_\_\_\_ - \_\_\_\_\_ - \_\_\_\_\_ Sec. \_\_\_\_\_ Twp. \_\_\_\_\_ S. R. \_\_\_\_\_  E  W  
 \_\_\_\_\_ feet from  N /  S Line of Section  
 \_\_\_\_\_ feet from  E /  W Line of Section  
 GPS Location: Lat: \_\_\_\_\_, Long: \_\_\_\_\_  
(e.g. xx.xxxxx) (e.g. -xxx.xxxxx)  
 Datum:  NAD27  NAD83  WGS84  
 County: \_\_\_\_\_ Elevation: \_\_\_\_\_  GL  KB  
 Lease Name: \_\_\_\_\_ Well #: \_\_\_\_\_  
 Well Type: (check one)  Oil  Gas  OG  WSW  Other: \_\_\_\_\_  
 SWD Permit #: \_\_\_\_\_  ENHR Permit #: \_\_\_\_\_  
 Gas Storage Permit #: \_\_\_\_\_  
 Spud Date: \_\_\_\_\_ Date Shut-In: \_\_\_\_\_

	Conductor	Surface	Production	Intermediate	Liner	Tubing
Size						
Setting Depth						
Amount of Cement						
Top of Cement						
Bottom of Cement						

Casing Fluid Level from Surface: \_\_\_\_\_ How Determined? \_\_\_\_\_ Date: \_\_\_\_\_  
 Casing Squeeze(s): \_\_\_\_\_ to \_\_\_\_\_ w / \_\_\_\_\_ sacks of cement, \_\_\_\_\_ to \_\_\_\_\_ w / \_\_\_\_\_ sacks of cement. Date: \_\_\_\_\_  
(top) (bottom) (top) (bottom)  
 Do you have a valid Oil & Gas Lease?  Yes  No  
 Depth and Type:  Junk in Hole at \_\_\_\_\_  Tools in Hole at \_\_\_\_\_ Casing Leaks:  Yes  No Depth of casing leak(s): \_\_\_\_\_  
(depth) (depth)  
 Type Completion:  ALT. I  ALT. II Depth of:  DV Tool: \_\_\_\_\_ w / \_\_\_\_\_ sacks of cement  Port Collar: \_\_\_\_\_ w / \_\_\_\_\_ sack of cement  
(depth) (depth)  
 Packer Type: \_\_\_\_\_ Size: \_\_\_\_\_ Inch Set at: \_\_\_\_\_ Feet  
 Total Depth: \_\_\_\_\_ Plug Back Depth: \_\_\_\_\_ Plug Back Method: \_\_\_\_\_

**Geological Data:**

Formation Name	Formation Top	Formation Base	Completion Information
1. _____	At: _____	to _____ Feet	Perforation Interval _____ to _____ Feet or Open Hole Interval _____ to _____ Feet
2. _____	At: _____	to _____ Feet	Perforation Interval _____ to _____ Feet or Open Hole Interval _____ to _____ Feet

UNDER PENALTY OF PERJURY I HEREBY ATTEST THAT THE INFORMATION CONTAINED HEREIN IS TRUE AND CORRECT TO THE BEST OF MY KNOWLEDGE

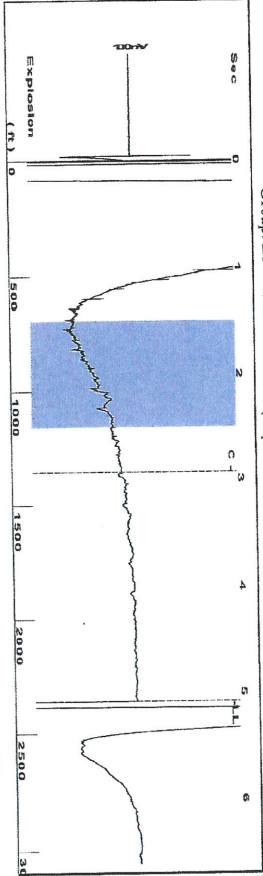
Submitted Electronically

<b>Do NOT Write in This Space - KCC USE ONLY</b>	Date Tested: _____	Results: _____	Date Plugged: _____	Date Repaired: _____	Date Put Back in Service: _____
	Review Completed by: _____ Comments: _____				
TA Approved: <input type="checkbox"/> Yes <input type="checkbox"/> Denied Date: _____					

Mail to the Appropriate KCC Conservation Office:

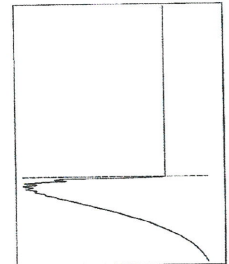
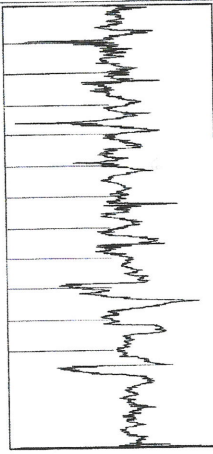
	KCC District Office #1 - 210 E. Frontview, Suite A, Dodge City, KS 67801	Phone 620.682.7933
	KCC District Office #2 - 3450 N. Rock Road, Building 600, Suite 601, Wichita, KS 67226	Phone 316.337.7400
	KCC District Office #3 - 137 E. 21st St., Chanute, KS 66720	Phone 620.902.6450
	KCC District Office #4 - 2301 E. 13th Street, Hays, KS 67601-2651	Phone 785.261.6250

Group: 1A Well: Carrie 2-2 (acquired on: 10/08/19 08:58:10)



Filter Type: High Pass  
Manual Acoustic Velocity: 613 ft/s  
Automatic Collar Count: 14.3472  
Time: 5.089 sec  
Joints: 74.3523 Jts  
Depth: 2356.97 ft

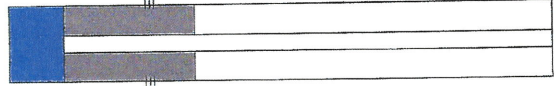
1.5 to 2.5 (Sec) |



**Analysis Method: Automatic**

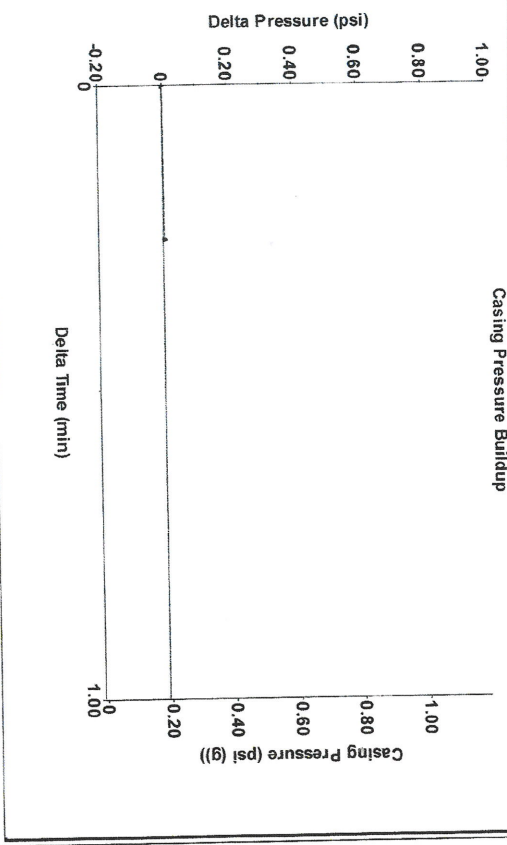
Group: 1A Well: Carrie 2-2 (acquired on: 10/08/19 08:58:10)

Production Current	Potential	Casing Pressure	Static
Oil -*- BBL/D	0.2 psi (g)	Oil Column Height	MD 0 ft
Water -*- BBL/D	0.0 psi	Water Column Height	MD 348 ft
Gas -*- Misc/D	0.25 min	Gas/Liquid Interface Pressure	1.5 psi (g)
IPR Method	Vogel	Liquid Level Depth	Static BHP
PBHP/SBHP	-*-	2356.97 ft	159.7 psi (g)
Production Efficiency	0.0	Pump Intake Depth	
Oil 40 deg API		3378.00 ft	
Water 1.05 Sp.Gr.H2O		2705.00 ft	
Gas 1.05 Sp.Gr.AIR			
Acoustic Velocity	926.299 ft/s		



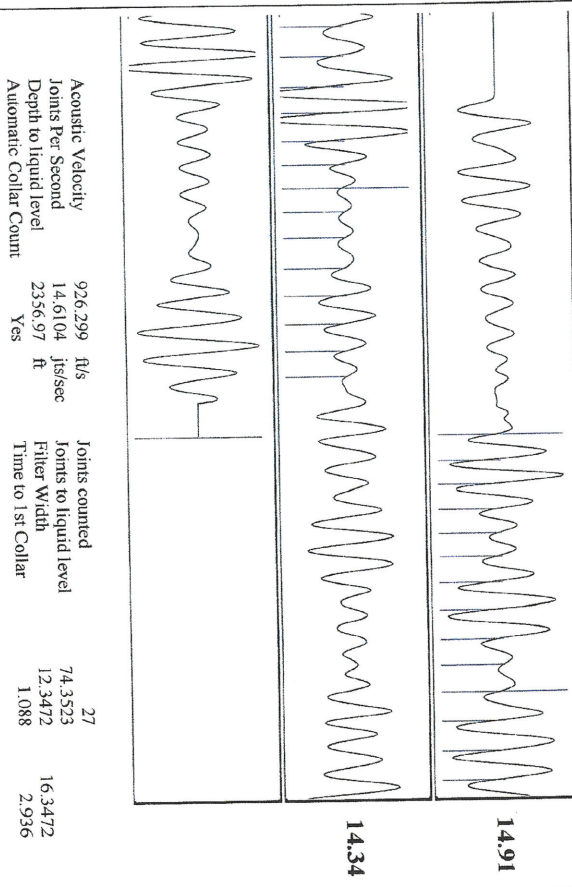
Group: 1A Well: Carrie 2-2 (acquired on: 10/08/19 08:58:10)

**Casing Pressure Buildup**



Change in Pressure: 0.00 psi  
Change in Time: 0.25 min  
PT6454  
Range  
0 - ? psi

Group: 1A Well: Carrie 2-2 (acquired on: 10/08/19 08:58:10)



Acoustic Velocity	926.299 ft/s	Joints counted	27
Joints Per Second	14.6104 Jts/sec	Joints to liquid level	74.3523
Depth to liquid level	2356.97 ft	Filter Width	12.3472
Automatic Collar Count	Yes	Time to 1st Collar	1.088
			16.3472
			2.936

October 08, 2019

Shannon Sheffield  
IA Operating, Inc.  
785 W. COVELL ROAD, SUITE 200  
EDMOND, OK 73003-2389

Re: Temporary Abandonment  
API 15-051-25251-00-00  
CARRIE UNIT 2-2  
NW/4 Sec.02-12S-16W  
Ellis County, Kansas

Dear Shannon Sheffield:

"Your temporary abandonment (TA) application for the well listed above has been approved. In accordance with K.A.R. 82-3-111 the TA status of this well will expire 10/08/2020.

- \* If you return this well to service or plug it, please notify the District Office.
- \* If you sell this well you are required to file a Transfer of Operator form, T-1.
- \* If the well will remain temporarily abandoned, you must submit a new TA application, CP-111, before 10/08/2020.

You may contact me at the number above if you have questions.

Very truly yours,

RICHARD WILLIAMS "