

KANSAS CORPORATION COMMISSION
OIL & GAS CONSERVATION DIVISION

Form must be Typed

Form must be signed

All blanks must be complete

TEMPORARY ABANDONMENT WELL APPLICATION

OPERATOR: License# _____

Name: _____

Address 1: _____

Address 2: _____

City: _____ State: _____ Zip: _____ + _____

Contact Person: _____

Phone: (_____) _____

Contact Person Email: _____

Field Contact Person: _____

Field Contact Person Phone: (_____) _____

API No. 15- _____

Spot Description: _____

____ - ____ - ____ - ____ Sec. _____ Twp. _____ S. R. _____ ☐ E ☐ W_____ feet from ☐ N / ☐ S Line of Section_____ feet from ☐ E / ☐ W Line of Section

GPS Location: Lat: _____, Long: _____

(e.g. xx.xxxxx) (e.g. -xxx.xxxxx)

Datum: ☐ NAD27 ☐ NAD83 ☐ WGS84County: _____ Elevation: _____ ☐ GL ☐ KB

Lease Name: _____ Well #: _____

Well Type: (check one) ☐ Oil ☐ Gas ☐ OG ☐ WSW ☐ Other: _____☐ SWD Permit #: _____ ☐ ENHR Permit #: _____☐ Gas Storage Permit #: _____

Spud Date: _____ Date Shut-In: _____

	Conductor	Surface	Production	Intermediate	Liner	Tubing
Size						
Setting Depth						
Amount of Cement						
Top of Cement						
Bottom of Cement						

Casing Fluid Level from Surface: _____ How Determined? _____ Date: _____

Casing Squeeze(s): _____ to _____ w / _____ sacks of cement, _____ to _____ w / _____ sacks of cement. Date: _____
(top) (bottom) (top) (bottom)Do you have a valid Oil & Gas Lease? ☐ Yes ☐ NoDepth and Type: ☐ Junk in Hole at _____ ☐ Tools in Hole at _____ Casing Leaks: ☐ Yes ☐ No Depth of casing leak(s): _____
(depth) (depth)Type Completion: ☐ ALT. I ☐ ALT. II Depth of: ☐ DV Tool: _____ w / _____ sacks of cement ☐ Port Collar: _____ w / _____ sack of cement
(depth) (depth)

Packer Type: _____ Size: _____ Inch Set at: _____ Feet

Total Depth: _____ Plug Back Depth: _____ Plug Back Method: _____

Geological Data:**Formation Name**

Formation Top Formation Base

Completion Information

1. _____ At: _____ to _____ Feet Perforation Interval _____ to _____ Feet or Open Hole Interval _____ to _____ Feet

2. _____ At: _____ to _____ Feet Perforation Interval _____ to _____ Feet or Open Hole Interval _____ to _____ Feet

UNDER PENALTY OF PERJURY I HEREBY ATTEST THAT THE INFORMATION CONTAINED HEREIN IS TRUE AND CORRECT TO THE BEST OF MY KNOWLEDGE

Submitted Electronically

**Do NOT Write in This
Space - KCC USE ONLY**

Date Tested: _____ Results: _____ Date Plugged: _____ Date Repaired: _____ Date Put Back in Service: _____

Review Completed by: _____ Comments: _____

TA Approved: ☐ Yes ☐ Denied Date: _____**Mail to the Appropriate KCC Conservation Office:**

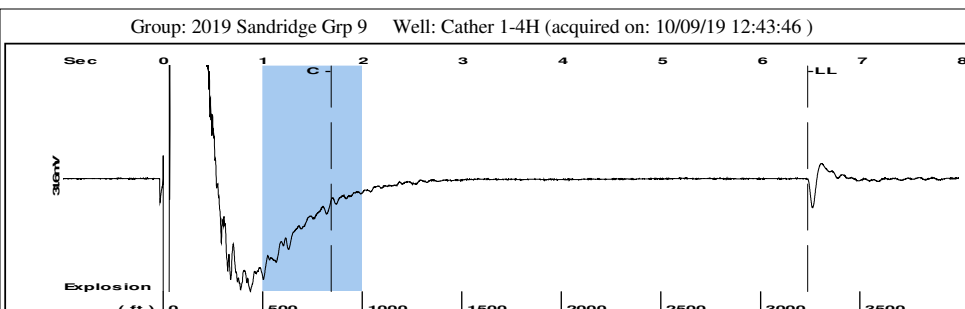
	KCC District Office #1 - 210 E. Frontview, Suite A, Dodge City, KS 67801	Phone 620.682.7933
	KCC District Office #2 - 3450 N. Rock Road, Building 600, Suite 601, Wichita, KS 67226	Phone 316.337.7400
	KCC District Office #3 - 137 E. 21st St., Chanute, KS 66720	Phone 620.902.6450
	KCC District Office #4 - 2301 E. 13th Street, Hays, KS 67601-2651	Phone 785.261.6250

General		
Well ID	120715	
Well	Cather 1-4H	
Company	Sandridge	
Operator	- * -	
Lease Name	Cather 1-4H	
Elevation	1267.00	ft
Production Method	Other	
Dataset Description		
Comment		

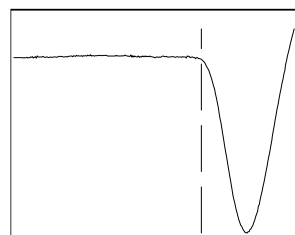
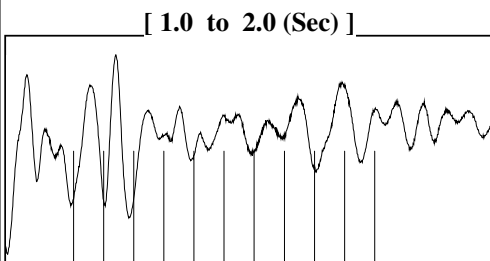
Surface Unit		
Manufacturer	- * -	
Unit Class	Conventional	
Unit API Number	- * -	
Measured Stroke Length	100.000	in
Rotation	CW	
Counter Balance Effect (Weights Level)	- * -	Klb
Weight Of Counter Weights	2000	lb
Prime Mover		
Motor Type	Electric	
Rated HP	- * -	HP
Run Time	24	hr/day
MFG/Comment	- * -	
Electric Motor Parameters		
Rated Full Load AMPS	- * -	
Rated Full Load RPM	- * -	
Synchronous RPM	1200	
Voltage	- * -	
Hertz	60	
Phase	3	
Power Consumption	5	
Power Demand	8	\$/KW

Tubulars			Pump			
Tubing OD	2.875	in	Plunger Diameter	- * -	in	
Casing OD	7.000	in	Pump Intake Depth	4863.00	ft	
Average Joint Length	31.700	ft	**Total Rod Length < Pump Depth			
Anchor Depth	- * -	ft	Polished Rod			
Kelly Bushing	22.00	ft	Polished Rod Diameter	- * -	in	
Rod String						
	Top Taper	Taper 2	Taper 3	Taper 4	Taper 5	Taper 6
Rod Type	- * -	- * -	- * -	- * -	- * -	- * -
Rod Length	- * -	- * -	- * -	- * -	- * -	- * - ft
Rod Diameter	- * -	- * -	- * -	- * -	- * -	- * - in
Rod Weight	0.0	0.0	0.0	0.0	0.0	0.0 lb
Total Rod Length	0					
Total Rod Weight	0.00					
Damp Up	0.05					
Damp Down	0.05					

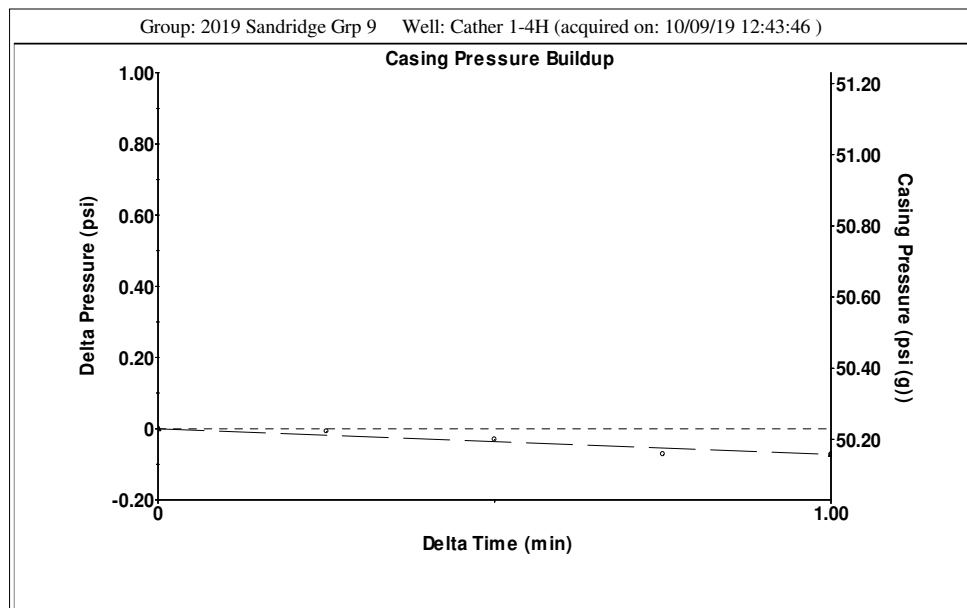
Conditions			
Pressure		Production	
Static BHP	987.8 psi (g)	Oil Production	0 BBL/D
Static BHP Method	Acoustic	Water Production	1 BBL/D
Static BHP Date	10/09/2019	Gas Production	- * - Mscf/D
		Production Date	10/08/2019
Producing BHP	- * - psi (g)	Temperatures	
Producing BHP Method	- * -	Surface Temperature	70 deg F
Producing BHP Date	- * -	Bottomhole Temperature	150 deg F
Formation Depth	5305.00 ft	Fluid Properties	
Surface Producing Pressures		Oil API	40 deg.API
Tubing Pressure	- * - psi (g)	Water Specific Gravity	1.05 Sp.Gr.H2O
Casing Pressure	50.2 psi (g)		
Casing Pressure Buildup			
Change in Pressure	-0.072 psi		
Over Change in Time	1.00 min		



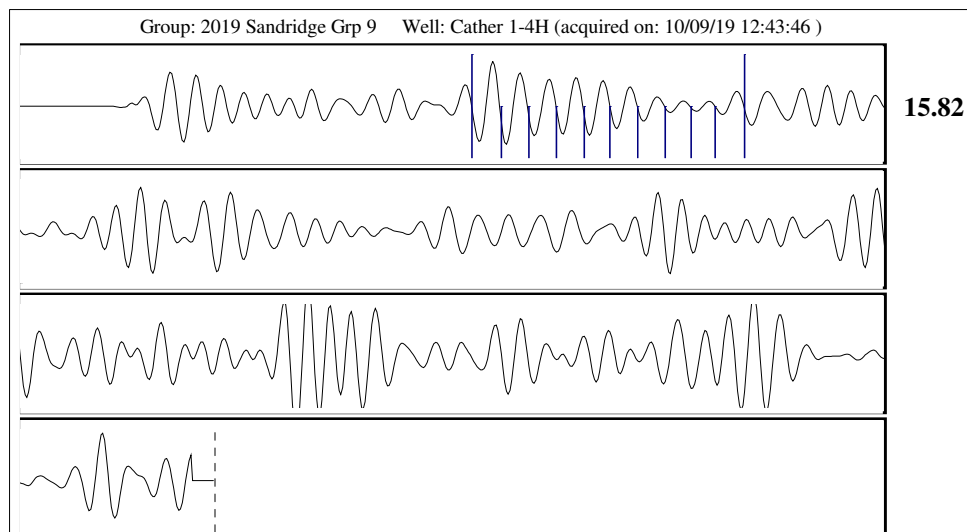
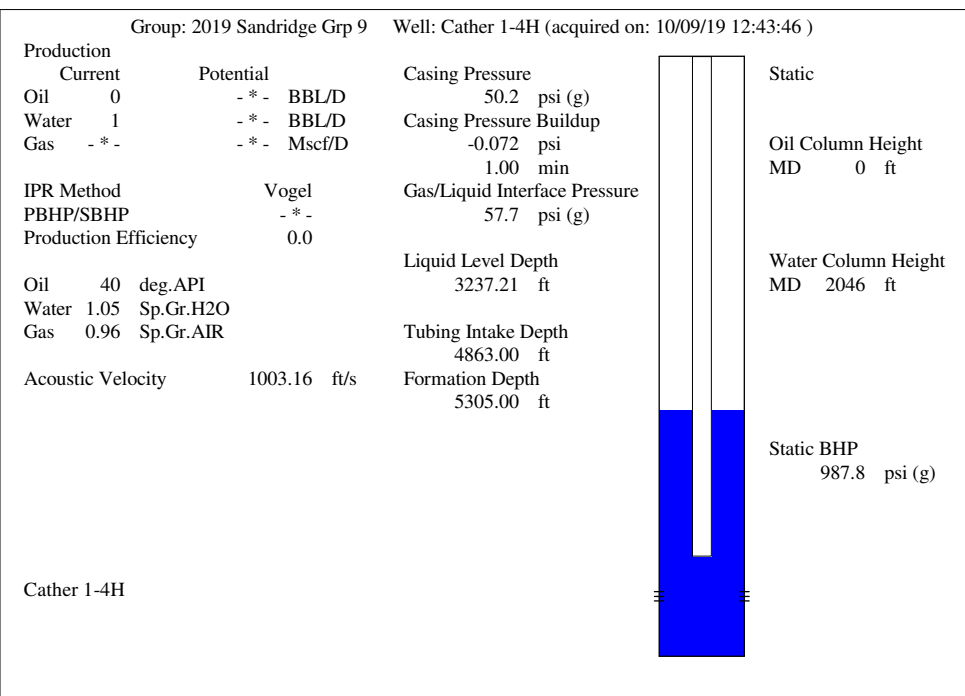
Filter Type High Pass Automatic Collar Count Yes Time 6.454 sec
Manual Acoustic Veloc 1024.23 ft/s Manual JTS/sec 16.1551 Joints 102.12 Jts
Depth 3237.21 ft



Analysis Method: Automatic



Change in Pressure -0.07 psi PT16722
Change in Time 1.00 min Range 0 - ? psi



Acoustic Velocity 1003.16 ft/s Joints counted 10
Joints Per Second 15.8228 jts/sec Joints to liquid level 102.12
Depth to liquid level 3237.21 ft Filter Width 14.1551 18.1551
Automatic Collar Count Yes Time to 1st Collar 1.048 1.68

October 17, 2019

Laci Bevans
SandRidge Exploration and Production LLC
123 ROBERT S. KERR AVE
OKLAHOMA CITY, OK 73102-6406

Re: Temporary Abandonment
API 15-077-21829-01-00
CATHER 1-4H
SW/4 Sec.04-35S-07W
Harper County, Kansas

Dear Laci Bevans:

"Your temporary abandonment (TA) application for the well listed above has been approved. In accordance with K.A.R. 82-3-111 the TA status of this well will expire 10/17/2020.

- * If you return this well to service or plug it, please notify the District Office.
- * If you sell this well you are required to file a Transfer of Operator form, T-1.
- * If the well will remain temporarily abandoned, you must submit a new TA application, CP-111, before 10/17/2020.

You may contact me at the number above if you have questions.

Very truly yours,

Steve VanGieson"