

KANSAS CORPORATION COMMISSION
OIL & GAS CONSERVATION DIVISION

TEMPORARY ABANDONMENT WELL APPLICATION

All blanks must be complete

OPERATOR: License# _____
Name: _____
Address 1: _____
Address 2: _____
City: _____ State: _____ Zip: _____ + _____
Contact Person: _____
Phone: (_____) _____
Contact Person Email: _____
Field Contact Person: _____
Field Contact Person Phone: (_____) _____

API No. 15- _____
Spot Description: _____
____ - ____ - ____ - ____ Sec. _____ Twp. _____ S. R. _____ E W
_____ feet from N / S Line of Section
_____ feet from E / W Line of Section
GPS Location: Lat: _____, Long: _____
(e.g. xx.xxxxx) (e.g. -xxx.xxxxx)
Datum: NAD27 NAD83 WGS84
County: _____ Elevation: _____ GL KB
Lease Name: _____ Well #: _____
Well Type: (check one) Oil Gas OG WSW Other: _____
 SWD Permit #: _____ ENHR Permit #: _____
 Gas Storage Permit #: _____
Spud Date: _____ Date Shut-In: _____

	Conductor	Surface	Production	Intermediate	Liner	Tubing
Size						
Setting Depth						
Amount of Cement						
Top of Cement						
Bottom of Cement						

Casing Fluid Level from Surface: _____ How Determined? _____ Date: _____
Casing Squeeze(s): _____ to _____ w / _____ sacks of cement, _____ to _____ w / _____ sacks of cement. Date: _____
(top) (bottom) (top) (bottom)
Do you have a valid Oil & Gas Lease? Yes No
Depth and Type: Junk in Hole at _____ Tools in Hole at _____ Casing Leaks: Yes No Depth of casing leak(s): _____
(depth) (depth)
Type Completion: ALT. I ALT. II Depth of: DV Tool: _____ w / _____ sacks of cement Port Collar: _____ w / _____ sack of cement
(depth) (depth)
Packer Type: _____ Size: _____ Inch Set at: _____ Feet
Total Depth: _____ Plug Back Depth: _____ Plug Back Method: _____

Geological Data:

Formation Name	Formation Top	Formation Base	Completion Information
1. _____	At: _____	to _____ Feet	Perforation Interval _____ to _____ Feet or Open Hole Interval _____ to _____ Feet
2. _____	At: _____	to _____ Feet	Perforation Interval _____ to _____ Feet or Open Hole Interval _____ to _____ Feet

UNDER PENALTY OF PERJURY I HEREBY ATTEST THAT THE INFORMATION CONTAINED HEREIN IS TRUE AND CORRECT TO THE BEST OF MY KNOWLEDGE

Submitted Electronically

Do NOT Write in This Space - KCC USE ONLY

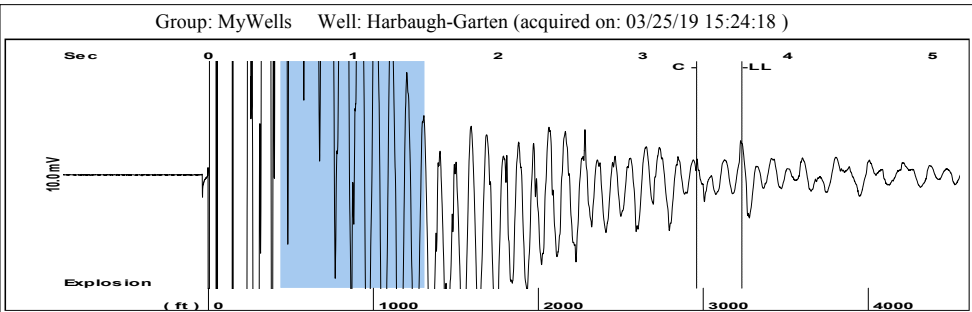
Date Tested: _____ Results: _____ Date Plugged: _____ Date Repaired: _____ Date Put Back in Service: _____

Review Completed by: _____ Comments: _____

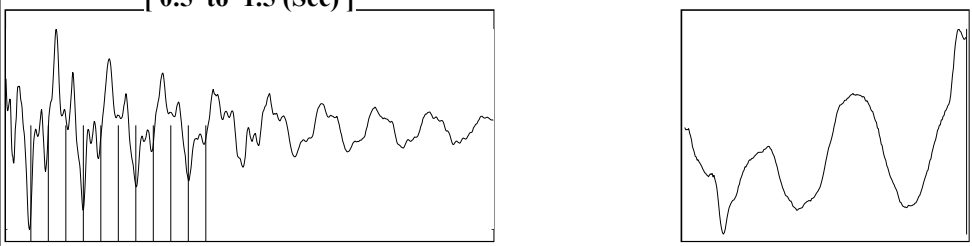
TA Approved: Yes Denied Date: _____

Mail to the Appropriate KCC Conservation Office:

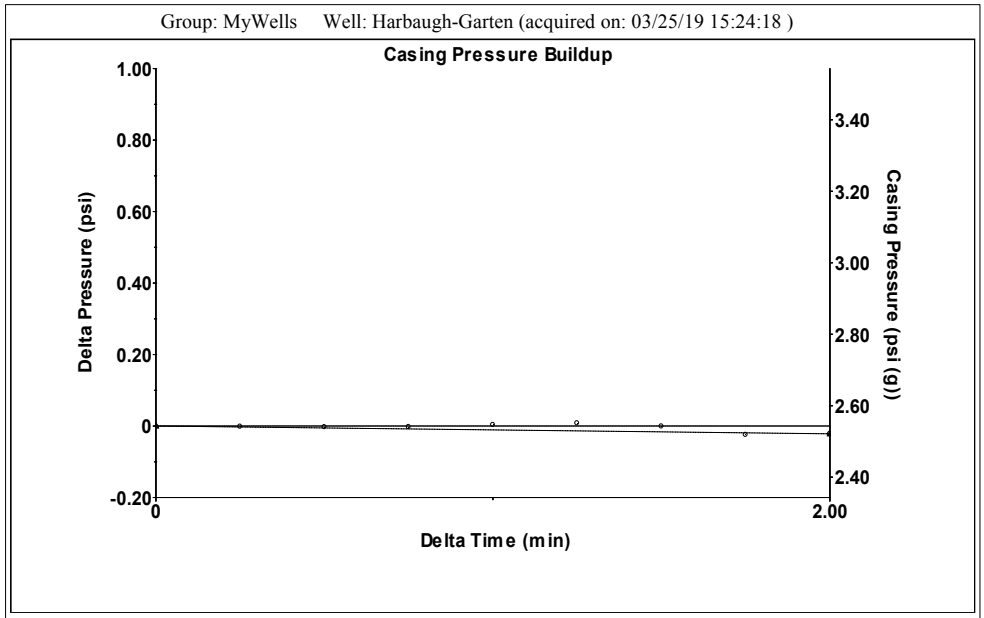
	KCC District Office #1 - 210 E. Frontview, Suite A, Dodge City, KS 67801	Phone 620.682.7933
	KCC District Office #2 - 3450 N. Rock Road, Building 600, Suite 601, Wichita, KS 67226	Phone 316.337.7400
	KCC District Office #3 - 137 E. 21st St., Chanute, KS 66720	Phone 620.902.6450
	KCC District Office #4 - 2301 E. 13th Street, Hays, KS 67601-2651	Phone 785.261.6250



Filter Type High Pass Automatic Collar Count Yes Time 3.685 sec
 Manual Acoustic Velo 1755.43 ft/s Manual JTS/sec 27.8552 Joints 102.623 Jts
 Depth 3233.66 ft



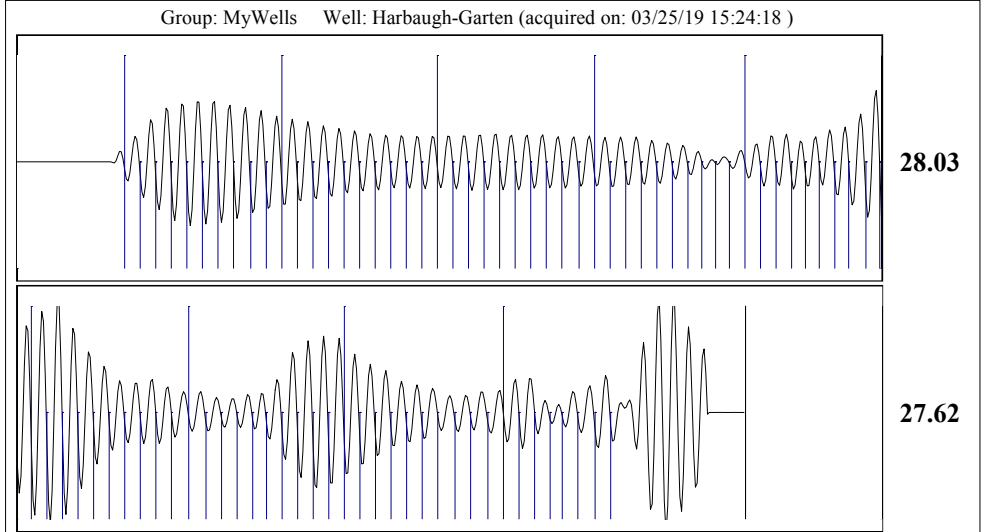
Analysis Method: Automatic



Change in Pressure -0.02 psi PT12865
 Change in Time 2.00 min Range 0 - ? psi

Group: MyWells Well: Harbaugh-Garten (acquired on: 03/25/19 15:24:18)

Production	Potential	Casing Pressure		Producing	
Current	- * - BBL/D	2.5 psi (g)		Annular Gas Flow	0 Mscf/D
Oil - * -	- * - BBL/D	Casing Pressure Buildup		% Liquid	100 %
Water - * -	- * - Mscf/D	-0.022 psi		Liquid Level Depth	3233.66 ft
Gas - * -		2.00 min	Pump Intake Depth	4509.00 ft	
IPR Method	Vogel	Gas/Liquid Interface Pressure	Formation Depth	4509.00 ft	
PBHP/SBHP	- * -	3.6 psi (g)			
Production Efficiency	0.0		Pump Intake	427.5 psi (g)	
			Producing BHP	427.5 psi (g)	
			Static BHP	- * - psi (g)	
Oil 40 deg.API		Liquid Level Depth			
Water 1.05 Sp.Gr.H2O		3233.66 ft			
Gas 0.55 Sp.Gr.AIR		Pump Intake Depth			
		4509.00 ft			
Acoustic Velocity 1755.04 ft/s		Formation Depth			
		4509.00 ft			
Formation Submergence					
Total Gaseous Liquid Column HT (TVD)		1275 ft			
Equivalent Gas Free Liquid HT (TVD)		1275 ft			
Acoustic Test					



Acoustic Velocity 1755.04 ft/s Joints counted 87
 Joints Per Second 27.8489 jts/sec Joints to liquid level 102.623
 Depth to liquid level 3233.66 ft Filter Width 25.8552 29.8552
 Automatic Collar Count Yes Time to 1st Collar 0.248 3.372

PERFORATIONS:

WELL - HARBAUGH #1

LEGAL DESCR. – NE SE/4 OF 36-32s-10w BARBER CO. KS.

API # - 15-007-20,356

PBTD - 4505', 4460' (ELI 1/27/06), SAND FILL TO 4252', SWAB TOOLS 4350'

CIBP'S – 4150' OVER MISS PERFS.

PERFORATIONS:

LOWER MISS	4328'-4440'	2/FT 1/06	PLUG OVER
MISS	4302'-4310'		PLUG OVER
LANS.	4047'-4050'		
LANS.	3993'-3996'		
LANS.	3860'-3864'	(SQZ'D W/90 SX)	
LANS.	3714'-3718'		
LOWER STALNECKER	3691'-3694'		
UPPER STALNECKER	3641'-3645'		

October 22, 2019

Melody C. Fletcher
Oil Producers, Inc. of Kansas
1710 N Waterfront Pkwy
WICHITA, KS 67206-6603

Re: Temporary Abandonment
API 15-007-20356-00-00
HARBAUGH 1
SE/4 Sec.36-32S-10W
Barber County, Kansas

Dear Melody C. Fletcher:

"Your temporary abandonment (TA) application for the well listed above has been approved. In accordance with K.A.R. 82-3-111 the TA status of this well will expire 10/22/2020.

- * If you return this well to service or plug it, please notify the District Office.
- * If you sell this well you are required to file a Transfer of Operator form, T-1.
- * If the well will remain temporarily abandoned, you must submit a new TA application, CP-111, before 10/22/2020.

You may contact me at the number above if you have questions.

Very truly yours,

Michael Maier"