

KANSAS CORPORATION COMMISSION
OIL & GAS CONSERVATION DIVISION

Form must be Typed
Form must be signed

TEMPORARY ABANDONMENT WELL APPLICATION

All blanks must be complete

OPERATOR: License#
Name:
Address 1:
Address 2:
City: State: Zip:
Contact Person:
Phone:
Contact Person Email:
Field Contact Person:
Field Contact Person Phone:

API No. 15-
Spot Description:
Sec. Twp. S. R.
GPS Location: Lat: Long:
Datum: NAD27 NAD83 WGS84
County: Elevation:
Lease Name: Well #:
Well Type: Oil Gas OG WSW Other:
SWD Permit #: ENHR Permit #:
Gas Storage Permit #:
Spud Date: Date Shut-In:

Table with 7 columns: Conductor, Surface, Production, Intermediate, Liner, Tubing. Rows include Size, Setting Depth, Amount of Cement, Top of Cement, Bottom of Cement.

Casing Fluid Level from Surface: How Determined? Date:
Casing Squeeze(s): to w / sacks of cement, to w / sacks of cement. Date:
Do you have a valid Oil & Gas Lease? Yes No
Depth and Type: Junk in Hole at Tools in Hole at Casing Leaks: Yes No Depth of casing leak(s):
Type Completion: ALT. I ALT. II Depth of: DV Tool: w / sacks of cement Port Collar: w / sack of cement
Packer Type: Size: Inch Set at: Feet
Total Depth: Plug Back Depth: Plug Back Method:

Geological Data:

Table with 4 columns: Formation Name, Formation Top, Formation Base, Completion Information. Rows 1 and 2.

UNDER PENALTY OF PERJURY I HEREBY ATTEST THAT THE INFORMATION CONTAINED HEREIN IS TRUE AND CORRECT TO THE BEST OF MY KNOWLEDGE

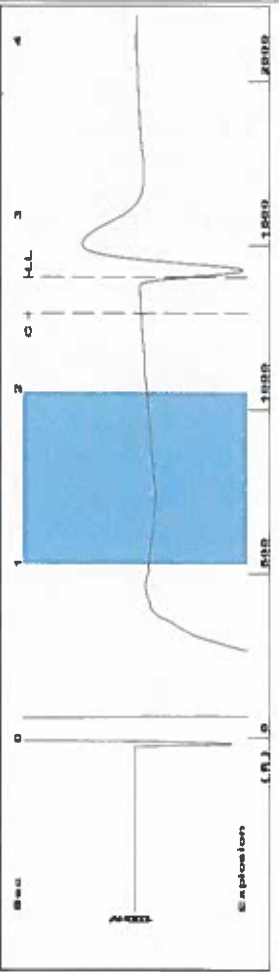
Submitted Electronically

Do NOT Write in This Space - KCC USE ONLY
Date Tested: Results: Date Plugged: Date Repaired: Date Put Back in Service:
Review Completed by: Comments:
TA Approved: Yes Denied Date:

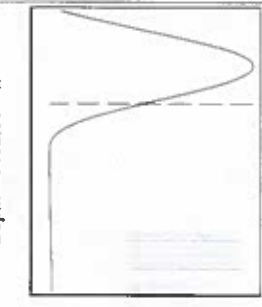
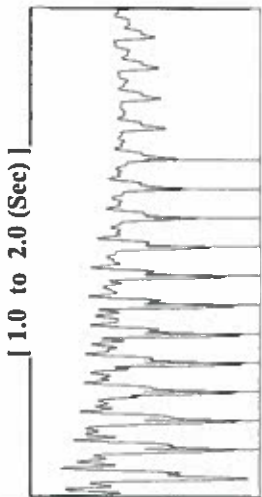
Mail to the Appropriate KCC Conservation Office:

Table with 2 columns: Office Address, Phone. Rows for KCC District Office #1, #2, #3, #4.

Group: SUBLETTE Well: Blair C-5 (acquired on: 10/18/19 10:23:10)



Filter Type High Pass
Manual Acoustic Velo 1069.14 ft/s
Automatic Collar Count Yes
Manual JTS/sec 16,8634

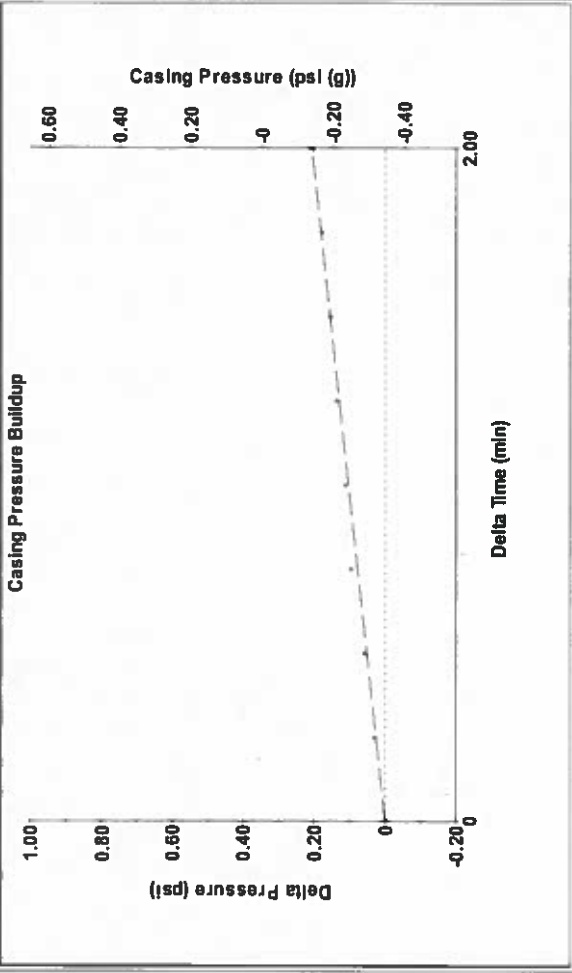


Analysis Method: Automatic

Group: SUBLETTE Well: Blair C-5 (acquired on: 10/18/19 10:23:10)

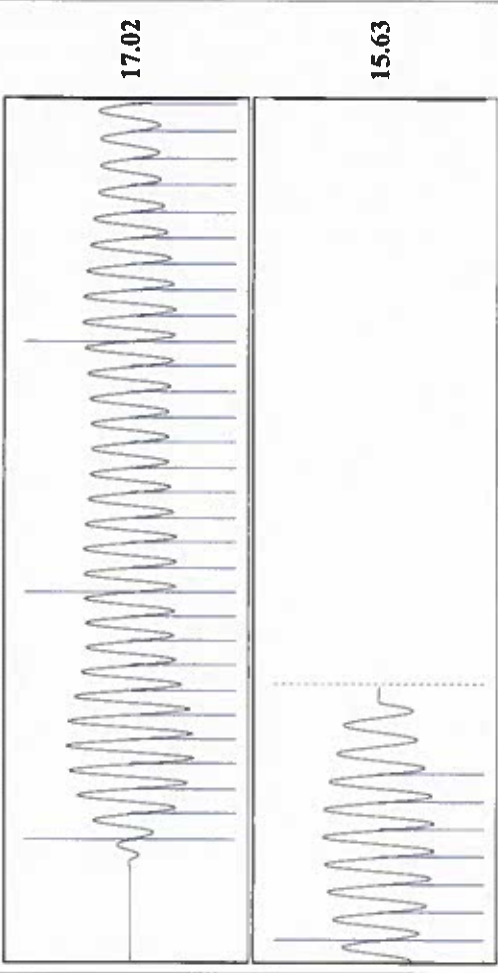
Production Current	Potential	Casing Pressure	Producing
Oil -.- BBL/D	-.- BBL/D	-0.3 psi (g)	Annular Gas Flow
Water -.- BBL/D	-.- BBL/D	0.2 psi	% Liquid
Gas -.- Mscf/D	-.- Mscf/D	2.00 min	93 %
IPR Method Vogel	0.0	Gas/Liquid Interface Pressure	0.3 psi (g)
PBHP/SBHP		Liquid Level Depth	
Production Efficiency		1402.11 ft	
Oil 40 deg API		Pump Intake Depth	
Water 1.05 Sp.Gr.H2O		4402.00 ft	
Gas 0.91 Sp.Gr.AIR		Formation Depth	
Acoustic Velocity 1060.59 ft/s		4960.00 ft	
Formation Submergence			
Total Gaseous Liquid Column HIT (TVD)	3000 ft		
Equivalent Gas Free Liquid HIT (TVD)	2805 ft		
10/18/2019			

Group: SUBLETTE Well: Blair C-5 (acquired on: 10/18/19 10:23:10)



Change in Pressure 0.21 psi
Change in Time 2.00 min
PT14679 Range

Group: SUBLETTE Well: Blair C-5 (acquired on: 10/18/19 10:23:10)



Acoustic Velocity 1060.59 ft/s
Joints Per Second 16.7286 Jts/sec
Depth to liquid level 1402.11 ft
Automatic Collar Count Yes
Joints counted 36
Joints to liquid level 44,2305
Filter Width 18,8634
Time to 1st Collar 0.284

October 22, 2019

Katherine McClurkan
Merit Energy Company, LLC
13727 Noel Road, Suite 1200
Dallas, TX 75240

Re: Temporary Abandonment
API 15-081-21610-00-00
Blair C 5
NW/4 Sec.29-30S-33W
Haskell County, Kansas

Dear Katherine McClurkan:

"Your temporary abandonment (TA) application for the well listed above has been approved. In accordance with K.A.R. 82-3-111 the TA status of this well will expire 10/22/2020.

- * If you return this well to service or plug it, please notify the District Office.
- * If you sell this well you are required to file a Transfer of Operator form, T-1.
- * If the well will remain temporarily abandoned, you must submit a new TA application, CP-111, before 10/22/2020.

You may contact me at the number above if you have questions.

Very truly yours,

Michael Maier"