

KANSAS CORPORATION COMMISSION
OIL & GAS CONSERVATION DIVISION

TEMPORARY ABANDONMENT WELL APPLICATION

OPERATOR: License#
Name:
Address 1:
Address 2:
City: State: Zip:
Contact Person:
Phone:
Contact Person Email:
Field Contact Person:
Field Contact Person Phone:

API No. 15-
Spot Description:
Sec. Twp. S. R.
GPS Location: Lat, Long
Datum: NAD27, NAD83, WGS84
County: Elevation:
Lease Name: Well #:
Well Type: Oil, Gas, OG, WSW, Other
SWD Permit #: ENHR Permit #:
Gas Storage Permit #:
Spud Date: Date Shut-In:

Table with 7 columns: Conductor, Surface, Production, Intermediate, Liner, Tubing. Rows include Size, Setting Depth, Amount of Cement, Top of Cement, Bottom of Cement.

Casing Fluid Level from Surface: How Determined? Date:
Casing Squeeze(s): to w / sacks of cement, to w / sacks of cement. Date:
Do you have a valid Oil & Gas Lease? Yes No
Depth and Type: Junk in Hole at Tools in Hole at Casing Leaks: Yes No Depth of casing leak(s):
Type Completion: ALT. I ALT. II Depth of: DV Tool: w / sacks of cement Port Collar: w / sack of cement
Packer Type: Size: Inch Set at: Feet
Total Depth: Plug Back Depth: Plug Back Method:

Geological Date:

Table with 4 columns: Formation Name, Formation Top, Formation Base, Completion Information. Rows 1 and 2.

UNDER PENALTY OF PERJURY I HEREBY ATTEST THAT THE INFORMATION CONTAINED HEREIN IS TRUE AND CORRECT TO THE BEST OF MY KNOWLEDGE

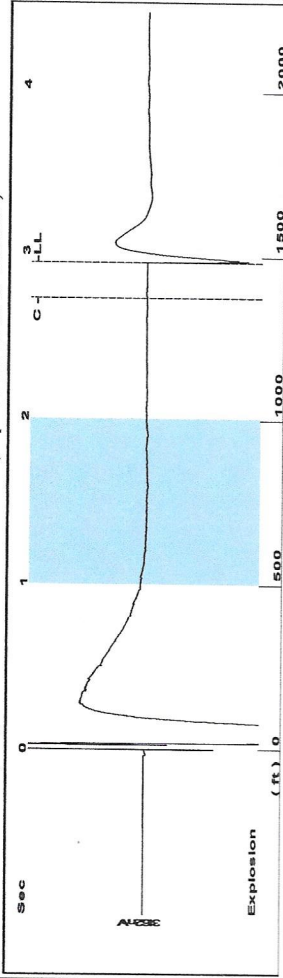
Submitted Electronically

Do NOT Write in This Space - KCC USE ONLY
Date Tested: Results: Date Plugged: Date Repaired: Date Put Back in Service:
Review Completed by: Comments:
TA Approved: Yes Denied Date:

Mail to the Appropriate KCC Conservation Office:

Table with 2 columns: Office Address, Phone. Rows for District Office #1, #2, #3, #4.

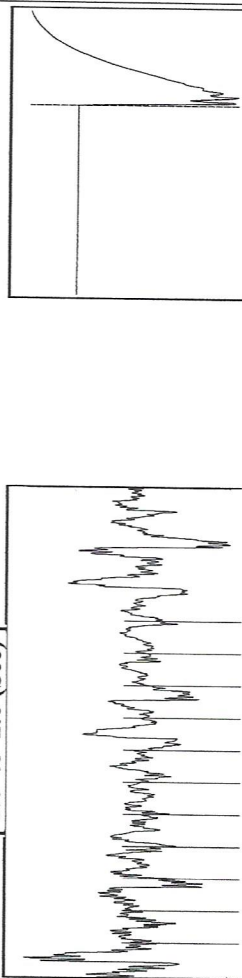
Group: MyWells Well: Veda Loomis #4 (acquired on: 10/15/19 13:18:13 )



Filter Type High Pass Automatic Collar Count Yes  
 Manual Acoustic Veloc 958.904 ft/s Manual JTS/sec 15.2207

Time 2.933 sec  
 Joints 470894 Jts  
 Depth 1483.32 ft

1.0 to 2.0 (Sec)

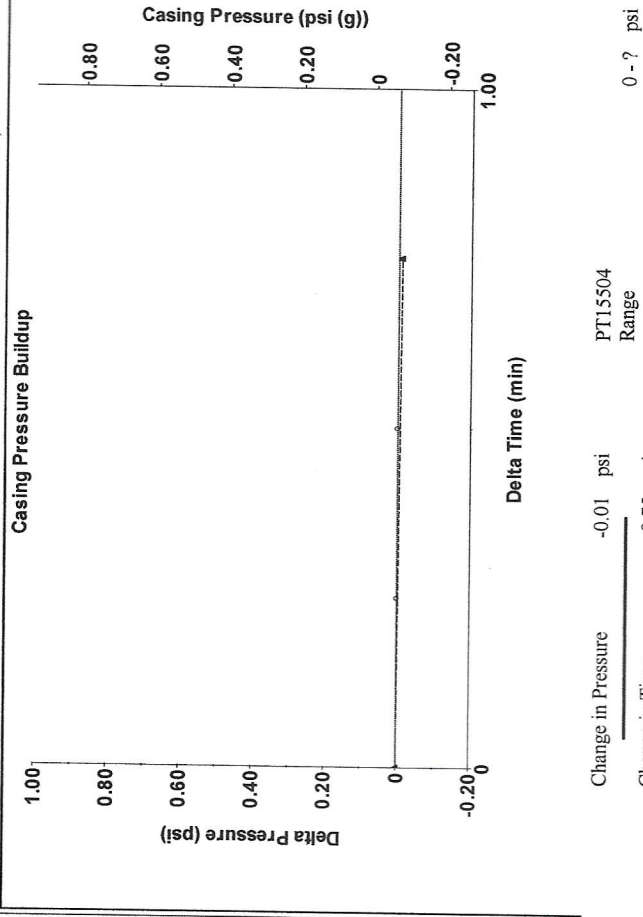


**Analysis Method: Automatic**

Group: MyWells Well: Veda Loomis #4 (acquired on: 10/15/19 13:18:13 )

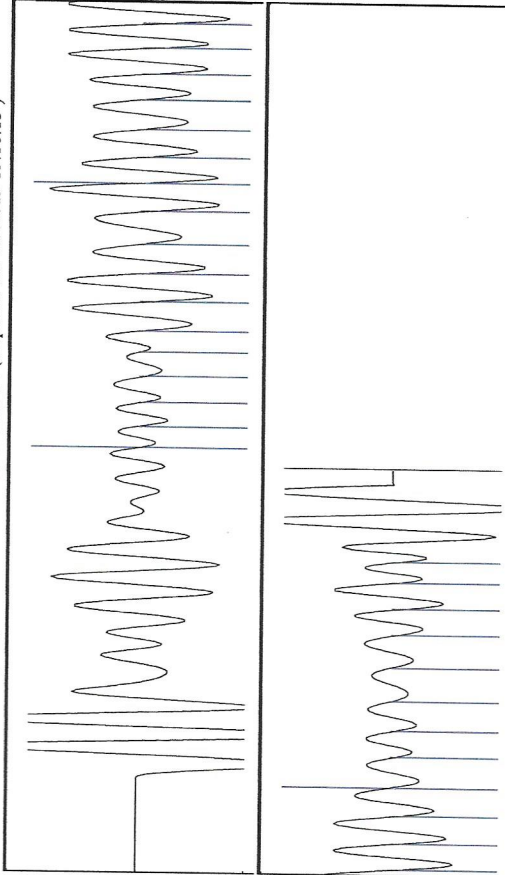
Production	Potential	Casing Pressure	Producing
Oil 0	- * - BBL/D	-0.1 psi (g)	Annular
Water 0	- * - BBL/D	-0.009 psi	Gas Flow 0 Mscf/D
Gas 0.0	- * - Mscf/D	0.75 min	% Liquid 100 %
IPR Method	Vogel	Gas/Liquid Interface Pressure	Pump Intake
PBHP/SBHP	- * -	0.7 psi (g)	1416.8 psi (g)
Production Efficiency	0.0	Liquid Level Depth	Producing BHP
Oil 39 deg API		1483.32 ft	1292.2 psi (g)
Water 1.05 Sp.Gr.H2O		Pump Intake Depth	Static BHP
Gas 0.96 Sp.Gr.AIR		4598.00 ft	- * - psi (g)
Acoustic Velocity	1011.47 ft/s	Formation Depth	
Formation Submergence		4324.00 ft	
Total Gaseous Liquid Column HT (TVD)	3115 ft		
Equivalent Gas Free Liquid HT (TVD)	3115 ft		
Acoustic Test			

Group: MyWells Well: Veda Loomis #4 (acquired on: 10/15/19 13:18:13 )



Change in Pressure -0.01 psi  
 Change in Time 0.75 min  
 PT15504 Range

Group: MyWells Well: Veda Loomis #4 (acquired on: 10/15/19 13:18:13 )



Acoustic Velocity 1011.47 ft/s  
 Joints counted 28  
 Joints to liquid level 470894  
 Depth to liquid level 1483.32 ft  
 Filter Width 17.2207  
 Automatic Collar Count Yes  
 Time to 1st Collar 0.976

October 29, 2019

Chris Peters  
Hartman Oil Co., Inc.  
10500 E BERKELEY SQ PKWY STE 100  
WICHITA, KS 67206

Re: Temporary Abandonment  
API 15-055-20542-00-00  
LOOMIS VEDA 4  
NW/4 Sec.30-21S-33W  
Finney County, Kansas

Dear Chris Peters:

"Your temporary abandonment (TA) application for the well listed above has been approved. In accordance with K.A.R. 82-3-111 the TA status of this well will expire 10/29/2020.

- \* If you return this well to service or plug it, please notify the District Office.
- \* If you sell this well you are required to file a Transfer of Operator form, T-1.
- \* If the well will remain temporarily abandoned, you must submit a new TA application, CP-111, before 10/29/2020.

You may contact me at the number above if you have questions.

Very truly yours,

Michael Maier"