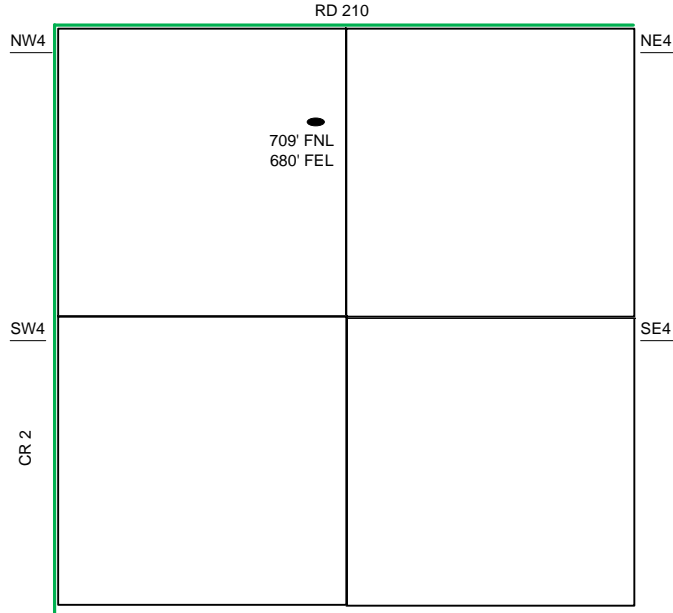
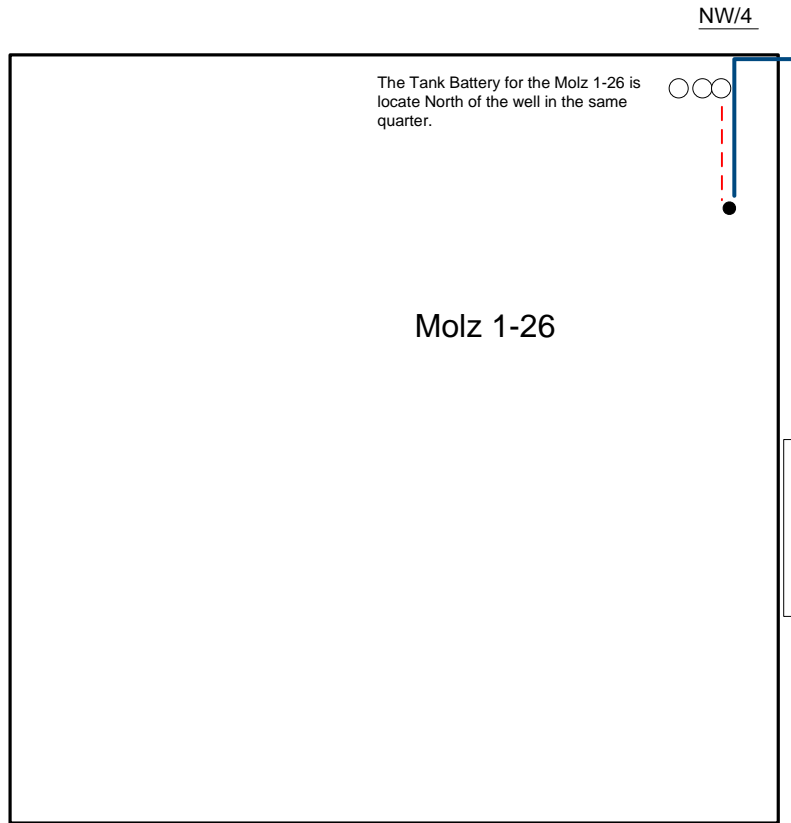


Proposed Plan of Construction

Molz 1-26
Sec 26 T23S-R35W
Kearny County, KS



Sec 26 – T23S – R35W



Proposed Details of
NW/4 Sec 26 – T23S – R35W

- Well Location
- Proposed Lease Roads
- Proposed Pipeline
- Proposed Tank Battery
- Proposed Power Lines
- Existing Pipeline

Note-Drawing **Not** to Scale