

T23S, R35W, 6th P.M.

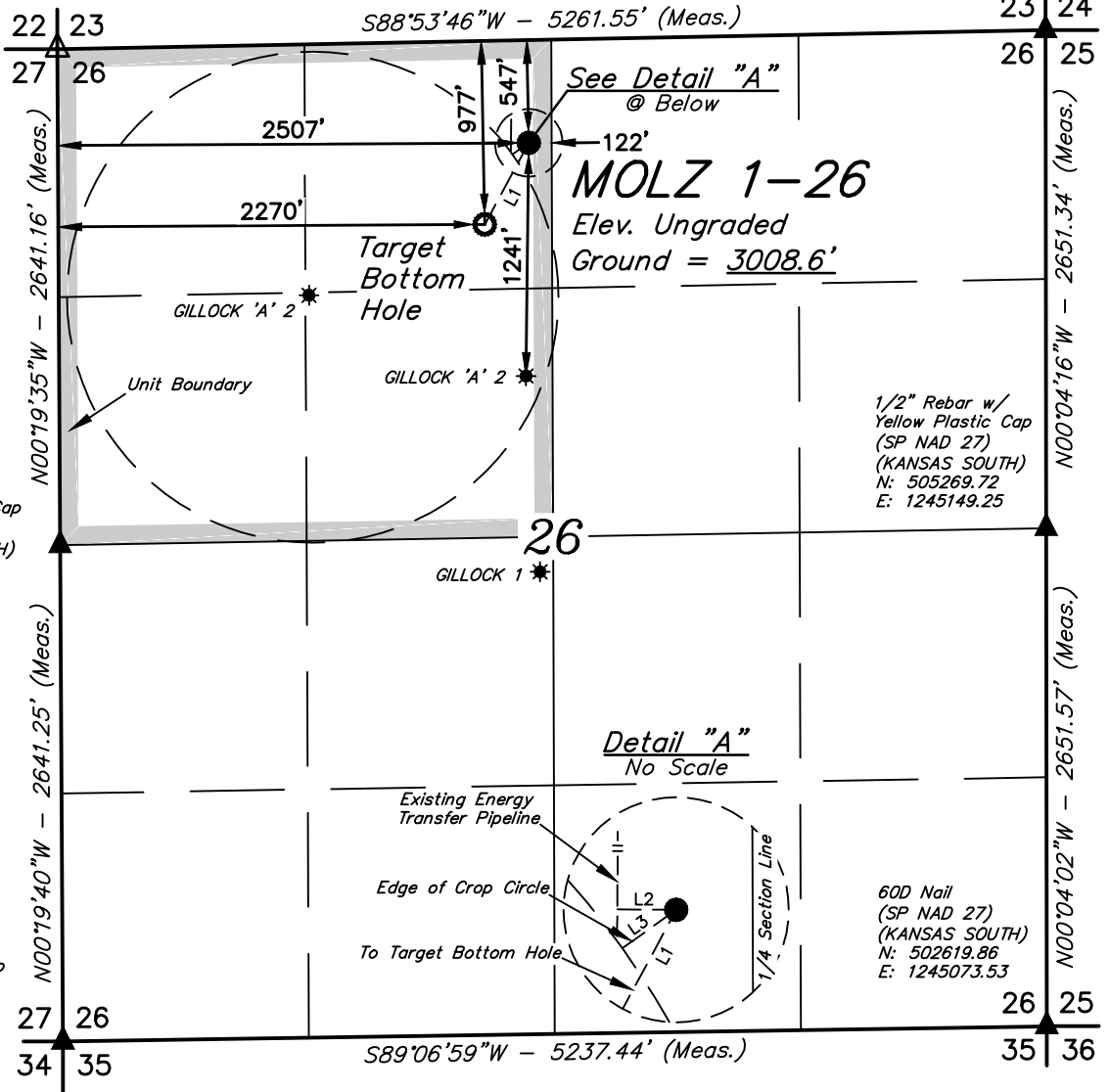
Corner Re-Established
using Reference Markers
(SP NAD 27)
(KANSAS SOUTH)
N: 507974.68
E: 1239964.58

60D Nail Flush
w/ Asphalt
(SP NAD 27)
(KANSAS SOUTH)
N: 507919.36
E: 1245224.77

LEGEND:

- = PROPOSED WELLHEAD.
- = TARGET BOTTOM HOLE.
- ▲ = SECTION CORNERS LOCATED.
- △ = SECTION CORNERS RE-ESTABLISHED. (Not Set on Ground.) (NAD 83)
- * = EXISTING WELLS

NOTE:
• Distances referenced on plat to section lines are perpendicular.



LINE TABLE		
LINE	DIRECTION	LENGTH
L1	S28°19'40"W	493.42'
L2	N89°35'32"W	94.35'
L3	S54°27'55"W	105.89'

1/2" Rebar w/
Yellow Plastic Cap
(SP NAD 27)
(KANSAS SOUTH)
N: 502695.05
E: 11239837.68



NAD 83 (SURFACE LOCATION)	NAD 83 (TARGET BOTTOM HOLE)
LATITUDE = 38°01'51.08" (38.030856)	LATITUDE = 38°01'46.79" (38.029665)
LONGITUDE = 101°07'51.07" (101.130854)	LONGITUDE = 101°07'54.01" (101.131669)
NAD 27 (SURFACE LOCATION)	NAD 27 (TARGET BOTTOM HOLE)
LATITUDE = 38°01'51.00" (38.030834)	LATITUDE = 38°01'46.71" (38.029642)
LONGITUDE = 101°07'49.47" (101.130409)	LONGITUDE = 101°07'52.41" (101.131224)
STATE PLANE NAD 83 (KANSAS SOUTH)	STATE PLANE NAD 83 (KANSAS SOUTH)
N: 1819757.13 E: 554682.32	N: 1819330.05 E: 554435.41
STATE PLANE NAD 27 (KANSAS SOUTH)	STATE PLANE NAD 27 (KANSAS SOUTH)
N: 507401.07 E: 1242457.90	N: 506974.00 E: 1242211.00

CERTIFICATE
THIS IS TO CERTIFY THAT THE ABOVE PLAT WAS PREPARED FROM FIELD NOTES OF ACTUAL SURVEYS MADE BY ME OR UNDER MY SUPERVISION AND THAT THE SAME ARE TRUE AND CORRECT TO THE BEST OF MY KNOWLEDGE AND BELIEF.



BASIS OF BEARINGS
BASIS OF BEARINGS IS A G.P.S. OBSERVATION
BASIS OF ELEVATION

ELEVATION 3221.6' WAS DERIVED FROM AN OPUS SOLUTION AT
LAT: 38°08'01.41" LONG: 101°16'29.28" AND HAS A DATUM OF NAVD88.



MERIT ENERGY COMPANY

MOLZ 1-26
547' FNL 2507' FWL
NE 1/4 NW 1/4, SECTION 26, T23S, R35W, 6th P.M.
KEARNY COUNTY, KANSAS

SURVEYED BY	J.P.	09-19-19	SCALE
DRAWN BY	T.B.S.	09-20-19	1" = 1000'

WELL LOCATION PLAT



UELS, LLC
Corporate Office * 85 South 200 East
Vernal, UT 84078 * (435) 789-1017

T23S, R35W, 6th P.M.

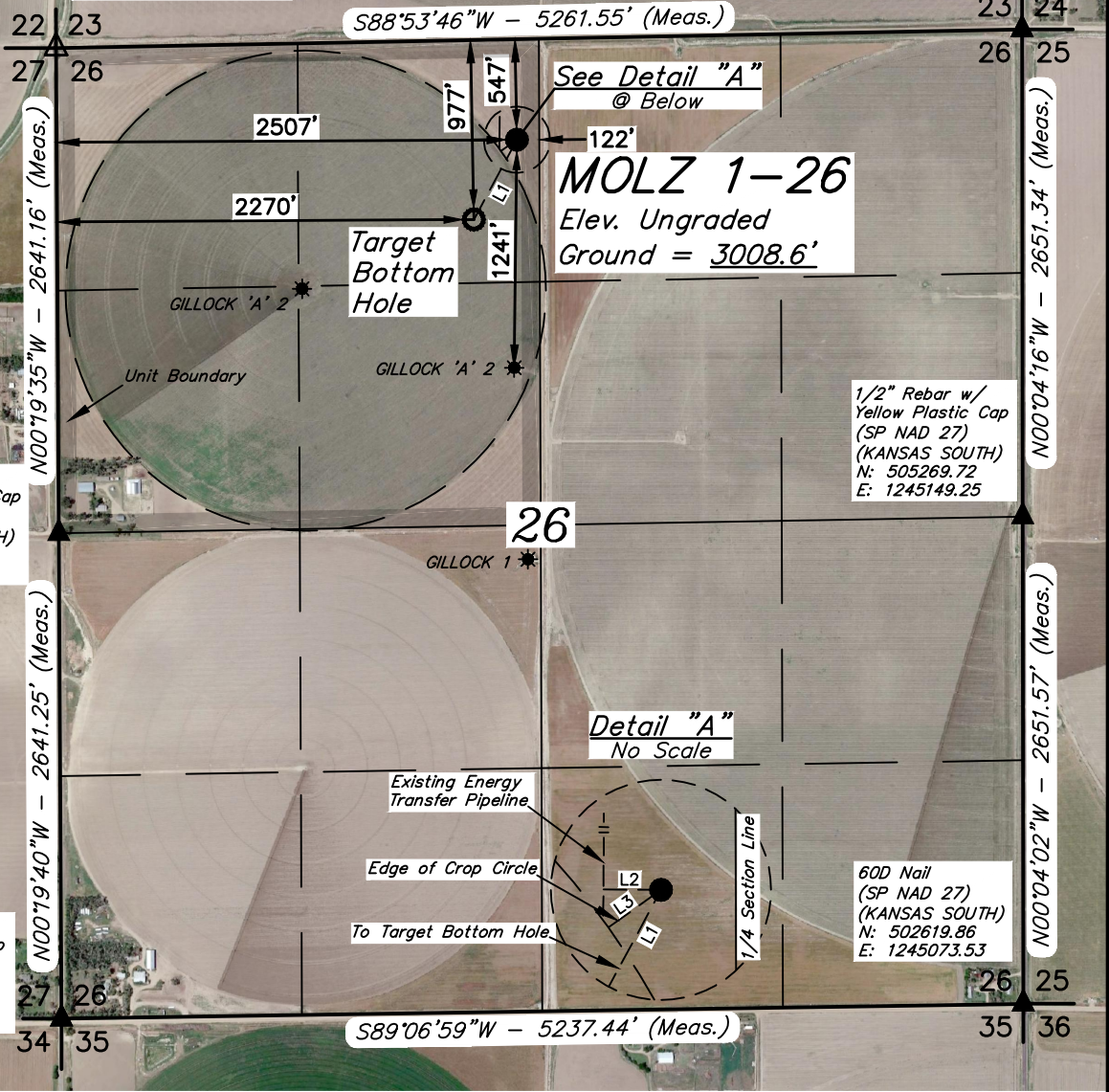
Corner Re-Established using Reference Markers (SP NAD 27) (KANSAS SOUTH)
 N: 507974.68
 E: 1239964.58

60D Nail Flush w/ Asphalt (SP NAD 27) (KANSAS SOUTH)
 N: 507919.36
 E: 1245224.77

LEGEND:

- = PROPOSED WELLHEAD.
- = TARGET BOTTOM HOLE.
- ▲ = SECTION CORNERS LOCATED.
- △ = SECTION CORNERS RE-ESTABLISHED. (Not Set on Ground.) (NAD 83)
- ★ = EXISTING WELLS

NOTE:
 Distances referenced on plat to section lines are perpendicular.



LINE TABLE		
LINE	DIRECTION	LENGTH
L1	S28°19'40"W	493.42'
L2	N89°35'32"W	94.35'
L3	S54°27'55"W	105.89'

1/2" Rebar w/ Yellow Plastic Cap (SP NAD 27) (KANSAS SOUTH)
 N: 505334.91
 E: 1239901.09

1/2" Rebar w/ Yellow Plastic Cap (SP NAD 27) (KANSAS SOUTH)
 N: 502695.05
 E: 11239837.68

1/2" Rebar w/ Yellow Plastic Cap (SP NAD 27) (KANSAS SOUTH)
 N: 505269.72
 E: 1245149.25

60D Nail (SP NAD 27) (KANSAS SOUTH)
 N: 502619.86
 E: 1245073.53



NAD 83 (SURFACE LOCATION)	NAD 83 (TARGET BOTTOM HOLE)
LATITUDE = 38°01'51.08" (38.030856)	LATITUDE = 38°01'46.79" (38.029665)
LONGITUDE = 101°07'51.07" (101.130854)	LONGITUDE = 101°07'54.01" (101.131669)
NAD 27 (SURFACE LOCATION)	NAD 27 (TARGET BOTTOM HOLE)
LATITUDE = 38°01'51.00" (38.030834)	LATITUDE = 38°01'46.71" (38.029642)
LONGITUDE = 101°07'49.47" (101.130409)	LONGITUDE = 101°07'52.41" (101.131224)
STATE PLANE NAD 83 (KANSAS SOUTH)	STATE PLANE NAD 83 (KANSAS SOUTH)
N: 1819757.13 E: 554682.32	N: 1819330.05 E: 554435.41
STATE PLANE NAD 27 (KANSAS SOUTH)	STATE PLANE NAD 27 (KANSAS SOUTH)
N: 507401.07 E: 1242457.90	N: 506974.00 E: 1242211.00

CERTIFICATE

THIS IS TO CERTIFY THAT THE ABOVE PLAT WAS PREPARED FROM FIELD NOTES OF ACTUAL SURVEYS MADE BY ME OR UNDER MY SUPERVISION AND THAT THE SAME ARE TRUE AND CORRECT TO THE BEST OF MY KNOWLEDGE AND BELIEF.

ROBERT JUSTIN PARCE
 LICENSE # 11481
 REGISTERED LAND SURVEYOR
 REGISTRATION # 44534
 STATE OF KANSAS
 09-20-19

BASIS OF BEARINGS
 BASIS OF BEARINGS IS A G.P.S. OBSERVATION

BASIS OF ELEVATION
 ELEVATION 3221.6' WAS DERIVED FROM AN OPUS SOLUTION AT
 LAT: 38°08'01.41" LONG: 101°16'29.28" AND HAS A DATUM OF NAVD88.



MERIT ENERGY COMPANY

MOLZ 1-26
 547' FNL 2507' FWL
 NE 1/4 NW 1/4, SECTION 26, T23S, R35W, 6th P.M.
 KEARNY COUNTY, KANSAS

SURVEYED BY	J.P.	09-19-19	SCALE
DRAWN BY	T.B.S.	09-20-19	1" = 1000'

WELL LOCATION PLAT



UELS, LLC
 Corporate Office * 85 South 200 East
 Vernal, UT 84078 * (435) 789-1017

BEGINNING AT THE INTERSECTION OF US-50 AND MAIN ST. IN DEERFIELD, KANSAS PROCEED IN A NORTHEASTERLY DIRECTION ON US-50 APPROXIMATELY 1.2 MILES TO THE JUNCTION OF THIS ROAD AND AN EXISTING ROAD TO THE NORTH; TURN LEFT AND PROCEED IN A NORTHERLY DIRECTION APPROXIMATELY 2.2 MILES TO THE JUNCTION OF THIS ROAD AND AN EXISTING ROAD TO THE WEST; TURN LEFT AND PROCEED IN A WESTERLY DIRECTION APPROXIMATELY 0.5 MILES TO THE JUNCTION OF THIS ROAD AND AN EXISTING ROAD TO THE SOUTH; TURN LEFT AND PROCEED APPROXIMATELY 0.1 MILES. FROM THIS POINT, THE PROPOSED WELL LOCATION IS APPROXIMATELY 150' WESTERLY.

TOTAL DISTANCE FROM DEERFIELD, KANSAS TO THE PROPOSED WELL LOCATION IS APPROXIMATELY 4.0 MILES.

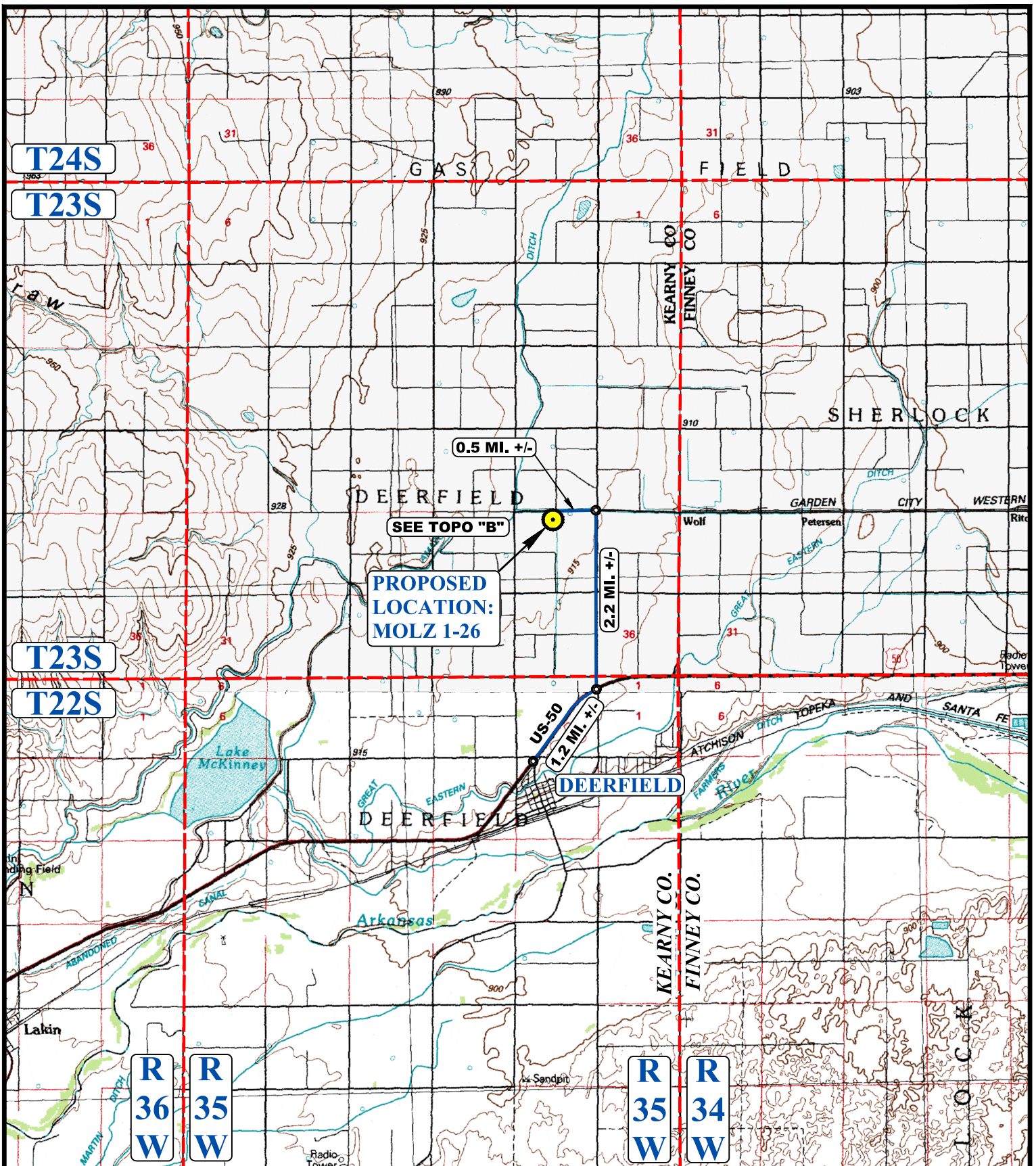
MERIT ENERGY COMPANY

**MOLZ 1-26
547' FNL 2507' FWL
NE 1/4 NW 1/4, SECTION 26, T23S, R35W, 6th P.M.
KEARNY COUNTY, KANSAS**

SURVEYED BY	J.P.	09-19-19	
DRAWN BY	T.B.S.	09-20-19	
ROAD DESCRIPTION			



UELS, LLC
Corporate Office * 85 South 200 East
Vernal, UT 84078 * (435) 789-1017



LEGEND:

 PROPOSED LOCATION



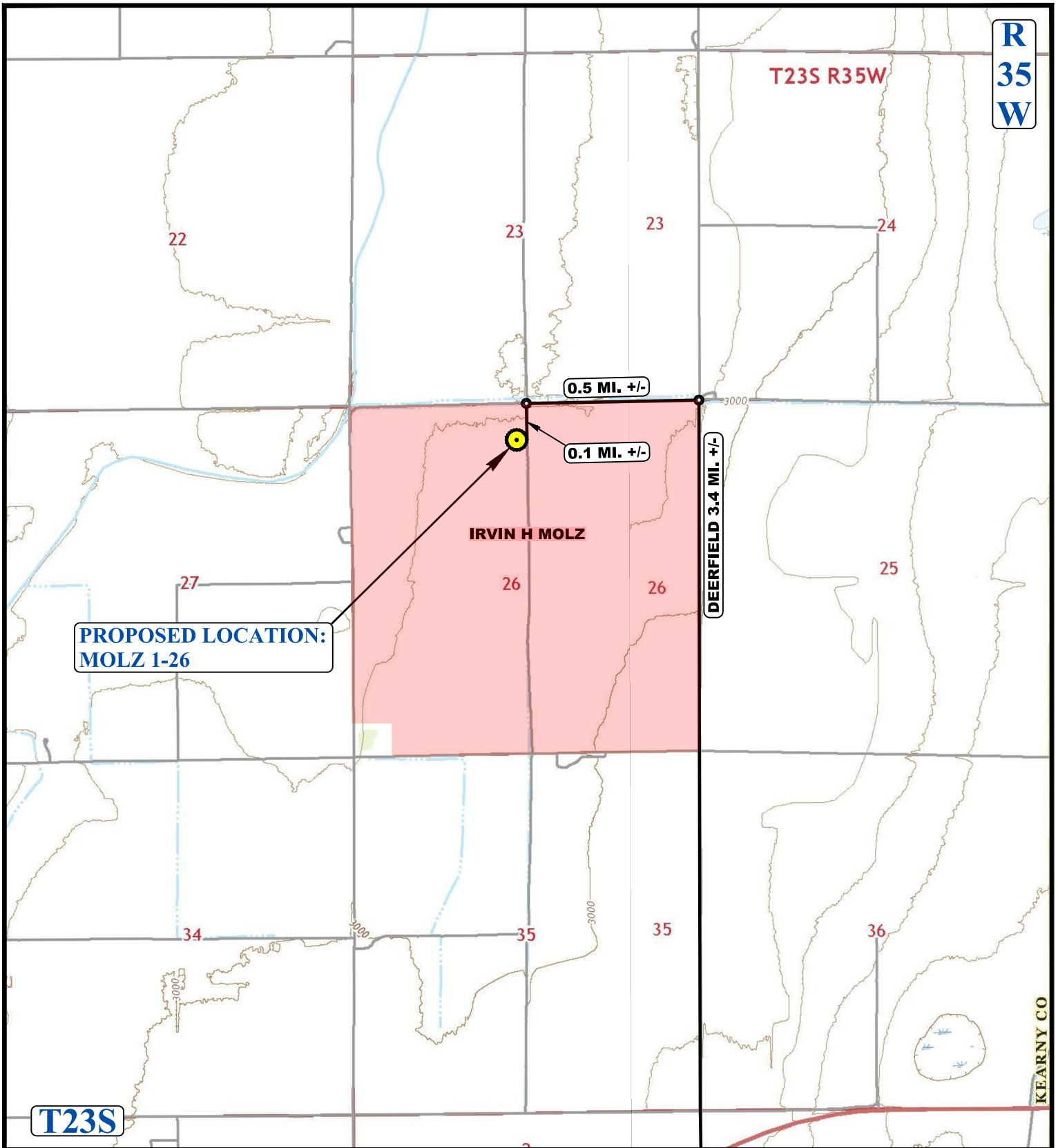
MERIT ENERGY COMPANY

MOLZ 1-26
 547' FNL 2507' FWL
 NE 1/4 NW 1/4, SECTION 26, T23S, R35W, 6th P.M.
 KEARNY COUNTY, KANSAS

SURVEYED BY	J.P.	09-19-19	SCALE
DRAWN BY	T.B.S.	09-20-19	1 : 100,000
ACCESS ROAD MAP			TOPO A



UELS, LLC
 Corporate Office * 85 South 200 East
 Vernal, UT 84078 * (435) 789-1017



NOTE: PARCEL DATA SHOWN HAS BEEN OBTAINED FROM VARIOUS SOURCES AND SHOULD BE USED FOR MAPPING, GRAPHIC AND PLANNING PURPOSES ONLY. NO WARRANTY IS MADE BY UINTAH ENGINEERING AND LAND SURVEYING (UELS) FOR ACCURACY OF THE PARCEL DATA.

LEGEND:

-  EXISTING ROAD
-  PROPOSED LOCATION



MERIT ENERGY COMPANY

MOLZ 1-26
 547' FNL 2507' FWL
 NE 1/4 NW 1/4, SECTION 26, T23S, R35W, 6th P.M.
 KEARNY COUNTY, KANSAS

SURVEYED BY	J.P.	09-19-19	SCALE
DRAWN BY	T.B.S.	09-20-19	1 : 24,000
ACCESS ROAD MAP			TOPO B



UELS, LLC
 Corporate Office * 85 South 200 East
 Vernal, UT 84078 * (435) 789-1017