



Scale 1:240 (5"=100') Imperial
Measured Depth Log

Well Name: Fritzler A Unit #1-6
 API: 15-135-26068
 Location: 50' FNL & 1700' FEL
 License Number: 9408
 Spud Date: 5/31/2019
 Surface Coordinates: Region: Ness County
Drilling Completed: 6/9/2019

Bottom Hole Coordinates:
 Ground Elevation (ft): 2384' K.B. Elevation (ft): 2392'
 Logged Interval (ft): 3600 To: TD Total Depth (ft): 4451'
 Formation: Mississippi
 Type of Drilling Fluid: Chemical Mud

Printed by MudLog from WellSight Systems 1-800-447-1534 www.WellSight.com


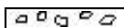




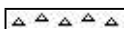


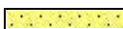

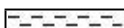


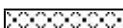



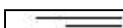
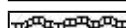


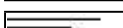
OPERATOR

Company: Trans Pacific Oil Corporation
 Address: 100 S Main St. Suite #200
 Wichita, KS. 67202

GEOLOGIST

Name: Nick Hixon
 Company: Trans Pacific Oil Corporation
 Address: 100 S Main St. Suite #200
 Wichita, KS. 67202

ROCK TYPES

 Sltstn	 Brec	 Dol	 Mrlst	 Sltst
 Grysh	 Cht	 Gyp	 Salt	 Ss
 Dolm	 Clyst	 Igne	 Shale	 Till
 Anhy	 Blksh	 Lmst	 Shcol	
 Bent	 Congl	 Meta	 Shgy	

ACCESSORIES

MINERAL

- Anhy
- Arggrn
- Arg
- Bent
- Bit
- Breclfrag
- Calc
- Carb
- Chtdk
- Chtlt
- Dol
- Feldspar
- Ferrpel
- Ferr
- Glau

- Gyp
- Hvymin
- Kaol
- Marl
- Minxl
- Nodule
- Phos
- Pyr
- Salt
- Sandy
- Silt
- Sil
- Sulphur
- Tuff

FOSSIL

- Algae
- Amph
- Belm
- Bioclst
- Brach
- Bryozoa
- Cephal
- Coral
- Crin
- Echin
- Fish
- Foram
- Fossil
- Gastro
- Oolite

- Ostra
- Pelec
- Pellet
- Pisolite
- Plant
- Strom

STRINGER

- Anhy
- Arg
- Bent
- Coal
- Dol
- Gyp
- Ls
- Mrst

- Sltstrg
- Ssstrg

TEXTURE

- Boundst
- Chalky
- Cryxln
- Earthy
- Finexln
- Grainst
- Lithogr
- Microxln
- Mudst
- Packst
- Wackest

OTHER SYMBOLS

POROSITY

- Earthy
- Fenest
- Fracture
- Inter
- Moldic
- Organic
- Pinpoint

- Vuggy

SORTING

- Well
- Moderate
- Poor

ROUNDING

- Rounded
- Subrnd
- Subang
- Angular

- Even
- Spotted
- Ques
- Dead

- Dst

EVENT

- Rft
- Sidewall

OIL SHOW

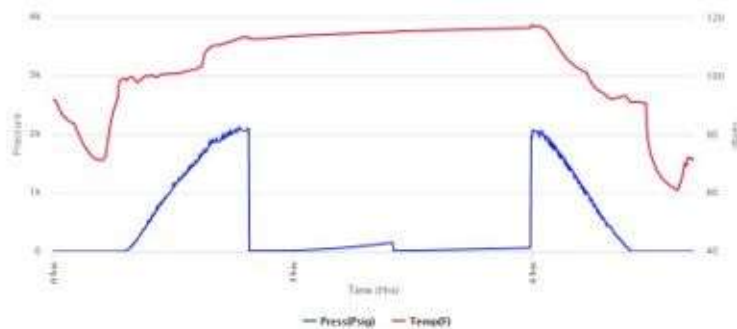
- Gas

INTERVAL

- Dst1
- Core

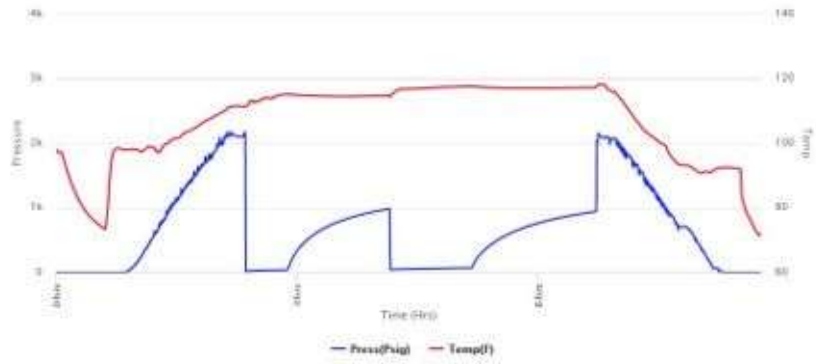
DST #1

FORT SCOTT
 4229'4300'
 30-75-10-90
 IF: SURFACE BLOW LASTING 13 MIN.
 IS: NO BLOWBACK
 FF: NO BLOW
 FS: NO BLOWBACK
 RECOVERED: 5' MUD W/ TRACE OIL
 HP: 2076-2076 PSI
 IF: 11-12 PSI
 FF: 12-13 PSI
 SIP: 151-62 PSI



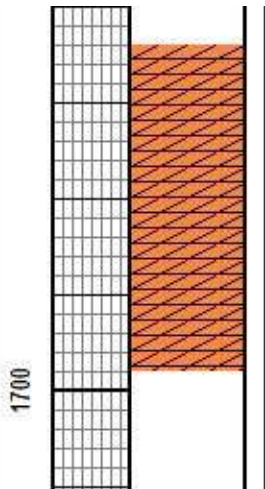
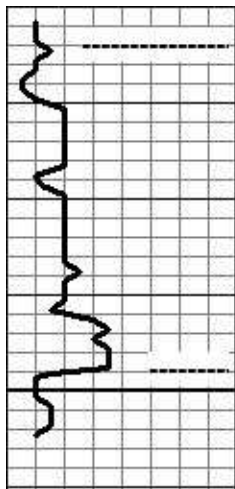
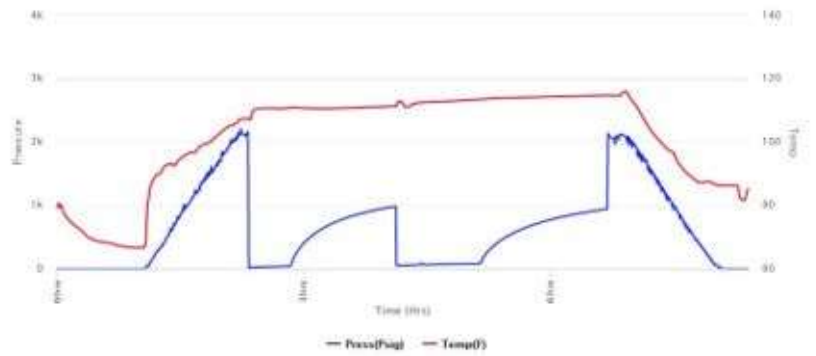
DST #2

MISSISSIPPI
 4316'-4375'
 30-75-60-90
 IF: 1/4" BLOW BUILT TO 2.5"
 IS: NO BLOWBACK
 FF: SURFACE BLOW BUILT TO 1.25"
 FS: NO BLOWBACK
 RECOVERED: 30' CO, 40' HOCM (50%O), 65'
 SLOCM (10%O)
 HP: 2109-2105 PSI
 IF: 17-39 PSI
 FF: 44-70 PSI
 SIP: 985-943 PSI



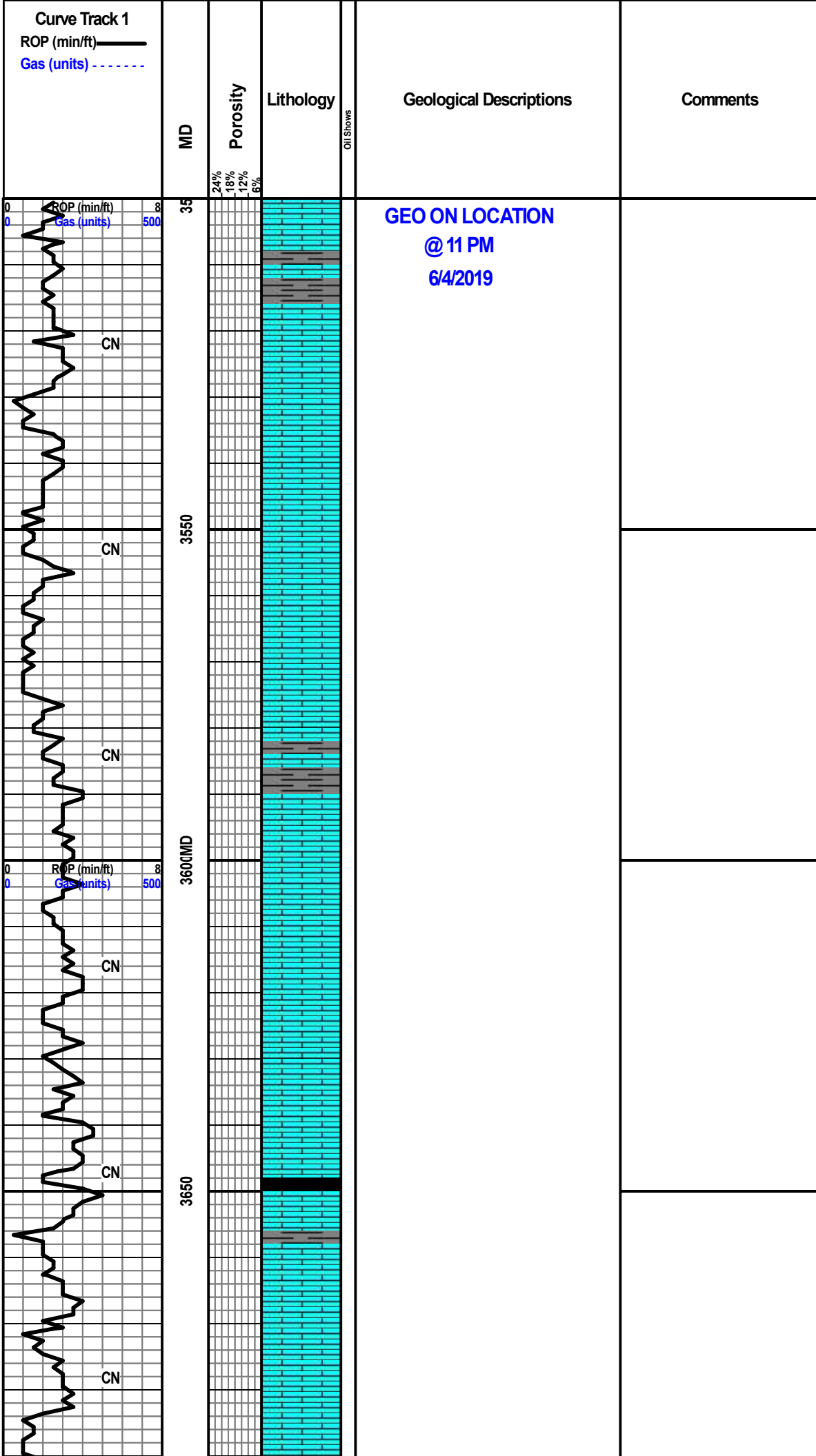
DST #3

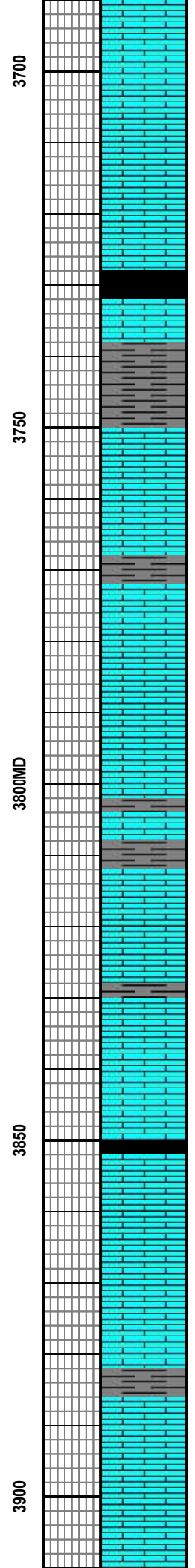
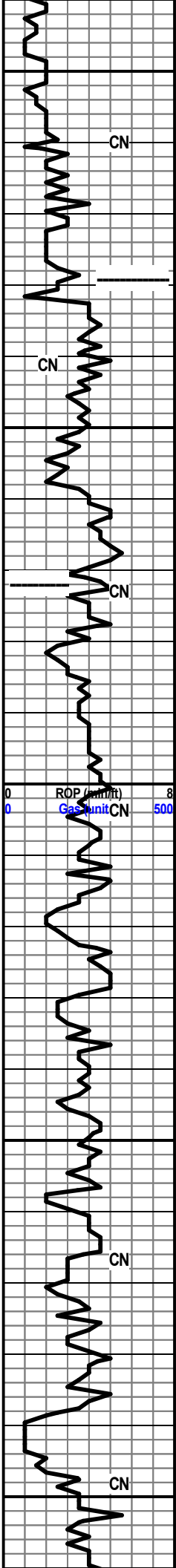
MISSISSIPPI
 4317'-4381'
 30-75-60-90
 IF: 1" BLOW BUILT TO 5"
 IS: NO BLOWBACK
 FF: SURFACE BLOW BUILT TO 3.5"
 FS: NO BLOWBACK
 RECOVERED: 10' CO, 20' HOCM (35%O), 63'
 SLOCM (12%O), 62' SLOCM (4%O)
 HP: 2137-2113 PSI
 IF: 22-43 PSI
 FF: 51-82 PSI
 SIP: 987-945 PSI



ANH. 1669' (+723')
 ELOG 1664' (+728')

BASE ANH. 1698' (+694')
 ELOG 1698' (+694')





HEEBNER 3731' (-1339')
ELOG 3729' (-1337')

LANSING 3775' (-1383')
ELOG 3772' (-1380')

LS: TAN - GRY, F XLN, DSE, POOR PPT & INT XLN POR, CHLKY - SUB CHLKY, FRESH CHRT IN PT, NS.

LS: TAN - DRK GRY, F XLN, DSE, POOR POR, NSFO.

LS: AA.

LS: TAN - GRY, F XLN, DSE, POOR PPT POR, NSFO, NO ODOR.

LS: AA.

LS: TAN - GRY, F XLN, DSE, POOR PPT POR, SUB CHLKY IN PT, NSFO.

LS: TAN - GRY, F XLN, DSE, POOR POR, NSFO.

LS: AA.

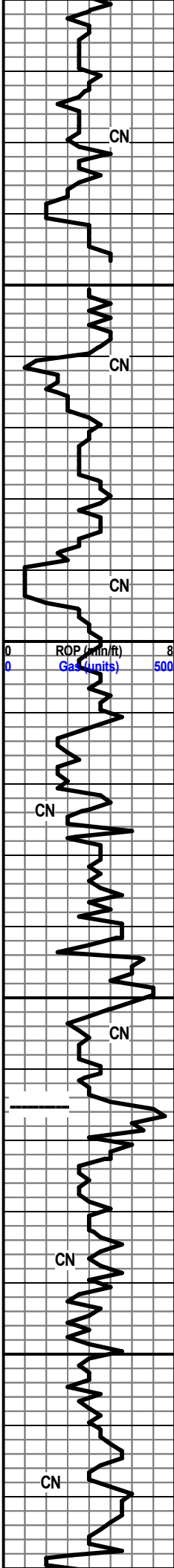
LS: TAN - GRY, F XLN, DSE, POOR PPT POR, NSFO, NO ODOR. SH: GRY.

LS: TAN - GRY, F XLN, DSE, POOR PPT POR, SUB CHLKY IN PT, NSFO, NO ODOR. SH IN PT: BLK, CARB.

LS: TAN - GRY, F XLN, DSE, POOR PPT POR, NSFO, NO ODOR. SH: GRY - DRK GRY - SME BLK.

WT: 8.9
 VIS: 47
 LCM: 1#

MUD PROP. @
 3904'
 WT: 9.2
 VIS: 54



3950

4000MD

4050

4100

LS: AA. SH: BLK, CARB.

LS: TAN - GRY, F XLN, DSE, POOR POR, NSFO. SH IN PT: GRY, SME RED PCS, SFT.

LS: AA. SH: AA.

LS: TAN - GRY, F XLN, DSE, POOR PPT POR, NSFO.

LS: OFF WHT, F XLN, DSE, POOR PPT POR, FRESH CHRT IN PT, NSFO, NO ODOR.

LS: AA.

LS: TAN - GRY, F XLN, DSE, POOR POR, NSFO, NO ODOR.

LS: AA.

LS: TAN - GRY, F XLN, DSE, NSFO.

LS: TAN - GRY, F XLN, DSE, POOR PPT POR, NSFO, NO ODOR. SH: BLK, CARB.

LS: OFF WHT, F XLN, DSE, POOR OOM POR, NSFO, NO ODOR.

LS: OFF WHT, F XLN, DSE, POOR PPT POR, NSFO. SH: GRY - BLK.

LS: AA.

LS: OFF WHT - GRY, F XLN, POOR PPT POR, NSFO, NO ODOR.

LS: AA.

BKC 4065' (-1673')
ELOG 4065' (-1673')

LS: OFF WHT - GRY, F XLN, DSE, POOR PPT POR, NSFO. SH: GRY - BLK - SMEYEL.

LS: OFF WHT - GRY, F XLN, DSE, POOR POR, NSFO. SH: GRY - BLK.

LS: AA. SH: AA.

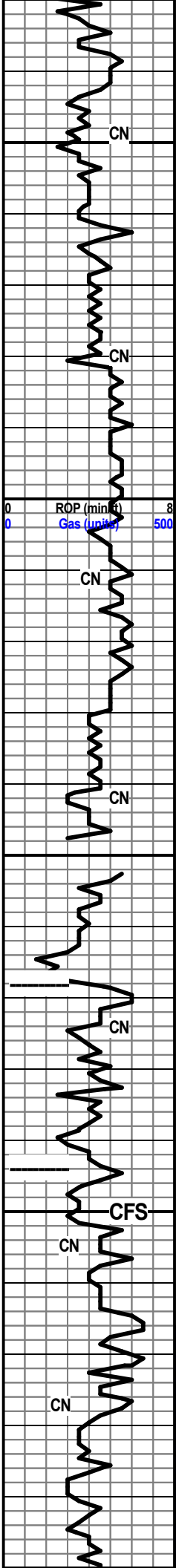
ABUNDANT SH: GRY - BLK - TEAL - SME YEL, SFT.

SH: AA. LS: TAN - CRM, F XLN, DSE, POOR PPT POR, NSFO, NO ODOR.

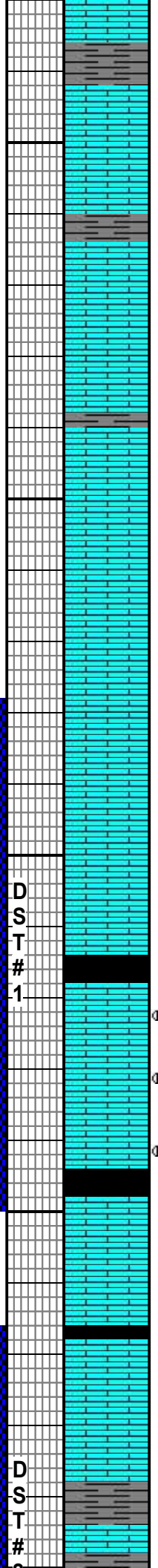
LS: AA. SH IN PT: GRY.

VIS: 51
WL: 8.0
CC: 3800
LCM: 1#

WT: 9.3+
VIS: 50
LCM: LESS THAN 1#



4150
4200MD
4250
4300
4350



LS: TAN - GRM, F XLN, DSE, POOR PPT POR, NSFO, NO ODOR.

LS: AA.

LS: TAN - GRY, F XLN, DSE, POOR PPT POR, NS. SH: GRY - BLK - SME RED.

LS: OFF WHT - GRY, F XLN, DSE, POOR PPT POR, CHLKY, NSFO. SH: GRY - BLK.

LS: AA.

LS: GRY, F XLN, DSE, CHLKY IN PT, POOR POR, NSFO.

LS: GRY, F XLN, DSE, POOR PPT POR, CHLKY IN PT, NSFO.

LS: DRK GRY, F XLN, DSE, POOR PPT POR, NSFO, NO ODOR.

LS: AA. SH: GRY - SME RED & TEAL.

LS: DRK GRY, F XLN, DSE, POOR POR, NSFO, NO ODOR.

SH: DRK GRY - BLK.

ABUNDANT SH: GRY - BLK - RED. LS IN PT. TAN, F XLN, DSE, POOR POR, NSFO.

LS: GRY, F XLN, DSE, POOR POR, NS. SH: GRY - BLK - SME RED PCS.

ABUNDANT SH: BLK, CARB.

FT SCOTT 4268' (-1876')
ELOG 4268' (-1876')

LS: TAN - GRY, F XLN, DSE, POOR INT XLN POR, FEW SMALL VUGS, BRN STN IN PT, SSFO ON BRK, FAINT ODOR.

LS: AA.
LS: TAN - GRY, F XLN, DSE, SUB CHLKY IN PT, POOR INT XLN POR, VSSFO ON BRK, V FAINT ODOR.

CHER SH 4296' (-1904')
ELOG 4294' (-1902')

SH: BLK, CARB.

LS: TAN - GRY, F XLN, DSE, CHLKY, POOR PPT POR, NSFO. SH: GRY & RED.

LS: AA. SH: AA.

LS: TAN - GRY, F XLN, DSE, NSFO. SH: GRY.

LS: GRY, F XLN, DSE, POOR POR, CHLKY IN PT, NS.

LS: GRY, F XLN, DSE, POOR POR, CHLKY IN PT NSFO NO ODOR. GUMMY YEL CLAY IN

DST #1
4229'-4300'

SEE HEADER FOR RESULTS

MUD PROP.
@4223'
WT: 9.4
VIS: 46
WL: 8.0
CC: 4000
LCM: 1#

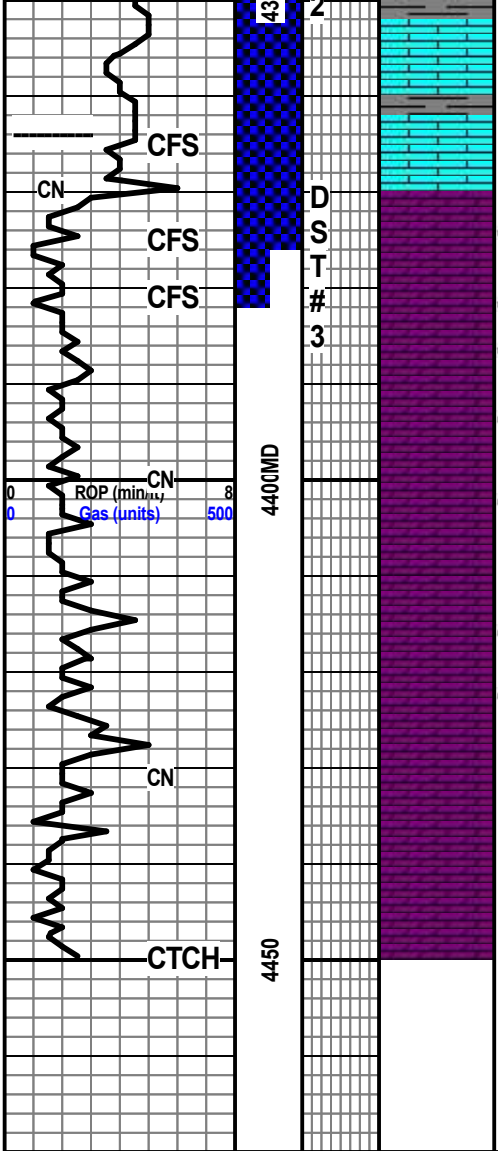
GEOLOGRAPH CLOCK
STOPPED WORKING

DST #2
4316'-4375'

SEE HEADER FOR RESULTS

MUD PROP.
@4320'
WT: 9.35
VIS: 58
WL: 8.0
CC: 4600
LCM: TRC

DST #3
4317'-4381'



PT.
MISS 4358' (-1966')
ELOG 4364' (-1972')
 LS: GRY - DRK GRY, F XLN, DSE, PR PPT
 POR, CHLKY THRUOUT. YEL & ORG SH IN
 PT. SFT.
WARSAW 4370' (-1978')
 ● DOLO: BRN, F - M XLN, SUCR, FR - GD INT
 XLN & VUGGY POR, BRN STN THRUOUT,
 FR SFO ON BRK, GD ODOR.
 ● DOLO: BRN - CRM - TAN, F - M XLN, DSE,
 SUCR IN PT, FR - GD INT XLN & VUGGY
 POR, BRN STN IN PT, FR SFO & GD ODOR.
 ● DOLO: BRN - CRM - TAN, F - M XLN, SUCR,
 FR - GD INT XLN & VUGGY POR, BRN STN,
 SSFO, FAIR ODOR.
 ● DOLO: TAN - CRM - BRN, F - M XLN, DSE, V
 CHLKY, FR INT XLN & VUGGY POR, BRN
 STN IN PT, SSFO, FAINT ODOR.
 ● DOLO: AA.
 ● DOLO: TAN - CRM, F - M XLN, DSE, PR - FR
 INT XLN POR, FEW VUGS, CHLKY, PR STN
 IN PT, VSSFO ON BRK, FAINT ODOR.
 DOLO: AA.
 DOLO: TAN - CRM, F - M XLN, CHLKY IN PT,
 PR - FR INT XLN POR, NSFO, NO ODOR.

**SEE HEADER
FOR RESULTS**

MUD PROP.
 @4381'
 WT: 9.6
 VIS: 70
 WL: 8.0
 CC: 5100
 LCM: TRC

RTD 4450' LTD 4451'